



Key to the species of Temoridae Temora occurring in the China Seas

Chang-tai Shih
National Taiwan Ocean University, ctshih@mail.ntou.edu.tw

Qing-Chao Chen
South China Sea Institute of Oceanology

Yang-Chi Lan
Fisheries Research Institute

Shih-Hui Hsiao
National Taipei University of Education

Chi-Yu Weng
Institute of Oceanography, National Taiwan University/Ocean Data Bank of the Ministry of National Science and Technology Council, Taiwan

Follow this and additional works at: <https://jmstt.ntou.edu.tw/journal>



Part of the [Fresh Water Studies Commons](#), [Marine Biology Commons](#), [Ocean Engineering Commons](#), [Oceanography Commons](#), and the [Other Oceanography and Atmospheric Sciences and Meteorology Commons](#)

Recommended Citation

Shih, Chang-tai; Chen, Qing-Chao; Lan, Yang-Chi; Hsiao, Shih-Hui; and Weng, Chi-Yu (2022) "Key to the species of Temoridae Temora occurring in the China Seas," *Journal of Marine Science and Technology*. Vol. 30: Iss. 5, Article 86.
DOI: 10.51400/2709-6998.2677
Available at: <https://jmstt.ntou.edu.tw/journal/vol30/iss5/86>

This Review-Taxonomic Index is brought to you for free and open access by Journal of Marine Science and Technology. It has been accepted for inclusion in Journal of Marine Science and Technology by an authorized editor of Journal of Marine Science and Technology.

REVIEW-TAXONOMIC INDEX

Key to the Species of Temoridae *Temora* Occurring in the China Seas

Chang-tai Shih ^{a,*}, Qing-Chao Chen ^b, Yang-Chi Lan ^c, Shih-Hui Hsiao ^d, Chi-Yu Weng ^e

^a National Taiwan Ocean University, Taiwan

^b South China Sea Institute of Oceanology, China

^c Fisheries Research Institute, Taiwan

^d National Taipei University of Education, Taiwan

^e Institute of Oceanography, National Taiwan University/Ocean Data Bank of the Ministry of National Science and Technology Council, Taiwan

Temora discaudata(3a/8a/f), *longicornis*(4a/7b/f), *stylifera*(3b/8b/f), *turbinata*(4b/6a/f)

1a	Female	2
1b	Male	5
2a/1a	Posterolateral corners of prosome sharp and pointed.....	3
2b	Posterolateral corners of prosome rounded.....	4
3a/2a	Right length of anal somite longer than left.....	<i>Temora discaudata</i>
3b	Right length of anal somite equal to left length	<i>Temora stylifera</i>
4a/2b	Urosome 4-segmented	<i>Temora longicornis</i>
4b	Urosome 5-segmented	<i>Temora turbinata</i>
5a/1b	Posterolateral corners of prosome more or less rounded.....	6
5b	Posterolateral corners of prosome more or less pointed	7
6a/5a	Left leg 5, terminal segment with 2 large spines near inner distal end and 1 fine spine on inner margin at the middle.....	<i>Temora turbinata</i>
6b	Left leg 5, terminal segment 3 small spines on inner margin, and a large distal inner spine.....	<i>Temora longicornis</i>
7a/5b	Right leg 5, terminal segment making a 180° turn at proximal quarter.....	<i>Temora discaudata</i>
7b	Right leg 5, terminal segment making a slight outward turn at proximal end	<i>Temora stylifera</i>

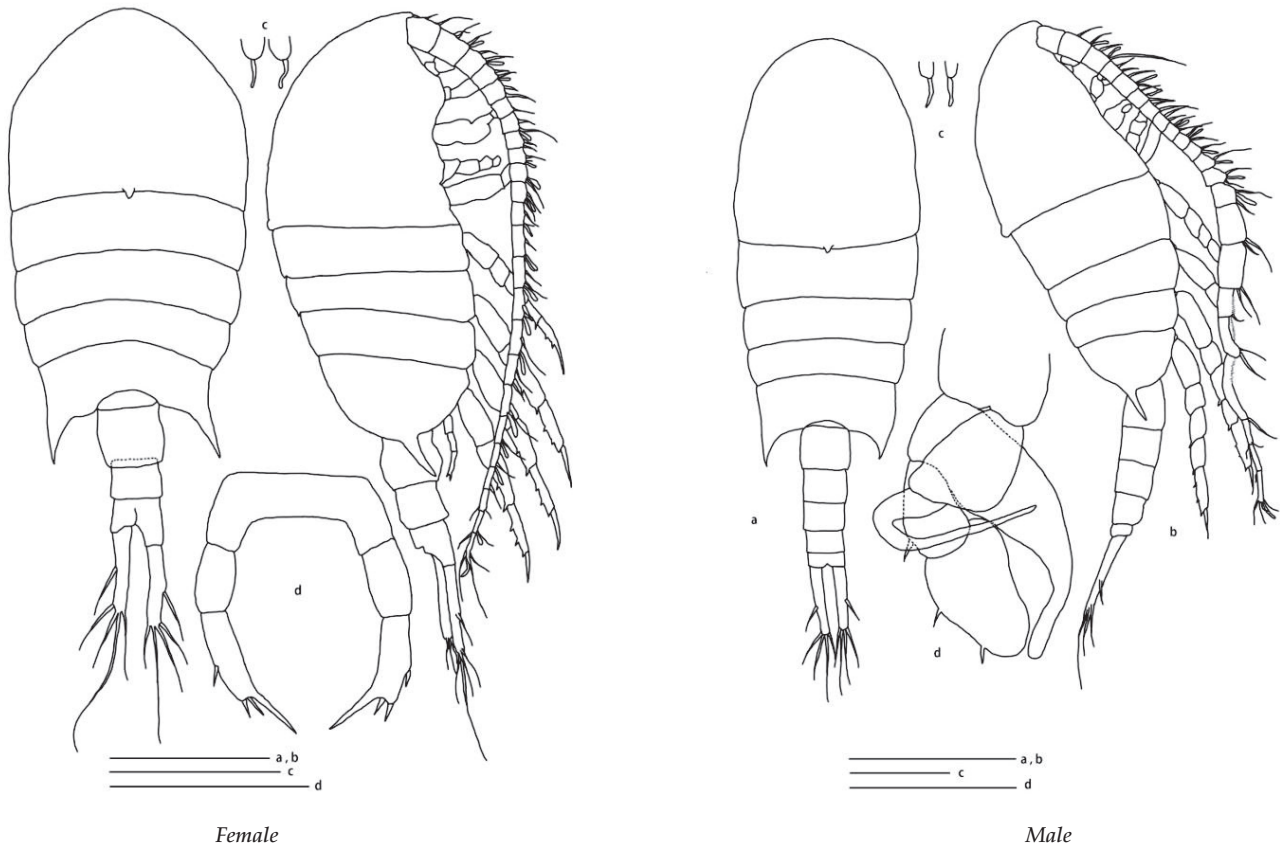
Available online 14 November 2022

* Corresponding author.

E-mail address: ctshih@mail.ntou.edu.tw (C.-t. Shih).



Temora discaudata Giesbrecht, 1889 (Size: female, 1.11–2.05 mm; male, 1.50–1.97 mm)

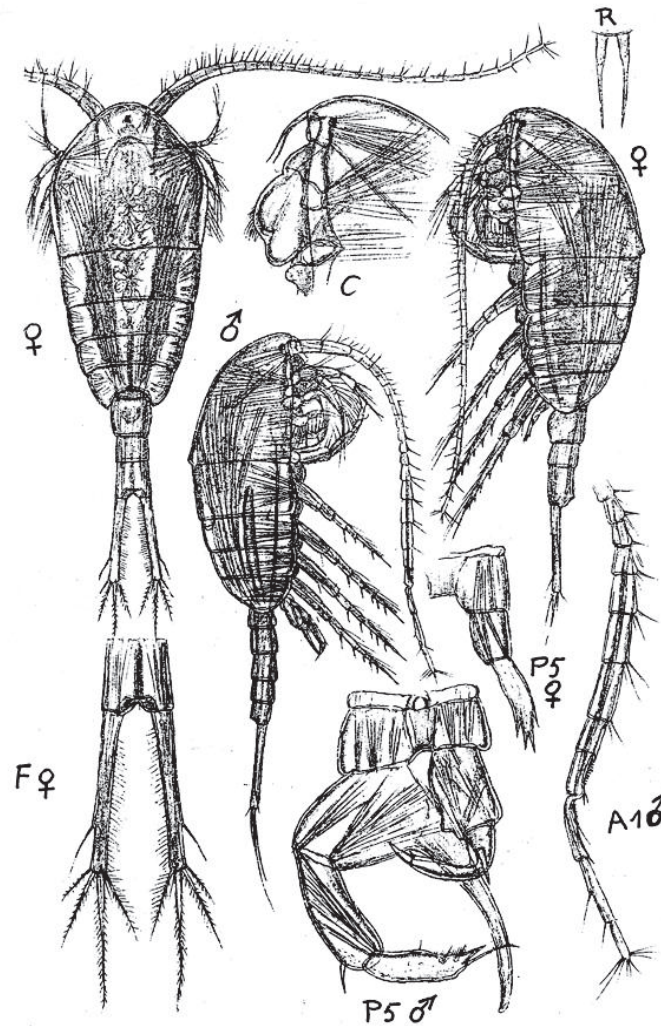


Temora discaudata Giesbrecht, 1889

Original. *Temora discaudata* Giesbrecht, 1889, Female, 1.86 mm, East China Sea (25°35'N, 121°59'E): a/b. habitus (dorsal/lateral); c. rostrum (anteroventral); d. leg 5 (posterior) Scales: a, b = 0.5 mm; c = 0.2 mm; d = 0.2 mm. Male, 1.76 mm, East China Sea (25°35'N, 121°59'E): a/b. habitus (dorsal/lateral); c. rostrum (anteroventral); d. leg 5 (posterior). Scales: a, b = 0.5 mm; c = 0.2 mm; d = 0.2 mm.

Adapted from Razouls C., de Bovée F., Kouwenberg J. and Desreumaux N., 2005–2020. Diversity and Geographic Distribution of Marine Planktonic Copepods. Sorbonne University, CNRS. Available at <http://copepodes.obs-banyuls.fr/en> [Accessed May 10 2021].

Temora longicornis (Müller, 1792) (Size: female, 0.80–1.66 mm; male, 0.82–1.65 mm)

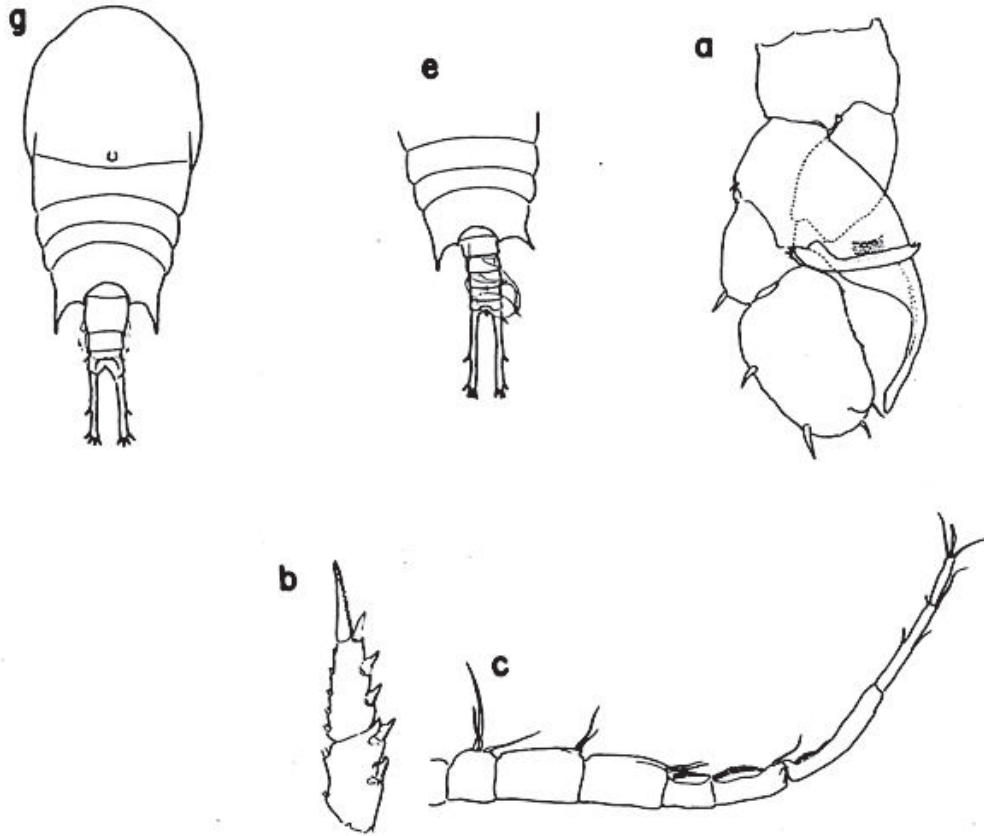


Temora longicornis (Müller, 1792)

Sars, 1903: pl. 65/66. Female & Male *Temora longicornis* (Müller, 1792), Female. habitus (dorsal/lateral); c. forehead (lateral); F. anal somite 7 caudal rami (dorsal); p5. leg 5. Male. habitus (lateral); A1. Antennule; P5. Leg 5.

Adapted from Razouls C., de Bovée F., Kouwenberg J. and Desreumaux N., 2005–2020. Diversity and Geographic Distribution of Marine Planktonic Copepods. Sorbonne University, CNRS. Available at <http://copepodes.obs-banyuls.fr/en> [Accessed May 10 2021].

Temora stylifera (Dana, 1849) (Size: female, 1.19–2.05 mm; male, 1.01–1.88 mm)

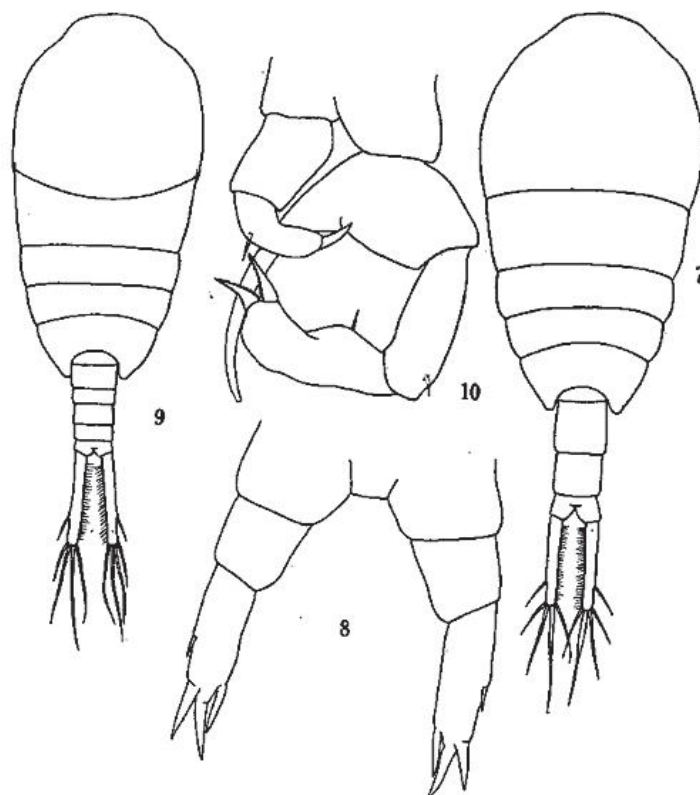


Temora stylifera (Dana, 1849)

Fleminger & Hülsemann, 1973: Fig. 6. *Temora stylifera* (Dana, 1849), Female, fig. g. habitus (dorsal). Fig. 7. Male. a. leg 5; b. Leg 2, exopod; c. distal segments of antennule. e. posterior prosome & urosome.

Razouls C., de Bovée F., Kouwenberg J. and Desreumaux N., 2005–2020. Diversity and Geographic Distribution of Marine Planktonic Copepods. Sorbonne University, CNRS. Available at <http://copepodes.obs-banyuls.fr/en> [Accessed May 10 2021].

Temora turbinata (Dana, 1849) (Size: female, 0.95–1.70 mm; male, 0.89–1.56 mm)



Temora turbinata (Dana, 1849)

Chen & Zhang, 1965: pl. 20. *Temora turbinata* (Dana, 1849), Female (from East China Sea). 7. habitus (dorsal); 8. leg 5 (posterior). Male. 9. habitus (dorsal); 10. leg 5 (anterior).

Adapted from Razouls C., de Bovée F., Kouwenberg J. and Desreumaux N., 2005–2020. Diversity and Geographic Distribution of Marine Planktonic Copepods. Sorbonne University, CNRS. Available at <http://copepodes.obs-banyuls.fr/en> [Accessed May 10 2021].