



## Key to the species of Scolecitrichidae Scolecithricella occurring in the China Seas

Chang-tai Shih  
*National Taiwan Ocean University, ctshih@mail.ntou.edu.tw*

Qing-Chao Chen  
*South China Sea Institute of Oceanology*

Yang-Chi Lan  
*Fisheries Research Institute*

Shih-Hui Hsiao  
*National Taipei University of Education*

Chi-Yu Weng  
*Institute of Oceanography, National Taiwan University/Ocean Data Bank of the Ministry of National Science and Technology Council, Taiwan*

Follow this and additional works at: <https://jmstt.ntou.edu.tw/journal>



Part of the [Fresh Water Studies Commons](#), [Marine Biology Commons](#), [Ocean Engineering Commons](#), [Oceanography Commons](#), and the [Other Oceanography and Atmospheric Sciences and Meteorology Commons](#)

### Recommended Citation

Shih, Chang-tai; Chen, Qing-Chao; Lan, Yang-Chi; Hsiao, Shih-Hui; and Weng, Chi-Yu (2022) "Key to the species of Scolecitrichidae Scolecithricella occurring in the China Seas," *Journal of Marine Science and Technology*. Vol. 30: Iss. 5, Article 78.

DOI: 10.51400/2709-6998.2669

Available at: <https://jmstt.ntou.edu.tw/journal/vol30/iss5/78>

This Review-Taxonomic Index is brought to you for free and open access by Journal of Marine Science and Technology. It has been accepted for inclusion in Journal of Marine Science and Technology by an authorized editor of Journal of Marine Science and Technology.

REVIEW-TAXONOMIC INDEX

# Key to the Species of Scolecitrichidae *Scolecithricella* Occurring in the China Seas

Chang-tai Shih <sup>a,\*</sup>, Qing-Chao Chen <sup>b</sup>, Yang-Chi Lan <sup>c</sup>, Shih-Hui Hsiao <sup>d</sup>, Chi-Yu Weng <sup>e</sup>

<sup>a</sup> National Taiwan Ocean University, Taiwan

<sup>b</sup> South China Sea Institute of Oceanology, China

<sup>c</sup> Fisheries Research Institute, Taiwan

<sup>d</sup> National Taipei University of Education, Taiwan

<sup>e</sup> Institute of Oceanography, National Taiwan University/Ocean Data Bank of the Ministry of National Science and Technology Council, Taiwan

*Scolecithricella abyssalis*(7a/14a/f), *dentata*(6b/15a/f), *globulosa*(5a/15b/f), *longifurca*(3a/12a/f), *longispinosa*(9a/f) (female only), *marginata*(6a/f) (female only), *minor*(9a/13a/f), *nicobarica*(2a/12b/f), *vittata*(8a/10a/f)

1a	Female .....	2
1b	Male .....	10
2a/1a	Leg 5 absent .....	<i>Scolecithricella nicobarica</i>
2b	Leg 5 present.....	3
3a/2b	Leg 5 2-segmented.....	<i>Scolecithricella longifurca</i>
3b	Leg 5 1-segmented.....	4
4a/3b	Leg 5 with 1 inner spine, 1 terminal spine .....	5
4b	Leg 5 with 1 inner spine, 1 terminal spine, and 1 small outer spine or outer process.....	7
5a/4a	Leg 5 arched, left and right leg 5 forming a half circle.....	<i>Scolecithricella globulosa</i>
5b	Leg 5 straight .....	6
6a/4b	Leg 5 length/width ratio nearly 3; length of leg 5/length of leg 5 inner spine less than 1.5 .....	<i>Scolecithricella marginata</i>
6b	Leg 5 length/width ratio less than 1.5; length of leg 5/length of leg 5 inner spine nearly 4.....	<i>Scolecithricella dentata</i>
7a/4b	Leg 5: a minute spine present exterior to base of terminal spine .....	<i>Scolecithricella abyssalis</i>
7b	Leg 5: no minute spine present exterior to base of terminal spine.....	8
8a/7b	Leg 5: terminal spine 2 times as long as inner spine .....	<i>Scolecithricella vittata</i>
8b	Leg 5: inner spine 3 times or more as long as terminal spine .....	9
9a/8b	Leg 5 straight, with 1 inner spine, 1 terminal spine, and 1 outer process; length of leg 5 less than 2 times width and 1.5 times as long as inner spine .....	<i>Scolecithricella minor</i>
9b/8b	Leg 5 slightly curved, with 1 inner spine, 1 terminal spine, and 1 outer spine; length of leg 5 more than 3 times width and 1.2 times as long as inner spine.....	<i>Scolecithricella longispinosa</i>
10a/1b	Right leg 5 endopod absent.....	<i>Scolecithricella vittata</i>
10b	Right leg 5 endopod present .....	11
11a/10b	Right leg 5 endopod slim, length more than 10 times width.....	12
11b	Right leg 5 endopod moderately thick, length less than 5 times width .....	13
12a/11a	Right leg 5 endopod 2-segmented. Left leg 5: basis slightly longer than coxa; endopod nearly twice as long as exopod .....	<i>Scolecithricella longifurca</i>
12b	Right leg 5 endopod 1-segmented. Left leg 5 coxa 1.2 times as long as basis, endopod rudimentary .....	<i>Scolecithricella nicobarica</i>
13a/12b	Left leg 5: exopod segment 3 longer than segment 1 and segment 2, dagger shaped, with sharp terminal; endopod nearly 1.5 times as long as exopod segment 1 .....	<i>Scolecithricella minor</i>
13b	Left leg 5: exopod segment 3 shorter than segment 1 and segment 2, not dagger shaped; endopod and exopod segment 1 subequal in length .....	14

Available online 14 November 2022

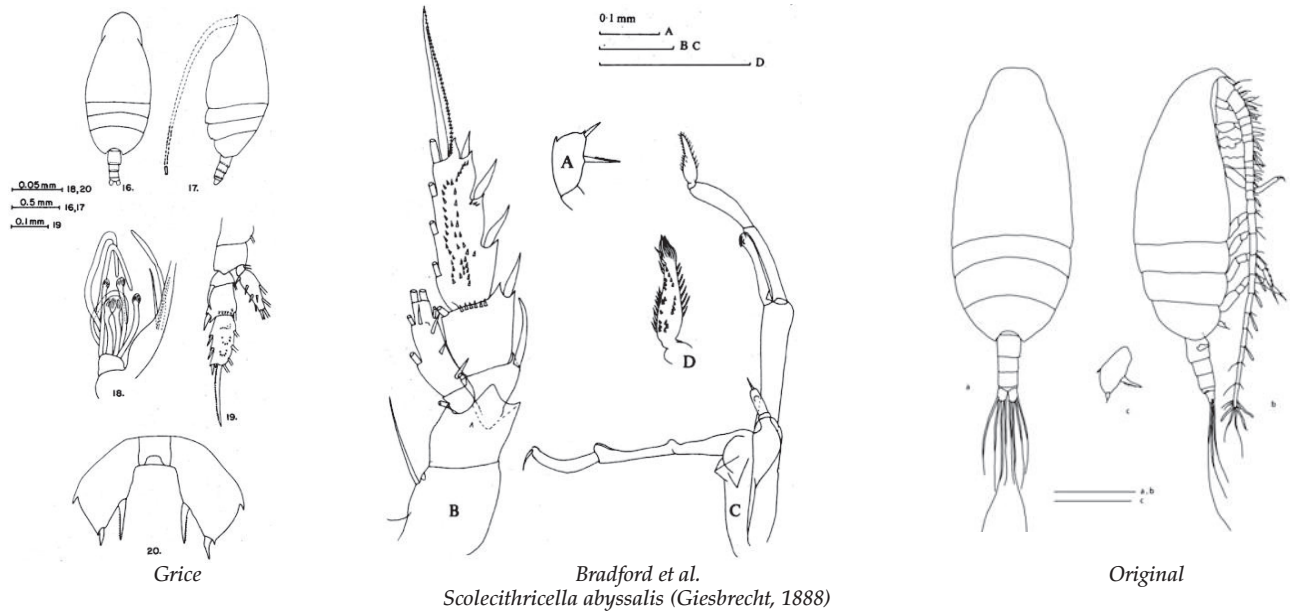
\* Corresponding author.

E-mail address: [ctshih@mail.ntou.edu.tw](mailto:ctshih@mail.ntou.edu.tw) (C.-t. Shih).



14a/13b	Right leg 5: exopod segments 1 and 2 partially fused; exopod segment 3 needle-shaped, one-quarter length of segment 2 ..... <i>Scolecithricella abyssalis</i>
14b	Right leg 5: exopod segments 1 and 2 separate; exopod segment 3 straight about three-quarter length of segment 2 ..... 15
15a/14b	Total body length 1.30–1.94 mm. Right leg 5 exopod segments 1 and 2 subequal in length..... <i>Scolecithricella dentata</i>
15b	Total body length 2.10–2.28 mm. Right leg 5 exopod segment 1 about 1.5 times as long as segment 3 ..... <i>Scolecithricella globulosa</i>

---

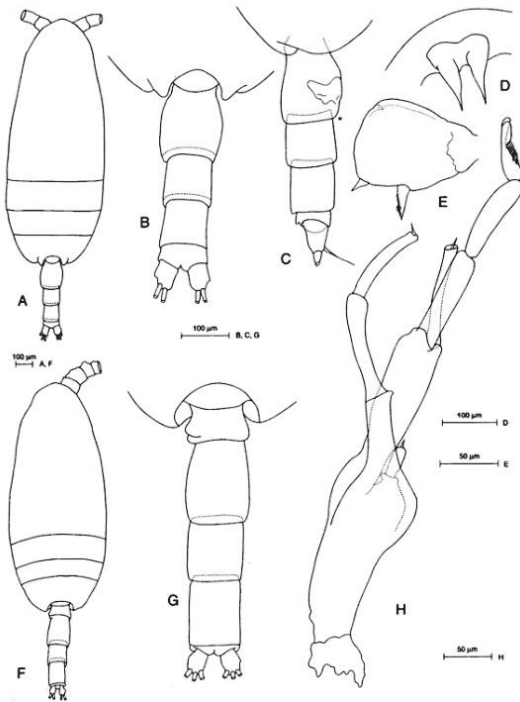
*Scolecithricella abyssalis* (Giesbrecht, 1888) (Size: female, 1.70–2.21 mm; male, 1.45–2.25 mm)

Grice, 1962: pl. 16. *Scolecithricella abyssalis* (Giesbrecht, 1888), Female. 16/17. habitus (dorsal/lateral); 18. maxilla, terminal part; 19. leg 2; 20. leg 5.

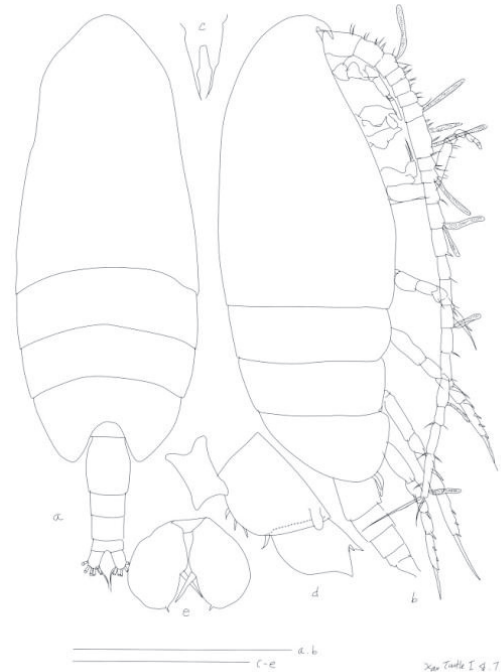
Bradford et al., 1983: fig. 62. *Scolecithricella abyssalis* (Giesbrecht, 1888), Female. A. leg 5. Male. B. leg 2; C. leg 5 (posterior); D. left leg 5 terminal part.

Adapted from Razouls C., de Bovée F., Kouwenberg J. and Desreumaux N., 2005–2020. Diversity and Geographic Distribution of Marine Planktonic Copepods. Sorbonne University, CNRS. Available at <http://copepodes.obs-banyuls.fr/en> [Accessed October 13 2020].

Original. *Scolecithricella abyssalis* (Giesbrecht, 1888), Female, 2.04 mm, South China Sea (6°46'N, 112°43'E): a/b. habitus (dorsal/lateral); c. right leg 5 (posterior). Scales: a, b = 0.5 mm; c = 0.2 mm.

*Scolecithricella dentata* (Giesbrecht, 1892) (Size: female, 1.21–2.07 mm; male, 1.30–1.94 mm)

Mazzocchi et al.

*Scolecithricella dentata* (Giesbrecht, 1892)

Original

Mazzocchi et al., 1995: fig. 3.36. *Scolecithricella dentata* (Giesbrecht, 1892), Female. A. habitus (dorsal); B/C. urosome (dorsal/lateral); D. rostrum; E. leg 5, Male. F. habitus (dorsal); G. urosome (dorsal); H. leg 5 (anterior).

Adapted from Razouls C., de Bovée F., Kouwenberg J. and Desreumaux N., 2005–2020. Diversity and Geographic Distribution of Marine Planktonic Copepods. Sorbonne University, CNRS. Available at <http://copepodes.obs-banyuls.fr/en> [Accessed May 13 2021].

Original. *Scolecithricella dentata* (Giesbrecht, 1892), Female, 1.25 mm, East of Taiwan (Turtle Island, 24°52'N, 122°27'E): a/b. habitus (dorsal/lateral); c. rostrum (frontal); d. coxa and basis of left leg 4 (anterior); e. leg 5 (posterior). Scales: a, b = 0.5 mm; c-e = 0.2 mm.

*Scolecithricella globulosa* Brodsky, 1950 (Size: female, 1.65–2.16 mm; male, 2.10–2.28 mm)



Fig. 8

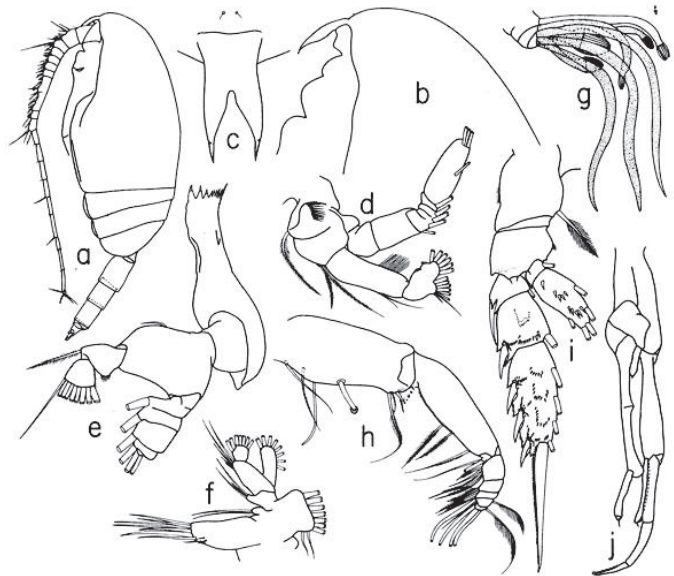


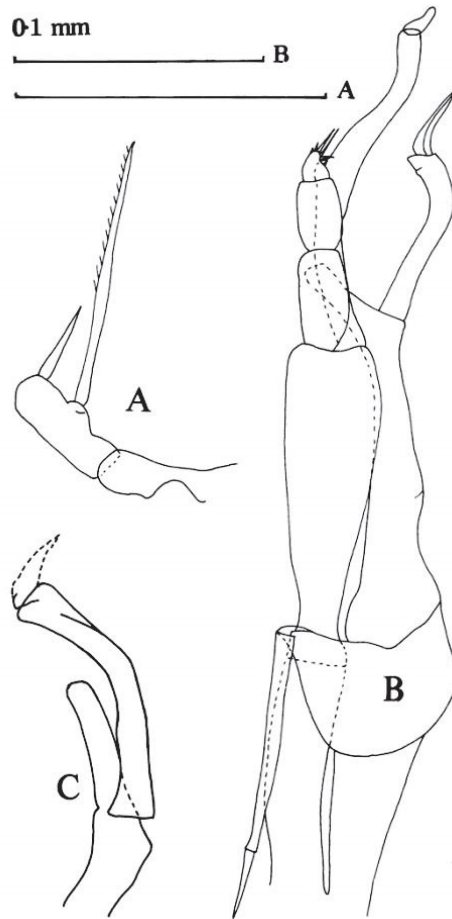
Fig. 9

*Scolecithricella globulosa* Brodsky, 1950

Park, 1980: fig. 8. *Scolecithricella globulosa* Brodsky, 1950, Female. a. habitus (lateral); b. forehead (Lateral); c. pediger 5 and urosome (lateral); d. genital double-somite; e. rostrum (anterior); f. antenna; g. mandible; h. maxillule; i. maxilla, distal part; j. maxilliped; k. leg 1 (posterior); l-o, legs 2–5 (posterior). Fig. 9. Male. a. habitus (lateral); b. forehead (lateral); c. rostrum (anterior); d. antenna; e. mandible; f. maxillule; g. maxilla, distal part; h. maxilliped; i. leg 2 (posterior); j. leg 5 (anterior)

Adapted from Razouls C., de Bovée F., Kouwenberg J. and Desreumaux N., 2005–2020. Diversity and Geographic Distribution of Marine Planktonic Copepods. Sorbonne University, CNRS. Available at <http://copepodes.obs-banyuls.fr/en> [Accessed May 13 2021].

*Scolecithricella longifurca* (Giesbrecht, 1888) (Size: female, 1.25–2.00 mm; male, 1.20–1.53 mm)

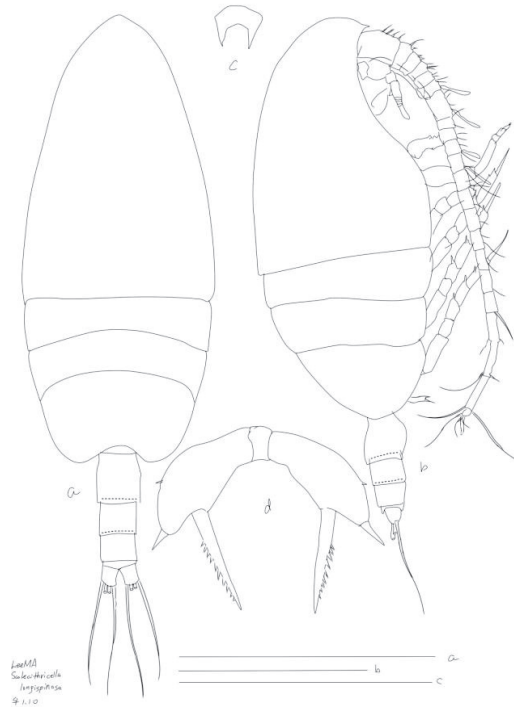


*Scolecithricella longifurca* (Giesbrecht, 1888)

Bradford et al., 1983: fig. 58. *Scolecithricella longifurca* (Giesbrecht, 1888), Female. A. leg 5. Male. B. leg 5 (anterior); C. right leg 5, exopod segments 1 and 2.

Adapted from Razouls C., de Bovée F., Kouwenberg J. and Desreumaux N., 2005–2020. Diversity and Geographic Distribution of Marine Planktonic Copepods. Sorbonne University, CNRS. Available at <http://copepodes.obs-banyuls.fr/en> [Accessed May 13 2021].

*Scolecithricella longispinosa* Chen & Zhang, 1965 (Size: female, 1.02–1.20 mm; male, 0.86–1.20 mm)

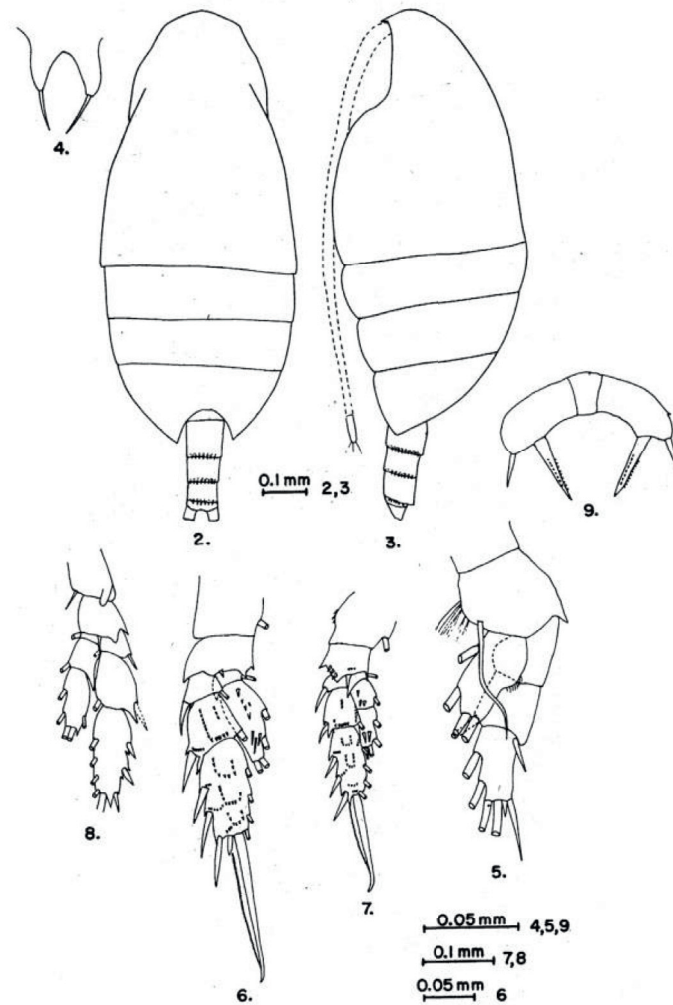


*Scolecithricella longispinosa* Chen & Zhang, 1965

Original. *Scolecithricella longispinosa* Chen & Zhang, 1965. female, 1.10 mm, East of Taiwan. a/b. habitus (dorsal/lateral; c. rostrum (ventral); d. leg 5 (posterior). Scales: a, b = 0.5 mm; c = 0.1 mm; d = 0.1 mm.



*Scolecithricella marginata* (Giesbrecht, 1888) (Size: female, 1.00–1.05 mm; male, unknown)

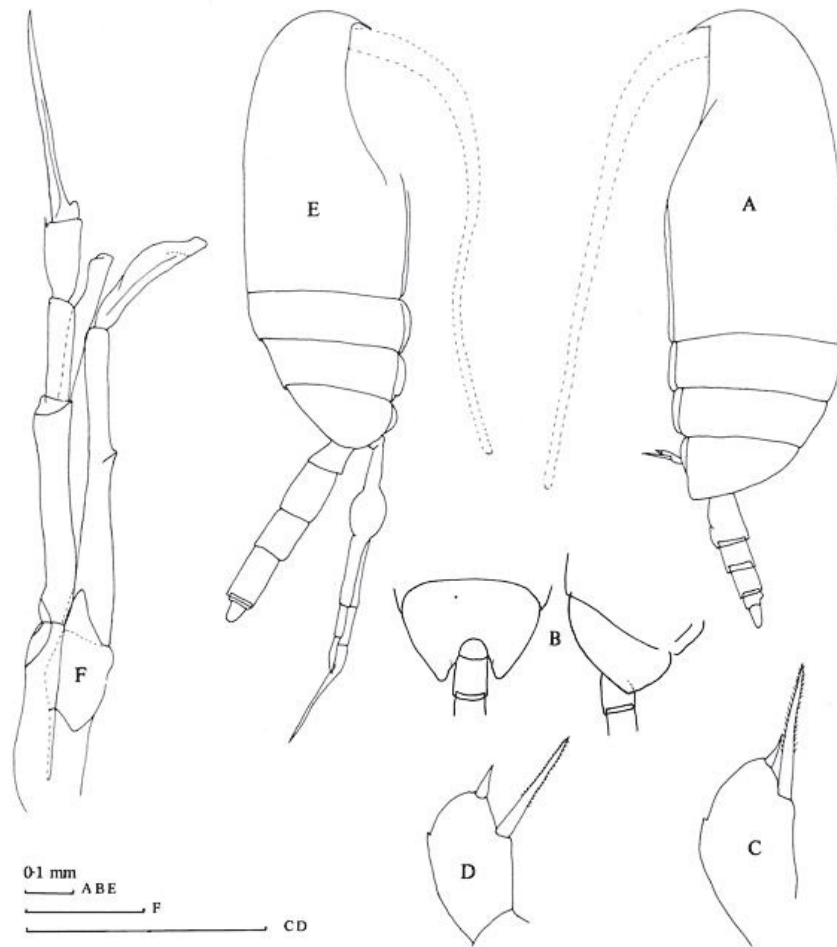


*Scolecithricella marginata* (Giesbrecht, 1888)

Grice, 1962: pl. 18. *Scolecithricella marginata* (Giesbrecht, 1888), Female. 2/3. habitus (dorsal/lateral); 4. rostrum; 5–9. legs 1–5.

Adapted from Razouls C., de Bovée F., Kouwenberg J. and Desreumaux N., 2005–2020. Diversity and Geographic Distribution of Marine Planktonic Copepods. Sorbonne University, CNRS. Available at <http://copepodes.obs-banyuls.fr/en> [Accessed May 13 2021]

*Scolecithricella minor* (Brady, 1883) (Size: female, 1.08–1.70 mm; male, 1.20–1.46 mm)

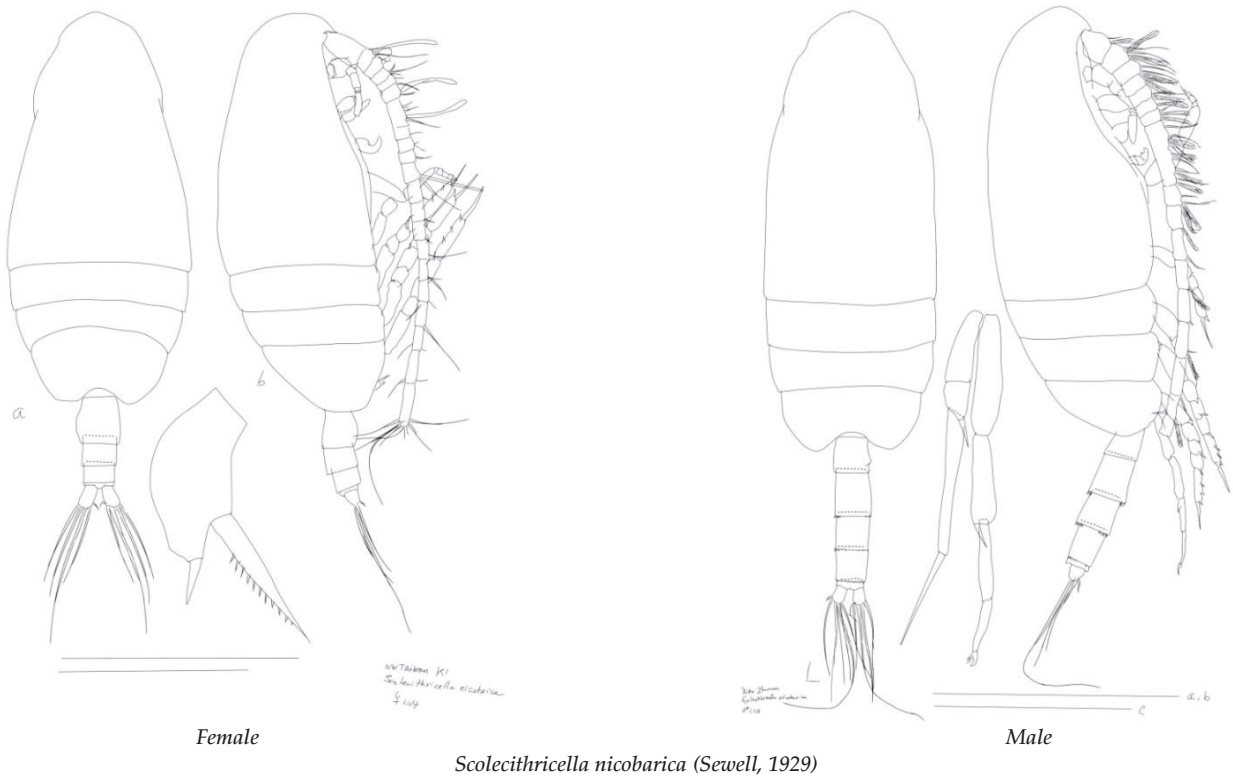


*Scolecithricella minor* (Brady, 1883)

Bradford et al., 1983: fig. 65. *Scolecithricella minor* (Brady, 1883), Female, A, habitus (lateral); B, posterior prosome (dorsal and lateral); C, leg 5; D, leg 5 (other specimen). Male. E, habitus (lateral); F, leg 5 (posterior).

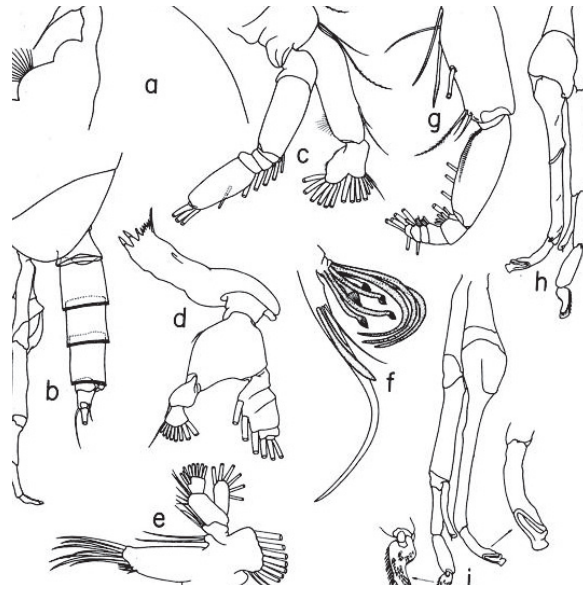
Adapted from Razouls C., de Bovée F., Kouwenberg J. and Desreumaux N., 2005–2020. Diversity and Geographic Distribution of Marine Planktonic Copepods. Sorbonne University, CNRS. Available at <http://copepodes.obs-banyuls.fr/en> [Accessed May 13 2021].

*Scolecithricella nicobarica* (Sewell, 1929) (Size: female, 1.08–1.50 mm; male, 1.04–1.50 mm)



**Original.** *Scolecithricella nicobarica* (Sewell, 1929), **Female**, 1.08 mm, Taiwan Strait. a/b. habitus (dorsal/lateral); c. left leg 5 (posterior). Scales: a, b = 0.5 mm; c = 0.05 mm. **Male**, 1.20 mm, Taiwan Strait (24°47'N, 120°53'E): a/b. habitus (dorsal/lateral); c. leg 5 (anterior). Scales: a, b = 0.5 mm; c = 0.2 mm.

*Scolecithricella vittata* (Giesbrecht, 1892) (Size: female, 1.48–2.00 mm; male, 1.60–2.00 mm)



Park 1980



Original

*Scolecithricella vittata* (Giesbrecht, 1892)

Park 1980: fig. 6. *Scolecithricella vittata* (Giesbrecht, 1892), Male. a. forehead (lateral); b. pediger 5 and urosome (lateral); c. antenna; d. mandible; e. maxillule; f. maxilla, distal segments; g. maxilliped; h/i. leg 5 (anterior/posterior).

Adapted from Razouls C., de Bovée F., Kouwenberg J. and Desreumaux N., 2005–2020. Diversity and Geographic Distribution of Marine Planktonic Copepods. Sorbonne University, CNRS. Available at <http://copepodes.obs-banyuls.fr/en> [Accessed May 14 2021]

Original. *Scolecithricella vittata* (Giesbrecht, 1892), Female, 1.52 mm, East of Taiwan (Turtle Isla). a/b. habitus (dorsal/lateral); c. rostrum; d. leg 5.