



Key to the species of Scolecitrichidae Scaphocalanus occurring in the China Seas

Chang-tai Shih
National Taiwan Ocean University, ctshih@mail.ntou.edu.tw

Qing-Chao Chen
South China Sea Institute of Oceanology

Yang-Chi Lan
Fisheries Research Institute

Shih-Hui Hsiao
National Taipei University of Education

Chi-Yu Weng
Institute of Oceanography, National Taiwan University/Ocean Data Bank of the Ministry of National Science and Technology Council, Taiwan

Follow this and additional works at: <https://jmstt.ntou.edu.tw/journal>



Part of the [Fresh Water Studies Commons](#), [Marine Biology Commons](#), [Ocean Engineering Commons](#), [Oceanography Commons](#), and the [Other Oceanography and Atmospheric Sciences and Meteorology Commons](#)

Recommended Citation

Shih, Chang-tai; Chen, Qing-Chao; Lan, Yang-Chi; Hsiao, Shih-Hui; and Weng, Chi-Yu (2022) "Key to the species of Scolecitrichidae Scaphocalanus occurring in the China Seas," *Journal of Marine Science and Technology*. Vol. 30: Iss. 5, Article 77.

DOI: 10.51400/2709-6998.2668

Available at: <https://jmstt.ntou.edu.tw/journal/vol30/iss5/77>

This Review-Taxonomic Index is brought to you for free and open access by Journal of Marine Science and Technology. It has been accepted for inclusion in Journal of Marine Science and Technology by an authorized editor of Journal of Marine Science and Technology.

REVIEW-TAXONOMIC INDEX

Key to the Species of Scolecitrichidae *Scaphocalanus* Occurring in the China Seas

Chang-tai Shih ^{a,*}, Qing-Chao Chen ^b, Yang-Chi Lan ^c, Shih-Hui Hsiao ^d, Chi-Yu Weng ^e

^a National Taiwan Ocean University, Taiwan

^b South China Sea Institute of Oceanology, China

^c Fisheries Research Institute, Taiwan

^d National Taipei University of Education, Taiwan

^e Institute of Oceanography, National Taiwan University/Ocean Data Bank of the Ministry of National Science and Technology Council, Taiwan

Scaphocalanus affinis(3b/10a/f), *brevicornis*(4a/9a/f), *echinatus*(5a/11a/f), *magnus*(5a/7a/f), *major*(6b/11b/f), *medius*(6a/8a/f)

1a	Female	2
1b	Male	7
2a/1a	Front of cephalosome with a median crest	3
2b	Front of cephalosome without crest	4
3a/2a	Leg 5 with 2 segments	<i>Scaphocalanus magnus</i>
3b	Leg 5 with 3 segments	<i>Scaphocalanus affinis</i>
4a/2b	Leg 5 with 4 spines	<i>Scaphocalanus brevicornis</i>
4b	Leg 5 with 3 or 2 spines	5
5a/4b	Leg 5 segment 2 with 1 inner spine, 1 terminal spine, outer margin sometimes with a minute spiny process	<i>Scaphocalanus echinatus</i>
5b	Leg 5 segment 2 with 1 inner spine, 1 outer spine, and 1 terminal spine	6
6a/5b	Leg 5 segment 2 with 1 inner spine and 2 terminal spines	<i>Scaphocalanus medius</i>
6b	Leg 5 segment 2 with 1 inner spine, 1 outer spine, and 1 terminal spine	<i>Scaphocalanus major</i>
7a/1b	Right leg 5: endopod 1-segmented	<i>Scaphocalanus magnus</i>
7b	Right leg 5: endopod 2-segmented	8
8a/7b	Left leg 5: exopod 2-segmented	<i>Scaphocalanus medius</i>
8b	Left leg 5: exopod 3-segmented	9
9a/8b	Left Leg 5 endopod more than 1.5 times exopod in length	<i>Scaphocalanus brevicornis</i>
9b	Left Leg 5 endopod less than 1.3 times exopod in length	10
10a/9b	Urosome less than 2.5 times urosomite 2 in length. Right leg 5 exopod segment 1 more than 4 times segment 3 in length	<i>Scaphocalanus affinis</i>
10b	Urosome more than 2.5 times urosomite 2 in length. Right leg 5 exopod segment 1 less than 3.5 times segment 3 in length	11
11a/10b	Left leg 5 exopod: length ratio of segment 1/segment 3 > 4	<i>Scaphocalanus echinatus</i>
11b	Left leg 5 exopod: length ratio of segment 1/segment 2 < 3	<i>Scaphocalanus major</i>

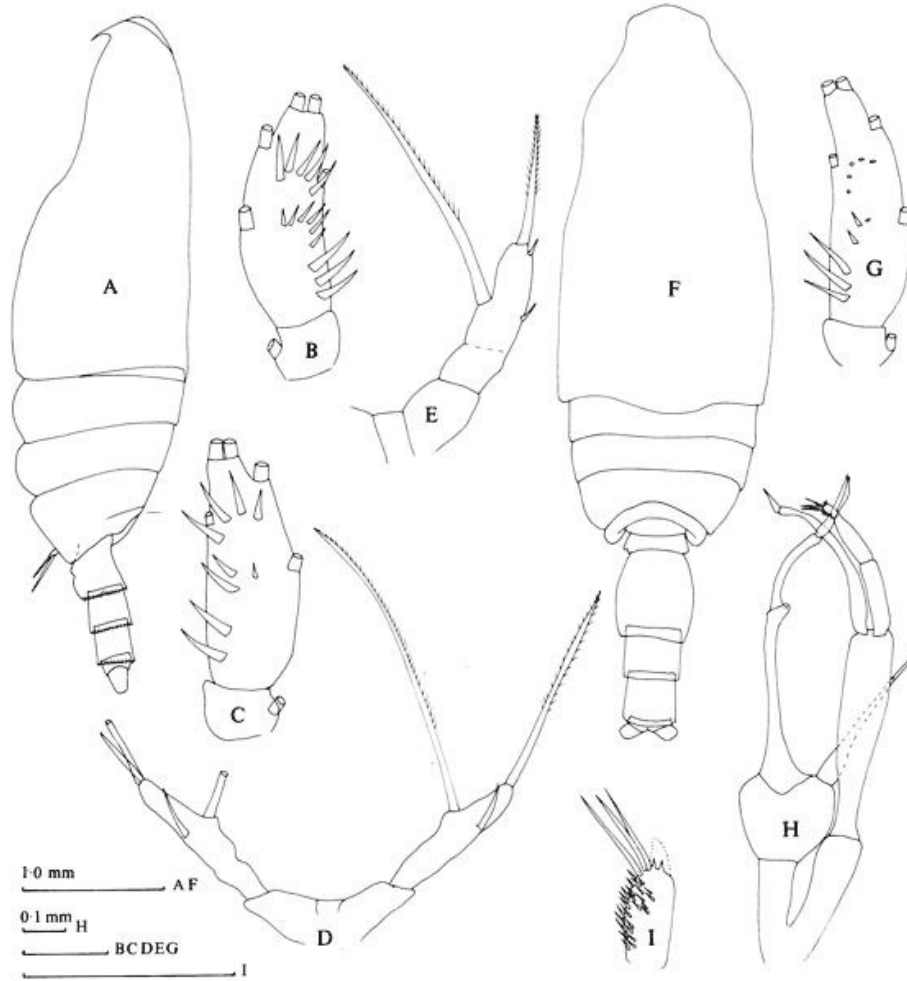
Available online 14 November 2022

* Corresponding author.

E-mail address: ctshih@mail.ntou.edu.tw (C.-t. Shih).



Scaphocalanus affinis (G.O. Sars, 1905) (Size: female, 3.60–5.40 mm; 2.80–5.00 mm)

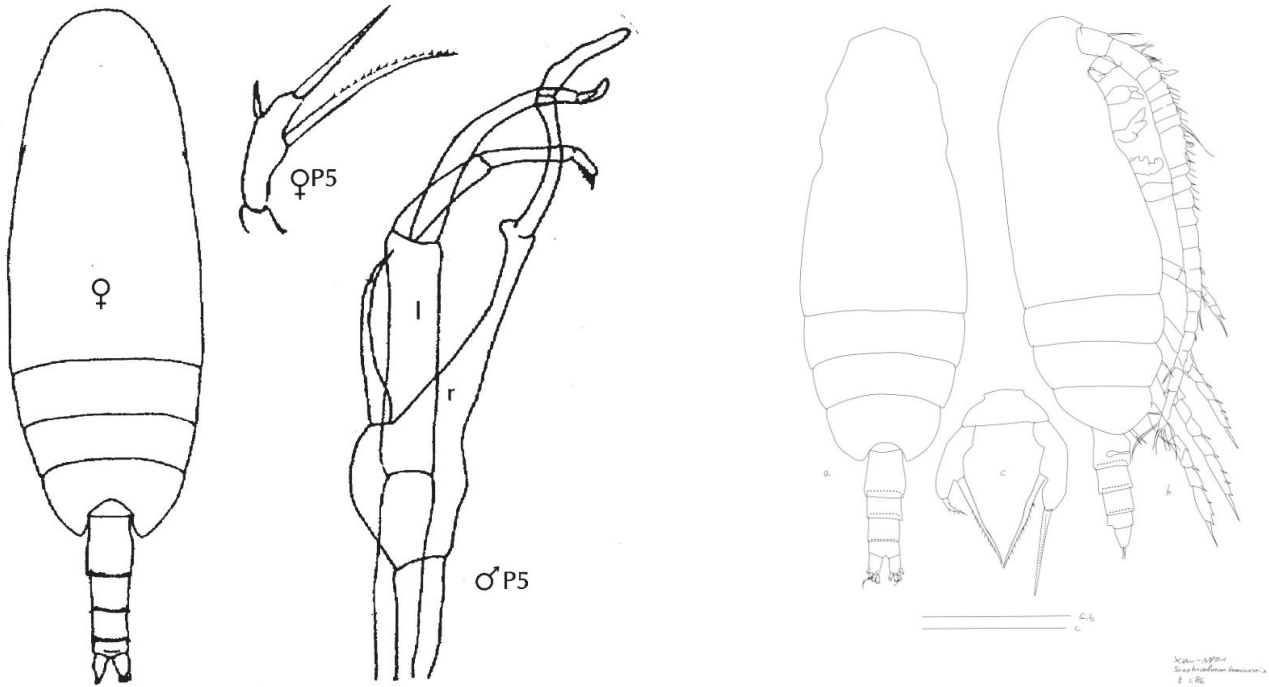


Scaphocalanus affinis (G.O. Sars, 1905)

Bradford et al., 1983, Fig. 54. *Scaphocalanus affinis* (G.O. Sars, 1905), Female, A. habitus (Latera); B. leg 2 endopod; C. leg 2 endopod (other specimen); D. leg 5. E. leg 5 (another specimen). Male. F. habitus (dorsal); G. leg2 endopod; H. leg 5 (posterior); I. left leg 5, terminal part of left exopod.

Adapted from Razouls C., de Bovée F., Kouwenberg J. and Desreumaux N., 2005–2020. Diversity and Geographic Distribution of Marine Planktonic Copepods. Sorbonne University, CNRS. Available at <http://copepodes.obs-banyuls.fr/en> [Accessed April 09 2021].

Scaphocalanus brevicornis (G.O. Sars, 1905) (Size: female, 1.90–2.66 mm; 1.90–3.40 mm)



Bradford-Grieve et al., 1999

Scaphocalanus brevicornis (G.O. Sars, 1905)

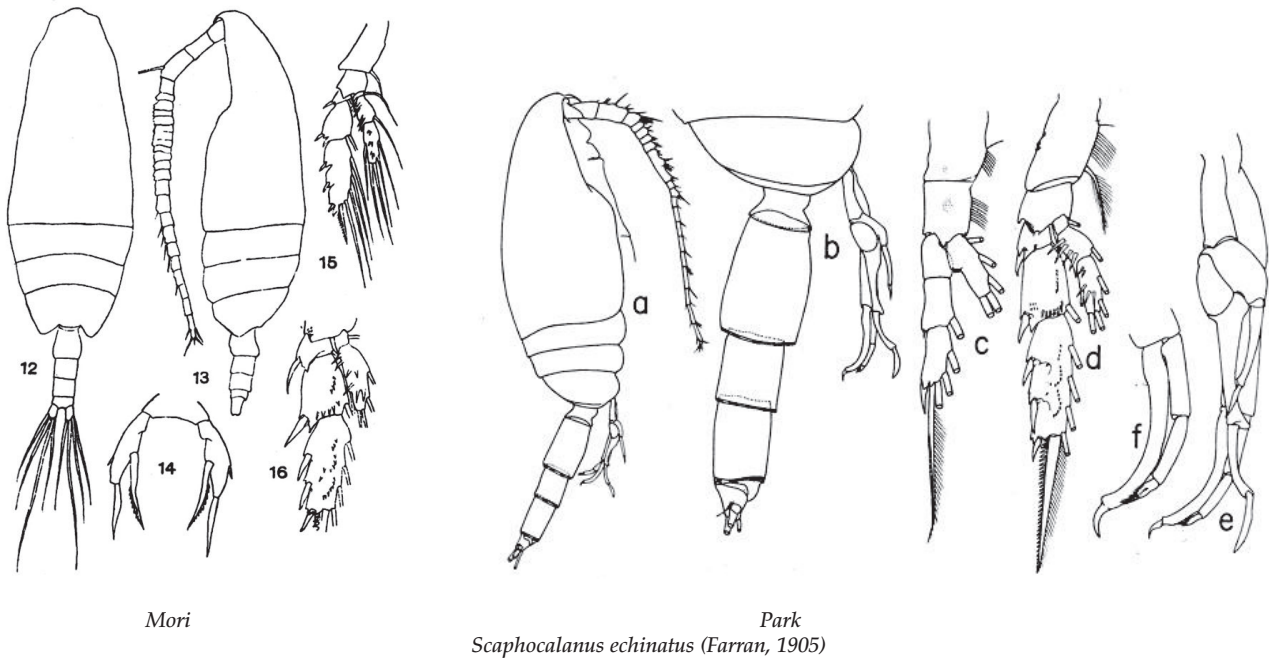
Original

Bradford-Grieve et al., 1999: fig. 7. *Scaphocalanus brevicornis* (G.O. Sars, 1905), Female. habitus (dorsal); leg 5. Male. leg 5 (anterior)

Adapted from Razouls C., de Bovée F., Kouwenberg J. and Desreumaux N., 2005–2020. Diversity and Geographic Distribution of Marine Planktonic Copepods. Sorbonne University, CNRS. Available at <http://copepodes.obs-banyuls.fr/en> [Accessed April 09 2021].

Original. *Scaphocalanus brevicornis* (G.O. Sars, 1905), Female, 1.86 mm, east of Taiwan. A. habitus (dorsal/lateral); c. leg 5.

Scaphocalanus echinatus (Farran, 1905) (Size: female, 1.60–2.56 mm; 1.26–2.36 mm)

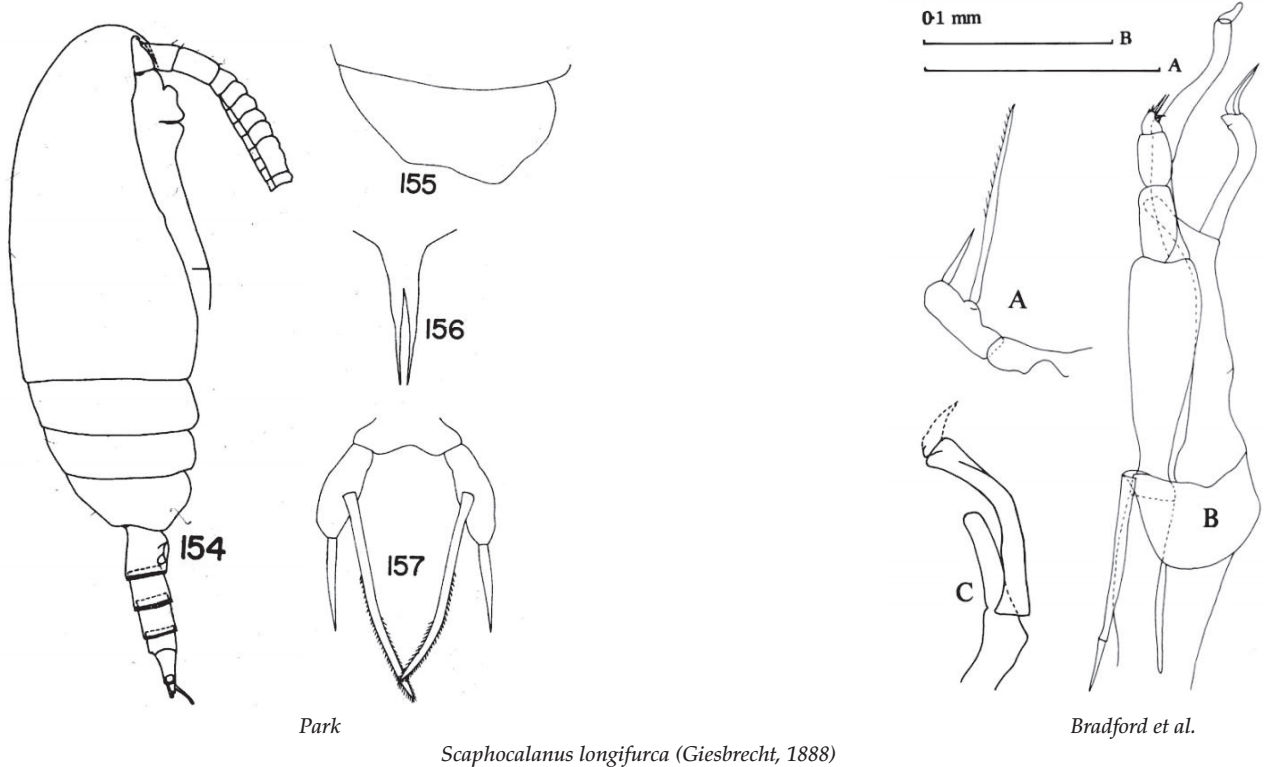


Mori, 1937: pl. 24. *Scaphocalanus echinatus* (Farran, 1905), Female. 12/13. habitus (dorsal/lateral); 14. leg 5; 15. leg 4; 16. leg 2.

Park, 1982: fig. 16. *Scaphocalanus echinatus* (Farran, 1905), Male. a. habitus (lateral); b. pediger 5 & urosome (lateral); c. leg 1 (anterior); d. leg 3 (posterior); e. leg 5 (viewed from right side); f. left leg 5 distal part (posterior).

Adapted from Razouls C., de Bovée F., Kouwenberg J. and Desreumaux N., 2005–2020. Diversity and Geographic Distribution of Marine Planktonic Copepods. Sorbonne University, CNRS. Available at <http://copepodes.obs-banyuls.fr/en> [Accessed April 13 2021].

Scaphocalanus longifurca (Giesbrecht, 1888) (Size: female, 1.25–2.00 mm; 1.20–1.53 mm)

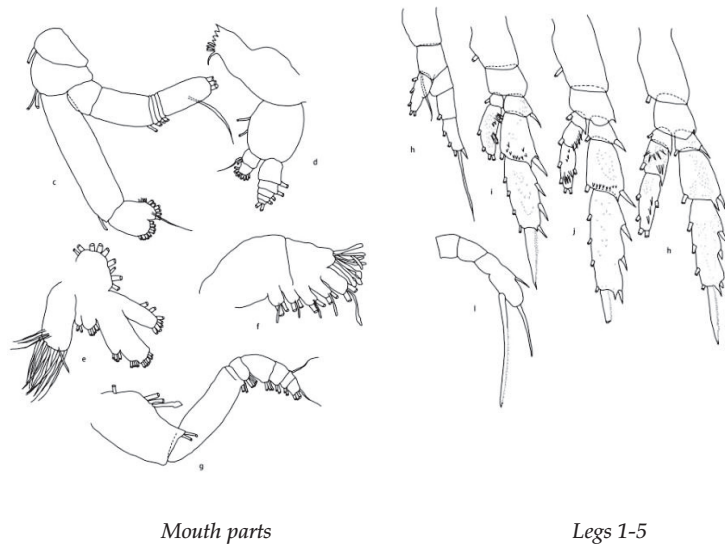
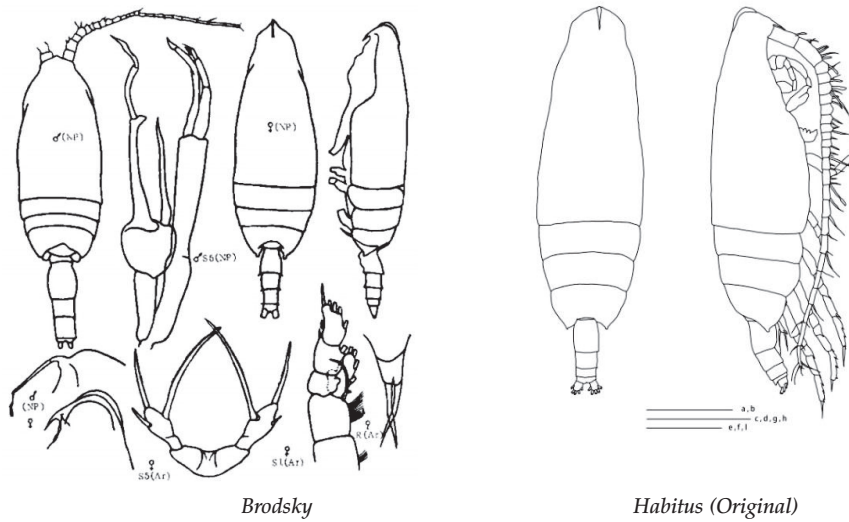


Park, 1970: figs. 154–157. *Scaphocalanus longifurca* (Giesbrecht, 1888), Female. 154. Habitus (lateral); 155. Posterior prosome (Lateral); 156. Rostrum (anterior); 157. Leg 5.

Bradford et al., 1983: fig. 58. *Scaphocalanus longifurca* (Giesbrecht, 1888), Female. A. leg 5. Male. B. leg 5 (anterior); C. right leg 5, exopod segments 1 and 2.

Adapted from Razouls C., de Bovée F., Kouwenberg J. and Desreumaux N., 2005–2020. Diversity and Geographic Distribution of Marine Planktonic Copepods. Sorbonne University, CNRS. Available at <http://copepodes.obs-banyuls.fr/en> [Accessed May 13 2021].

Scaphocalanus magnus (T. Scott, 1894) (Size: female, 3.55–5.60 mm; 4.02–5.28 mm)



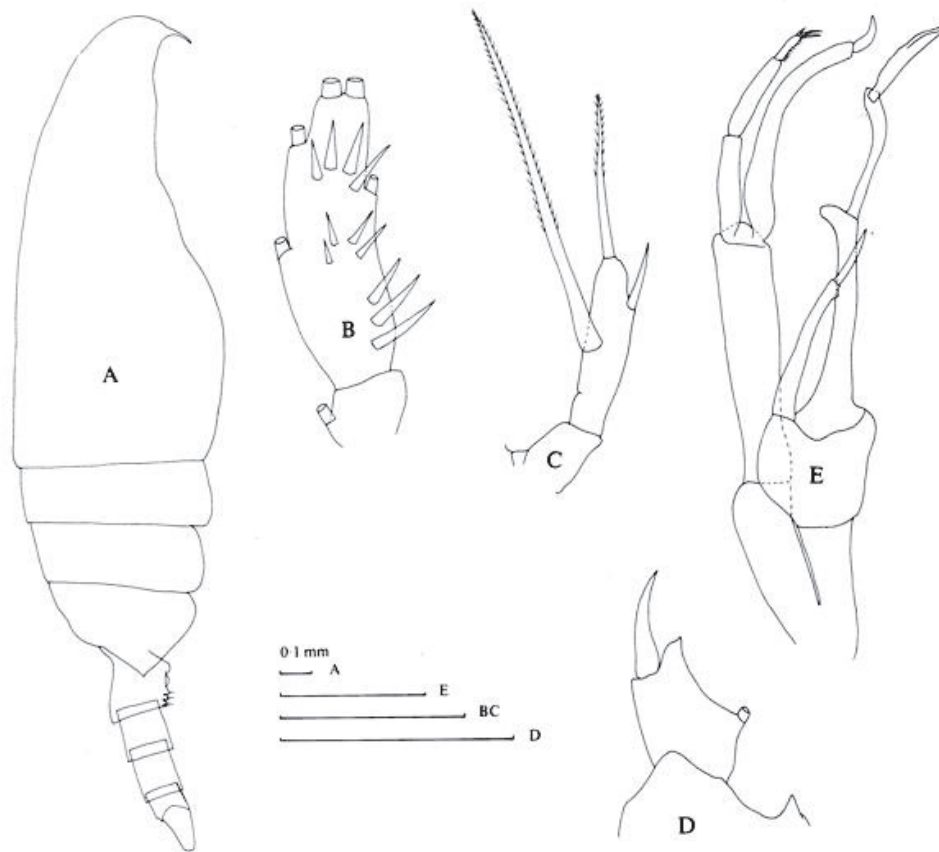
Scaphocalanus magnus (T. Scott, 1894)

Brodsky, 1950: fig. 156. *Scaphocalanus magnus* (T. Scott, 1894), Female. habitus (dorsal and lateral); forehead (lateral); R. rostrum (Arctic specimen): S1. Leg 1 (Arctic specimen); S5. Leg 5 (Arctic specimen). Male. habitus (dorsal); forehead (lateral); S5. Leg 5 (posterior).

Adapted from Razouls C., de Bovée F., Kouwenberg J. and Desreumaux N., 2005–2020. Diversity and Geographic Distribution of Marine Planktonic Copepods. Sorbonne University, CNRS. Available at <http://copepodes.obs-banyuls.fr/en> [Accessed April 13 20210].

Original. *Scaphocalanus magnus* (T. Scott, 1894), Female, 4.48 mm, South China Sea (7°42'N, 115°39'E, 2000 m.); a/b. habitus (dorsal/lateral); Mouth parts. c. right antenna (posterior); d. right mandible (posterior); e. right maxillure (posterior); f. right maxilla (posterior); g. right maxilliped (posterior); h-l. legs 1–5 (posterior), Scales: a, b = 1.0 mm; c, d, g-k = 0.5 mm; e, f, l = 0.2 mm.

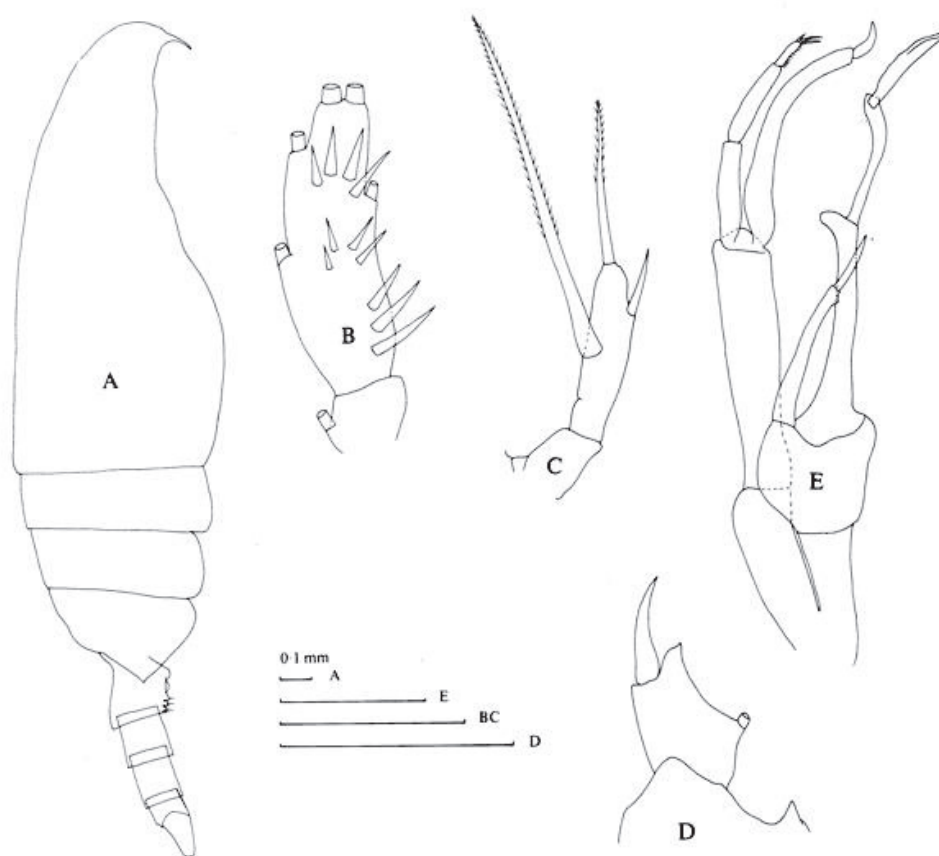
Scaphocalanus major (T. Scott, 1894) (Size: female, 2.20–3.16 mm; 1.80–3.30 mm)



Scaphocalanus major (T. Scott, 1894)

Bradford et al., 1983: fig. 60. *Scaphocalanus major* (T. Scott, 1894), Female. A. habitus (lateral); B. leg 2 endopod; C. leg 5. Male. D. leg 2 exopod segment 1; E. leg 5 (anterior).

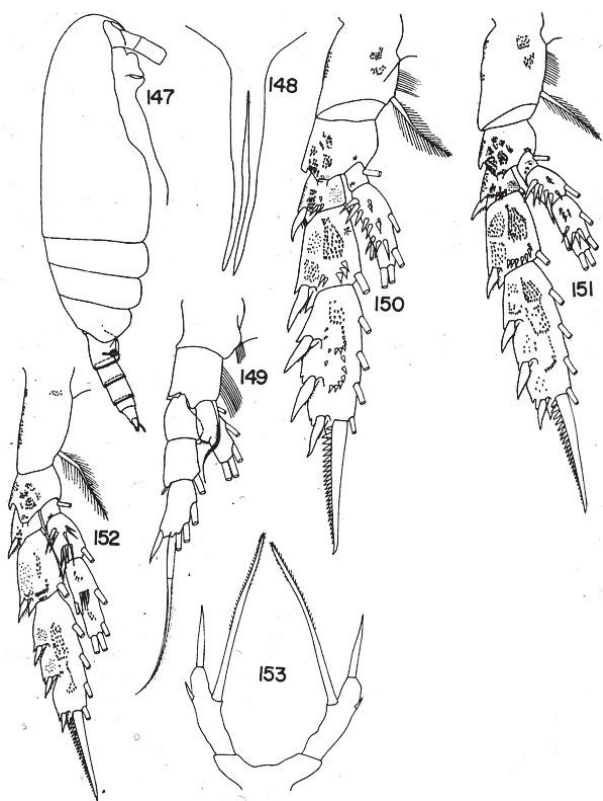
Adapted from Razouls C., de Bovée F., Kouwenberg J. and Desreumaux N., 2005–2020. Diversity and Geographic Distribution of Marine Planktonic Copepods. Sorbonne University, CNRS. Available at <http://copepodes.obs-banyuls.fr/en> [Accessed May 13 2021].

Scaphocalanus major (T. Scott, 1894)*Scaphocalanus major* (T. Scott, 1894)

Bradford et al., 1983: fig. 60. *Scaphocalanus major* (T. Scott, 1894), Female. A. habitus (lateral); B. leg 2 endopod; C. leg 5. Male. D. leg 2 exopod segment 1; E. leg 5 (anterior).

Adapted from Razouls C., de Bovée F., Kouwenberg J. and Desreumaux N., 2005–2020. Diversity and Geographic Distribution of Marine Planktonic Copepods. Sorbonne University, CNRS. Available at <http://copepodes.obs-banyuls.fr/en> [Accessed May 13 2021].

Scaphocalanus medius (G.O. Sars, 1907) (Size: female, 2.00–2.56 mm; male, 1.82 mm)



Scaphocalanus medius (G.O. Sars, 1907)

Park, 1970: figs. 147–153. *Scaphocalanus medius* (G.O. Sars, 1907), Female. 147. Habitus (lateral); 148. rostrum (anterior); 149, leg 1 (anterior); 150–152, legs 2–4 (posterior); 153. Leg 5.

Adapted from Razouls C., de Bovée F., Kouwenberg J. and Desreumaux N., 2005–2020. Diversity and Geographic Distribution of Marine Planktonic Copepods. Sorbonne University, CNRS. Available at <http://copepodes.obs-banyuls.fr/en> [Accessed May 13 2021].