



Key to the species of Pseudodiaptomidae Pseudodiaptomus occurring in the China Seas

Chang-tai Shih
National Taiwan Ocean University, ctshih@mail.ntou.edu.tw

Qing-Chao Chen
South China Sea Institute of Oceanology

Yang-Chi Lan
Fisheries Research Institute

Shih-Hui Hsiao
National Taipei University of Education

Chi-Yu Weng
Institute of Oceanography, National Taiwan University/Ocean Data Bank of the Ministry of National Science and Technology Council, Taiwan

Follow this and additional works at: <https://jmstt.ntou.edu.tw/journal>



Part of the [Fresh Water Studies Commons](#), [Marine Biology Commons](#), [Ocean Engineering Commons](#), [Oceanography Commons](#), and the [Other Oceanography and Atmospheric Sciences and Meteorology Commons](#)

Recommended Citation

Shih, Chang-tai; Chen, Qing-Chao; Lan, Yang-Chi; Hsiao, Shih-Hui; and Weng, Chi-Yu (2022) "Key to the species of Pseudodiaptomidae Pseudodiaptomus occurring in the China Seas," *Journal of Marine Science and Technology*: Vol. 30: Iss. 5, Article 69.

DOI: 10.51400/2709-6998.2660

Available at: <https://jmstt.ntou.edu.tw/journal/vol30/iss5/69>

This Review-Taxonomic Index is brought to you for free and open access by Journal of Marine Science and Technology. It has been accepted for inclusion in Journal of Marine Science and Technology by an authorized editor of Journal of Marine Science and Technology.

REVIEW-TAXONOMIC INDEX

Key to the Species of Pseudodiaptomidae *Pseudodiaptomus* Occurring in the China Seas (**Schmackeria* is Considered Synonymous with *Pseudodiaptomus*)

Chang-tai Shih ^{a,*}, Qing-Chao Chen ^b, Yang-Chi Lan ^c, Shih-Hui Hsiao ^d, Chi-Yu Weng ^e

^a National Taiwan Ocean University, Taiwan

^b South China Sea Institute of Oceanology, China

^c Fisheries Research Institute, Taiwan

^d National Taipei University of Education, Taiwan

^e Institute of Oceanography, National Taiwan University/Ocean Data Bank of the Ministry of National Science and Technology Council, Taiwan

Pseudodiaptomus annandalei(3a/34a/f), *bispinosus*(16a/23a/f), *bulbosus*(5b/33b/?), *forbesi*(6a/30a/f), *galleti*(25a/f), *incisus*(16c/22a/f), *inflatus*(31a/?) (male only), *inopinus*(8a/28a/f), *ishigakiensis*(14b/26a/f), *koreanus*(7a/34b/f), *marinus*(14a/26b/f), *nihonkaiensis*(12b/24a/f), *ornatus*(11a/17a/f), *pacificus*(10a/19a/f), *penincillus* (16c/23b), *poplesia*(8b/28b/f), *serricaudatus*(29a/f), *spatulatus*(5a/33a), *trihamatus*(15a/21a/f) (*female unknown: *inflatus*)

1a	Female	2
1b	Males.....	17
2a/1a	Leg 5: exopod segment 1 and basis nearly equal in length	3
2b	Leg 5: exopod segment 1 apparently longer than basis	9
3a/2a	Genital double-somite with a pair of lateral spines near base of the somite	<i>Pseudodiaptomus annandalei</i>
3b	Genital double-somite without lateral spines.....	4
4a/3b	Leg 5: exopod segment 1 distomedial corner without process	5
4b	Leg 5: exopod segment 1 distomedial corner with a process	6
5a/4a	Posterolateral corner of prosome with 2–3 spinules on dorsal surface. Leg 5: exopod segment 1 without setae on inner margin	<i>Pseudodiaptomus spatulatus</i>
5b	Posterolateral corner of prosome with a pair of triangular spines on dorsal surface. Leg 5: exopod segment 1 with setae on inner margin	<i>Pseudodiaptomus bulbosus</i>
6a/4b	All caudal setae normal. Leg 5: exopod segment 1 with blunt distomedial process	<i>Pseudodiaptomus forbesi</i>
6b	Inner terminal caudal seta lanceolate. Leg 5: exopod segment 1 with pointed distomedial process	7
7a/6b	Posterior margin of prosome without paired spinules. Leg 5: distomedial corner of exopod segment 1 with a beak-shaped process half as long as the segment	<i>Pseudodiaptomus koreanus</i>
7b	Posterior margin of prosome with a pair of spinules. Leg 5: distomedial corner of exopod segment 1 with a pointed process shorter than one half of the segment	8
8a/7b	Cephalosome with oblong front from dorsal view. Posterolateral corner of prosome rounded. Leg 5 exopod segment 2, inner distal process about one third as long as terminal spine	<i>Pseudodiaptomus inopinus</i>
8b	Cephalosome with triangular front from dorsal view. Posterolateral corner of prosome nearly squared. Leg 5 exopod segment 2, inner distal process about one-quarter as long as terminal spine.....	<i>Pseudodiaptomus poplesia</i>
9a/2b	Caudal ramus, length/width ratio <3	10
9b	Caudal ramus, length/width ratio >4	13
10a/9a	Pedigerous somite 1 with fleshy hyaline protuberances on dorsal posterior border. Posterolateral corners of prosome triangular.....	<i>Pseudodiaptomus pacificus</i>

Available online 14 November 2022

* Corresponding author.

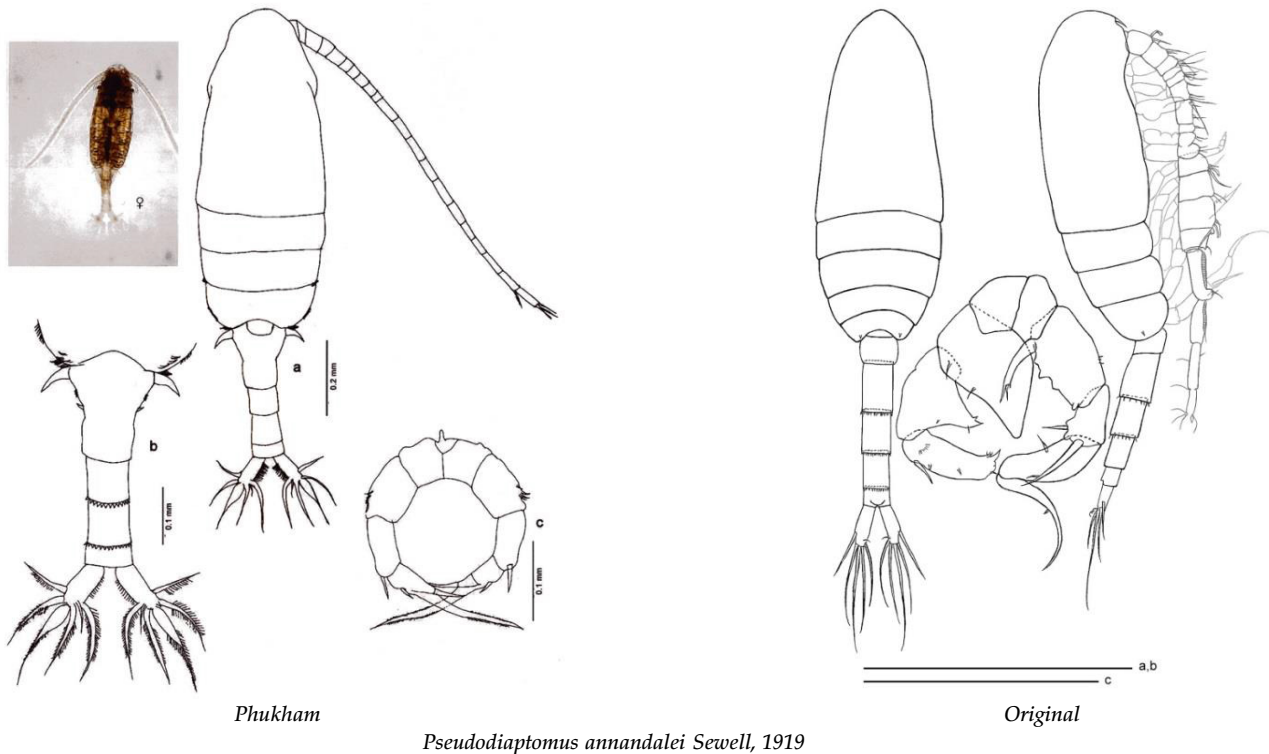
E-mail address: ctshih@mail.ntou.edu.tw (C.-t. Shih).



10b	Pedigerous somite 1 without fleshy hyaline protuberances on dorsal posterior border. Posterolateral corners of prosome rounded or pointed	11
11a/10b	Posterolateral corners of prosome with a spine on dorsal surface near posterior margin of prosome. Leg 5 asymmetrical, exopod segment 1 of right leg 5 with an elongate inner distal process reaching midlength of exopod segment 2; without such process on left leg	<i>Pseudodiaptomus ornatus</i>
11b	Posterolateral corners of prosome without spine on dorsal surface near posterior margin of prosome. Leg 5 symmetrical	12
12a/11b	Posterolateral corners of prosome rounded with a small nipple-like process. Genital double-somite asymmetrical, left margin slightly curved inward. Leg 5: outer margin of exopod segment 1 not lined with spinules	<i>Pseudodiaptomus serricaudata</i>
12b	Posterolateral corners of prosome pointed. Genital double-somite more or less symmetrical. Leg 5: outer margin of exopod segment 1 lined with spinules	<i>Pseudodiaptomus nihonkaiensis</i>
13a/9b	Leg 5: exopod segment 2 with 1 distomedial process, 1 terminal spine and 1 distal outer seta; distomedial process about 80% as long as terminal spine, terminal spine with a short inner process near proximal end	14
13b	Leg 5: exopod segment 2 structured differently	15
14a/13a	Projections of posterolateral corners of prosome slightly diverged. Genital double-somite asymmetrical, left margin swelled in proximal half	<i>Pseudodiaptomus marinus</i>
14b	Projections of posterolateral corners of prosome small and pointed posteriorly. Genital double-somite symmetrical	<i>Pseudodiaptomus ishigakiensis</i>
15a/13b	Genital double-somite with 2 spines on left posterior margin. Leg 5 basis with a protrusion at lateral distal corner	<i>Pseudodiaptomus trihamatus</i>
15b	None of these characters present	16
16a/15b	Genital double-somite, in dorsal view, left posterior margin slightly expanded, slightly longer than the combined length of urosomites 2–4. Leg 5: tufts of spinules on anterior surface of basis and exopod segment 1	<i>Pseudodiaptomus bispinosus</i>
16b	Genital double-somite, in dorsal view, posterior margin straight, shorter than the combined length of urosomites 2–4. Leg 5: anterior surface of basis and exopod segment 1 without tufts of spinules	<i>Pseudodiaptomus incisus</i>
16c	Genital double-somite, in dorsal view, left margin undulating, right posterior margin with 2 spine	<i>Pseudodiaptomus penicillus</i>
17a/1b	One pair of dorsally inserted spines near posterior margin of prosome	<i>Pseudodiaptomus ornatus</i>
17b	No such spines near posterior margin of prosome	18
18a/17b	Posterolateral corners of prosome forming a pair of small triangular processes	19
18b	Posterolateral corners of prosome rounded	27
19a/18a	Posterior border of pediger 1 with a pair of dorsal hyaline protuberances	<i>Pseudodiaptomus pacificus</i>
19b	No such dorsal hyaline protuberances	20
20a/19b	Left leg 5 exopod segment 2 outer margin with deeply excavated hyaline process	21
20b	Left leg 5 exopod segment 2 without such process on outer margin	24
21a/20a	Left leg 5 coxa and basis each with a strong sharply pointed inner distal process	<i>Pseudodiaptomus trihamatus</i>
21b	Left leg 5 coxa and basis without inner distal process	22
22a/21b	Left leg 5 exopod segments 1 and 2 fused; right leg 5 basis without outer distal spine	<i>Pseudodiaptomus incisus</i>
22b	Left leg exopod segments 1 and 2 separate; right leg 5 basis with outer distal spine	23
23a/22b	Right leg 5, exopod segment 3 with 2 inner spines; endopod 3-pronged, all prongs with similar length	<i>Pseudodiaptomus bispinosus</i>
23b	Right leg 5, exopod segment 3 without inner spine; endopod 3-pronged, inner prong more than 8 times as long as other prongs	<i>Pseudodiaptomus penicillus</i>
24a/20b	Left leg 5 endopod small, oblong, and shorter than exopod segment 1. Right leg 5 endopod with a lamelliform plate at inner proximal base	<i>Pseudodiaptomus nihonkaiensis</i>
24b	Endopods of both leg 5 structurally differently	25
25a/24b	Right leg 5 endopod two pronged, inner prong twice as long as outer prong and bearing a globular swelling near inner distal end	<i>Pseudodiaptomus galleti</i>
25b	Right leg 5 endopod two pronged, inner and outer prongs about subequal in length, inner prong 6 single and slender, outer prong with trifid terminal	26
26a/25b	Left leg 5: exopod segment 1 with a minute outer distal spine; endopod with row of spinules on distal inner margin	<i>Pseudodiaptomus ishigakiensis</i>
26b	Left leg 5: exopod segment 1 with a strong outer distal spine as long as the segment; endopod naked	<i>Pseudodiaptomus marinus</i>
27a/18b	Left leg 5 exopod, segment 1 nearly rectangular, length about twice width; segment 2 with rounded distal end, a spine at outer distal corner and about half as long as the segment, inner distal corner extended forming a ribbon-like structure about as long as the segment	28
27b	Left leg 5 structurally different	29
28a/27a	A pair of small spines near posterior margin of prosome. Caudal rami parallel. A tubercle about one-quarter width of basis on anterior surface of basis near inner proximal corner	<i>Pseudodiaptomus inopinatus</i>
28b	No spines near posterior margin of prosome. Caudal rami diverged. Right leg 5, a tubercle about one-half width of basis on anterior surface of basis near inner proximal corner	<i>Pseudodiaptomus poplesia</i>
29a/27b	Left leg 5 endopod elongate and belt-like, extending to distal end of exopod segment 2 and with setose inner margin	<i>Pseudodiaptomus serricaudatus</i>

29b	Left leg 5 endopod different in structure	30
30a/29b	Left leg exopod segment 2 with a globular outgrowth on inner margin, almost as large as the segment	<i>Pseudodiaptomus forbesi</i>
30b	No such outgrowth on exopod segment 2 of left leg 5	31
31a/30b	Left leg 5 basis inner margin expanded forming a massive protrusion; exopod segment 2 inner margin with a hooked protrusion and bearing a terminal robust spine.....	<i>Pseudodiaptomus inflatus</i>
31b	Left leg 5 basis inner margin extending forming a hooked extension nearly reaching distal end of exopod segment 2....	32
32a/31b	Right leg 5 basis with a finger-like protrusion near proximal end of inner margin and with a triangular process distal to the finger-like protrusion	33
32b	Right leg 5 basis structured differently	34
33a/32a	Left leg 5 exopod segment 2 oblong, as long as exopod segment 1, a strong spine arising from middle of outer margin, 2 small haired papillar tubercles at proximal inner corner.....	<i>Pseudodiaptomus spatulatus</i>
33b	Left leg 5 exopod segment 2 nearly rectangular and one-fifth length of exopod segment 1, with an inner finger-like process, a small haired globular process distal to the finger-like process, and an outer triangular process	<i>Pseudodiaptomus bulbosus</i>
34a/32b	Left leg 5 basis, inner margin expanded medially forming a pointed protrusion; exopod segment 1, inner margin expanded medially forming a massive triangular process with 2 small pointed processes.....	<i>Pseudodiaptomus amandalei</i>
34b	Left leg 5 basis, inner margin expanded medially and distally forming a pointed process nearly reaching distal end of exopod segment 2, a robust triangular process arising from middle inferior margin of the process; exopod segment 1 rectangular, without processes on inner margin	<i>Pseudodiaptomus koreanus</i>

Pseudodiaptomus annandalei Sewell, 1919 (Size: female, 1.05–1.38 mm; male, 0.94–1.13 mm)

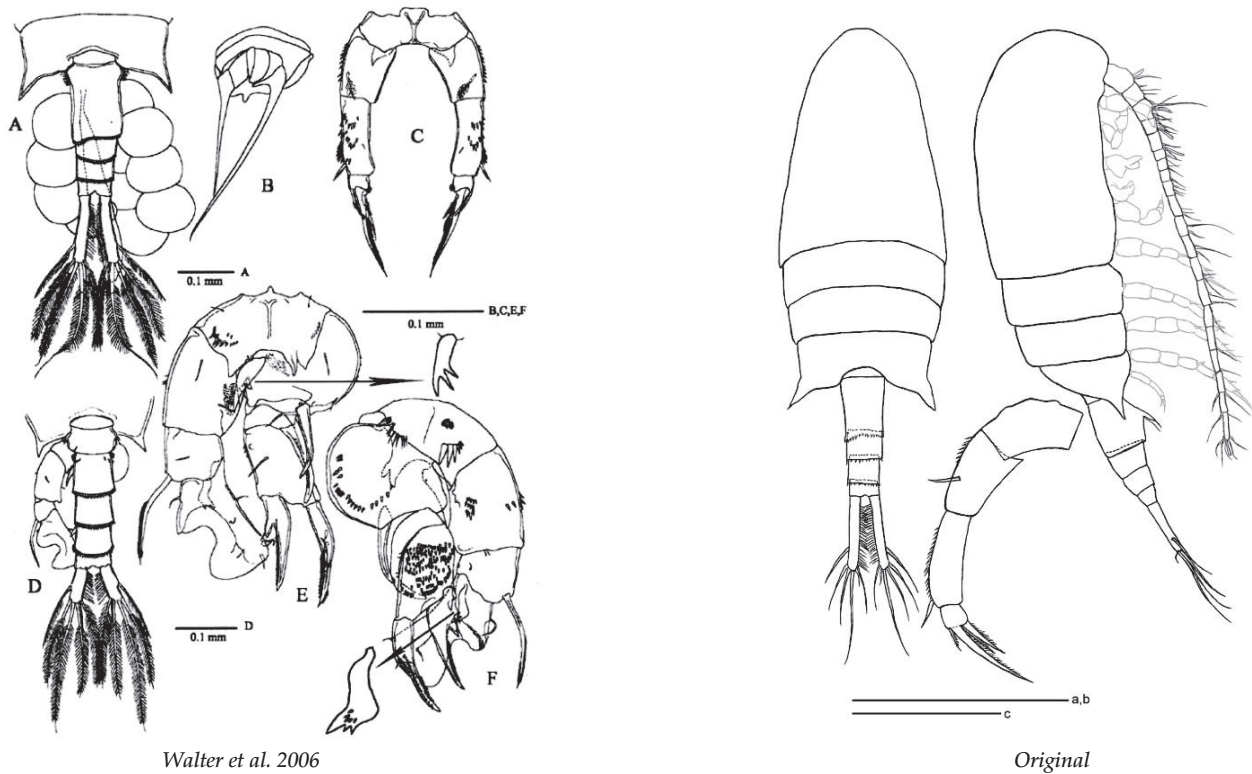


Phukham, 2008: *Pseudodiaptomus annandalei* Sewell, 1919, female Fig. 60. a. habitus (dorsal); b. urosome (dorsal); c. leg 5.

Adapted from Razouls C., de Bovée F., Kouwenberg J. and Desreumaux N., 2005–2020. Diversity and Geographic Distribution of Marine Planktonic Copepods. Sorbonne University, CNRS. Available at <http://copepodes.obs-banyuls.fr/en> [Accessed May 05 2021].

Original. *Pseudodiaptomus annandalei* Sewell, 1919, Male, 0.98 mm, East of Taiwan (22°41'N, 121°04'E): a/b. habitus (dorsal/lateral); c. left leg 5 (posterior). Scales: a, b = 0.5 mm; c = 0.2 mm.

Pseudodiaptomus bispinosus Walter, 1984 (Size: female, 1.15–1.30 mm; male, 0.94–1.10 mm)



Walter et al. 2006

Pseudodiaptomus bispinosus Walter, 1984

Original

Walter et al., 2006: Fig. 4. *Pseudodiaptomus bispinosus* Walter, 1984, Female. A. posterior prosome & urosome (dorsal); B. genital area (ventral); C. leg 5 (anterior). Male. D. posterior prosome & urosome (dorsal); E. leg 5 (posterior, arrow showed detail of tricusperate endopod); F. leg 5 (anterior, arrow showed detail of proximal process on left exopod segment 2).

Adapted from Razouls C., de Bovée F., Kouwenberg J. and Desreumaux N., 2005–2020. Diversity and Geographic Distribution of Marine Planktonic Copepods. Sorbonne University, CNRS. Available at <http://copepodes.obs-banyuls.fr/en> [Accessed May 05 2021].

Original. *Pseudodiaptomus bispinosus* Walter, 1984, Female, 1.26 mm, Taiwan Strait (22°49'N, 121°11'E): a/b. habitus (dorsal/lateral); c. left leg 5 (posterior). Scales: a,b = 0.5 mm; c = 0.2 mm.

Pseudodiaptomus forbesi (Poppe & Richard, 1890) (Size: female, 1.15–1.40 mm; male, 1.06–1.20 mm)

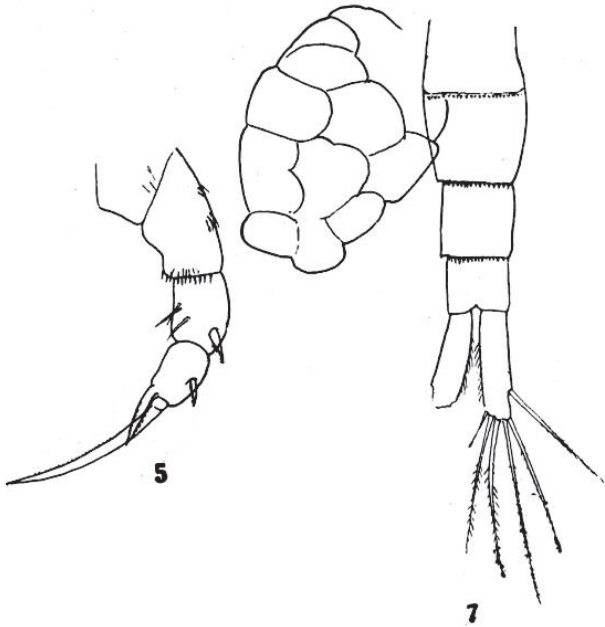


Plate 21

Pseudodiaptomus forbesi (Poppe & Richard, 1890)

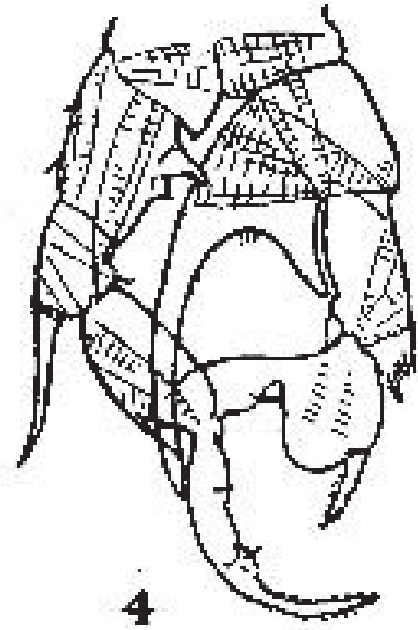


Plate 22

Marsh, 1933, pl. 21, figs. 5,7, as *Schmackera forbesi*. *Pseudodiaptomus forbesi* (Poppe & Richard, 1890), Female (from Yangtze Kiang), 5. Leg 5; 7. Urosome with egg sac (dorsal) pl. 22, Fig. 4, leg 5.

Adapted from Razouls C., de Bovée F., Kouwenberg J. and Desreumaux N., 2005–2020. Diversity and Geographic Distribution of Marine Planktonic Copepods. Sorbonne University, CNRS. Available at <http://copepodes.obs-banyuls.fr/en> [Accessed May 05 2021].

Pseudodiaptomus galleti (Rose, 1957) (Size: female, 1.20–1.30 mm; male, 1.00–1.10 mm)

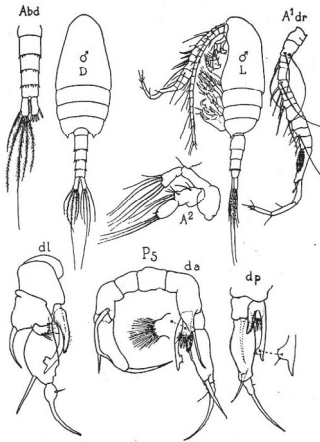


Fig. 4

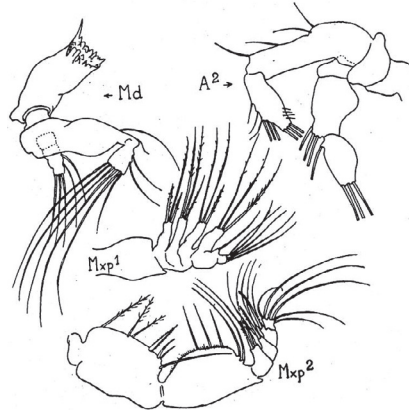


Fig. 5

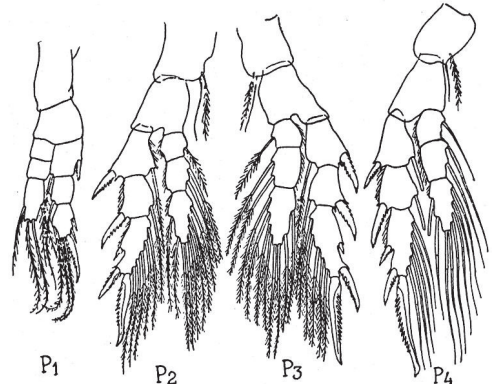
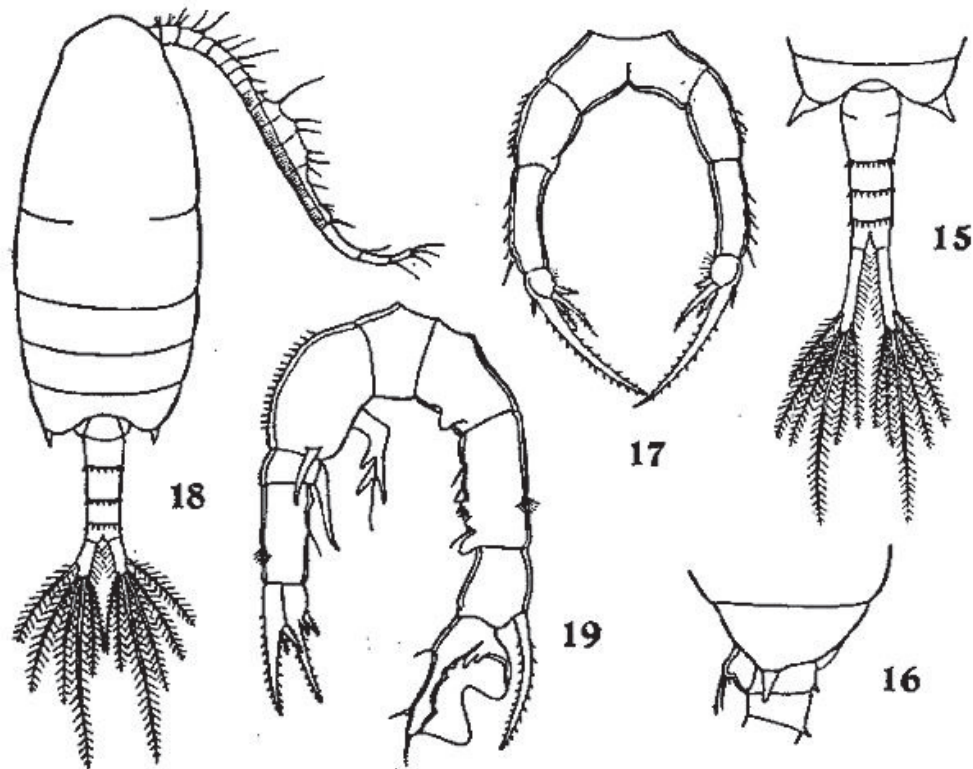


Fig. 6

Pseudodiaptomus galleti (Rose, 1957)

Rose., 1957. As *Mazellina Galleti*. *Pseudodiaptomus galleti* (Rose, 1957), Fig. 4. Male: Abd, urosome (dorsal); D, habitus (dorsal); L, idem (lateral left side); A1 dr, right antennule; A2, antenna; d a, P5; d l, right leg 5 (lateral view); d p, right leg 5 (posterior view). Fig. 5. Male: Md, mandible; A2, antenna; Mxp1, maxilla; Mxp2, maxilliped. Fig. 6. Male: 6, swimming legs 1 to 4.

Pseudodiaptomus incisus Shen & Lee, 1963 (Size: female, 1.15 mm; male, 0.85 mm)



Pseudodiaptomus incisus Shen & Lee, 1963

Shen & Lee, 1963: figs 15–19. *Pseudodiaptomus incisus* Shen & Lee, 1963, Female (from Luichow Peninsula, South China Sea). 15. urosome (dorsal); 16. pediger 5 and genital double-somite (lateral); 17. leg 5. Male. 18. habitus (dorsal); 19. leg 5 (anterior).

Adapted from Razouls C., de Bovée F., Kouwenberg J. and Desreumaux N., 2005–2020. Diversity and Geographic Distribution of Marine Planktonic Copepods. Sorbonne University, CNRS. Available at <http://copepodes.obs-banyuls.fr/en> [Accessed May 05 2021].

Pseudodiaptomus inopinus Burchardt, 1913 (size: female, 1.10–2.20 mm; male, 0.90–1.85 mm)

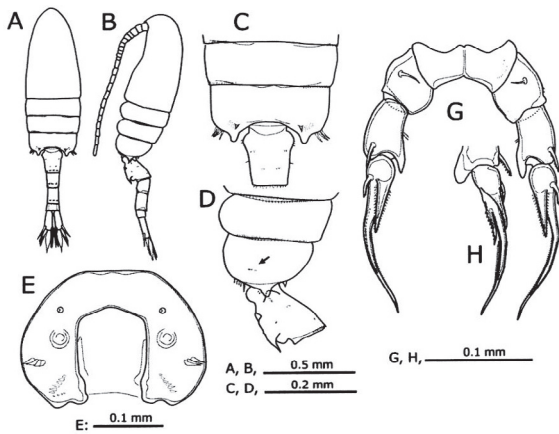


Fig. 4A-E/G/H

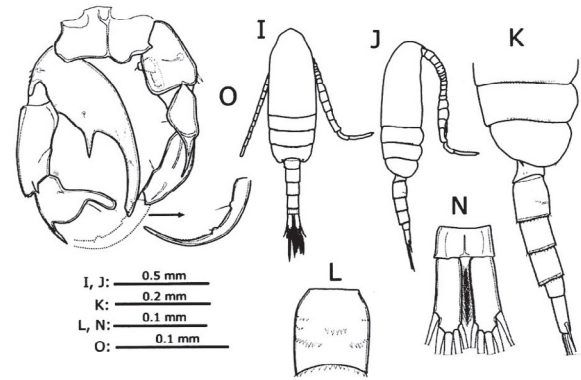
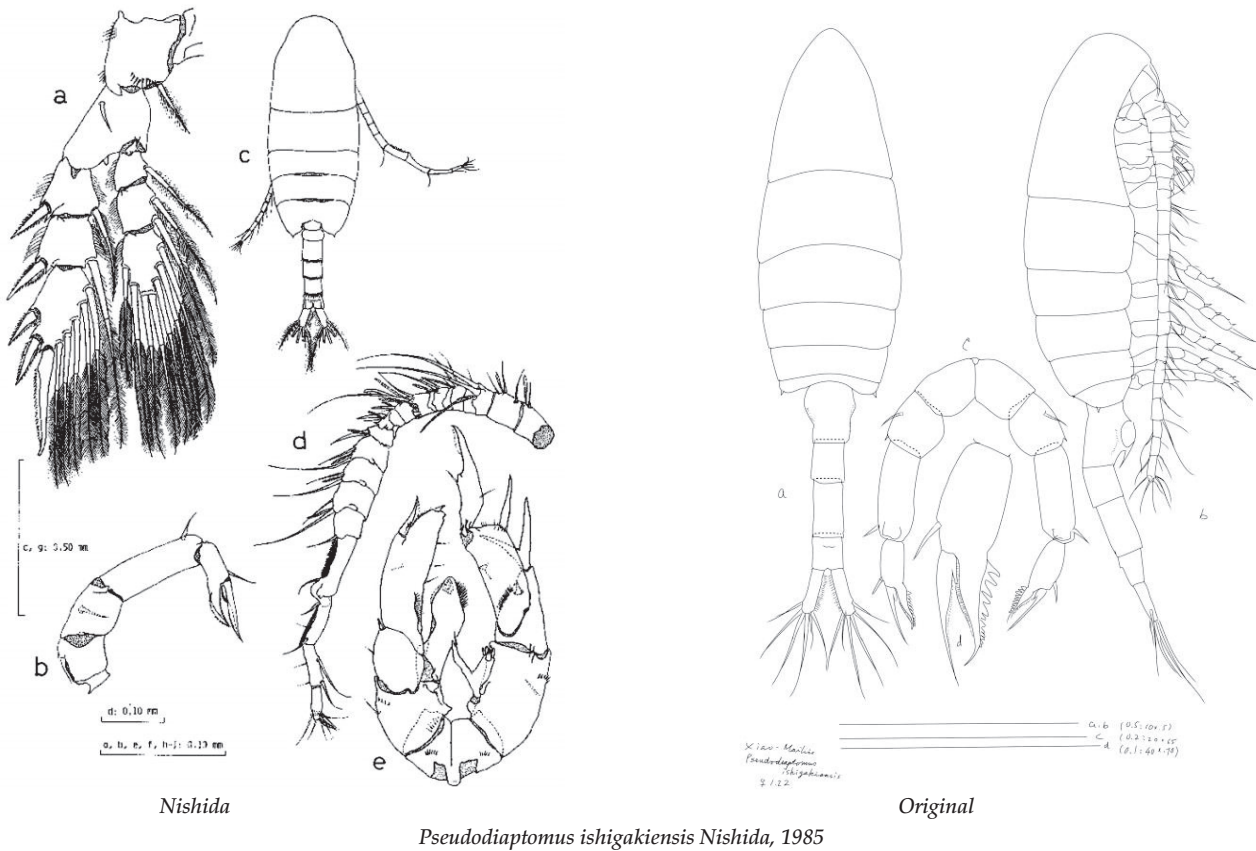


Fig. 4I-L/NO

Pseudodiaptomus inopinus Burchardt, 1913

Ueda & Sakaguchi, 2010. Fig. 4A-E/G/H. Female (from Lake Taihu, China): A/B, habitus (dorsal/lateral); C/ D, 3rd pediger to genital double-somite (dorsal/lateral); E, last pediger (posterior); G, leg 5; H, right leg 5. Fig. 4I-L/N/O. Male (from Lake Taihu, China): I/J, habitus (dorsal/lateral); K, last three pedigers and urosome (lateral); L, 2nd urosomite (ventral); N, anal somite and caudal rami (dorsal); O, P5 (posterior).

Pseudodiaptomus ishigakiensis Nishida, 1985 (Size: female, 1.20–2.91 mm; male, 1.01–1.05 mm)

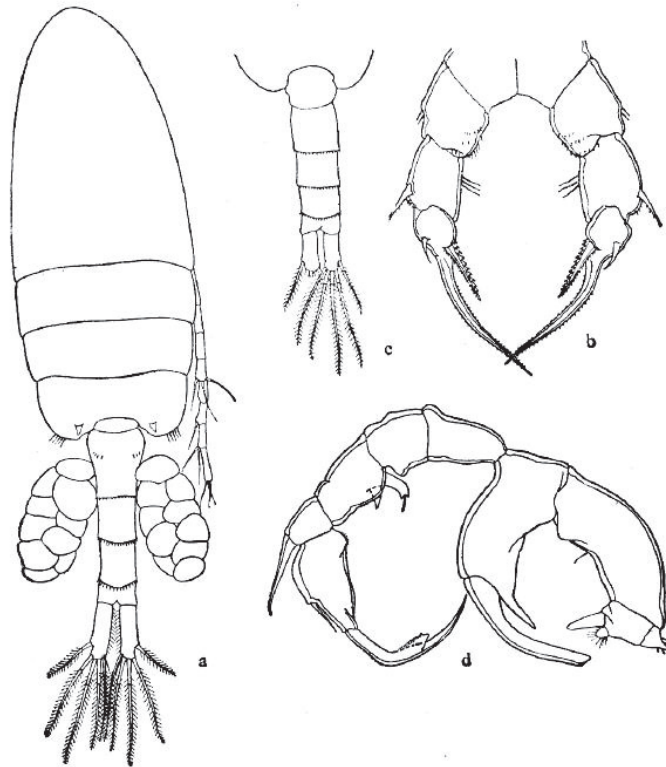


Nishida, 1985: Fig. 4. *Pseudodiaptomus ishigakiensis* Nishida, 1985, Female. a. leg 4; b. leg 5. Male. c. habitus (dorsal); d. right antennule (ventral); e. leg 5 (anterior).

Adapted from Razouls C., de Bovée F., Kouwenberg J. and Desreumaux N., 2005–2020. Diversity and Geographic Distribution of Marine Planktonic Copepods. Sorbonne University, CNRS. Available at <http://copepodes.obs-banyuls.fr/en> [Accessed May 05 2021].

Original. *Pseudodiaptomus ishigakiensis* Nishida, 1985 Female, 1.22 mm, Taiwan Strait. a/b. habitus (dorsal/lateral); c. leg 5; d. enlargement of exopod segment 2 of leg 5. Scales: a, b = 0.50 mm; c = 0.20 mm; d = 0.10 mm.

Pseudodiaptomus bulbosus (Shen & Tai 1964) (Size: female, 1.33 mm; male, 0.89 mm)



Pseudodiaptomus bulbosus (Shen & Tai 1964)

Shen & Song, 1979: Fig. 32. Female. a. habitus (dorsal); b. leg 5. Male. c. urosome (dorsal); d. leg 5 (anterior).

Pseudodiaptomus forbesi (Poppe & Richard, 1890) (Size: female, 1.15–1.40 mm; male, 1.06–1.20 mm)

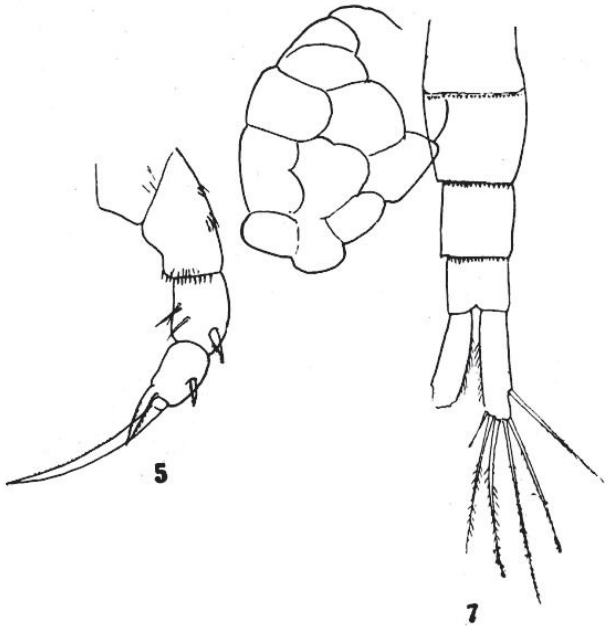


Plate 21

Pseudodiaptomus forbesi (Poppe & Richard, 1890)

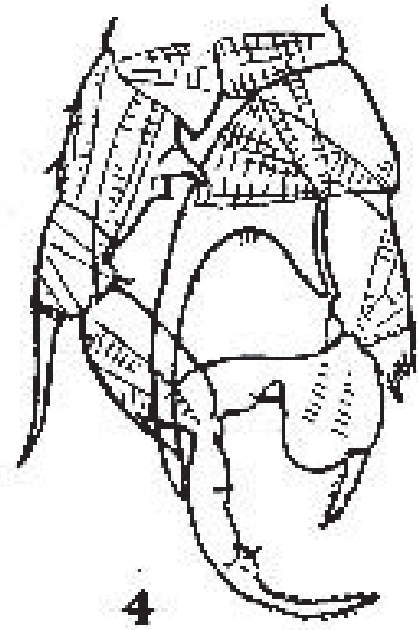


Plate 22

Marsh, 1933, pl. 21, figs. 5,7, as *Schmackera forbesi*. *Pseudodiaptomus forbesi* (Poppe & Richard, 1890), Female (from Yangtze Kiang), 5. Leg 5; 7. Urosome with egg sac (dorsal) pl. 22, male, Fig. 4, leg 5.

Adapted from Razouls C., de Bovée F., Kouwenberg J. and Desreumaux N., 2005–2020. Diversity and Geographic Distribution of Marine Planktonic Copepods. Sorbonne University, CNRS. Available at <http://copepodes.obs-banyuls.fr/en> [Accessed May 05 2021].

Pseudodiaptomus galleti (Rose, 1957) (Size: female, 1.20–1.30 mm; male, 1.00–1.10 mm)

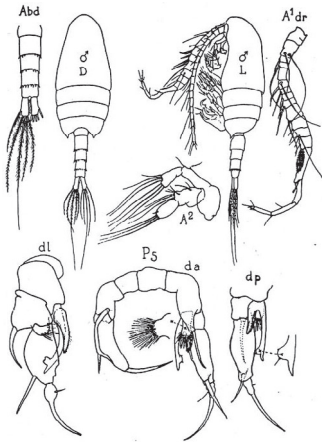


Fig. 4

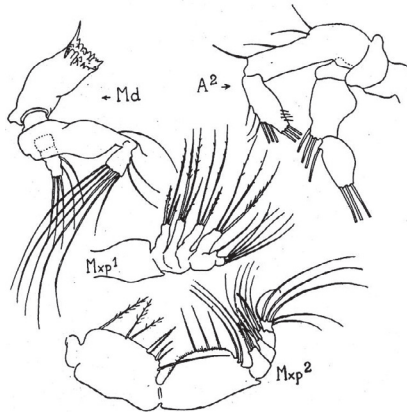


Fig. 5

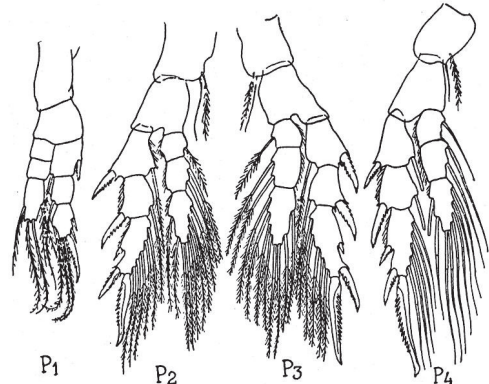
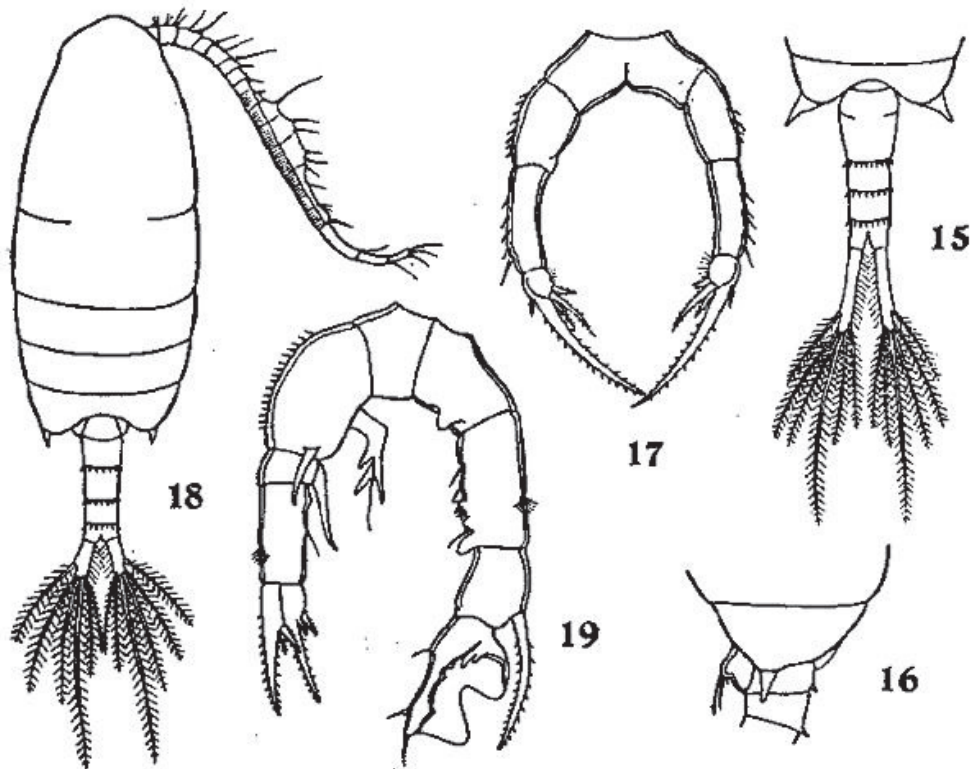


Fig. 6

Pseudodiaptomus galleti (Rose, 1957)

Rose., 1957. Rose, 1957. As *Mazellina Galleti*. *Pseudodiaptomus galleti* (Rose, 1957), Fig. 4. Male: Abd, urosome (dorsal); D, habitus (dorsal); L, idem (lateral left side); A1 dr, right antennule; A2, antenna; d a, P5; d l, right leg 5 (lateral view); d p, right leg 5 (posterior view). Fig. 5. Male: Md, mandible; A2, antenna; Mxp1, maxilla; Mxp2, maxilliped. Fig. 6. Male: 6, swimming legs 1 to 4.

Pseudodiaptomus incisus Shen & Lee, 1963 (Size: female, 1.15 mm; male, 0.85 mm)

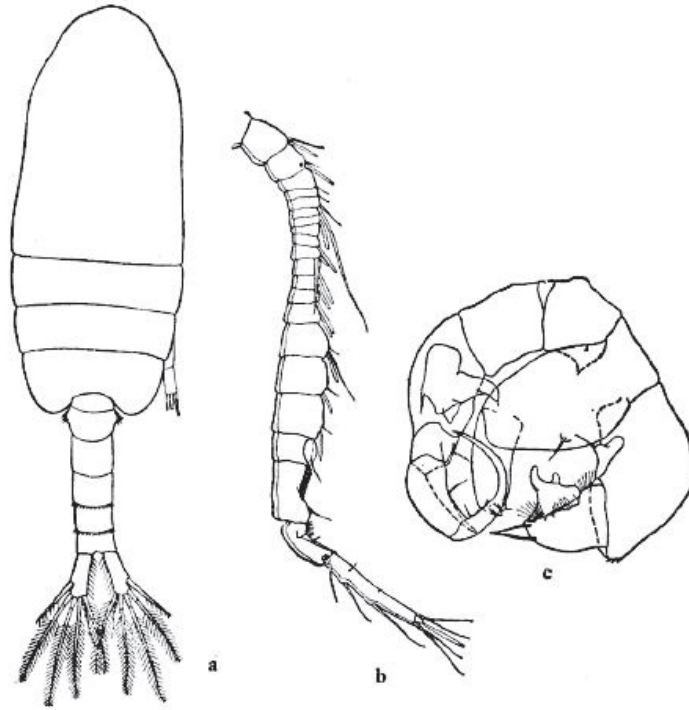


Pseudodiaptomus incisus Shen & Lee, 1963

Shen & Lee, 1963: figs 15–19. *Pseudodiaptomus incisus* Shen & Lee, 1963, Female (from Luichow Peninsula, South China Sea). 15. urosome (dorsal); 16. pediger 5 and genital double-somite (lateral); 17. leg 5. Male. 18. habitus (dorsal); 19. leg 5 (anterior).

Adapted from Razouls C., de Bovée F., Kouwenberg J. and Desreumaux N., 2005–2020. Diversity and Geographic Distribution of Marine Planktonic Copepods. Sorbonne University, CNRS. Available at <http://copepodes.obs-banyuls.fr/en> [Accessed May 05 2021].

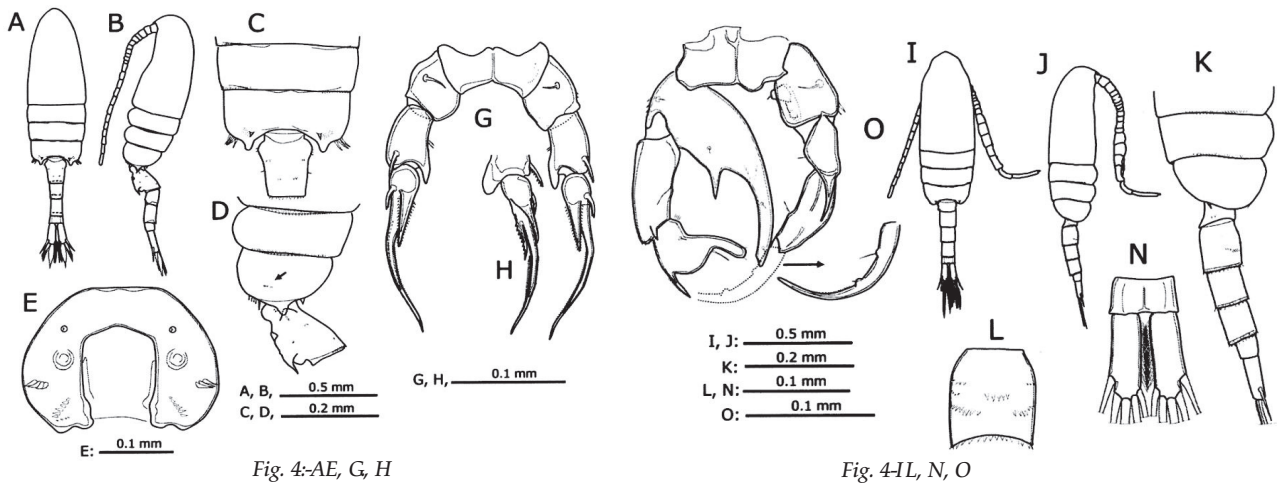
Pseudodiaptomus inflatus (Shen & Tai, 1964) (Size: female, unknown; male, 1.02 mm)



Pseudodiaptomus inflatus(Shen & Tai 1964)

Shen & Song, 1979: Fig. 33. *Pseudodiaptomus inflatus* (Shen & Tai 1964), Male. a. habitus (dorsal); b. antennule. c. leg 5. (anterior).

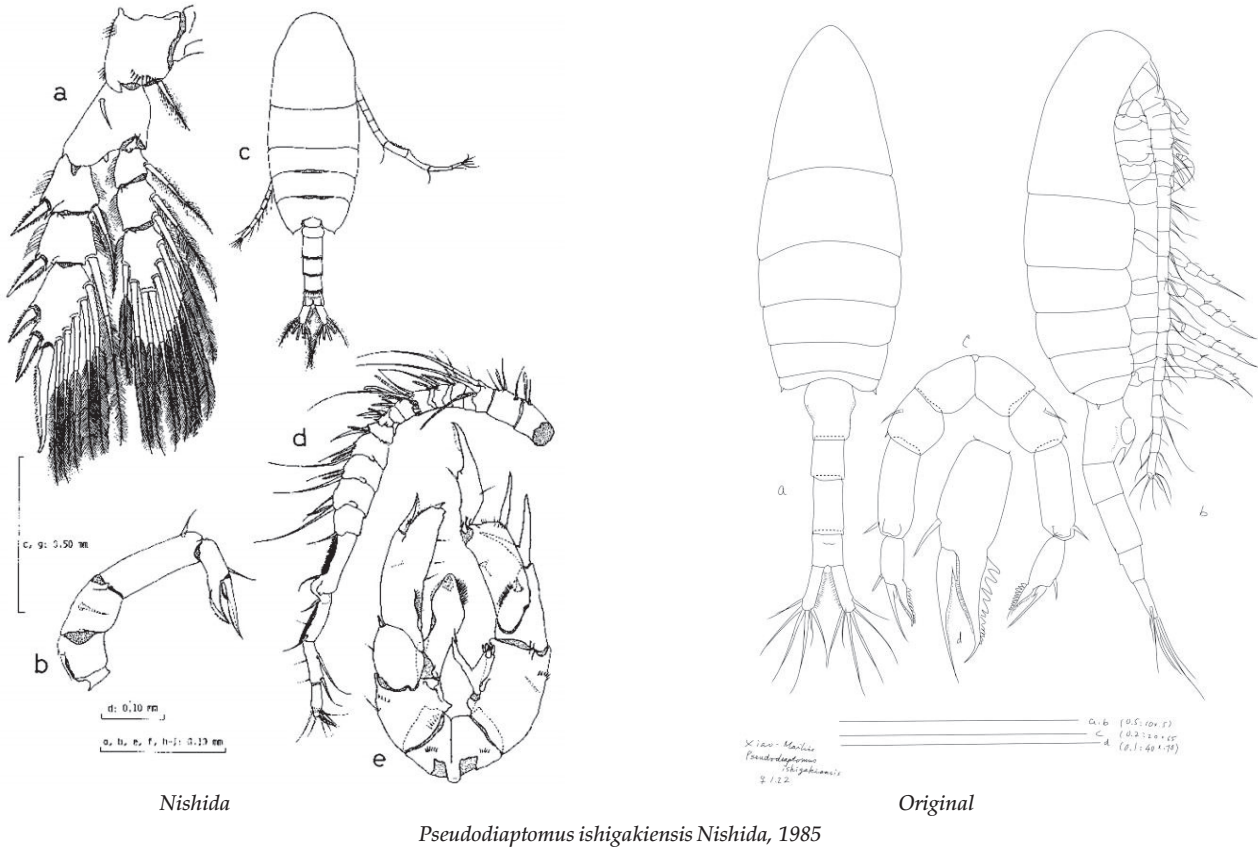
Pseudodiaptomus inopinus Burchardt, 1913 (size: female, 1.10–2.20 mm; male, 0.90–1.85 mm)



Pseudodiaptomus inopinus Burchardt, 1913

Ueda & Sakaguchi, 2010. Fig. 4, A-E, G, H. Female (from Lake Taihu, China): A/B, habitus (dorsal/lateral); C/D, 3rd pediger to genital double-somite (dorsal/lateral); E, last pediger (posterior); G, leg 5; H, right leg 5. Male (from Lake Taihu, China): I/J, habitus (dorsal/lateral); K, last three pedigers and urosome (lateral); L, 2nd urosomite (ventral); N, anal somite and caudal rami (dorsal); O, P5 (posterior).

Pseudodiaptomus ishigakiensis Nishida, 1985 (Size: female, 1.20–2.91 mm; male, 1.01–1.05 mm)



Nishida, 1985: Fig. 4. *Pseudodiaptomus ishigakiensis* Nishida, 1985, Female. a. leg 4; b. leg 5. Male. c. habitus (dorsal); d. right antennule (ventral); e. leg 5 (anterior).

Adapted from Razouls C., de Bovée F., Kouwenberg J. and Desreumaux N., 2005–2020. Diversity and Geographic Distribution of Marine Planktonic Copepods. Sorbonne University, CNRS. Available at <http://copepodes.obs-banyuls.fr/en> [Accessed May 05 2021].

Original. *Pseudodiaptomus ishigakiensis* Nishida, 1985 Female, 1.22 mm, Taiwan Strait. a/b. habitus (dorsal/lateral); c. leg 5; d. enlargement of exopod segment 2 of leg 5. Scales: a, b = 0.50 mm; c = 0.20 mm; d = 0.10 mm.

Pseudodiaptomus koreanus Soh, Kwon, Lee & Yoon, 2012 (Size: female, 1.30–1.50 mm; male, 1.10–1.20 mm)

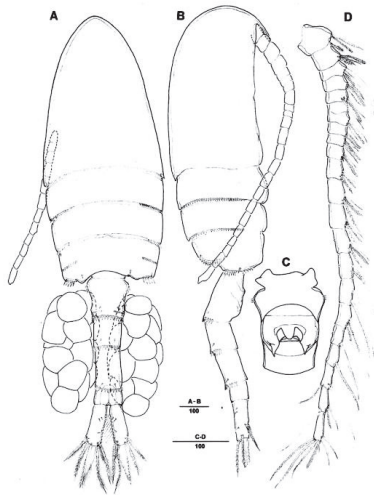


Fig. 2

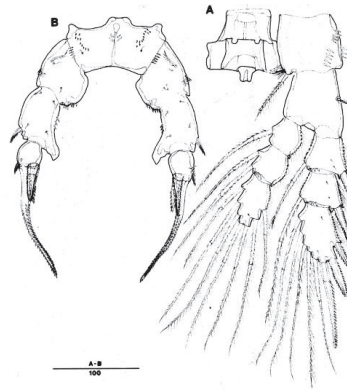


Fig. 6

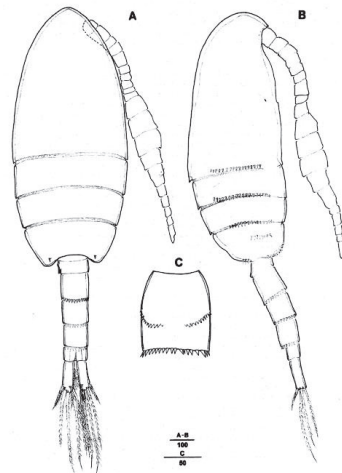


Fig. 7

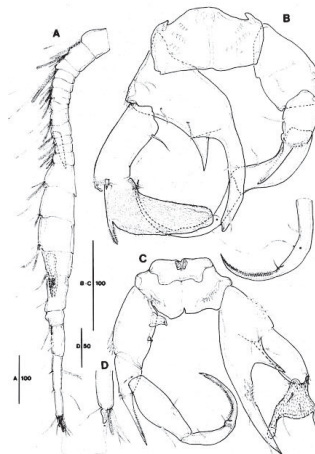


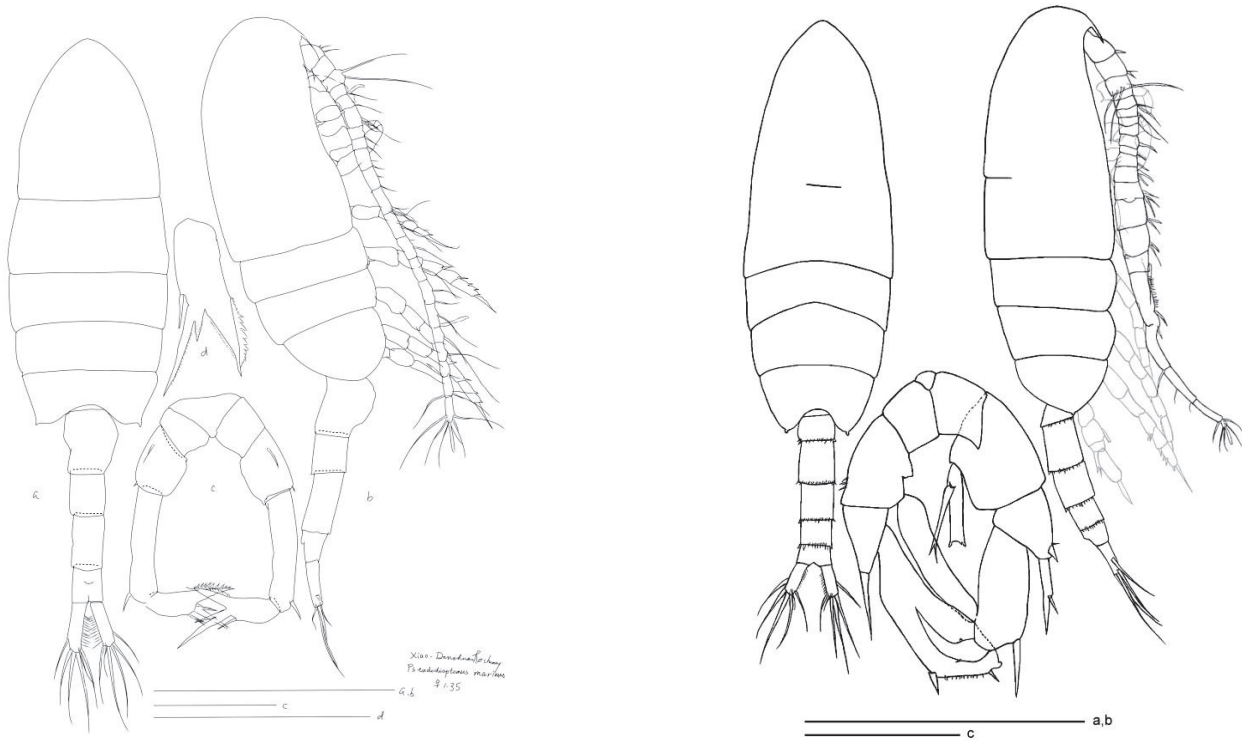
Fig. 8

Pseudodiaptomus koreanus Soh, Kwon, Lee & Yoon, 2012

Soh et al., 2012: figs. Female. Fig. 2. A/B habitus (dorsal/lateral); C. genital double-somite (ventral); D. antennule. Fig. 6. A. leg 4; B. leg 5. Male. Fig. 7. A/B. habitus (dorsal/lateral); C. urosomite 2 (ventral). Fig. 8. A. right antennule; B. leg 5, paddle-shape (posterior); C. leg 5, finger-shape (anterior); D. right leg 5, detail of outer distal process of basis.

Adapted from Razouls C., de Bovée F., Kouwenberg J. and Desreumaux N., 2005–2020. Diversity and Geographic Distribution of Marine Planktonic Copepods. Sorbonne University, CNRS. Available at <http://copepodes.obs-banyuls.fr/en> [Accessed May 05 2021].

Pseudodiaptomus marinus Sato, 1913 (Size: female, 1.21–1.45 mm; male, 0.85–1.20 mm)



Female

Pseudodiaptomus marinus Sato, 1913

Male

Original. *Pseudodiaptomus marinus* Sato, 1913, Female. 1.22 mm, Taiwan Strait (23°45'N, 119°57'E): a/b (habitus/lateral); c. leg 5 (posterior); d. left leg 5, enlargement of distal segment (posterior). Scales: a, b = 0.5 mm; c = 0.2 mm; d = 0.1 mm. Male, 0.98 mm, Taiwan Strait (23°45'N, 119°57'E): a/b. habitus (dorsal/lateral); c. leg 5 (posterior). Scales: a, b = 0.5 mm; c = 0.1 mm.

Pseudodiaptomus nihonkaiensis Hirakawa, 1983 (Size: female, 1.08–1.30 mm; male, 0.85–1.28 mm)

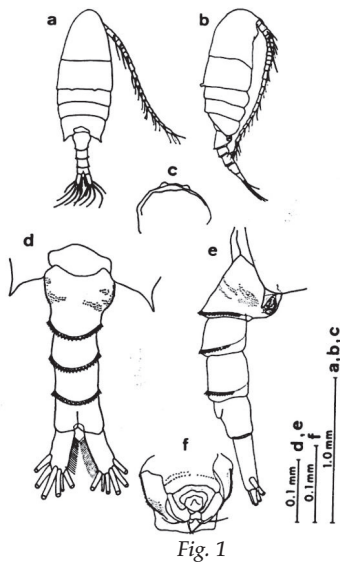


Fig. 1

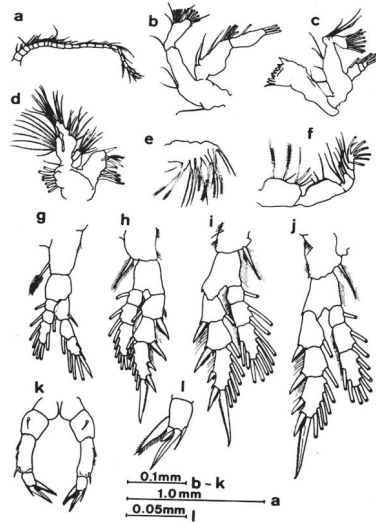


Fig. 2

Pseudodiaptomus nihonkaiensis Hirakawa, 1983

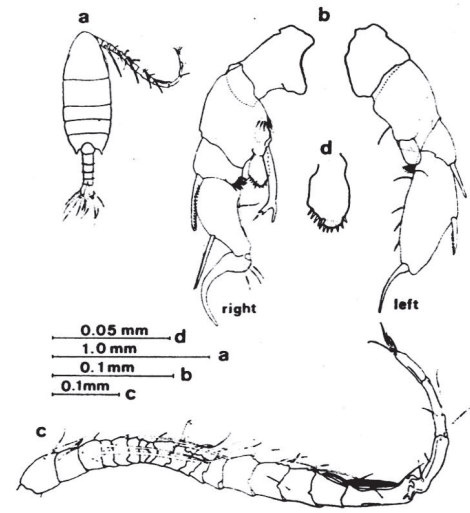


Fig. 3

Hirakawa, 1983: Fig. 1. *Pseudodiaptomus nihonkaiensis* Hirakawa, 1983, Female. a/b. habitus (dorsal/lateral); c. cross section of pediger 2; d/e. urosome (dorsal/lateral); f. genital double-somite (ventral). Fig. 2. a. antennule; b. antenna; c. mandible; d. maxillae; e. maxilla; f. maxilliped; g-k. legs 1–5; l. leg 5 terminal segment. Male. Fig. 3. a. habitus (dorsal); b. leg 5 (anterior); c. right antennule; d. outer lamelliform plate of right leg 5 endopod.

Adapted from Razouls C., de Bovée F., Kouwenberg J. and Desreumaux N., 2005–2020. Diversity and Geographic Distribution of Marine Planktonic Copepods. Sorbonne University, CNRS. Available at <http://copepodes.obs-banyuls.fr/en> [Accessed May 05 2021].

Pseudodiaptomus ornatus Rose, 1957 (Size: female, 2.10–2.32 mm; male, unknown)

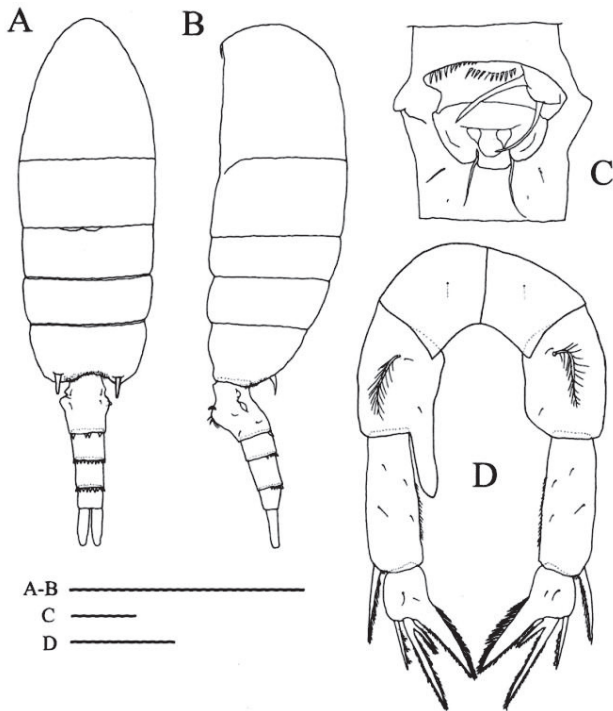


Fig. 1

Pseudodiaptomus ornatus Rose, 1957

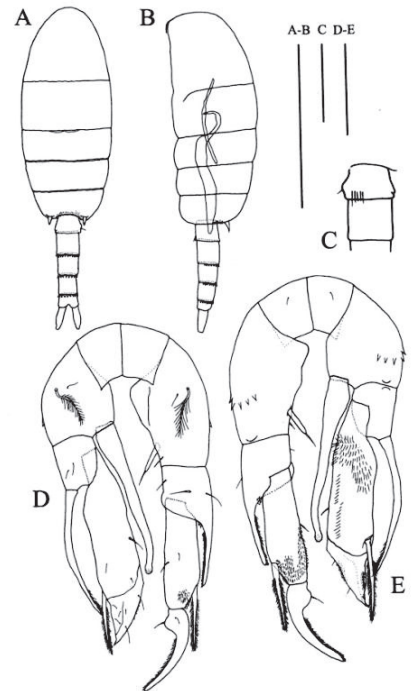
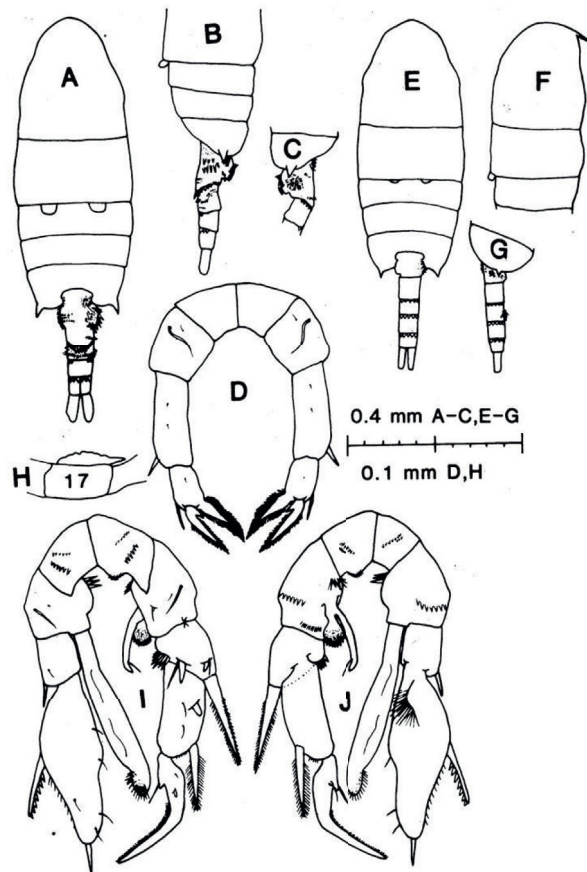


Fig. 2

Walter et al., 2002: Fig. 1. *Pseudodiaptomus ornatus* Rose, 1957, Female. A/B. habitus (dorsal/lateral); C. genital double-somite (ventral); D. leg 5 (posterior). Scale bars: A/B: 1.0 mm; C/D: 0.1 mm. Fig. 2. Male. A/B. habitus (dorsal/lateral); C. urosomites 1–2 (ventral); D. leg 5 (posterior); E. leg 5 (anterior). Scale bars: A/B: 1.0 mm; C: 0.5 mm; D/E: 0.1 mm.

Adapted from Razouls C., de Bovée F., Kouwenberg J. and Desreumaux N., 2005–2020. Diversity and Geographic Distribution of Marine Planktonic Copepods. Sorbonne University, CNRS. Available at <http://copepodes.obs-banyuls.fr/en> [Accessed May 05 2021].

Pseudodiaptomus pacificus Walter, 1986 (Size: female, 0.98–1.25 mm; male, 0.80–0.98 mm)



Pseudodiaptomus pacificus Walter, 1986

Walter, 1986: Fig. 11. *Pseudodiaptomus pacificus* Walter, 1986, Female. A. habitus (dorsal); B. prosome & urosome (lateral); C. pediger 5 to urosomite 2 (lateral); D. leg 5 (posterior). Male. E. habitus (dorsal); F. anterior prosome (lateral); G. pediger 5 and urosome (lateral); H. antennule segment 17 (dorsal); I/J. leg 5 (posterior/anterior).

Adapted from Razouls C., de Bovée F., Kouwenberg J. and Desreumaux N., 2005–2020. Diversity and Geographic Distribution of Marine Planktonic Copepods. Sorbonne University, CNRS. Available at <http://copepodes.obs-banyuls.fr/en> [Accessed May 05 2021].

Pseudodiaptomus poplesia Shen, 1955 (Size: female, 2.00–2.56 mm; male, 1.50–1.80 mm)

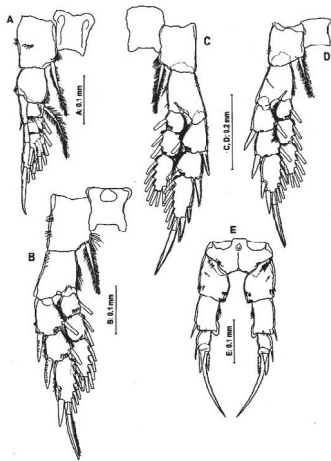


Fig. 5

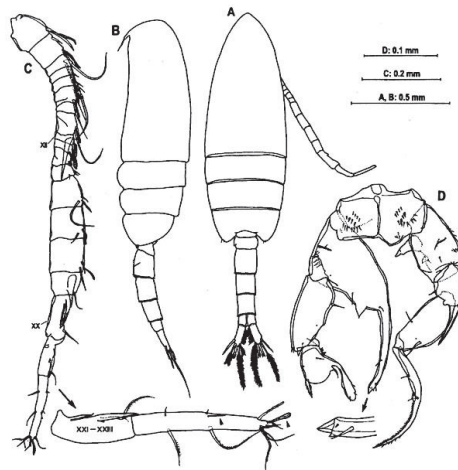
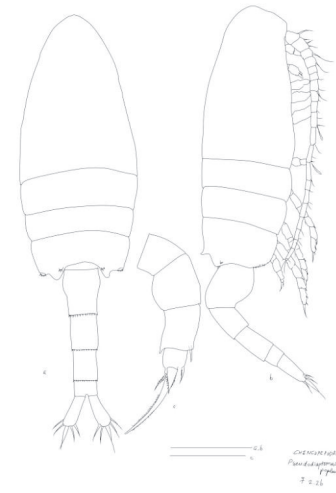


Fig. 6

Pseudodiaptomus poplesia Shen, 1955



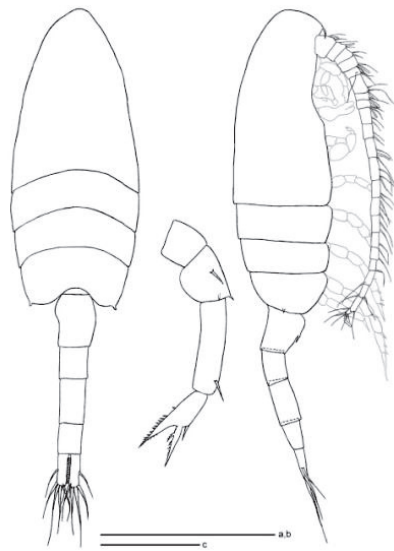
Original

Soh et al., 2016: Fig. 5. *Pseudodiaptomus poplesia* Shen, 1955, Female. A. leg 1; B. leg 2; C. leg 3; D. leg 4; E. leg 5 (anterior). Fig. 6. Male. A/B. habitus (dorsal/lateral); C. right antennule; D. leg 5 (posterior).

Adapted from Razouls C., de Bovée F., Kouwenberg J. and Desreumaux N., 2005–2020. Diversity and Geographic Distribution of Marine Planktonic Copepods. Sorbonne University, CNRS. Available at <http://copepodes.obs-banyuls.fr/en> [Accessed May 06 2021].

Original. *Pseudodiaptomus poplesia* Shen, 1955. Female, 2.26 mm, South China Sea (Guangdong): a/b. habitus (dorsal/lateral); c. right leg 5 (anterior). Scales: a, b = 0.5 mm; c = 0.1 mm.

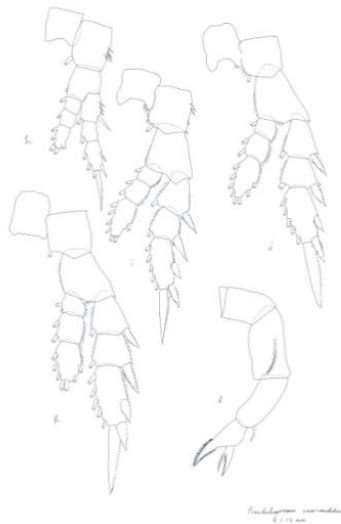
Pseudodiaptomus serricaudatus (T. Scott, 1894) (Size: female, 1.03–1.52 mm; male, 0.96–1.29 mm)



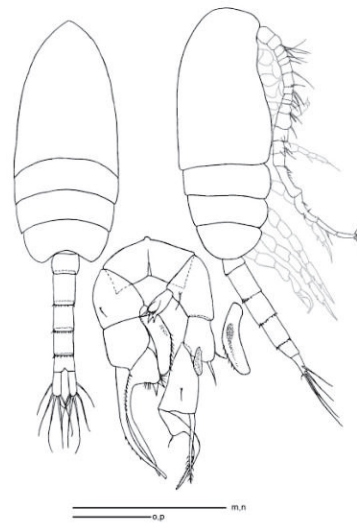
Habitus (Female)



Mouth parts



Legs



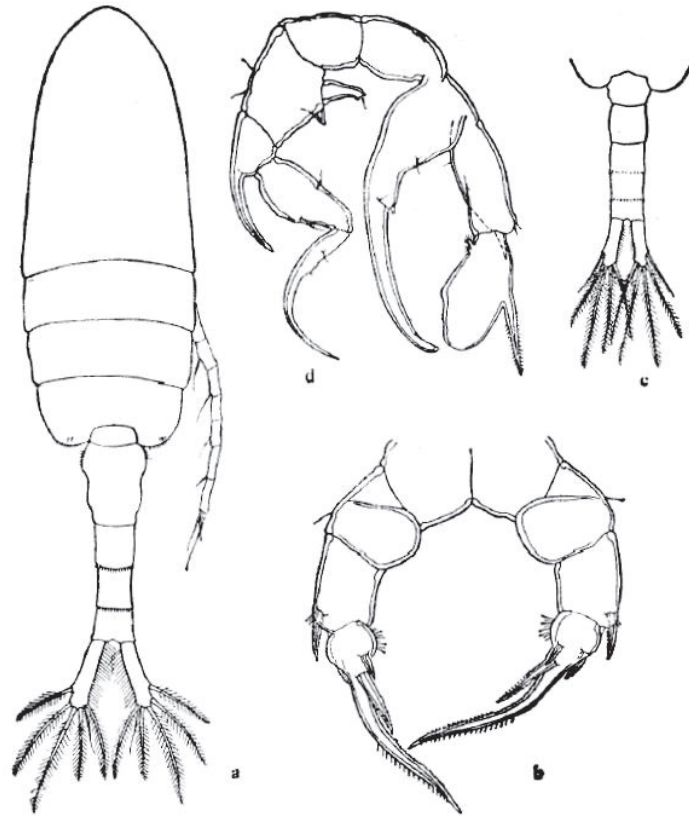
Original (Male)

Pseudodiaptomus serricaudatus (T. Scott, 1894)

Original. *Pseudodiaptomus serricaudatus* (T. Scott, 1894), Female, 1.12 mm. Taiwan Strait (22°49'N,121°11'E): a/b. habitus (dorsal/lateral); Mouth parts. c. right antenna (posterior); d. right mandible (posterior); e. right maxillule (posterior); f. right maxilla (posterior); g. right maxilliped (posterior); Legs. h. right leg 1 (posterior); i. right leg 2 (posterior); j. right leg 3 (posterior); k. right leg 4 (posterior); l. right leg 5 (posterior). Scales: a-b = 0.20 mm; c-g = 0.10 mm; h-l = 0.10 mm.

Original. *Pseudodiaptomus serricaudatus* (T. Scott, 1894), Male, 0.96 mm, Taiwan Strait (22°49'N,121°11'E): m. habitus (dorsal/lateral); o. leg 5 (posterior); p. endopod of leg 5 (anterior). Scales: m, n = 0.4 mm; o, p = 0.1 mm.

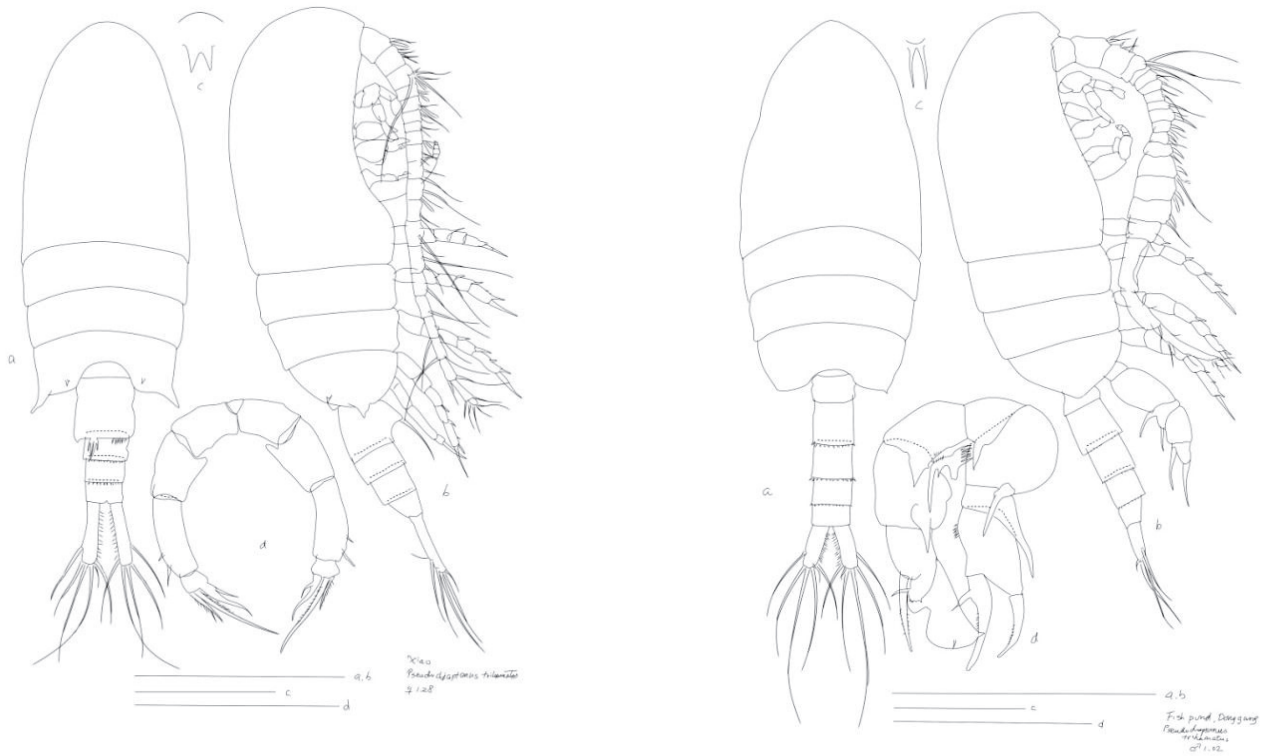
Pseudodiaptomus spatulatus (Shen & Tai 1964) (Size: female, 1.35 mm; male, 1.05 mm)



Pseudodiaptomus spatulatus (Shen & Tai 1964)

Shen & Song, 1979: Fig. 31. Female. a. habitus (dorsal); b. leg 5. Male. c. urosome (dorsal); d. leg 5 (anterior).

Pseudodiaptomus trihamatus Wright, 1937 (Size: female, 1.10–1.32 mm; male, 0.94–1.08 mm)



Female

Pseudodiaptomus trihamatus Wright, 1937

Male

Original. *Pseudodiaptomus trihamatus* wright, 1937, Female, 1.28 mm, Taiwan Strait (22°29'N, 120°26'E): a. habitus (dorsal/lateral); c. rostrum (ventral); d. leg 5 (anterior). Scales: a, b = 0.5 mm; c = 0.2 mm. Male, 1.02 mm, Taiwan Strait (22°29'N, 120°26'E): a. habitus (dorsal/lateral); c. rostrum (ventral); d. leg 5 (posterior). Scales: a, b = 0.5 mm; c = 0.2 mm; d = 0.2 mm.