



Key to the species of Pseudocyclopidae Pseudocyclops occurring in the China Seas

Chang-tai Shih
National Taiwan Ocean University, ctshih@mail.ntou.edu.tw

Qing-Chao Chen
South China Sea Institute of Oceanology

Yang-Chi Lan
Fisheries Research Institute

Shih-Hui Hsiao
National Taipei University of Education

Chi-Yu Weng
Institute of Oceanography, National Taiwan University/Ocean Data Bank of the Ministry of National Science and Technology Council, Taiwan

Follow this and additional works at: <https://jmstt.ntou.edu.tw/journal>



Part of the [Fresh Water Studies Commons](#), [Marine Biology Commons](#), [Ocean Engineering Commons](#), [Oceanography Commons](#), and the [Other Oceanography and Atmospheric Sciences and Meteorology Commons](#)

Recommended Citation

Shih, Chang-tai; Chen, Qing-Chao; Lan, Yang-Chi; Hsiao, Shih-Hui; and Weng, Chi-Yu (2022) "Key to the species of Pseudocyclopidae Pseudocyclops occurring in the China Seas," *Journal of Marine Science and Technology*: Vol. 30: Iss. 5, Article 68.

DOI: 10.51400/2709-6998.2659

Available at: <https://jmstt.ntou.edu.tw/journal/vol30/iss5/68>

This Review-Taxonomic Index is brought to you for free and open access by Journal of Marine Science and Technology. It has been accepted for inclusion in Journal of Marine Science and Technology by an authorized editor of Journal of Marine Science and Technology.

REVIEW-TAXONOMIC INDEX

Key to the Species of Pseudocyclopidae *Pseudocyclops* Occurring in the China Seas

Chang-tai Shih ^{a,*}, Qing-Chao Chen ^b, Yang-Chi Lan ^c, Shih-Hui Hsiao ^d, Chi-Yu Weng ^e

^a National Taiwan Ocean University, Taiwan

^b South China Sea Institute of Oceanology, China

^c Fisheries Research Institute, Taiwan

^d National Taipei University of Education, Taiwan

^e Institute of Oceanography, National Taiwan University/Ocean Data Bank of the Ministry of National Science and Technology Council, Taiwan

Pseudocyclops lepidotus(2a/3a/f), *xiphophorus*(2b/3b/f)

1a	Female	2
1b	Male	3
2a/1b	Pedigerous somite 5 with lateral cleft. In caudal ramus, second caudal seta from inner side not modifies, forming a normal seta. Leg 5 endopod 3-segmented.....	<i>Pseudocyclops lepidotus</i>
2b	Pedigerous somite 5 without lateral cleft. In caudal ramus, second caudal seta from inner side not modified, forming an oar-shaped structure. Leg 5 endopod 2-segmented	<i>Pseudocyclops xiphophorus</i>
3a/1b	Pedigerous somite 5 with lateral cleft. Right leg 5, endopod with straight and parallel inner and outer margins; distal segment of exopod armed with 3 large and 2 small spines and a feathered seta	<i>Pseudocyclops lepidotus</i>
3b	Pedigerous somite 5 without lateral cleft. Right leg 5, endopod with straight inner margin and outer margin with a middle pointed protrusion; distal segment of exopod armed with 1 large spine, 3 setae, and 1 lobular structure.....	<i>Pseudocyclops xiphophorus</i>

Available online 14 November 2022

* Corresponding author.

E-mail address: ctshih@mail.ntou.edu.tw (C.-t. Shih).



Pseudocyclops lepidotus Barr & Ohtsuka, 1989 (Size: female, 0.90 mm; male, 0.73 mm)

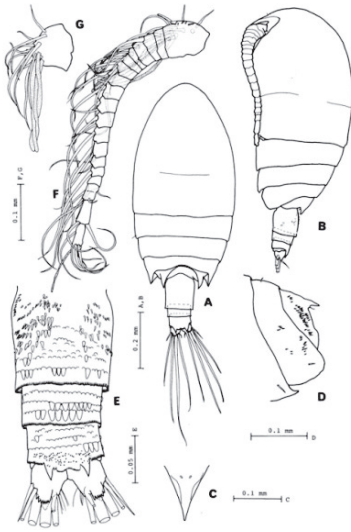


Fig. 1



Fig. 3

Pseudocyclops lepidotus Barr & Ohtsuka, 1989

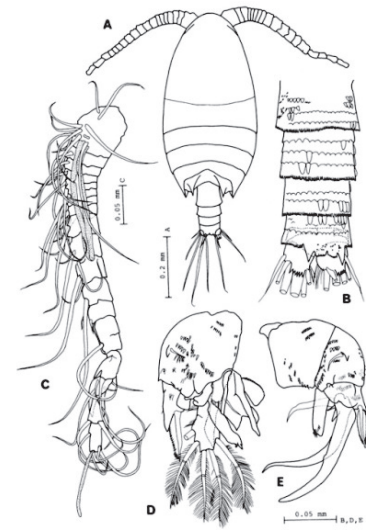


Fig. 4

Barr & Ohtsuka, 1989: fig. 1. *Pseudocyclops lepidotus* Barr & Ohtsuka, 1989, Female. A/B. habitus (dorsal/lateral). C. rostrum (frontal); D. pedigers 4 & 5 (lateral); E. urosome (dorsal); F. antennule; G. antennule, segment 1. fig. 3. Female. A-D. legs 2–5 (anterior). fig. 4. Male. A. habitus (dorsal); B. urosome (dorsal); C. right antennule. D. left leg 5 (posterior); E. right leg 5 (posterior).

Adapted from Razouls C., de Bovée F., Kouwenberg J. and Desreumaux N., 2005–2020. Diversity and Geographic Distribution of Marine Planktonic Copepods. Sorbonne University, CNRS. Available at <http://copepodes.obs-banyuls.fr/en> [Accessed May 26 2021].

Pseudocyclops xiphophorus Wells, 1967 (Size: female, 0.63–0.76 mm; male, 0.63–0.73 mm)

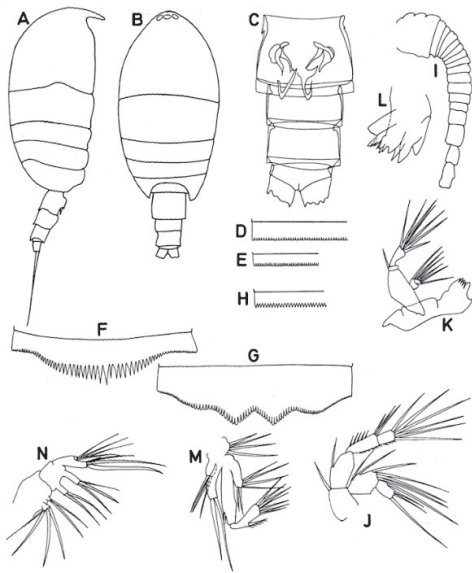


Fig. 2

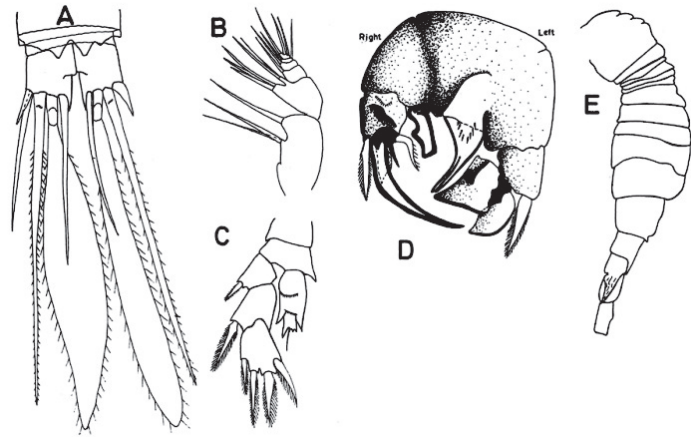


Fig. 3

Pseudocyclops xiphophorus Wells, 1967

Wells, 1967: fig. 2. *Pseudocyclops xiphophorus* Wells, 1967, Female. A/B habitus (lateral/dorsal); C. urosome (ventral); D-H. posterior edge of urosomal segments; D/E urosomites 2 & 3; F/G. urosomite 4 (ventral/dorsal); H. urosomite 1 (male); I. antennule; J. antenna; K. mandible; L. mandibular cutting edge; M. maxillule; N. maxilla. Fig. 3. Female. A. caudal rami (dorsal); B. maxilliped; C. leg 5. Male. D. leg 5 (anterior); E. antennule.

Adapted from Razouls C., de Bovée F., Kouwenberg J. and Desreumaux N., 2005–2020. Diversity and Geographic Distribution of Marine Planktonic Copepods. Sorbonne University, CNRS. Available at <http://copepodes.obs-banyuls.fr/en> [Accessed [May 07 2021]].