



Key to the species of Pontellidae Pontellina occurring in the China Seas

Chang-tai Shih

National Taiwan Ocean University, ctshih@mail.ntou.edu.tw

Qing-Chao Chen

South China Sea Institute of Oceanology

Yang-Chi Lan

Fisheries Research Institute

Shih-Hui Hsiao

National Taipei University of Education

Chi-Yu Weng

Institute of Oceanography, National Taiwan University/Ocean Data Bank of the Ministry of National Science and Technology Council, Taiwan

Follow this and additional works at: <https://jmstt.ntou.edu.tw/journal>



Part of the [Fresh Water Studies Commons](#), [Marine Biology Commons](#), [Ocean Engineering Commons](#), [Oceanography Commons](#), and the [Other Oceanography and Atmospheric Sciences and Meteorology Commons](#)

Recommended Citation

Shih, Chang-tai; Chen, Qing-Chao; Lan, Yang-Chi; Hsiao, Shih-Hui; and Weng, Chi-Yu (2022) "Key to the species of Pontellidae Pontellina occurring in the China Seas," *Journal of Marine Science and Technology*. Vol. 30: Iss. 5, Article 66.

DOI: 10.51400/2709-6998.2657

Available at: <https://jmstt.ntou.edu.tw/journal/vol30/iss5/66>

This Review-Taxonomic Index is brought to you for free and open access by Journal of Marine Science and Technology. It has been accepted for inclusion in Journal of Marine Science and Technology by an authorized editor of Journal of Marine Science and Technology.

REVIEW-TAXONOMIC INDEX

Key to the Species of Pontellidae *Pontellina* Occurring in the China Seas

Chang-tai Shih ^{a,*}, Qing-Chao Chen ^b, Yang-Chi Lan ^c, Shih-Hui Hsiao ^d, Chi-Yu Weng ^e

^a National Taiwan Ocean University, Taiwan

^b South China Sea Institute of Oceanology, China

^c Fisheries Research Institute, Taiwan

^d National Taipei University of Education, Taiwan

^e Institute of Oceanography, National Taiwan University/Ocean Data Bank of the Ministry of National Science and Technology Council, Taiwan

Pontellina morii (2b/3b/f), *plumata* (2a/3a/f)

1a	Female	2
1b	Male	3
2a/1a	Right caudal ramus length 1.25 times width; leg 5 exopod 2 times or more as long as endopod	<i>Pontellina plumata</i>
2b	Right caudal ramus length equal to width; leg 5 exopod 1.5 times or less as long as endopod	<i>Pontellina morii</i>
3a/1b	Posterolateral corner of prosome somewhat angular, apex usually bearing one minute denticles; left leg 5: exopod segment 1 length 3.5 times width; right leg 5: apex of exopod segment 2 without spur-like structure on posterior side	<i>Pontellina plumata</i>
3b	Posterolateral corner of prosome ending in a small spiniform process; left leg 5 exopod segment 1 length 4.5 times width; right leg 5: apex of exopod segment 2 with a prominent triangular spur on posterior side	<i>Pontellina morii</i>

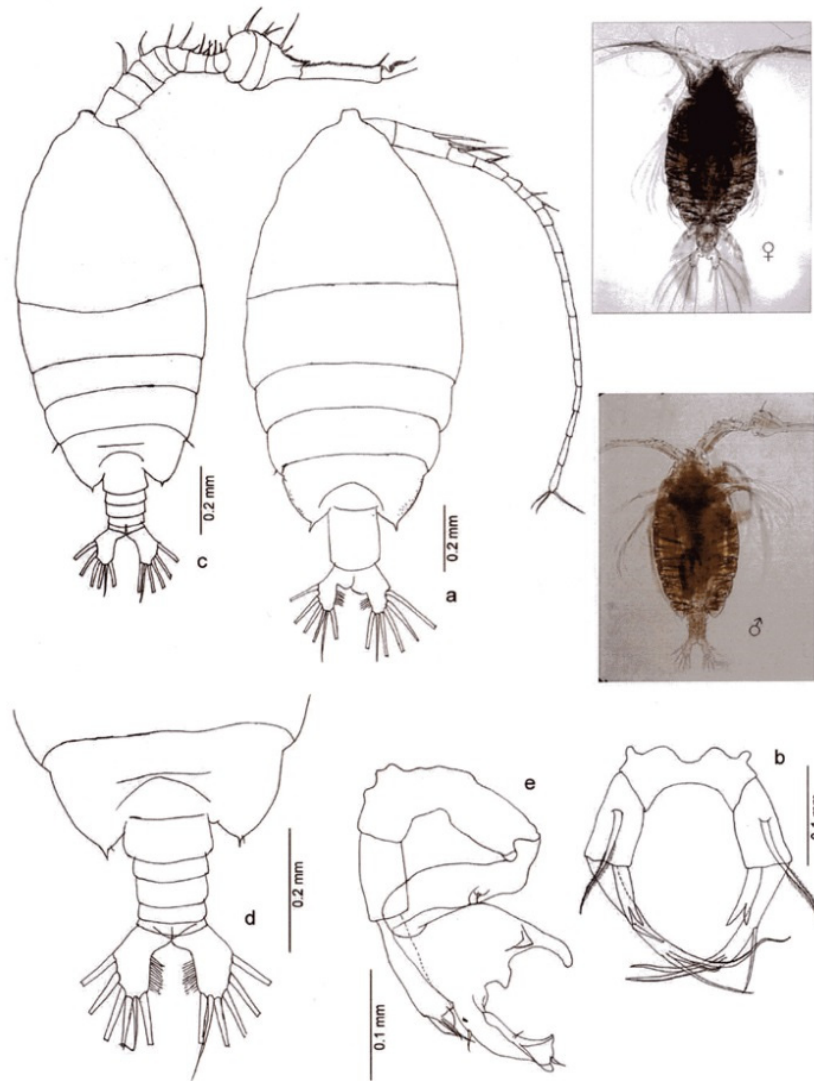
Available online 14 November 2022

* Corresponding author.

E-mail address: ctshih@mail.ntou.edu.tw (C.-t. Shih).



Pontellina morii Fleminger & Hülsemann, 1974 (Size: female, 1.38–1.88 mm; male, 1.26–1.68 mm)

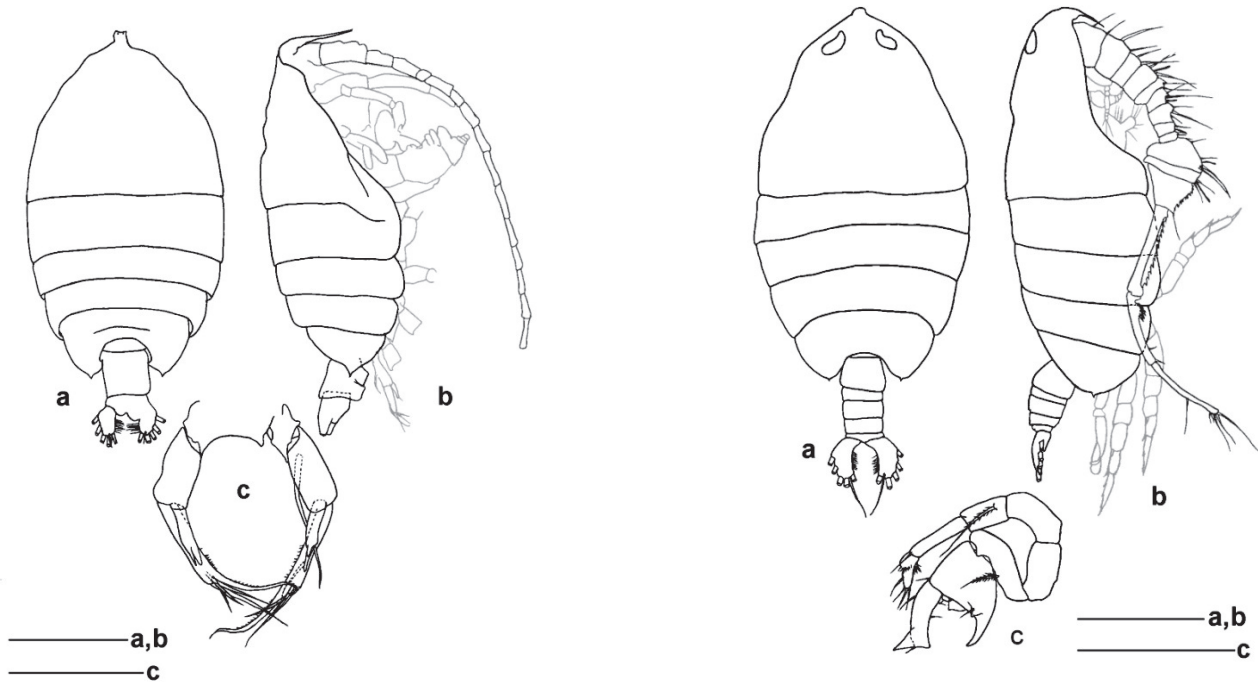


Pontellina morii Fleminger & Hülsemann, 1974

Phukham, 2008: Fig. 58. *Pontellina morii* Fleminger & Hülsemann, 1974, Female (from western Malay Peninsula). a. habitus (dorsal); b. leg 5. Male. c. habitus (dorsal); d. posterior prosome & urosome (dorsal); e. leg 5 (posterior).

Adapted from Razouls C., de Bovée F., Kouwenberg J. and Desreumaux N., 2005–2020. Diversity and Geographic Distribution of Marine Planktonic Copepods. Sorbonne University, CNRS. Available at <http://copepodes.obs-banyuls.fr/en> [Accessed May 24, 2021].

Pontellina morii Fleminger & Hülsemann, 1974



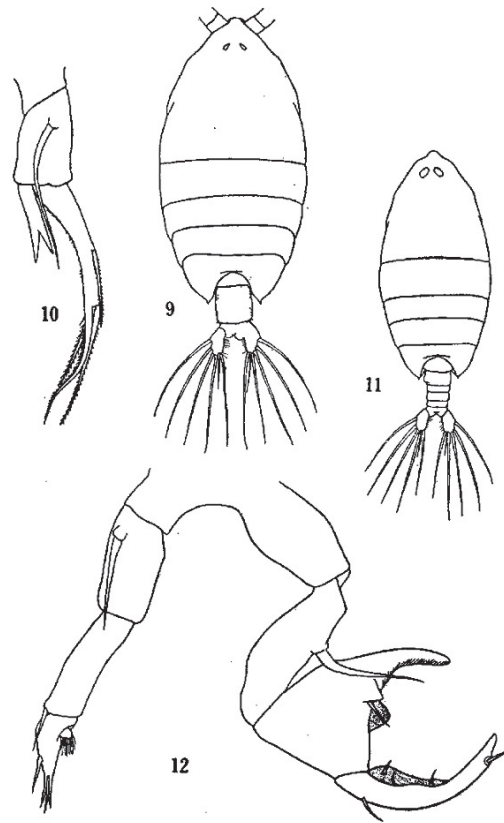
Female

Pontellina morii Fleminger & Hülsemann, 1974

Male

Original. *Pontellina morii* Fleminger & Hülsemann, 1974, Female, 1.68 mm, South China Sea: a/b. habitus (dorsal/lateral); c. leg 5 (anterior). Scales: a, b = 0.5 mm; c = 0.25 mm. Male, 1.46 mm, East of Taiwan (24°18'N, 121°46'E): a/b. habitus (dorsal/lateral); c. leg 5. Scales: a, b = 0.5 mm; c = 0.50 mm.

Pontellina plumata (Dana, 1849) (Size: female, 1.30–1.94 mm; male, 1.26–1.94 mm)

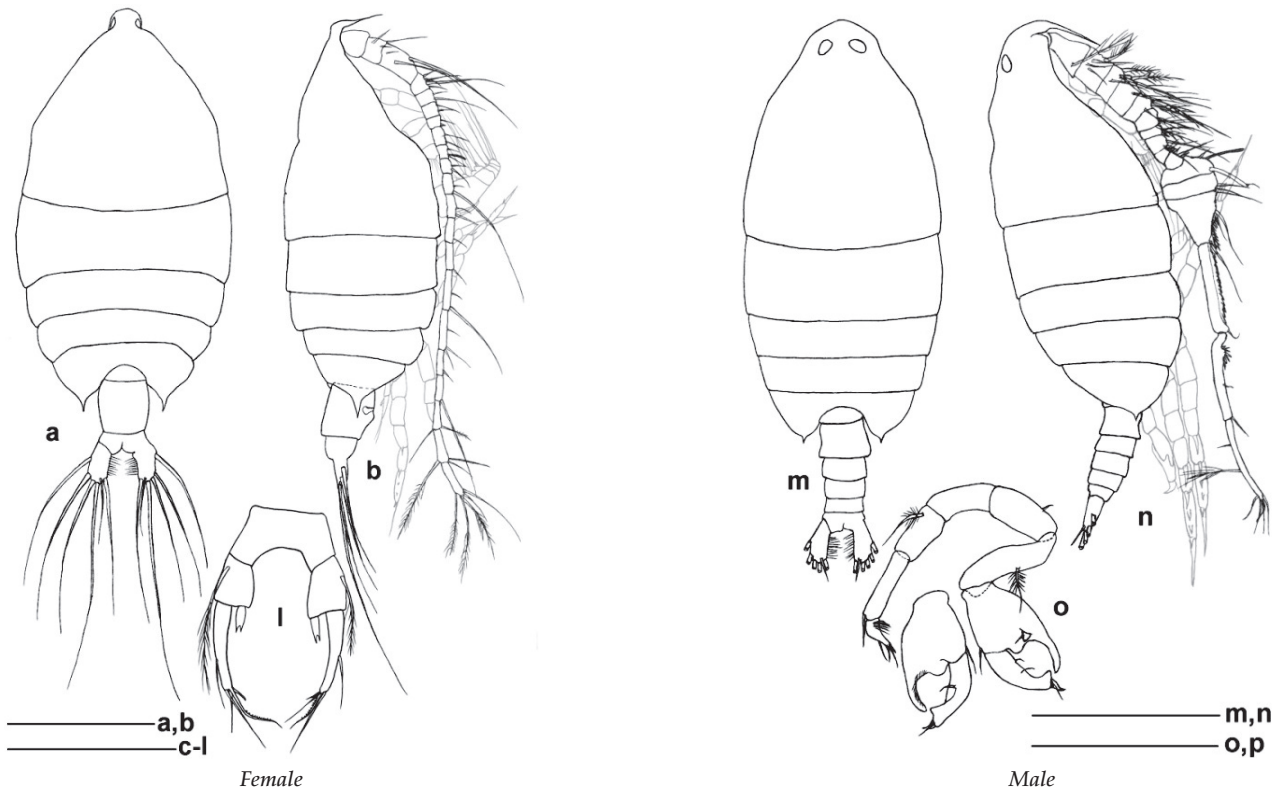


Pontellina plumata (Dana, 1849)

Chen L& Zhang, 1965: pl. 48. *Pontellina plumata* (Dana, 1849), Female (from East China Sea): 9. habitus (dorsal); 10. right leg 5 (posterior). Male: 11. habitus (dorsal); 12. Leg 5 (posterior).

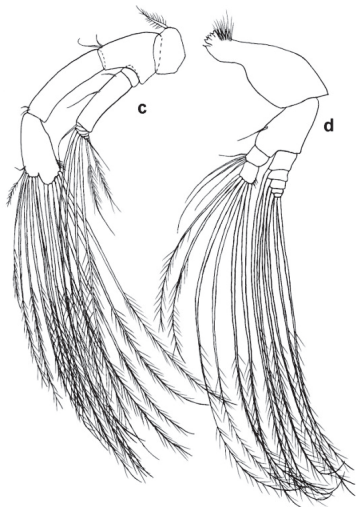
Adapted from Razouls C., de Bovée F., Kouwenberg J. and Desreumaux N., 2005–2020. Diversity and Geographic Distribution of Marine Planktonic Copepods. Sorbonne University, CNRS. Available at <http://copepodes.obs-banyuls.fr/en> [Accessed May 25, 2021].

Pontellina plumata (Dana, 1849)

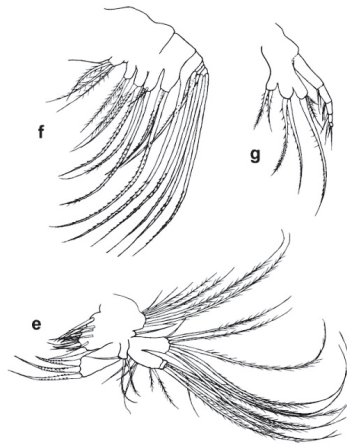


Pontellina plumata (Dana, 1849)

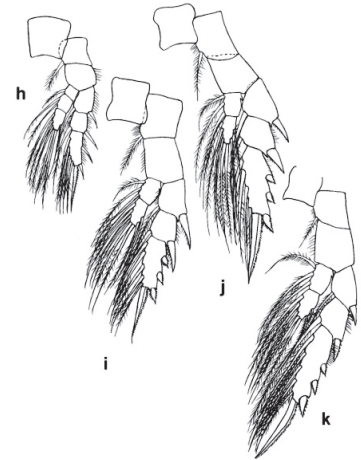
Original. *Pontellina plumata* (Dana, 1849), Female, 1.64 mm, South China Sea: a/b. habitus (dorsal/lateral); l. leg 5 (posterior). Male, 1.46 mm, South China Sea: m/n. habitus (dorsal/lateral); o. leg 5 posterior; p. right leg 5 exopod (anterior). Scales: a, b = 0.5 mm; = 0.25 mm; m, n = 0.5 mm; o, p = 0.25 mm.

Pontellina plumata (Dana, 1849)

Antenna & mandible



Maxillule, maxilla & maxilliped



Legs 1-4

Pontellina plumata (Dana, 1849)

Original. *Pontellina plumata* (Dana, 1849). Female, 1.64 mm, South China Sea: Antenna & mandible, c. right antenna (posterior); d. right mandible (posterior); Maxillule, maxilla & maxilliped. e. right maxillule (posterior); f. right maxilla (posterior); g. right maxilliped (posterior); Legs. h-k. right legs 1–4.