



Key to the species of Pontellidae Labidocera occurring in the China Seas

Chang-tai Shih

National Taiwan Ocean University, ctshih@mail.ntou.edu.tw

Qing-Chao Chen

South China Sea Institute of Oceanology

Yang-Chi Lan

Fisheries Research Institute

Shih-Hui Hsiao

National Taipei University of Education

Chi-Yu Weng

Institute of Oceanography, National Taiwan University/Ocean Data Bank of the Ministry of National Science and Technology Council, Taiwan

Follow this and additional works at: <https://jmstt.ntou.edu.tw/journal>



Part of the [Fresh Water Studies Commons](#), [Marine Biology Commons](#), [Ocean Engineering Commons](#), [Oceanography Commons](#), and the [Other Oceanography and Atmospheric Sciences and Meteorology Commons](#)

Recommended Citation

Shih, Chang-tai; Chen, Qing-Chao; Lan, Yang-Chi; Hsiao, Shih-Hui; and Weng, Chi-Yu (2022) "Key to the species of Pontellidae Labidocera occurring in the China Seas," *Journal of Marine Science and Technology*. Vol. 30: Iss. 5, Article 64.

DOI: 10.51400/2709-6998.2655

Available at: <https://jmstt.ntou.edu.tw/journal/vol30/iss5/64>

This Review-Taxonomic Index is brought to you for free and open access by Journal of Marine Science and Technology. It has been accepted for inclusion in Journal of Marine Science and Technology by an authorized editor of Journal of Marine Science and Technology.

REVIEW-TAXONOMIC INDEX

Key to the Species of Pontellidae *Labidocera* Occurring in the China Seas

Chang-tai Shih ^{a,*}, Qing-Chao Chen ^b, Yang-Chi Lan ^c, Shih-Hui Hsiao ^d, Chi-Yu Weng ^e

^a National Taiwan Ocean University, Taiwan

^b South China Sea Institute of Oceanology, China

^c Fisheries Research Institute, Taiwan

^d National Taipei University of Education, Taiwan

^e Institute of Oceanography, National Taiwan University/Ocean Data Bank of the Ministry of National Science and Technology Council, Taiwan

Labidocera acuta(3a/17a/f), *acutifrons*(3b/17b/f), *bataviae*(13a/27a/f), *churaumi*(f), *detruncata*(15a/28b/f), *euchaeta*(12a/25b/f), *gallensis*(10b/21a/f), *japonica*(7a/24b/f), *kroyeri*(10a/23a/f), *laevidentata*(5a/19a/f), *minuta*(6a/20a/f), *orsinii*(14a/f) (male unknown), *pavo*(15a/28a/f), *pectinata*(8a/23b/f), *rotunda*(9a/24a/f), *sinilobata*(12a/26a/f)

1a	Female	2
1b	Male	16
2a/1a	Cephalosome with mid-frontal process	3
2b	Cephalosome without mid-frontal process	4
3a/2a	Cephalosome with midfrontal process well developed. Genital double-somite longer than wide, with a posteriorly directed process on right distal margin. Caudal rami more or less symmetrical. Leg 5 nearly symmetrical, endopod more than one-third as long as exopod	<i>Labidocera acuta</i>
3b	Cephalosome without lateral hooks, midfrontal process weak. Genital double-somite wider than long, with a short rounded process on mid right margin. Caudal rami asymmetrical, left ramus longer than right. Leg 5 with right leg longer than left, endopod less than one-third as long as exopod	<i>Labidocera acutifrons</i>
4a/2b	Cephalosome with a pair of lateral hooks	5
4b	Cephalosome without lateral hooks	11
5a/3a	Lateral hooks of cephalosome near lens level	<i>Labidocera laevidentata</i>
5b	Lateral hooks of cephalosome far posterior to lens level	6
6a/5b	Posterolateral corners of prosome rounded from dorsal view; urosome without processes	<i>Labidocera minuta</i>
6b	Posterolateral corners of prosome produced into process; urosome with or without processes	7
7a/6b	Urosome without spines	<i>Labidocera japonica</i>
7b	Urosome armed with spines	8
8a/7b	Genital double-somite with a pointed process at lateral distal corner; urosomite 2 without spines or processes	<i>Labidocera pectinata</i>
8b	Genital double-somite otherwise structured; urosomite 2 armed with processes and spines	9
9a/8b	Urosomite 2 with a beak-like process on proximal right margin. Leg 5: endopod with several tooth-like processes on distal half of outer margin	<i>Labidocera rotunda</i>
9b	Urosomite 2 otherwise armed. Leg 5: endopod with smooth outer margin	10
10a/9b	Genital double-somite with spiny process on posterior margin. Urosomite 2 with spiny processes on posterior margin	<i>Labidocera kroyeri</i>
10b	Genital double-somite without process on posterior margin. Urosomite 2 with spiny processes on distal half of right lateral margin	<i>Labidocera gallensis</i>
11a/4b	Inner terminal seta of caudal ramus very long, about three times as long as outer terminal seta. Genita double-somite less than one half as long as urosome	<i>Labidocera euchaeta</i>
11b	Inner terminal seta of caudal ramus not particularly long. Genital double-somite more than three quarters as long as urosome	12

Available online 14 November 2022

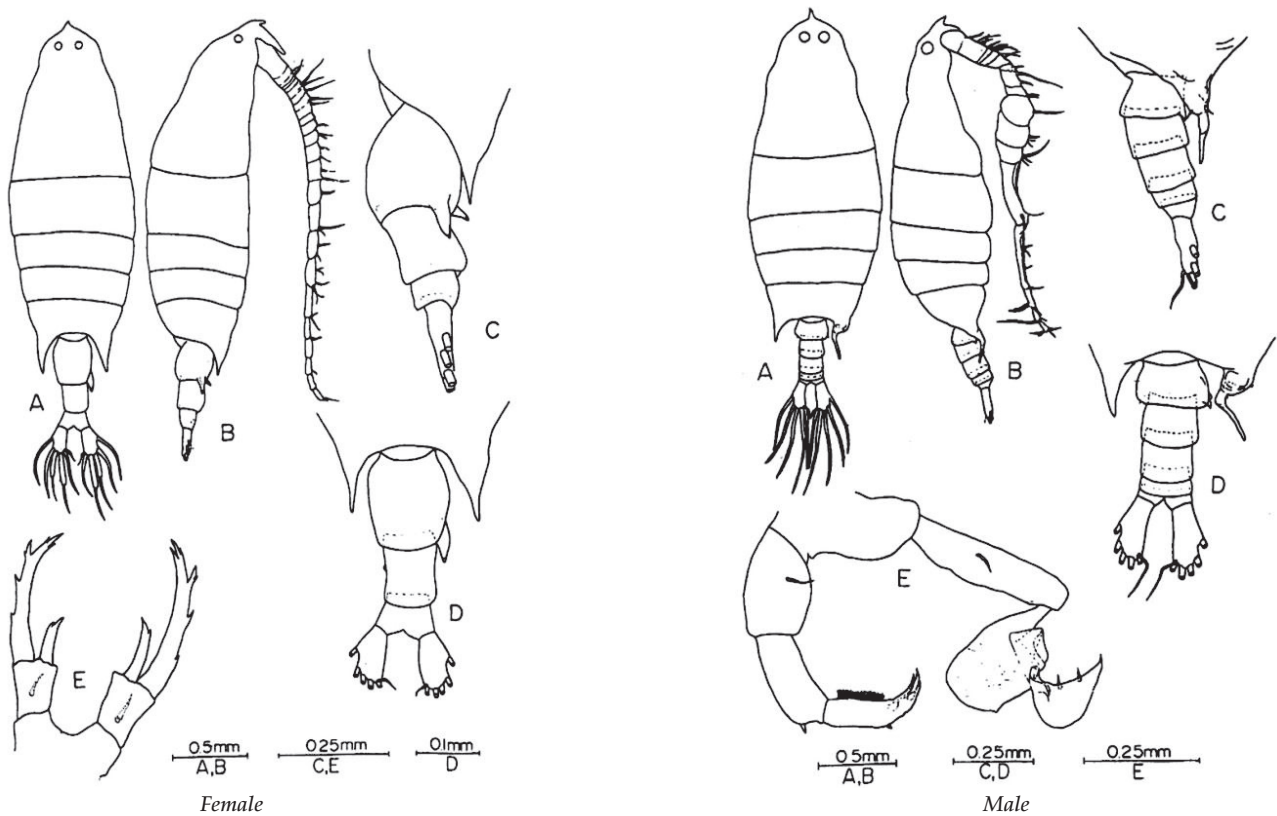
* Corresponding author.

E-mail address: ctshih@mail.ntou.edu.tw (C.-t. Shih).



12a/11b	Leg 5 uniramous	<i>Labidocera sinilobata</i>
12b	Leg 5 biramous	13
13a/12b	Leg 5 asymmetrical, right exopod longer than left exopod, right endopod shorter than left endopod; endopod with a small and weak inner spine.near distal end	<i>Labidocera bataviae</i>
13b	Leg 5 more or less symmetrical; endopod without inner spine	14
14a/13b	Prosoma less than 5 times as long as urosome. Genital double-somite with protuberance on both lateral margins. Leg 5 exopod with 3 minute outer spines	<i>Labidocera orsinii</i>
14b	Prosoma more than 5 times as long as urosome. Genital double-somite with protuberance on one lateral margin. Leg 5 exopod with different armature	15
15a/14b	Genital double-somite with a strong process on right margin; leg 5: exopod more than 5 times as long as endopod, with 3 terminal spines and 2 outer spines	<i>Labidocera pavo</i>
15b	Genital double-somite with a process on left margin; leg 5: exopod less than 3 times as long as endopod, with 1 terminal spine, 3 outer spines and 1 inner spine	<i>Labidocera detruncata</i>
16a/1b	Cephalosome with mid-frontal process	17
16b	Cephalosome without mid-frontal process	8
17a/16a	Mid-frontal process well developed. Posterolateral corners of prosoma asymmetrical, right corner forming an elongated and curved process; genital double-somite with 1 or 2 spines on right posterodistal margin; left leg 5: inner distal corner of basis without process	<i>Labidocera acuta</i>
17b	Mid-frontal process weak. Posterolateral corners of prosoma symmetrical; genital double-somite without spines; left leg 5: basis with an inner distal process, curved and extending beyond exopod segment 1	<i>Labidocera acutifrons</i>
18a/16b	Cephalosome with lateral hooks	19
18b	Cephalosome without lateral hooks	25
19a/18a	Lateral hooks of cephalosome near lens level	<i>Labidocera laevidentata</i>
19b	Lateral hooks of cephalosome far posterior to lens level	20
20a/19b	Right posterolateral corner of prosoma well-developed, blade shaped, extending posteriorly beyond distal margin of urosomite 2; thumb of right leg 5 distally placed, short, with bilobed apex	<i>Labidocera minuta</i>
20b	Right posterolateral corners of prosoma produced into bifid process; thumb of right leg 5 proximally placed	21
21a/20b	Thumb of right leg 5 short, relatively straight, with rounded apex	<i>Labidocera gallensis</i>
21b	Thumb of right leg 5 long and curved, with pointed apex	22
22a/21b	Indentation of the bifid process of right posterolateral corner of prosoma deeply concave, without spines inserted dorsally between the two projections; left leg 5 exopod: outer distal corner of segment 1 not expanded	23
22b	Indentation of the bifid process of right posterolateral corner of prosoma shallow and crescent shaped. Left leg 5: outer distal corner of exopod segment 1 expanded to form a triangular process	24
23a/22a	Lenses large and closed together. Right leg 5: exopod segment 1 with a cone shaped process near distal end of outer margin	<i>Labidocera kroyeri</i>
23b	Lenses small, distance between lenses more than lens diameter. Right leg 5: exopod segment 1 with a bilobular process near proximal end of outer margin	<i>Labidocera pectinata</i>
24a/22b	Prosoma spindle shaped, length 2.5 times width. Right leg 5: exopod segment 1 with a narrow process on proximal outer margin	<i>Labidocera rotunda</i>
24b	Prosoma barrel shaped, length 3 times width. Right leg 5: exopod segment 1 with a broad process with truncated distal end on outer margin	<i>Labidocera japonica</i>
25a/18b	Inner terminal seta of caudal ramus very long, more than twice as long as outer terminal seta. Right leg 5: exopod segment 2 with a terminal spine as long as the segment	<i>Labidocera euhaeta</i>
25b	Inner terminal seta of caudal ramus not particularly long. Right leg 5: exopod segment 2 without a terminal spine	26
26a/25b	Right leg 5: exopod segment 1 with a lobular process on the outer margin distal to thumb	<i>Labidocera sinilobata</i>
26b	Right leg 5: exopod segment 1 without such process distal to thumb	27
27a/26b	Right leg 5: exopod segment 1 with a strong tooth-like spine at base of outer margin proximal to thumb	<i>Labidocera bataviae</i>
27b	Right leg 5: exopod segment 1 without such spine	28
28a/27b	Right leg 5: width of thumb less than one-quarter maximum width of exopod segment 1; exopod segment 2 of left leg 5 with 3 terminal spines	<i>Labidocera pavo</i>
28b	Right leg 5: width of thumb more than 0.4 times as wide as exopod segment 1; exopod segment 2 of left leg 5 with 4 outer spines	<i>Labidocera detruncata</i>

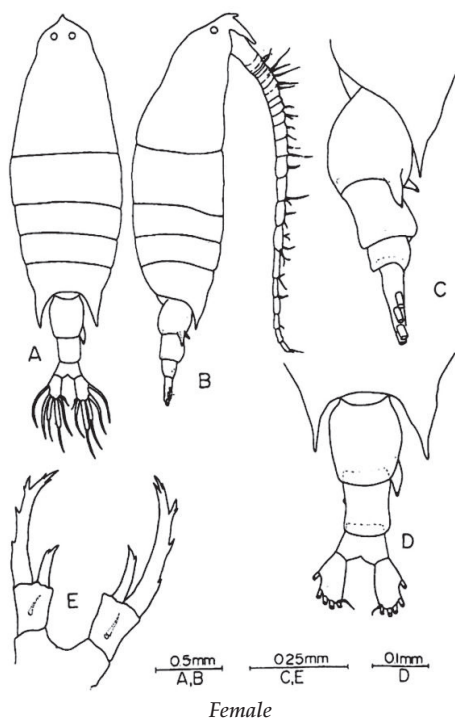
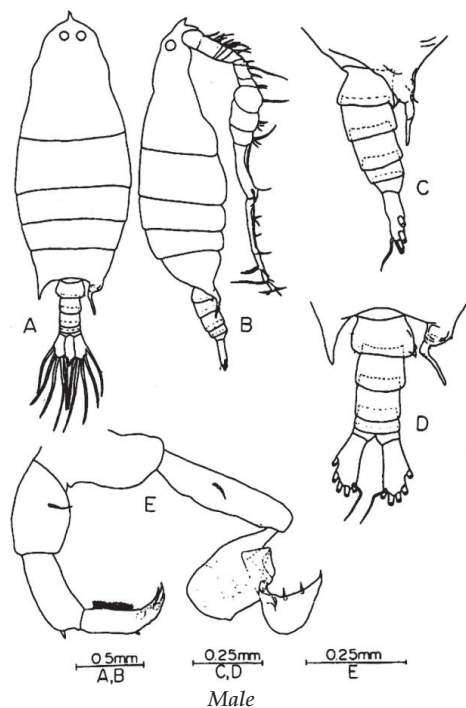
Labidocera acuta (Dana, 1849) (Size: female, 2.30–4.20 mm; male, 2.29–3.32 mm)



Labidocera acuta (Dana, 1849)

Othman & Toda, 2006: Fig. 6. *Labidocera acuta* (Dana, 1849), Female. A/B. habitus (dorsal/lateral); C/D. posterior prosome & urosome (lateral/dorsal); E. leg 5. Fig. 7. Male. A/B. habitus (dorsal/lateral); C/D. posterior prosome & urosome (lateral/dorsal); E. leg 5 (posterior).

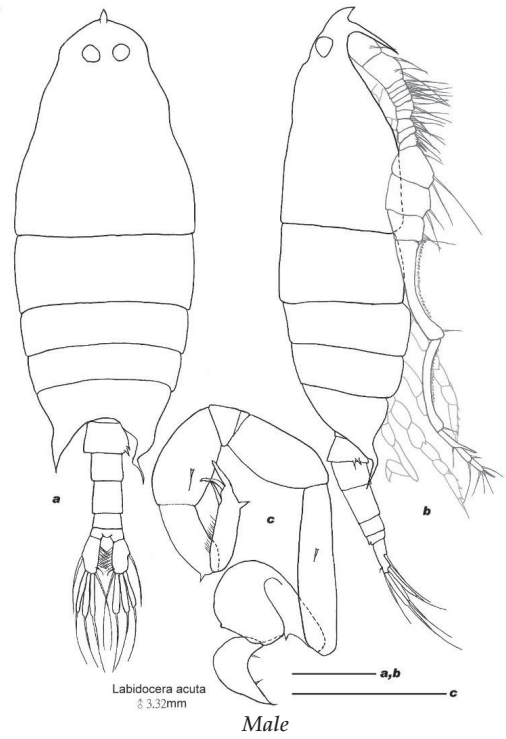
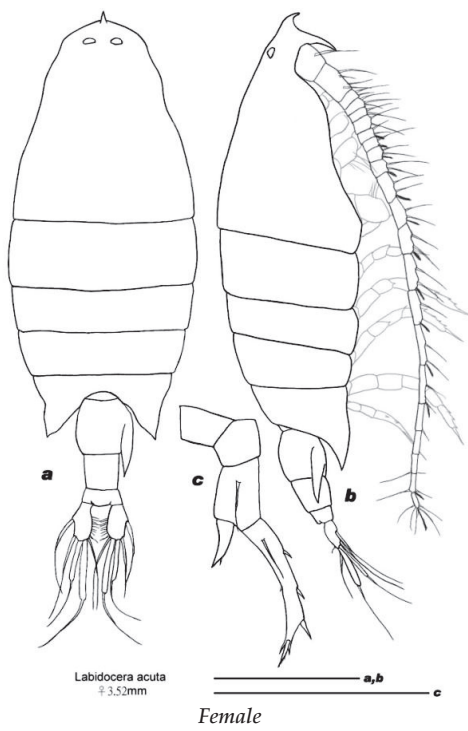
Adapted from Razouls C., de Bovée F., Kouwenberg J. and Desreumaux N., 2005–2020. Diversity and Geographic Distribution of Marine Planktonic Copepods. Sorbonne University, CNRS. Available at <http://copepodes.obs-banyuls.fr/en> [Accessed May 21, 2021].

Labidocera acuta (Dana, 1849)*Labidocera acuta* (Dana, 1849)

Othman & Toda, 2006: Fig. 6. *Labidocera acuta* (Dana, 1849), Female. A/B. habitus (dorsal/lateral); C/D. posterior prosome & urosome (lateral/dorsal); E. leg 5. Fig. 7. Male. A/B. habitus (dorsal/lateral); C/D. posterior prosome & urosome (lateral/dorsal); E. leg 5 (posterior).

Adapted from Razouls C., de Bovée F., Kouwenberg J. and Desreumaux N., 2005–2020. Diversity and Geographic Distribution of Marine Planktonic Copepods. Sorbonne University, CNRS. Available at <http://copepodes.obs-banyuls.fr/en> [Accessed May 21, 2021].

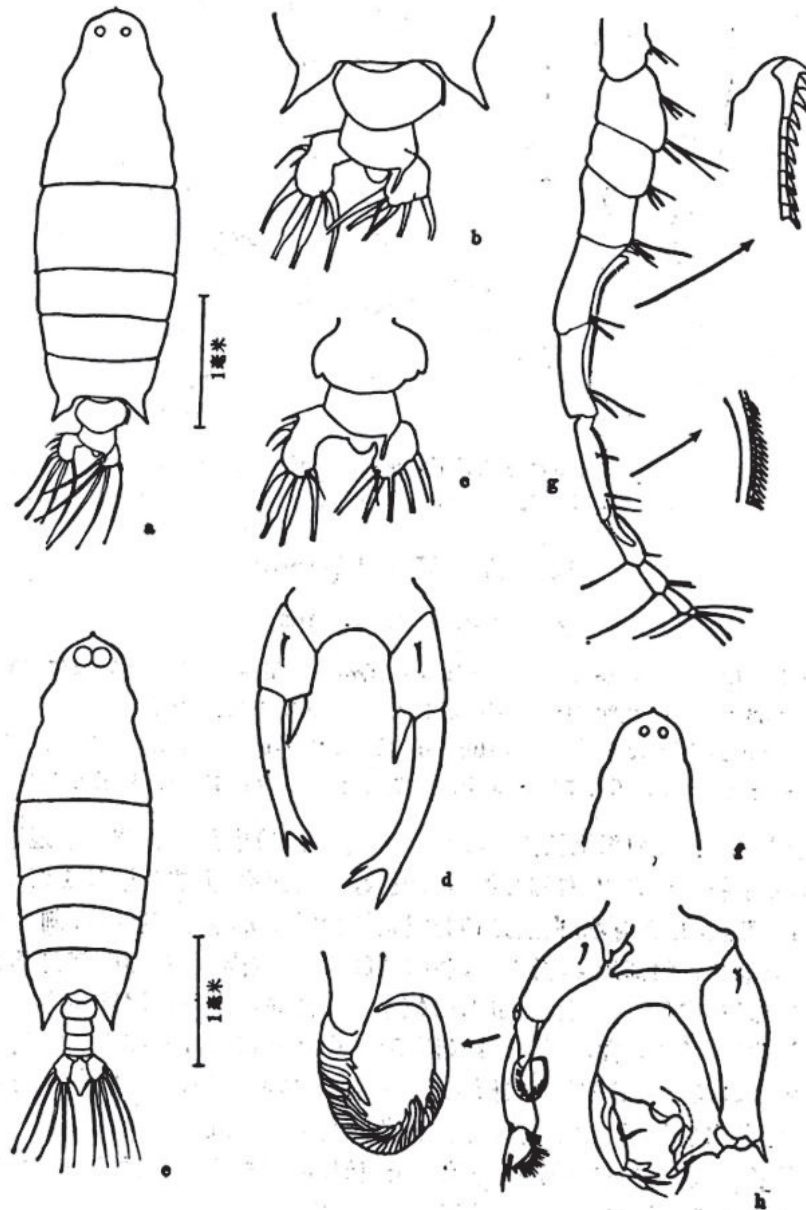
Labidocera acuta (Dana, 1849)



Labidocera acuta (Dana, 1849)

Original. *Labidocera acuta* (Dana, 1849), Female, 3.52 mm, East China Sea (25°30'N, 122°09'E): a/b. habitus (dorsal/lateral); c. left leg 5 (anterior). Scales: a, b = 1.0 mm; c = 0.5 mm. Male, 3.32 mm, East China Sea (25°30'N, 122°09'E): a/b. habitus (dorsal/lateral); c. leg 5 (posterior). Scales: a, b = 0.5 mm; c = 0.3 mm.

Labidocera acutifrons (Dana, 1849) (Size: female, 3.15–4.70 mm; male, 3.28–4.56 mm)

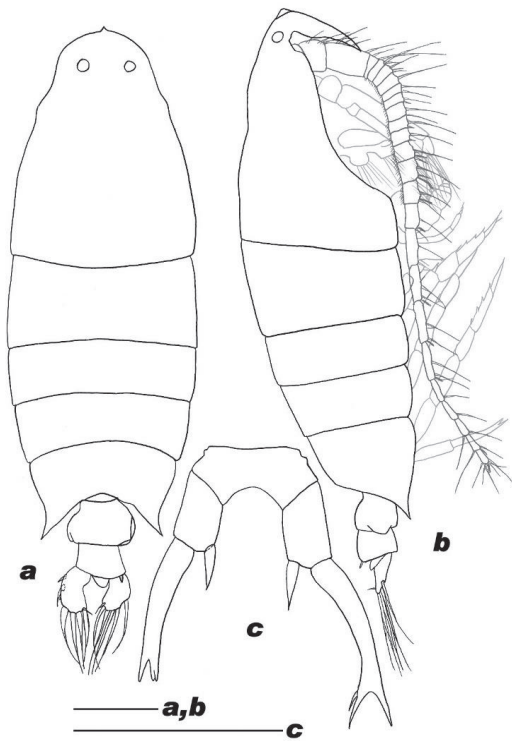


Labidocera acutifrons (Dana, 1849)

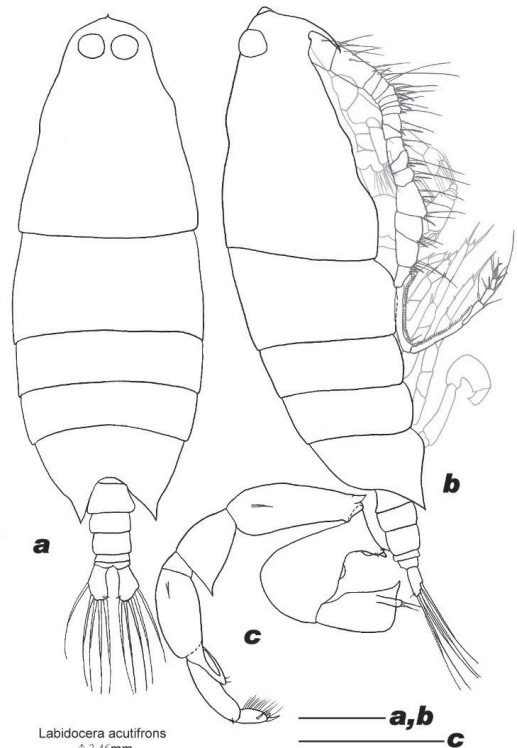
Zheng et al., 1982: fig. 43. *Labidocera acutifrons* (Dana, 1849), Female. a. habitus (dorsal); b. urosome (dorsal); c. urosome (dorsal; another specimen); d. leg 5. Male. e. habitus (dorsal); f. forehead (dorsal); g. antennule; h. leg 5 (posterior).

Adapted from Razouls C., de Bovée F., Kouwenberg J. and Desreumaux N., 2005–2020. Diversity and Geographic Distribution of Marine Planktonic Copepods. Sorbonne University, CNRS. Available at <http://copepodes.obs-banyuls.fr/en> [Accessed May 21, 2021].

Labidocera acutifrons (Dana, 1849)



Female

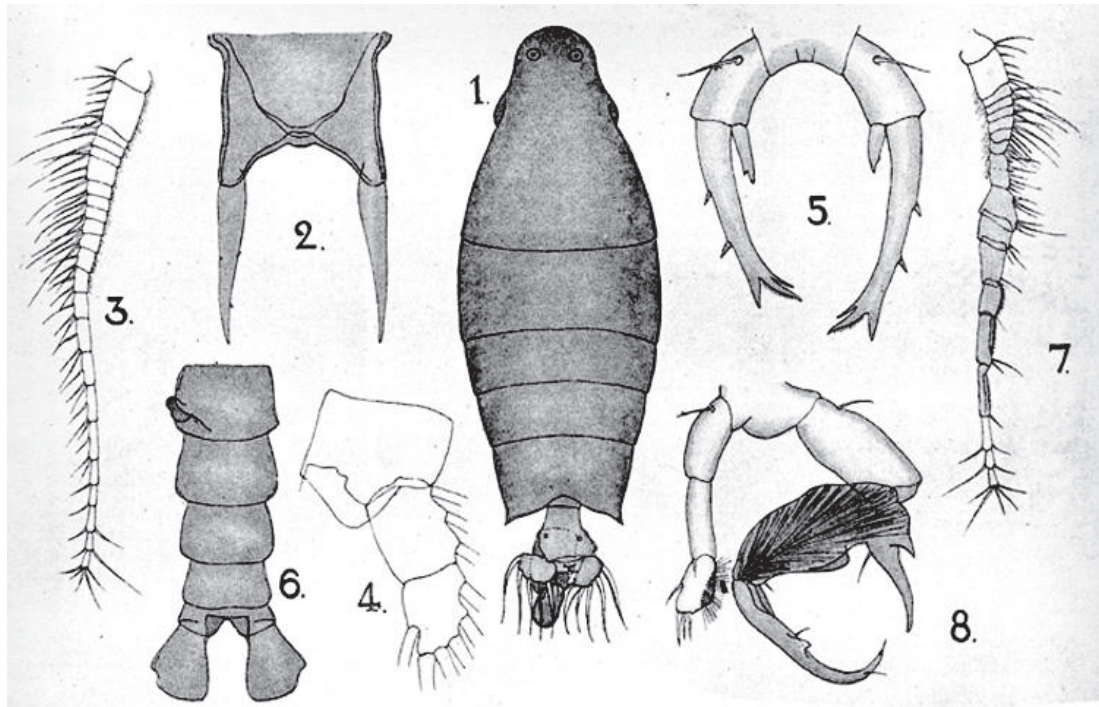


Male

Labidocera acutifrons (Dana, 1849)

Original. *Labidocera acutifrons* (Dana, 1849), Female, 3.48 mm, South China Sea: a/b. habitus (dorsal/lateral); c. leg 5 (posterior). Scales: 0.5 mm. Male, 3.46 mm, South China Sea: a/b. habitus (dorsal/lateral); c. leg 5 (posterior). Scales: 0.5 mm.

Labidocera bataviae A. Scott, 1906 (Size: female, 1.96–2.38 mm; male, 1.70–2.00 mm)



Labidocera bataviae A. Scott, 1906

Scott, A. 1909: pl. 50. *Labidocera bataviae* A. Scott, 1906, Female. 1. habitus (dorsal); 2. rostrum; 3. antennule; 4. leg 1 basis & endopod; 5. leg 5. Male. 6. urosome (dorsal); 7. right antennule; 8. leg 5 (posterior).

Adapted from Razouls C., de Bovée F., Kouwenberg J. and Desreumaux N., 2005–2020. Diversity and Geographic Distribution of Marine Planktonic Copepods. Sorbonne University, CNRS. Available at <http://copepodes.obs-banyuls.fr/en> [Accessed May 22, 2021].

Labidocera churaumi Hirabayashi, 2014 (size: female, 2.23–2.79 mm; male, 1.08–2.53 mm)

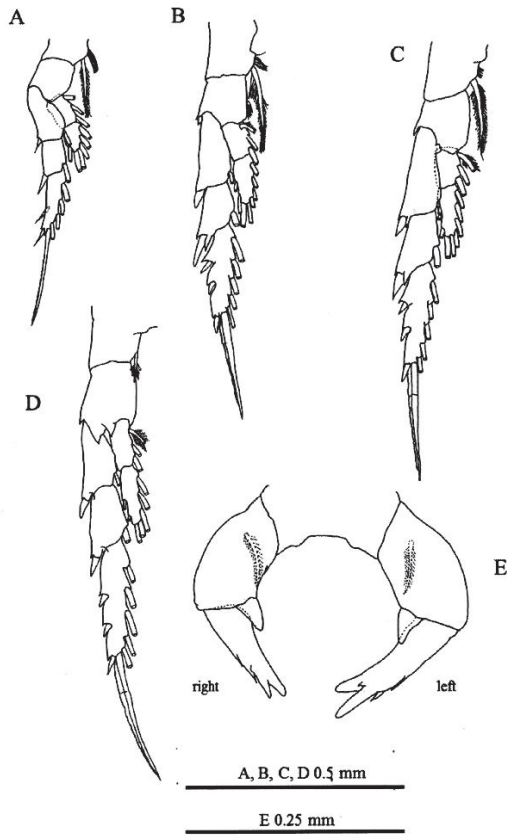


Fig. 3

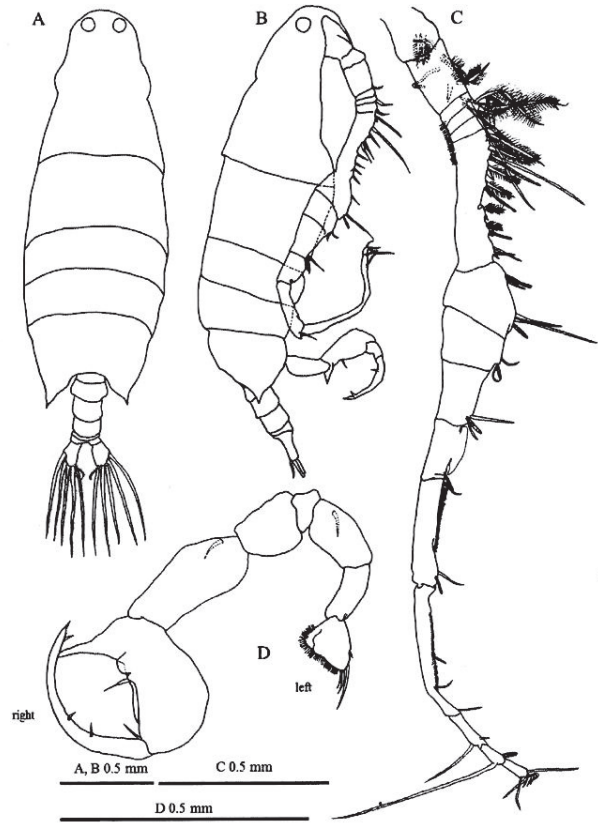
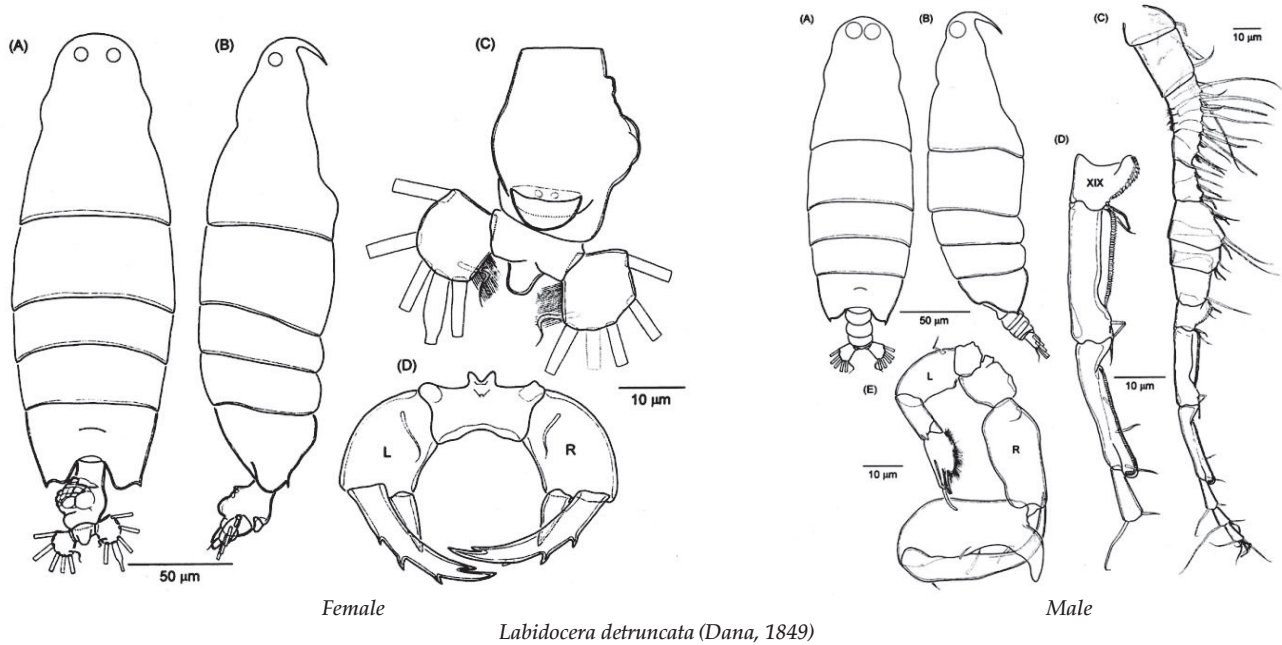


Fig. 4

Labidocera churaumi Hirabayashi, 2014

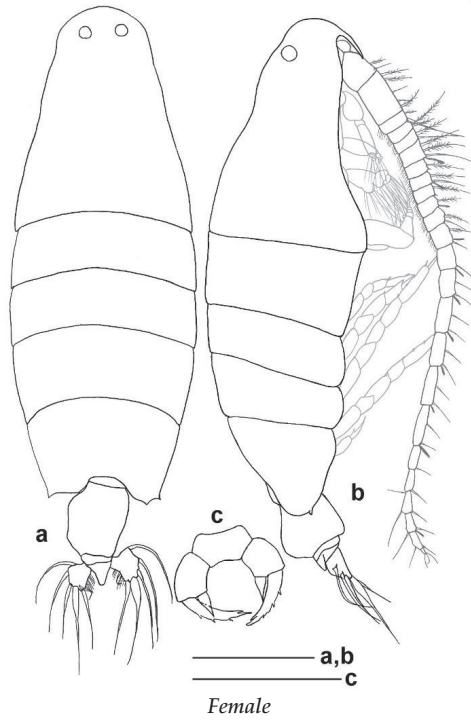
Hirabayashi & Ohtsuka, 2014. Fig. 3. Female: A, leg 1; B, leg 2; C, leg 3; D, leg 4; E, leg 5. Fig. 4. Male: A-B, habitus (dorsal/lateral); C, right antennule; D, leg 5.

Labidocera detruncata (Dana, 1849) (Size: female, 2.25–4.10 mm; male, 2.15–4.00 mm)



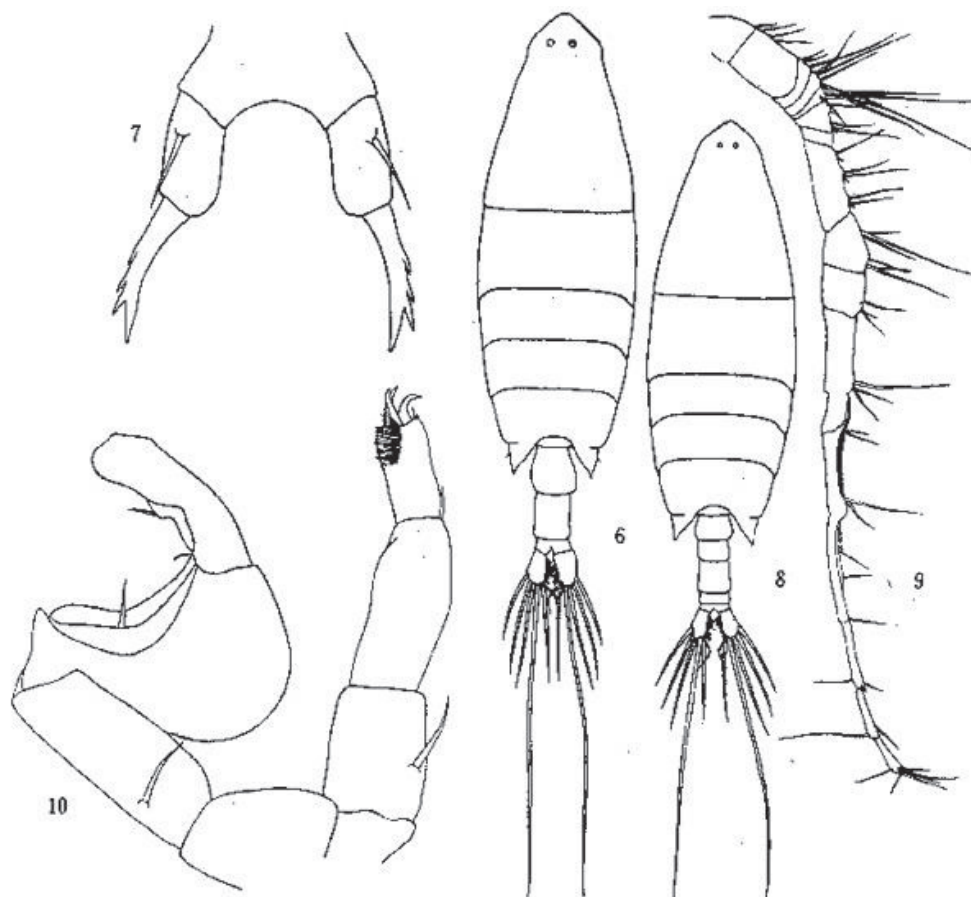
Jeong et al., 2009: Fig. 5. *Labidocera detruncata* (Dana, 1849), Female, A/B. habitus (dorsal/lateral); C. urosome (ventral); D. leg 5 (posterior). Fig. 6. Male. A/B. habitus (dorsal/lateral); C. right antennule; D. right antennule, segments 19–24; E. leg 5 (posterior).

Adapted from Razouls C., de Bovée F., Kouwenberg J. and Desreumaux N., 2005–2020. Diversity and Geographic Distribution of Marine Planktonic Copepods. Sorbonne University, CNRS. Available at <http://copepodes.obs-banyuls.fr/en> [Accessed May 21, 2021].

Labidocera detruncata (Dana, 1849)*Labidocera detruncata* (Dana,1849)

Original. *Labidocera detruncata* (Dana, 1849), Female, 2.44 mm, South China Sea (16°41'N, 138°54'E): a/b. habitus (dorsal/lateral); c. leg 5 (posterior). Scales: 0.5 mm. Male, 2.36 mm, South China Sea (18°00'N, 115°30'E): a/b. habitus (dorsal/lateral); c. leg 5 (posterior). Scales: same as for female.

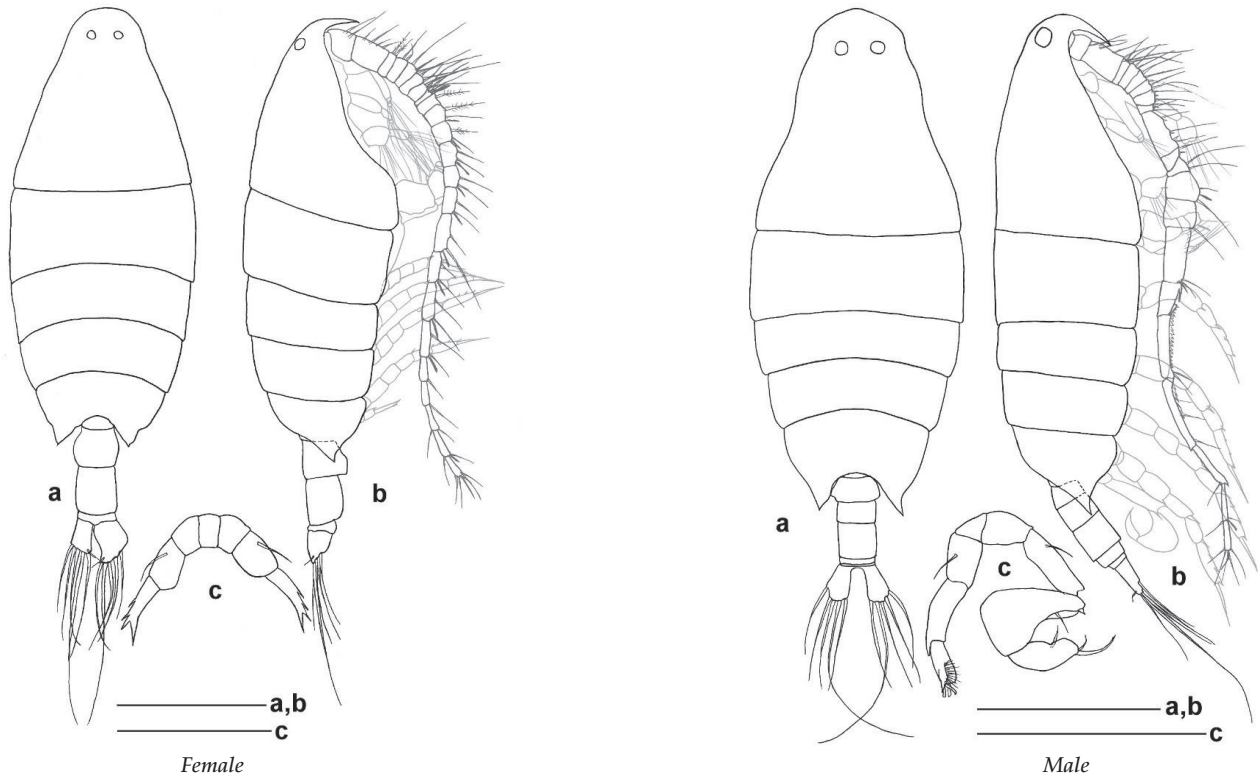
Labidocera euchaeta Giesbrecht, 1889 (Size: female, 1.80–3.15 mm; male, 1.58–2.90 mm)



Labidocera euchaeta Giesbrecht, 1889

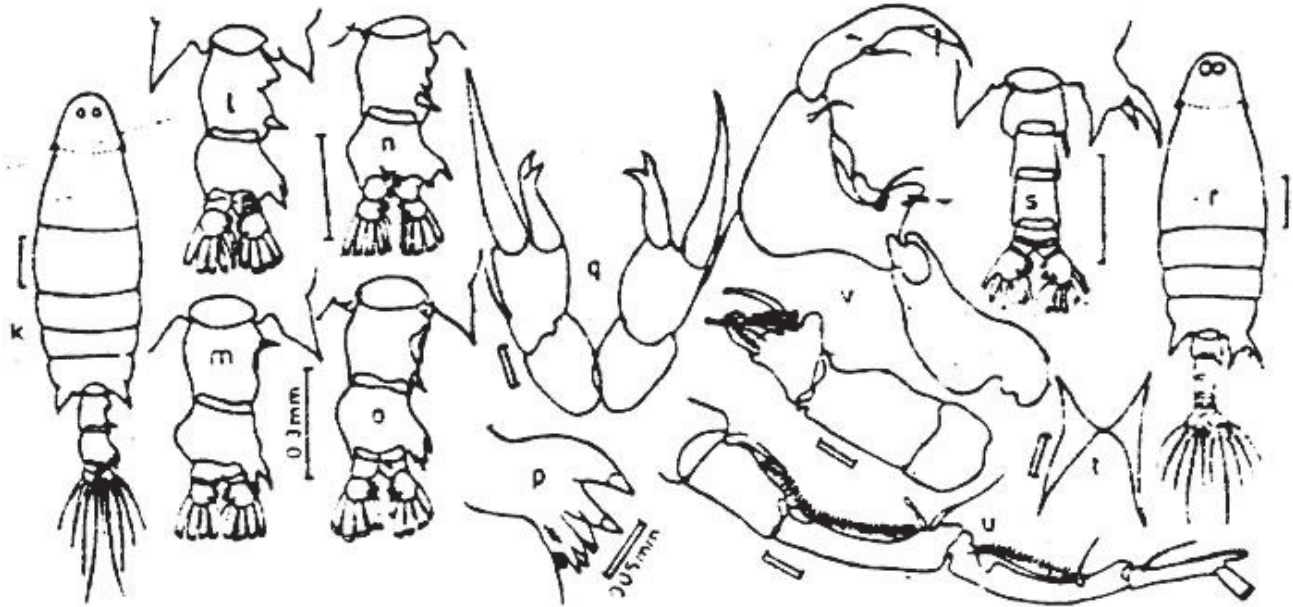
Chen & Zhang, 1965: pl. 40. *Labidocera euchaeta* Giesbrecht, 1889, Female (from East China Sea). 6. habitus (dorsal); 7. leg 5 (posterior). Male. 8. habitus (dorsal); 9. right antennule; 10. leg 5 (posterior).

Adapted from Razouls C., de Bovée F., Kouwenberg J. and Desreumaux N., 2005–2020. Diversity and Geographic Distribution of Marine Planktonic Copepods. Sorbonne University, CNRS. Available at <http://copepodes.obs-banyuls.fr/en> [Accessed May 22, 2021].

Labidocera euchaeta Giesbrecht, 1889*Labidocera euchaeta* Giesbrecht, 1889

Original. *Labidocera euchaeta* Giesbrecht, 1889, Female, 1.86 mm, South China Sea (6°47'N, 112°43'E): a/b. habitus (dorsal/lateral); c. leg 5. (posterior). Scales: a, b = 0.5 mm; c = 0.25 mm. Male, 1.70 mm, Taiwan Strait (Danshui River estuary, 22°49'N, 120°12'E): a/b. habitus (dorsal/lateral); c. rostrum (frontal); d. leg 5 (posterior). Scales: a, b = 1 mm; c = 0.25 mm.

Labidocera gallensis Thompson & Scott, 1903 (Size: female, 1.80–2.85 mm; male, 1.67–2.45 mm)

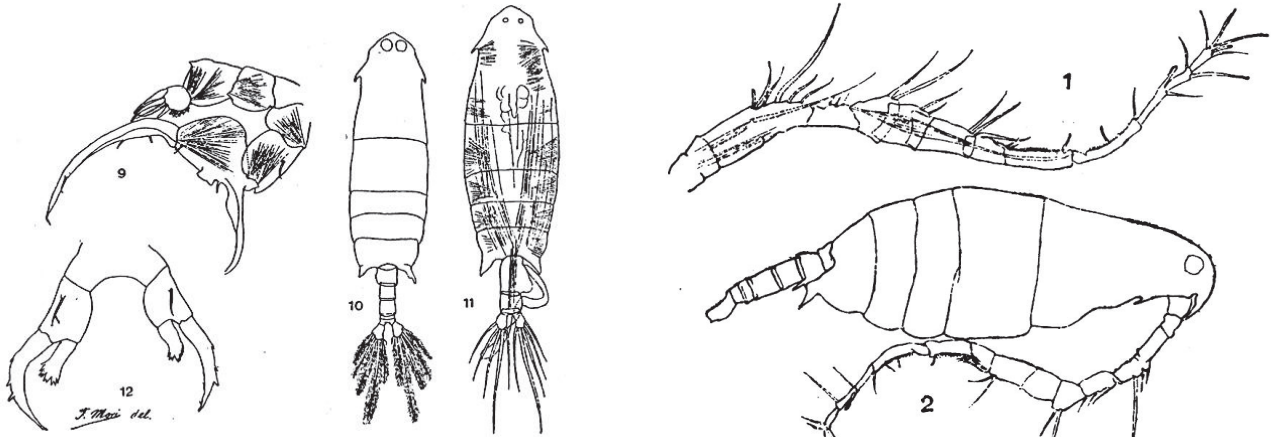


Labidocera gallensis Thompson & Scott, 1903

Silas & Pillai, 1973: Fig. 18. *Labidocera gallensis* Thompson & Scott, 1903, Female. k. habitus (dorsal); l. urosome (dorsal); m-o. urosome (dorsal, from variants); p. mandible masticatory edge; q. leg 5. Male. r. habitus (dorsal); s. urosome (dorsal); t. rostrum (anterior); u. right antennule (geniculate part); v. leg 5 (anterior).

Adapted from Razouls C., de Bovée F., Kouwenberg J. and Desreumaux N., 2005–2020. Diversity and Geographic Distribution of Marine Planktonic Copepods. Sorbonne University, CNRS. Available at <http://copepodes.obs-banyuls.fr/en> [Accessed September 22, 2020].

Labidocera japonica Mori, 1935 (Size: female, 1.74–2.06 mm; male, 1.47–1.94 mm)



Pl. 43

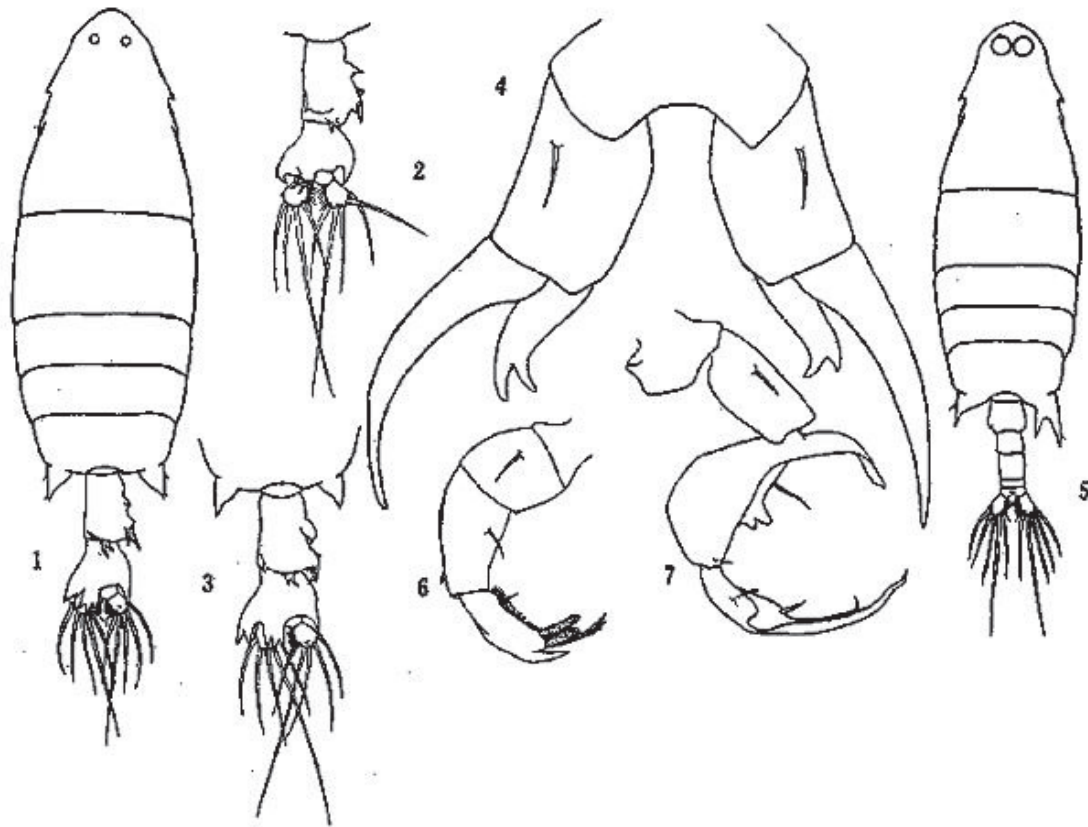
Labidocera japonica Mori, 1935

Pl. 44

Mori, 1935: pl. 43. *Labidocera japonica* Mori, 1935, Male. 9. leg 5 (posterior); 10. habitus (dorsal). Female. 11. habitus (dorsal); 12. leg 5. Pl. 44. Male. 1. right antennule; 2. habitus (lateral).

Adapted from Razouls C., de Bovée F., Kouwenberg J. and Desreumaux N., 2005–2020. Diversity and Geographic Distribution of Marine Planktonic Copepods. Sorbonne University, CNRS. Available at <http://copepodes.obs-banyuls.fr/en> [Accessed May 22, 2021].

Labidocera kroyeri (Brady, 1883) (Size: female, 1.90–2.75 mm; male, 1.95–2.36 mm)

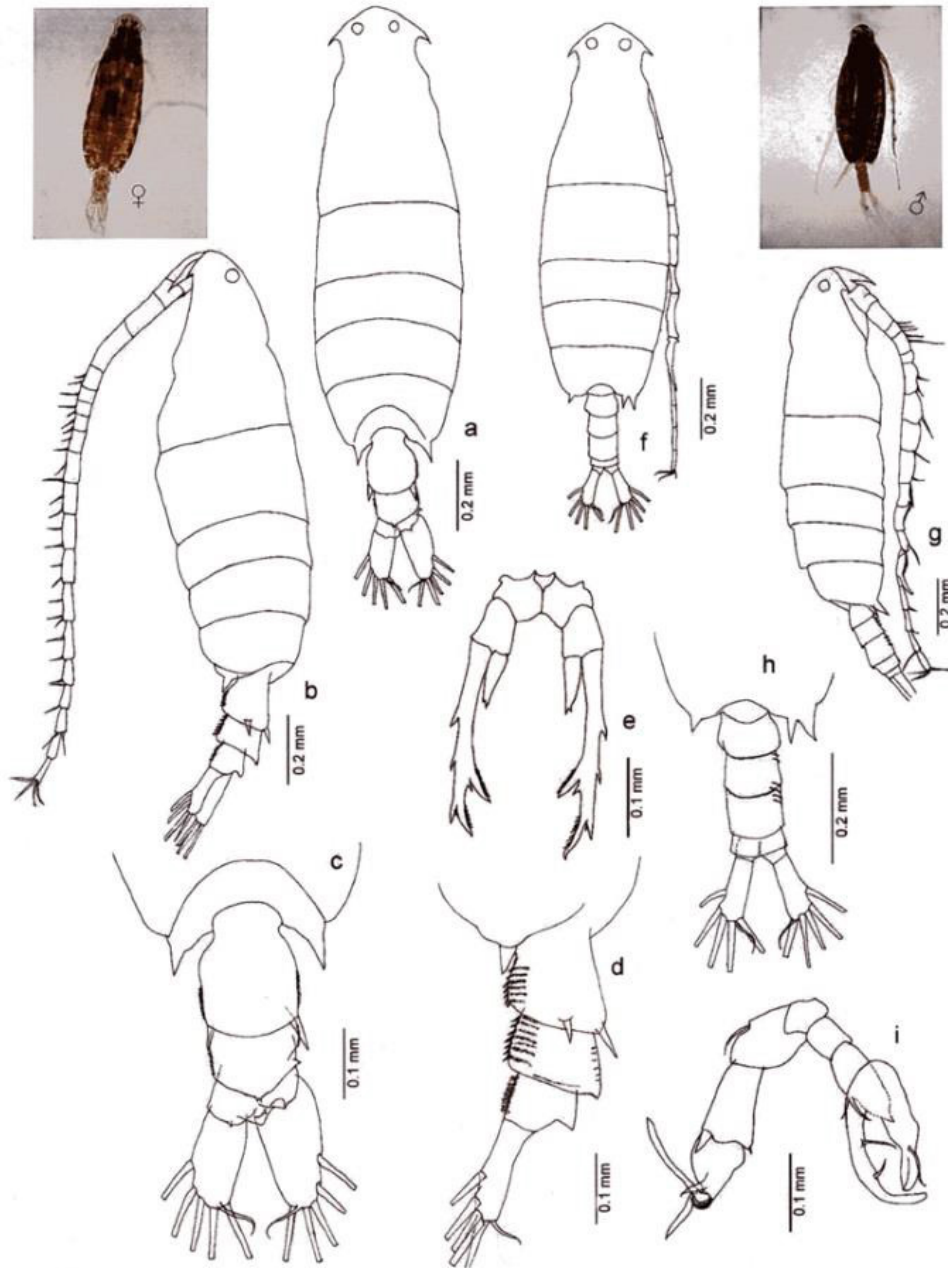


Labidocera kroyeri (Brady, 1883)

Chen & Zhang, 1965: Pl.42. *Labidocera kroyeri* (Brady, 1883), **Female** (from East China Sea): 1. habitus (dorsal); 2. urosome (another specimen, dorsal); 3. urosome (another specimen, dorsal); 4. leg 5 (posterior). **Male**. 5. habitus (dorsal); 6. left leg 5 (posterior); 7. right leg 5 (posterior).

Adapted from Razouls C., de Bovée F., Kouwenberg J. and Desreumaux N., 2005–2020. Diversity and Geographic Distribution of Marine Planktonic Copepods. Sorbonne University, CNRS. Available at <http://copepodes.obs-banyuls.fr/en> [Accessed May 22, 2021].

Labidocera laevidentata (Brady, 1883) (Size: female, 1.60–2.36 mm; male, 1.64–1.72 mm)

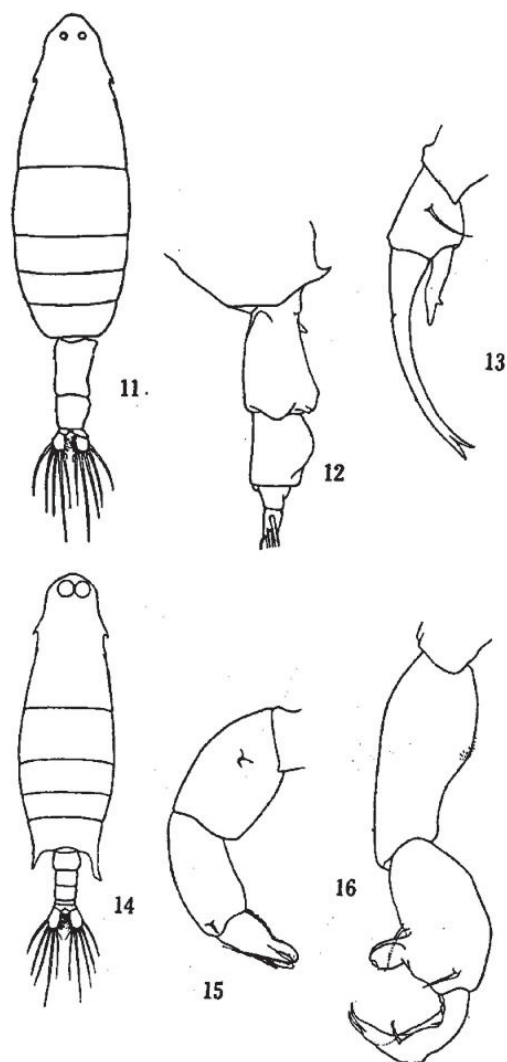


Labidocera laevidentata (Brady, 1883)

Phukham, 2008: Fig. 35. *Labidocera laevidentata* (Brady, 1883), Female. a/b. habitus (dorsal/lateral); c/d. urosome (dorsal/lateral); e. leg 5. Male. f/g. habitus (dorsal/lateral); h. urosome (dorsal); i. leg 5 (posterior).

Adapted from Razouls C., de Bovée F., Kouwenberg J. and Desreumaux N., 2005–2020. Diversity and Geographic Distribution of Marine Planktonic Copepods. Sorbonne University, CNRS. Available at <http://copepodes.obs-banyuls.fr/en> [Accessed May 22, 2021].

Labidocera minuta Giesbrecht, 1889 (Size: female, 1.76–2.30 mm; male, 1.36–1.83 mm)



Labidocera minuta Giesbrecht, 1889

Chen & Zhang, 1965: pl. 41. *Labidocera minuta* Giesbrecht, 1889, Female (from East China Sea). 11. habitus (dorsal); 12. urosome (lateral); 13. left leg 5 (posterior). Male. 14. habitus (dorsal); 15. left leg 5 (posterior); 16. right leg 5 (posterior).

Adapted from Razouls C., de Bovée F., Kouwenberg J. and Desreumaux N., 2005–2020. Diversity and Geographic Distribution of Marine Planktonic Copepods. Sorbonne University, CNRS. Available at <http://copepodes.obs-banyuls.fr/en> [Accessed May 22, 2021].

Labidocera orsinii Giesbrecht, 1889 (Size: female, 2.20 mm; male, unknown)

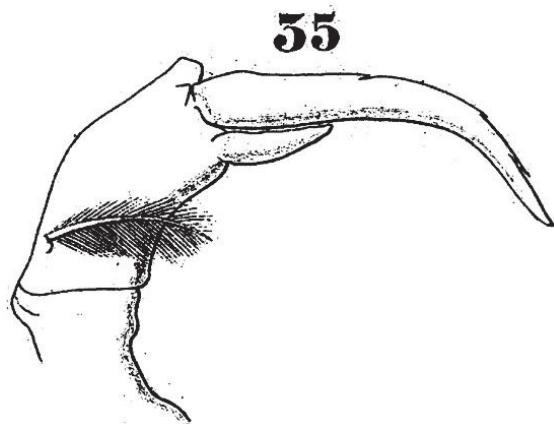


Fig. 35



Fig. 17

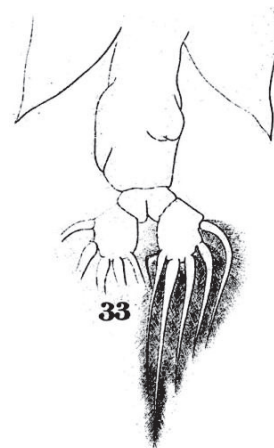


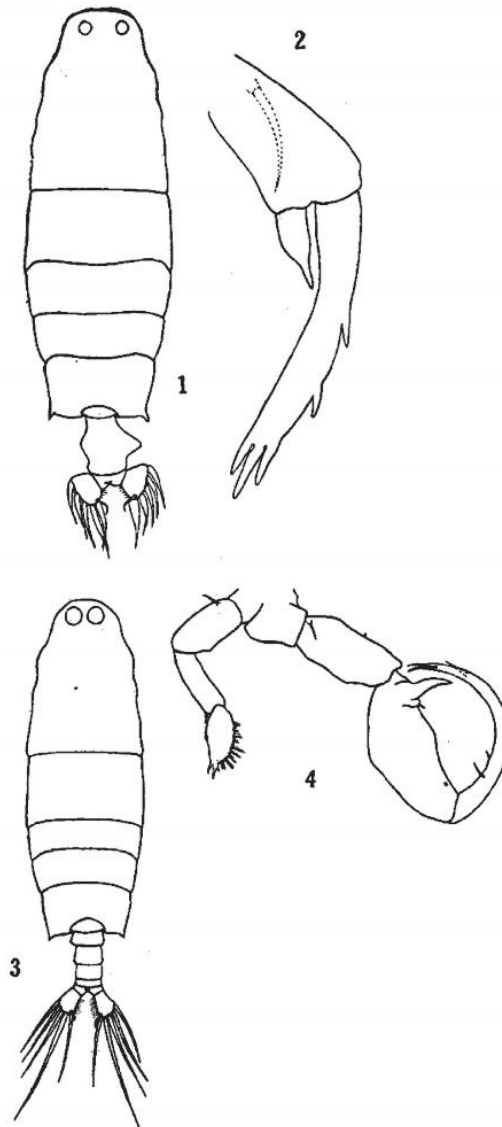
Fig. 33

Labidocera orsinii Giesbrecht, 1889

Giesbrecht, 1892: pl. 25, Fig. 35. *Labidocera orsinii* Giesbrecht, 1889, Female, leg 5. Pl. 41, Fig. 17. Female habitus (dorsal); Fig. 33. pediger 5 and urosome (ventral).

Adapted from Razouls C., de Bovée F., Kouwenberg J. and Desreumaux N., 2005–2020. Diversity and Geographic Distribution of Marine Planktonic Copepods. Sorbonne University, CNRS. Available at <http://copepodes.obs-banyuls.fr/en> [Accessed May 21, 2021].

Labidocera pavo Giesbrecht, 1898 (Size: female, 1.77–2.52 mm; male, 1.50–2.20 mm)

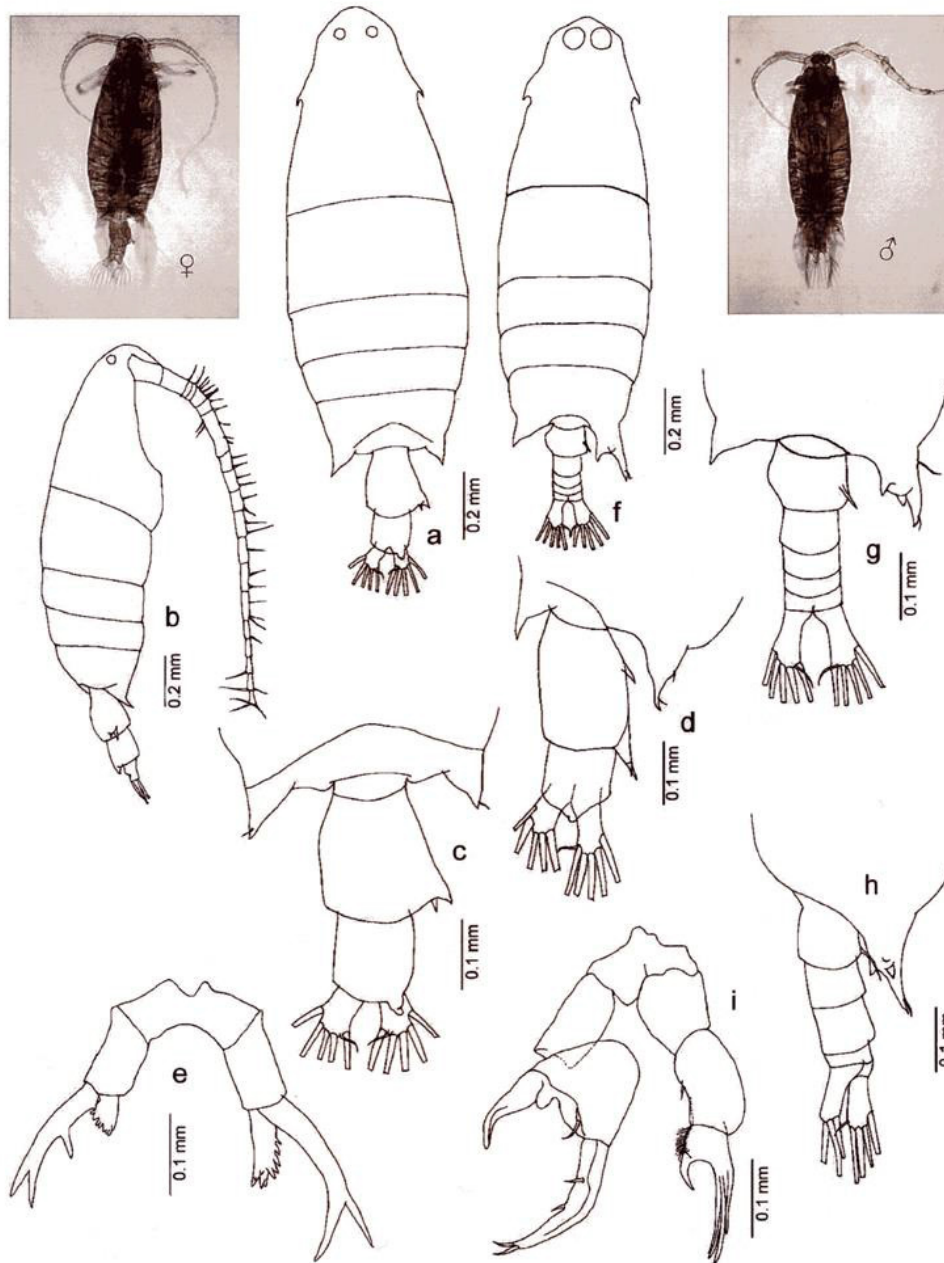


Labidocera pavo Giesbrecht, 1898

Chen & Zhang, 1965: pl. 41. *Labidocera pavo* Giesbrecht, 1898, Female (from East China Sea). 1. habitus (dorsal); 2. left leg 5 (anterior). Male. 3. habitus (dorsal); 4. leg 5 (posterior).

Adapted from Razouls C., de Bovée F., Kouwenberg J. and Desreumaux N., 2005–2020. Diversity and Geographic Distribution of Marine Planktonic Copepods. Sorbonne University, CNRS. Available at <http://copepodes.obs-banyuls.fr/en> [Accessed September 22, 2020].

Labidocera pectinata Thompson & Scott, 1903 (Size: female, 1.84–2.15 mm; male, 1.50–2.03 mm)

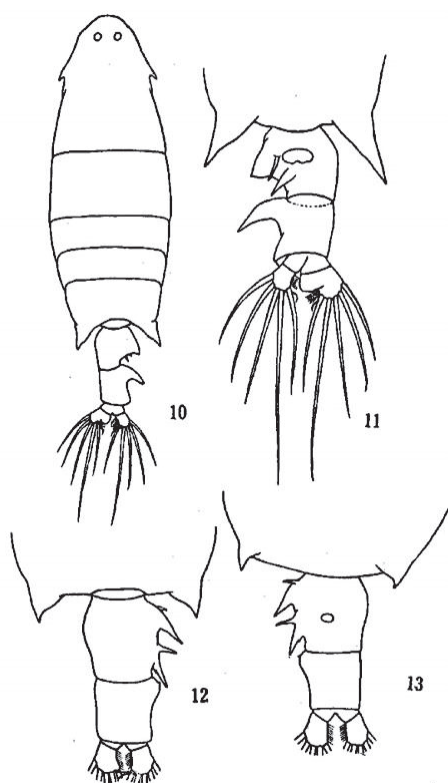


Labidocera pectinata Thompson & Scott, 1903

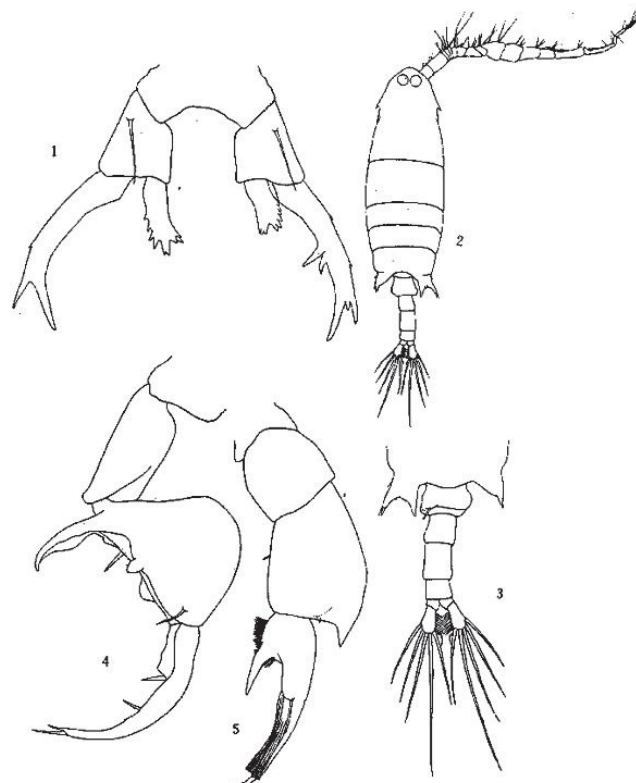
Phukham, 2008: Fig. 38. *Labidocera pectinata* Thompson & Scott, 1903, Female. a/b. habitus (dorsal/lateral); c. urosome (dorsal); d. urosome (same specimen, oblique right lateral); e. leg 5. Male. f. habitus (dorsal); g/h. urosome (dorsal/lateral); i. leg 5 (anterior).

Adapted from Razouls C., de Bovée F., Kouwenberg J. and Desreumaux N., 2005–2020. Diversity and Geographic Distribution of Marine Planktonic Copepods. Sorbonne University, CNRS. Available at <http://copepodes.obs-banyuls.fr/en> [Accessed May 22, 2021].

Labidocera rotunda Mori, 1929 (Size: female, 1.16–2.66 mm; male, 1.16–2.50 mm)



Pl. 39



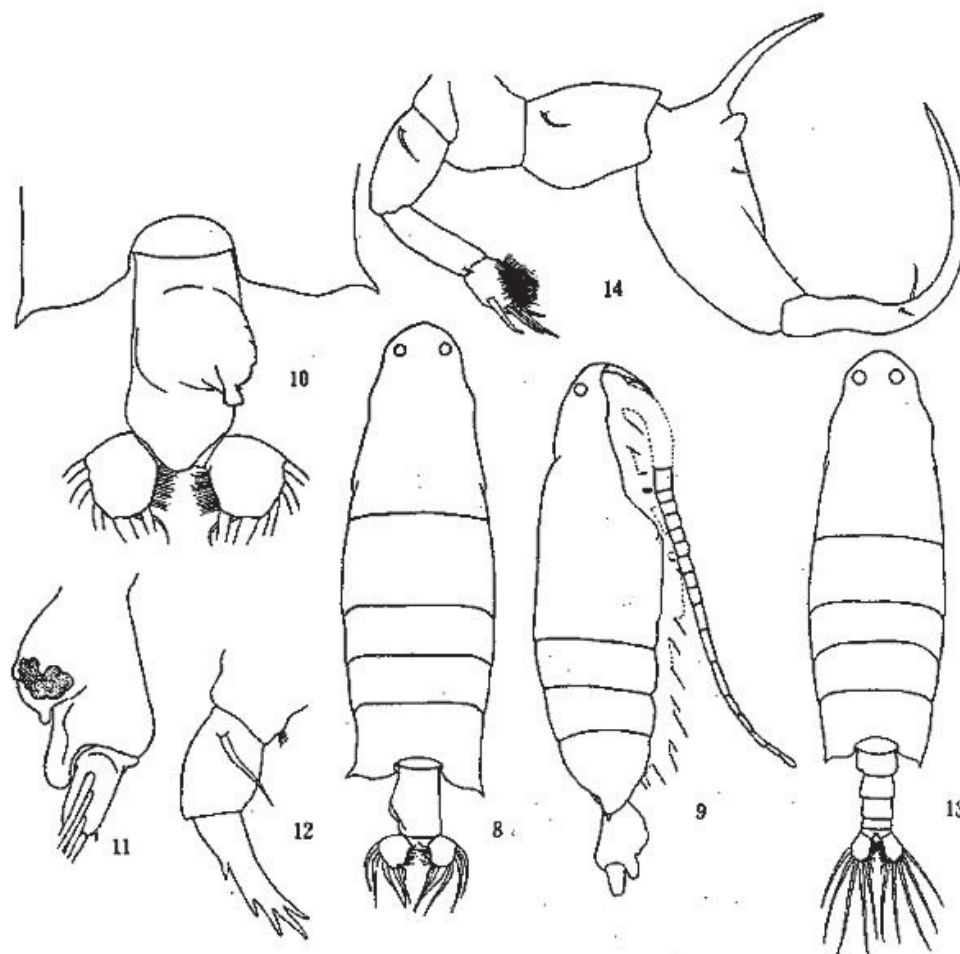
Pl. 40

Labidocera rotunda Mori, 1929

Chen & Zhang, 1965: pl. 39. *Labidocera rotunda* Mori, 1929, Female (from East China Sea). 10. habitus (dorsal); 11. urosome (ventral); 12. urosome (another specimen, dorsal); 13. urosome (another specimen, ventral). Pl. 40. Female. 1. leg 5 (posterior). Male. 2. habitus (dorsal); 3. posterior prosome and urosome (ventral); 4. right leg 5 (anterior); 5. left leg 5 (anterior).

Adapted from Razouls C., de Bovée F., Kouwenberg J. and Desreumaux N., 2005–2020. Diversity and Geographic Distribution of Marine Planktonic Copepods. Sorbonne University, CNRS. Available at <http://copepodes.obs-banyuls.fr/en> [Accessed May 22, 2021].

Labidocera similobata Shen & Lee, 1963 (Size: female, 2.29–2.72 mm; male, 1.94–2.03 mm)



Labidocera similobata Shen & Lee, 1963

Chen & Zhang, 1965: pl. 42. *Labidocera similobata* Shen & Lee, 1963, Female (from East China Sea). 8/9. habitus (dorsal/lateral); 10. posterior prosome & urosome (ventral); 11. urosome (lateral); 12. left leg 5 (posterior). Male. 13. habitus (dorsal); 14. leg 5 (posterior).

Adapted from Razouls C., de Bovée F., Kouwenberg J. and Desreumaux N., 2005–2020. Diversity and Geographic Distribution of Marine Planktonic Copepods. Sorbonne University, CNRS. Available at <http://copepodes.obs-banyuls.fr/en> [Accessed May 22, 2021].