



Key to the species of Pontellidae Calanopia occurring in the China Seas

Chang-tai Shih
National Taiwan Ocean University, ctshih@mail.ntou.edu.tw

Qing-Chao Chen
South China Sea Institute of Oceanology

Yang-Chi Lan
Fisheries Research Institute

Shih-Hui Hsiao
National Taipei University of Education

Chi-Yu Weng
Institute of Oceanography, National Taiwan University/Ocean Data Bank of the Ministry of National Science and Technology Council, Taiwan

Follow this and additional works at: <https://jmstt.ntou.edu.tw/journal>



Part of the [Fresh Water Studies Commons](#), [Marine Biology Commons](#), [Ocean Engineering Commons](#), [Oceanography Commons](#), and the [Other Oceanography and Atmospheric Sciences and Meteorology Commons](#)

Recommended Citation

Shih, Chang-tai; Chen, Qing-Chao; Lan, Yang-Chi; Hsiao, Shih-Hui; and Weng, Chi-Yu (2022) "Key to the species of Pontellidae Calanopia occurring in the China Seas," *Journal of Marine Science and Technology*: Vol. 30: Iss. 5, Article 63.

DOI: 10.51400/2709-6998.2654

Available at: <https://jmstt.ntou.edu.tw/journal/vol30/iss5/63>

This Review-Taxonomic Index is brought to you for free and open access by Journal of Marine Science and Technology. It has been accepted for inclusion in Journal of Marine Science and Technology by an authorized editor of Journal of Marine Science and Technology.

REVIEW-TAXONOMIC INDEX

Key to the Species of Pontellidae *Calanopia* Occurring in the China Seas

Chang-tai Shih ^{a,*}, Qing-Chao Chen ^b, Yang-Chi Lan ^c, Shih-Hui Hsiao ^d, Chi-Yu Weng ^e

^a National Taiwan Ocean University, Taiwan

^b South China Sea Institute of Oceanology, China

^c Fisheries Research Institute, Taiwan

^d National Taipei University of Education, Taiwan

^e Institute of Oceanography, National Taiwan University/Ocean Data Bank of the Ministry of National Science and Technology Council, Taiwan

Calanopia aurivilli (4a/8a/f), *elliptica* (4a/8a/f), *herdmani* (5b/9b/f), *minor* (4b/8b/f), *thompsoni* (2a/6a/f)

1a	Female	2
1b	Male	6
2a/1a	Cephalosome with a pair of lateral hooks. Anal somite as long as caudal ramus.....	<i>Calanopia thompsoni</i>
2b	Cephalosome without lateral hooks. Anal somite longer than caudal ramus.....	3
3a/2b	Leg 5 with 3 segments. Anal somite more than 2 times as long as caudal ramus	4
3b	Leg 5 with 4-segments. Anal somite less than 2 times as long as caudal ramus.....	5
4a/3a	Leg 5 distal segment with 3 outer spines; terminal spine 2.5 times as long as distal segment. Anal somite more than 3 times as long as caudal ramus	<i>Calanopia aurivilli</i>
4b	Leg 5 distal segment with 2 outer spines; terminal spine less than 2 times as long as distal segment. Anal somite less than 2.5 times as long as caudal ramus.....	<i>Calanopia minor</i>
5a/3b	Genital double-somite slightly longer than anal somite. Leg 5: terminal spine as long as distal segment	<i>Calanopia elliptica</i>
5b	Genital double-somite nearly 3 times as long as anal somite. Leg 5: terminal spine more than 1.5 times as long as distal segment	<i>Calanopia herdmani</i>
6a/1b	Cephalosome with a pair of lateral hooks. Left leg 5 segment 4 with rounded terminal end armed with short spinules	<i>Calanopia thompsoni</i>
6b	Cephalosome without lateral hooks. Left leg 5 segment 4 with pointed terminal end	7
7a/6b	Left leg 5: inner margin of segment 2 forming a triangular process.....	8
7b	Left leg 5: inner margin of segment 2 straight, without triangular process	9
8a/7a	Left leg 5: segment 3 length 1.6 times width; segment 2: tip of inner triangular process rounded.....	<i>Calanopia aurivilli</i>
8b	Left leg 5: segment 3 length 2.6 times width; segment 2: tip of inner triangular process armed with a small sharp process	<i>Calanopia minor</i>
9a/7b	Urosomite 2 with a small spine at right lateral distal corner. Left leg 5: segment 3 subequal to segment 4 in length	<i>Calanopia elliptica</i>
9b	Urosomite 2 without spine at lateral distal corner. Left leg 5: segment 3 more than 3 times as long as segment 4	<i>Calanopia herdmani</i>

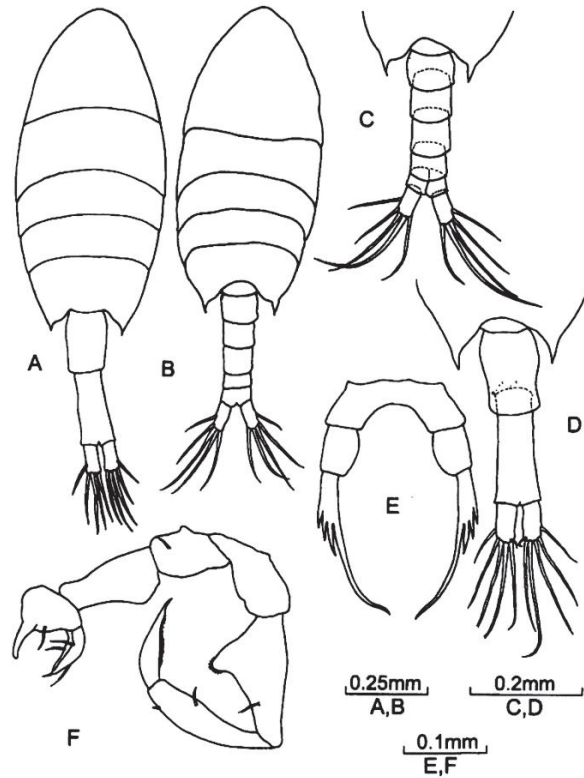
Available online 14 November 2022

* Corresponding author.

E-mail address: ctshih@mail.ntou.edu.tw (C.-t. Shih).



Calanopia aurivilli Cleve, 1901 (Size: female, 1.05–1.56 mm; male, 0.98–1.50 mm)

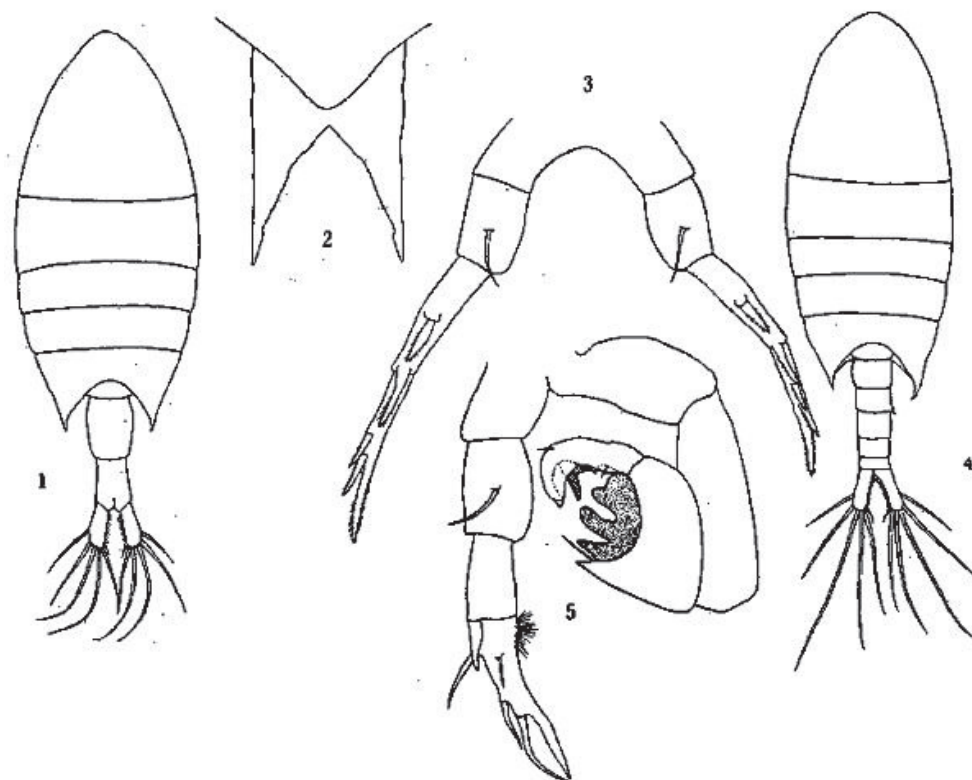


Calanopia aurivilli Cleve, 1901

Othman & Toda, 2006: Fig. 2. *Calanopia aurivilli* Cleve, 1901, Female. A. habitus (dorsal); D. posterior prosome & urosome (dorsal); E. leg 5. Male. B. habitus (dorsal); C. posterior prosome & urosome (dorsal); F. leg 5 (anterior).

Adapted from Razouls C., de Bovée F., Kouwenberg J. and Desreumaux N., 2005–2020. Diversity and Geographic Distribution of Marine Planktonic Copepods. Sorbonne University, CNRS. Available at <http://copepodes.obs-banyuls.fr/en> [Accessed May 21, 2021].

Calanopia elliptica (Dana, 1849) (Size: female, 1.40–2.10 mm; male, 1.40–1.90 mm)

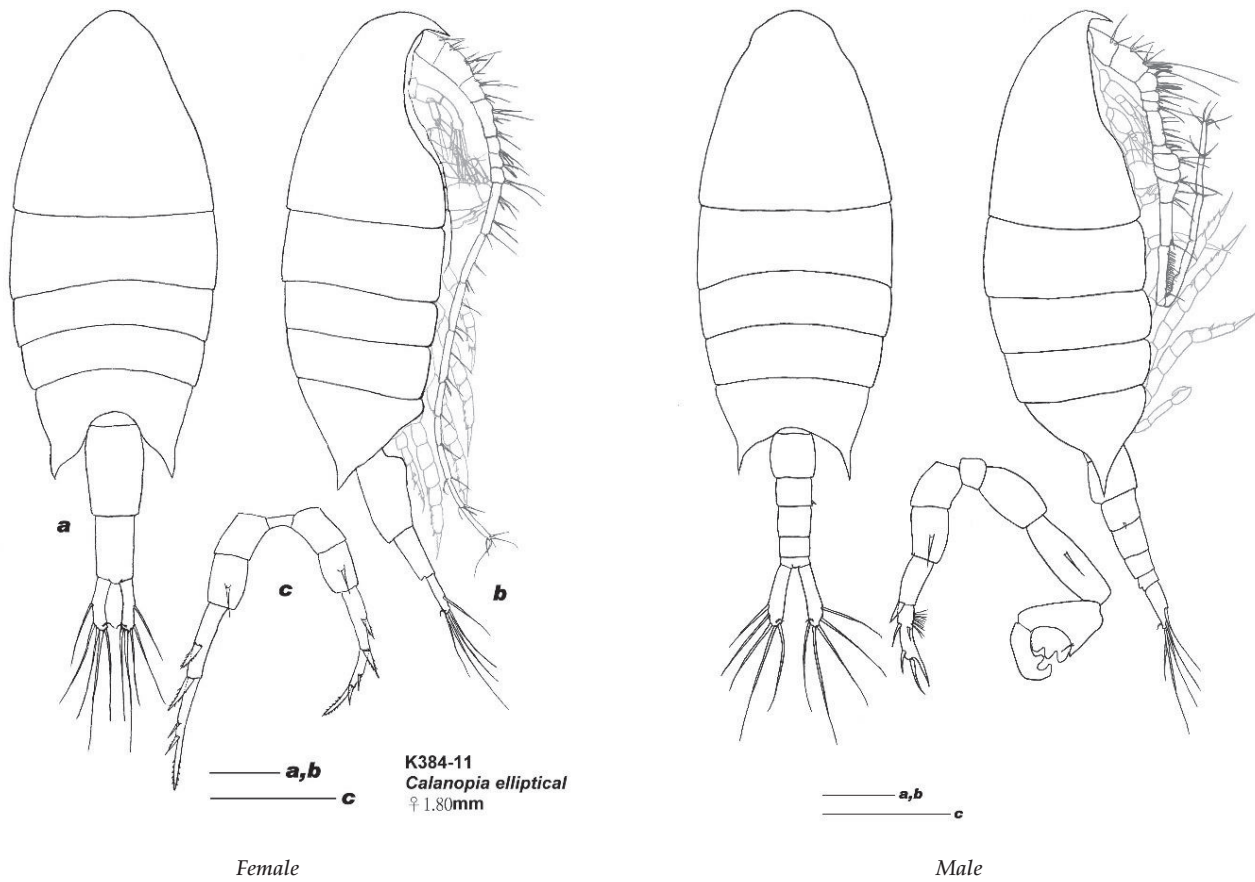


Calanopia elliptica (Dana, 1849)

Chen & Zhang, 1965: pl. 39. Female (from East China Sea). 1. habitus (dorsal); 2. rostrum (ventral); 3. leg 5 (posterior). Male. 4. habitus (dorsal); 5. leg 5 (posterior).

Adapted from Razouls C., de Bovée F., Kouwenberg J. and Desreumaux N., 2005–2020. Diversity and Geographic Distribution of Marine Planktonic Copepods. Sorbonne University, CNRS. Available at <http://copepodes.obs-banyuls.fr/en> [Accessed May 21, 2021].

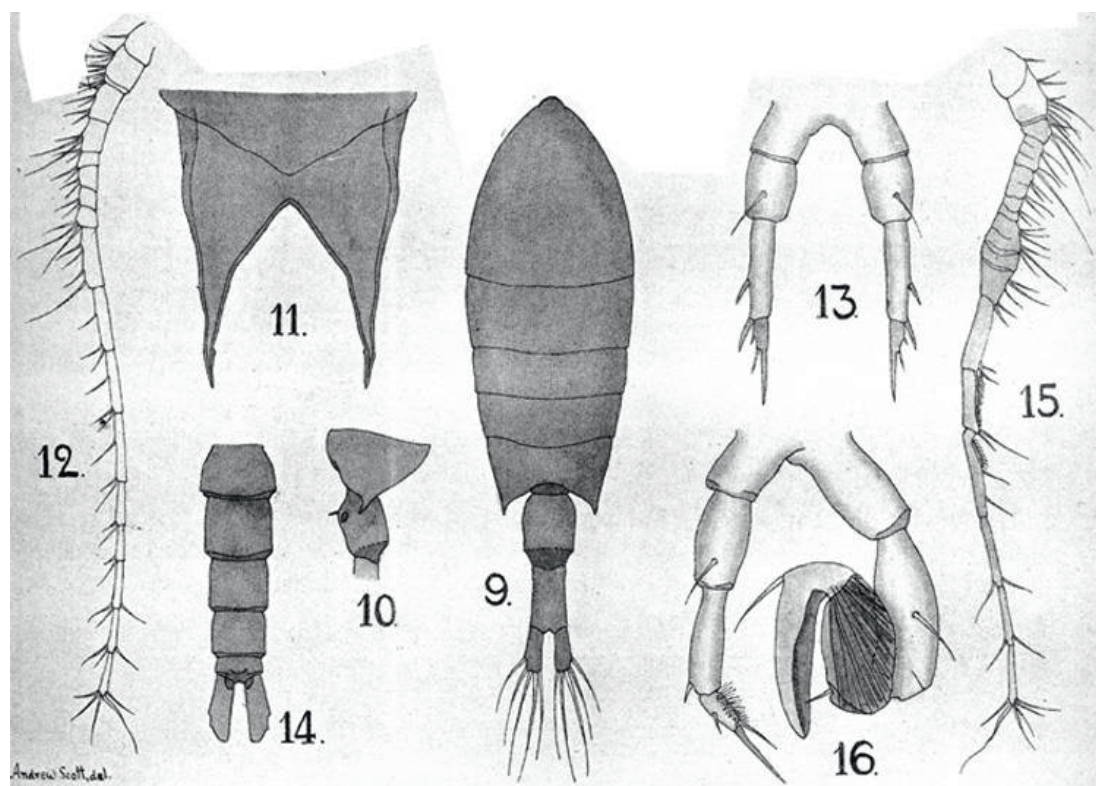
Calanopia elliptica (Dana, 1849)



Calanopia elliptica (Dana, 1849)

Original. *Calanopia elliptica* (Dana, 1849), Female, 1.80 mm, East China Sea (25°30'N, 122°09'E): a/b. habitus (dorsal/lateral); c. leg 5, posterior. Scale: 0.2 mm. Male, 1.80 mm, East China Sea (25°30'N, 122°09'E): a.b. habitus (dorsal/lateral); c. leg 5, posterior. Scale: 0.2 mm.

Calanopia herdmani A. Scott, 1909 (Size: female, 1.78–1.97 mm; male, 1.70–1.79 mm)

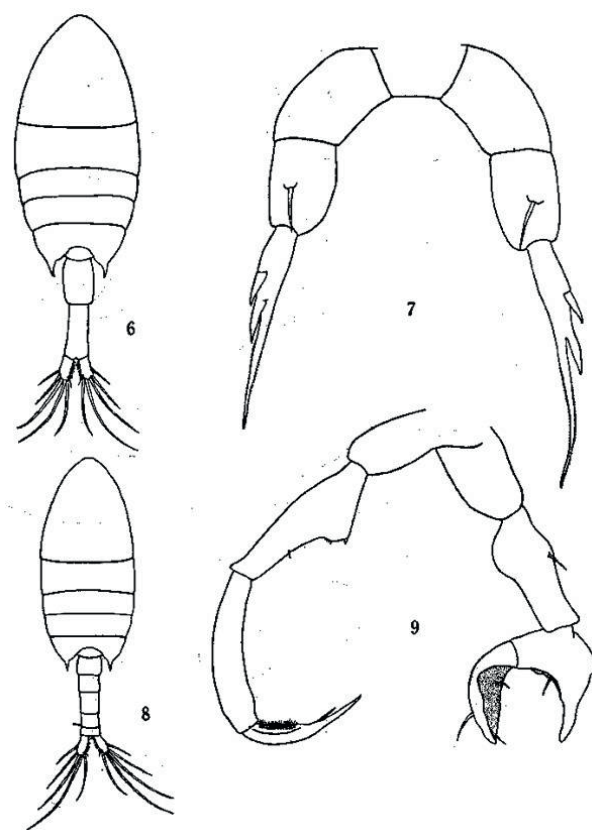


Calanopia herdmani A. Scott, 1909

Scott, 1909: pl. 49. Female. 9. habitus (dorsal); 10. posterior prosome and genital double-somite (lateral); 11. rostrum; 12. antennule; 13. leg 5. Male. 14. urosome (dorsal); 15. right antennule; 16. leg 5 (posterior).

Adapted from Razouls C., de Bovée F., Kouwenberg J. and Desreumaux N., 2005–2020. Diversity and Geographic Distribution of Marine Planktonic Copepods. Sorbonne University, CNRS. Available at <http://copepodes.obs-banyuls.fr/en> [Accessed September 21, 2020].

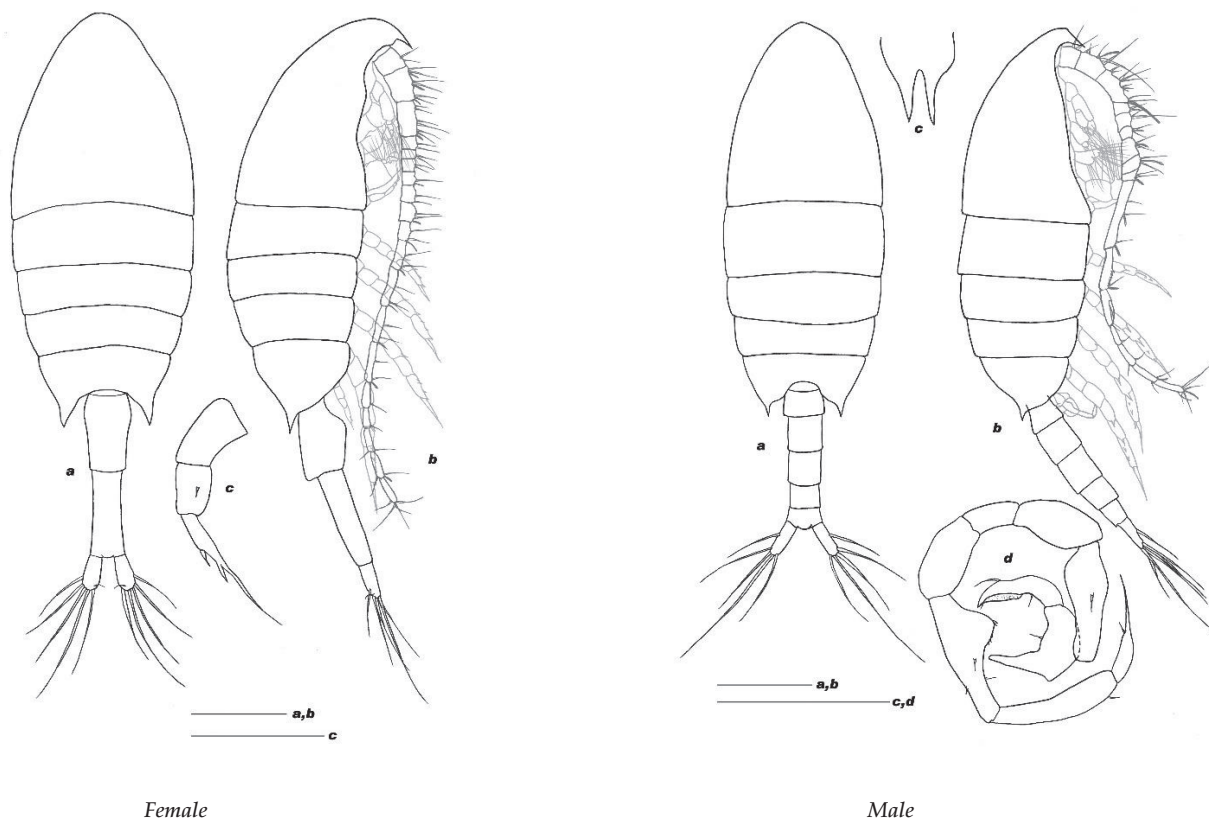
Calanopia minor A. Scott, 1902 (Size: female, 1.14–1.50 mm; male, 1.06–1.37 mm)



Calanopia minor A. Scott, 1902

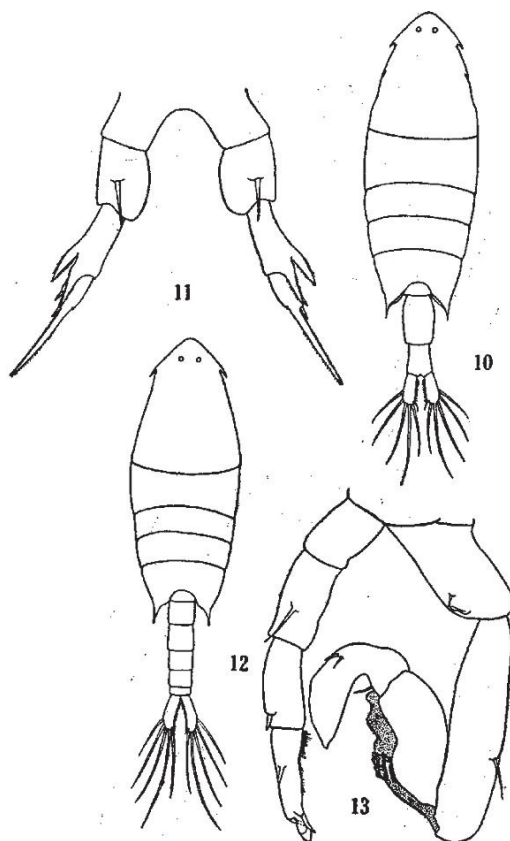
Chen & Zhang, 1965: pl. 39. *Calanopia minor* A. Scott, 1902 Female (from East China Sea). 6. habitus (dorsal); 7. leg 5 (posterior). Male. 8. habitus (dorsal); 9. leg 5 (posterior).

Adapted from Razouls C., de Bovée F., Kouwenberg J. and Desreumaux N., 2005–2020. Diversity and Geographic Distribution of Marine Planktonic Copepods. Sorbonne University, CNRS. Available at <http://copepodes.obs-banyuls.fr/en> [Accessed May 21, 2021].

Calanopia minor A. Scott, 1902*Calanopia minor* A. Scott, 1902

Original. *Calanopia minor* A. Scott, 1902. Female, 1.24 mm, East China Sea (23°57'N, 122°16'E): a/b. habitus (dorsal/lateral); c. left leg 5 (posterior). Scales: a, b = 0.2 mm; c = 0.1 mm. Male, 1.14 mm, East China Sea (23°57'N, 122°16'E): a/b. habitus (dorsal/lateral); c. rostrum (ventral); d. leg 5 (posterior). Scales: a, b = 0.3 mm; c, d = 0.2 mm.

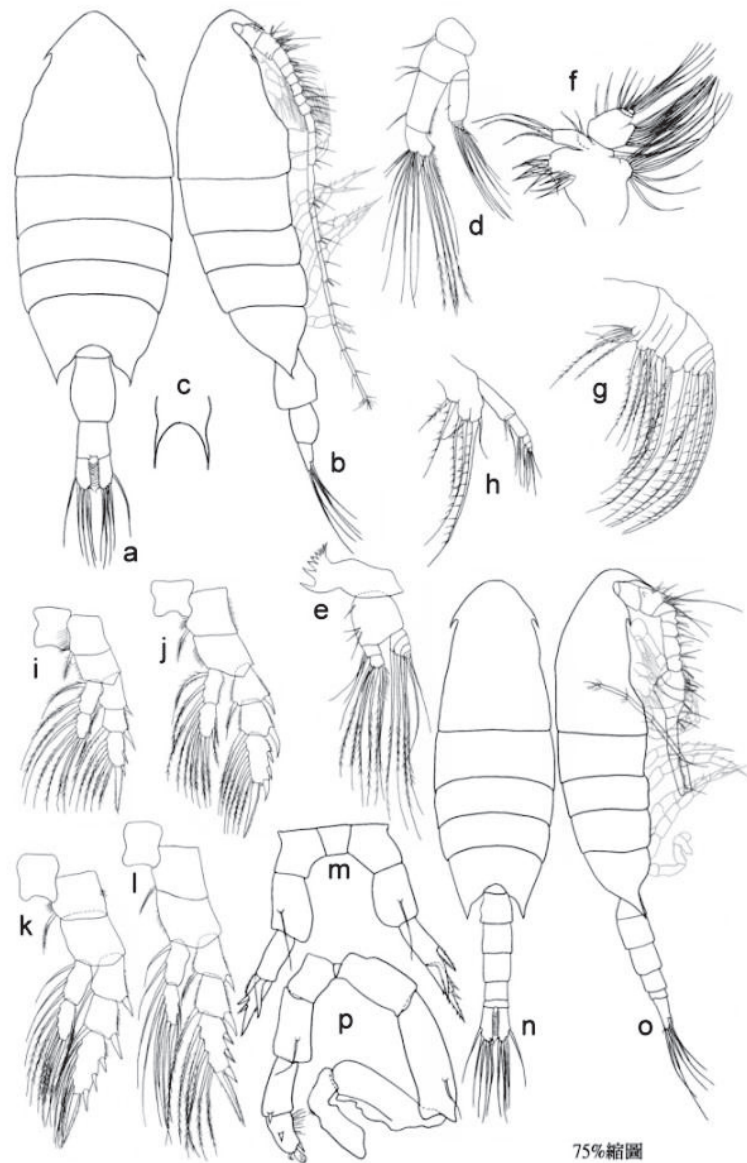
Calanopia thompsoni A. Scott, 1909 (Size: female, 1.78–2.62 mm; male, 1.60–2.52 mm)



Calanopia thompsoni A. Scott, 1909

Chen & Zhang, 1965: pl. 38. Female (from East China Sea). 10. habitus (dorsal); 11. leg 5 (posterior). Male (from East China Sea). 12. habitus (dorsal); 13. leg 5 (posterior).

Adapted from Razouls C., de Bovée F., Kouwenberg J. and Desreumaux N., 2005–2020. Diversity and Geographic Distribution of Marine Planktonic Copepods. Sorbonne University, CNRS. Available at <http://copepodes.obs-banyuls.fr/en> [Accessed September 21, 2020].

Calanopia thompsoni A. Scott, 1909*Calanopia thompsoni* A. Scott, 1909

Original. *Calanopia thompsoni* A. Scott, 1909, Female, 2.50 mm, South China Sea: a/b. habitus (dorsal/lateral); c. rostrum (ventral); d. right antenna (posterior); e. right mandible (posterior); f. right maxillule (posterior); g. right maxilla (posterior); h. right maxilliped (posterior); i. right leg 1 (posterior); j. right leg 2 (posterior); k. right leg 3 (posterior); l. right leg 4 (posterior); m. leg 5 (posterior). Male. n/o. habitus (dorsal/lateral); p. leg 5 (posterior).