



Key to the species of Phaennidae Onchocalanus occurring in the China Seas

Chang-tai Shih
National Taiwan Ocean University, ctshih@mail.ntou.edu.tw

Qing-Chao Chen
South China Sea Institute of Oceanology

Yang-Chi Lan
Fisheries Research Institute

Shih-Hui Hsiao
National Taipei University of Education

Chi-Yu Weng
Institute of Oceanography, National Taiwan University/Ocean Data Bank of the Ministry of National Science and Technology Council, Taiwan

Follow this and additional works at: <https://jmstt.ntou.edu.tw/journal>



Part of the [Fresh Water Studies Commons](#), [Marine Biology Commons](#), [Ocean Engineering Commons](#), [Oceanography Commons](#), and the [Other Oceanography and Atmospheric Sciences and Meteorology Commons](#)

Recommended Citation

Shih, Chang-tai; Chen, Qing-Chao; Lan, Yang-Chi; Hsiao, Shih-Hui; and Weng, Chi-Yu (2022) "Key to the species of Phaennidae Onchocalanus occurring in the China Seas," *Journal of Marine Science and Technology*: Vol. 30: Iss. 5, Article 61.

DOI: 10.51400/2709-6998.2652

Available at: <https://jmstt.ntou.edu.tw/journal/vol30/iss5/61>

This Review-Taxonomic Index is brought to you for free and open access by Journal of Marine Science and Technology. It has been accepted for inclusion in Journal of Marine Science and Technology by an authorized editor of Journal of Marine Science and Technology.

REVIEW-TAXONOMIC INDEX

Key to the Species of Phaennidae *Onchocalanus* Occurring in the China Seas

Chang-tai Shih ^{a,*}, Qing-Chao Chen ^b, Yang-Chi Lan ^c, Shih-Hui Hsiao ^d, Chi-Yu Weng ^e

^a National Taiwan Ocean University, Taiwan

^b South China Sea Institute of Oceanology, China

^c Fisheries Research Institute, Taiwan

^d National Taipei University of Education, Taiwan

^e Institute of Oceanography, National Taiwan University/Ocean Data Bank of the Ministry of National Science and Technology Council, Taiwan

Onchocalanus affinis(3a/5a/f), *cristatus* (2a/5b/f), *trigoniceps*(3b/4a/f)

1a	Female	2
1b	Male	4
2a/1b	Cephalosome with crest. Leg 1 exopod segment 2: distal outer spine reaching midlength of exopod segment 3	<i>Onchocalanus cristatus</i>
2b	Cephalosome without crest. Leg 1 exopod segment 2: distal outer spine reaching beyond midlength of exopod segment	3
3a/2b	Leg 5, length/width ratio of segment 3: 3.4; length ratio of segment 3/segment 2: 1.3	<i>Onchocalanus affinis</i>
3b	Leg 5: length/width ratio of segment 3: 4.8; length ratio of segment 3/segment 2: 1.6	<i>Onchocalanus trigoniceps</i>
4a/1b	Left leg 5: segment 4 nearly 4 times as long as segment 5	<i>Onchocalanus trigoniceps</i>
4b	Left leg 5: segment 4 less than 2 times as long as segment 5	5
5a/4b	Prosome more than 4 times as long as urosome. Left leg 5: segment 4 longer than segment 2	<i>Onchocalanus affinis</i>
5b	Prosome 3 times as long as urosome. Left leg 5: segment 4 shorter than segment 2	<i>Onchocalanus cristatus</i>

Available online 14 November 2022

* Corresponding author.

E-mail address: ctshih@mail.ntou.edu.tw (C.-t. Shih).



Onchocalanus affinis With, 1915 (Size: female, 4.80–6.50 mm; male, 4.10–5.86 mm)

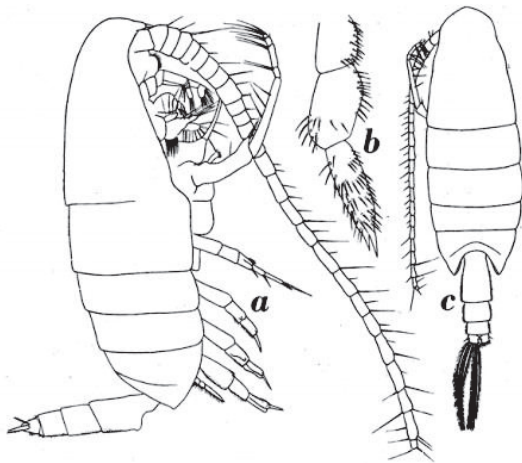


Fig. 12

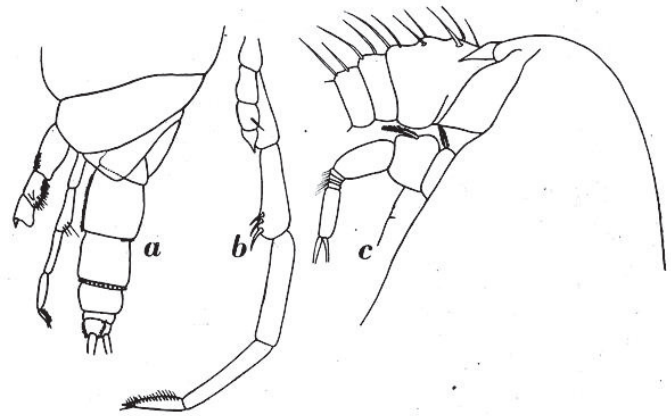


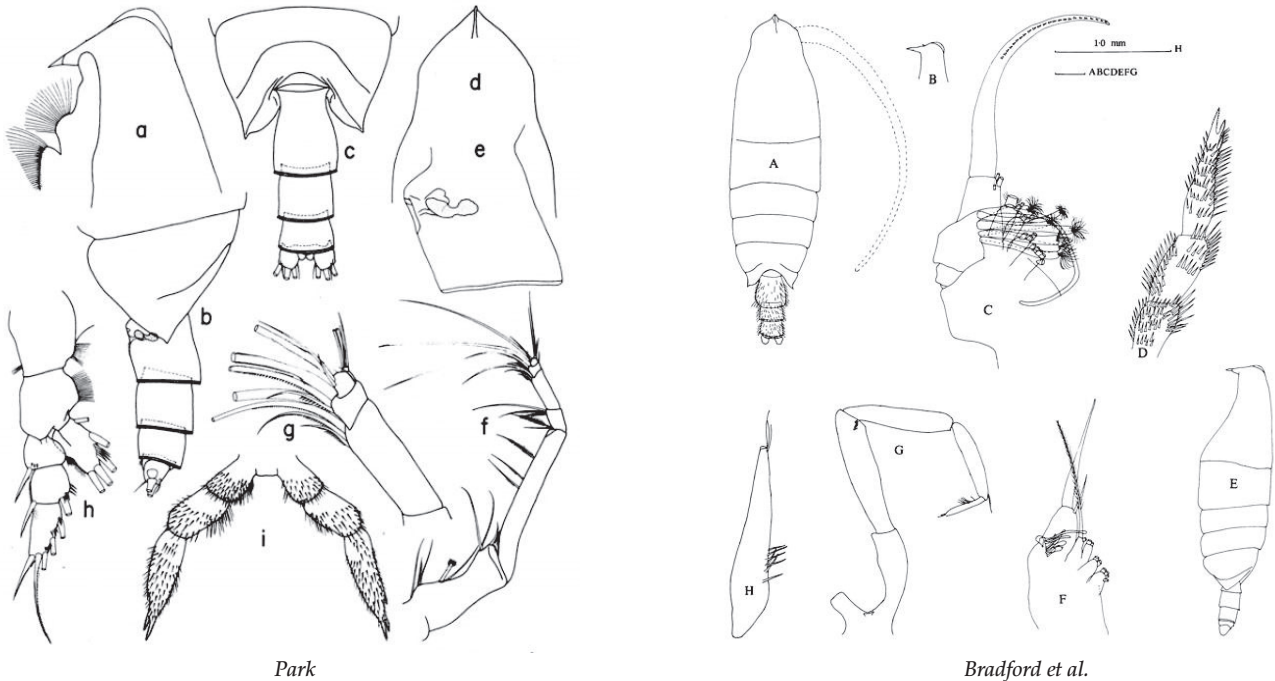
Fig. 14

Onchocalanus affinis With, 1915

Vervoort, 1950: fig. 12. *Onchocalanus affinis* With, 1915, Female (from Flores Sea). a. habitus (lateral); b. left leg 5 (posterior); c. habitus (dorsal). Fig. 14. Male (from Ombai Strait: 163.8°S, 124°24'.5E). a. posterior prosome & urosome (lateral); b. leg 5 (anterior); c. forehead (lateral).

Adapted from Razouls C., de Bovée F., Kouwenberg J. and Desreumaux N., 2005–2020. Diversity and Geographic Distribution of Marine Planktonic Copepods. Sorbonne University, CNRS. Available at <http://copepodes.obs-banyuls.fr/en> [Accessed May 18 2021].

Onchocalanus cristatus (Wolfenden, 1904) (Size: female, 5.00–8.15 mm; male, 5.60–6.50 mm)



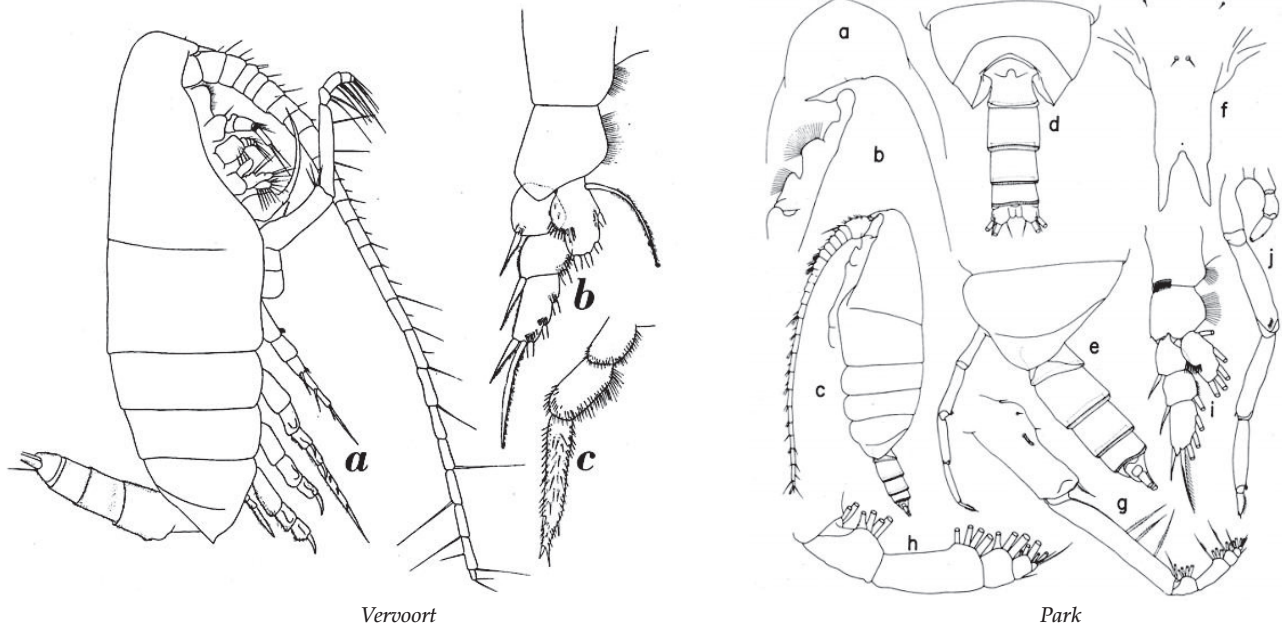
Onchocalanus cristatus (Wolfenden, 1904)

Park, 1983: fig. 13. *Onchocalanus cristatus* (Wolfenden, 1904), Female. a. forehead (lateral); b/c. posterior prosome & urosome (lateral/dorsal); d. forehead (dorsal); e. genital double-somite (lateral); f. maxilliped; g. maxilliped, distal part; h. leg 1 (posterior); i. leg 5 (posterior).

Bradford et al., 1983: fig. 37. Female. A. habitus (dorsal); B. forehead (lateral); C. maxilla; D. leg 5. Male. E. habitus (lateral); F. maxilla; G. leg 5 (posterior); H. left leg 5, distal part.

Adapted from Razouls C., de Bovée F., Kouwenberg J. and Desreumaux N., 2005–2020. Diversity and Geographic Distribution of Marine Planktonic Copepods. Sorbonne University, CNRS. Available at <http://copepodes.obs-banyuls.fr/en> [Accessed May 18 2021].

Onchocalanus trigoniceps G.O. Sars, 1905 (Size: female, 5.10–9.16 mm; male, 4.85–6.95 mm)



Onchocalanus trigoniceps G.O. Sars, 1905

Vervoort, 1950: fig. 3 (from Banda Sea), *Onchocalanus trigoniceps* G.O. Sars, 1905, Female. a. habitus (lateral); b. left leg 1 (posterior); c. left leg 5 (posterior).

Park, 1983: fig. 9. Male. a/b. forehead (dorsal/lateral); c. habitus (lateral); d/e. posterior prosome and urosome (dorsal/lateral); f. rostrum (anterior); g. maxilliped; h. maxilliped, distal pat; i. leg 1 (anterior); j. leg 5 (posterior).

Adapted from Razouls C., de Bovée F., Kouwenberg J. and Desreumaux N., 2005–2020. Diversity and Geographic Distribution of Marine Planktonic Copepods. Sorbonne University, CNRS. Available at <http://copepodes.obs-banyuls.fr/en> [Accessed May 18 2021].