



Key to the species of Paracalanidae Calocalanus occurring in the China Seas

Chang-tai Shih
National Taiwan Ocean University, ctshih@mail.ntou.edu.tw

Qing-Chao Chen
South China Sea Institute of Oceanology

Yang-Chi Lan
Fisheries Research Institute

Shih-Hui Hsiao
National Taipei University of Education

Chi-Yu Weng
Institute of Oceanography, National Taiwan University/Ocean Data Bank of the Ministry of National Science and Technology Council, Taiwan

Follow this and additional works at: <https://jmstt.ntou.edu.tw/journal>



Part of the [Fresh Water Studies Commons](#), [Marine Biology Commons](#), [Ocean Engineering Commons](#), [Oceanography Commons](#), and the [Other Oceanography and Atmospheric Sciences and Meteorology Commons](#)

Recommended Citation

Shih, Chang-tai; Chen, Qing-Chao; Lan, Yang-Chi; Hsiao, Shih-Hui; and Weng, Chi-Yu (2022) "Key to the species of Paracalanidae Calocalanus occurring in the China Seas," *Journal of Marine Science and Technology*: Vol. 30: Iss. 5, Article 58.

DOI: 10.51400/2709-6998.2649

Available at: <https://jmstt.ntou.edu.tw/journal/vol30/iss5/58>

This Review-Taxonomic Index is brought to you for free and open access by Journal of Marine Science and Technology. It has been accepted for inclusion in Journal of Marine Science and Technology by an authorized editor of Journal of Marine Science and Technology.

REVIEW-TAXONOMIC INDEX

Key to the Species of Paracalanidae *Calocalanus* Occurring in the China Seas

Chang-tai Shih ^{a,*}, Qing-Chao Chen ^b, Yang-Chi Lan ^c, Shih-Hui Hsiao ^d, Chi-Yu Weng ^e

^a National Taiwan Ocean University, Taiwan

^b South China Sea Institute of Oceanology, China

^c Fisheries Research Institute, Taiwan

^d National Taipei University of Education, Taiwan

^e Institute of Oceanography, National Taiwan University/Ocean Data Bank of the Ministry of National Science and Technology Council, Taiwan

Calocalanus contractus, *gracilis*(3a/10a/f), *monospinus*(6a/11a/f), *pavo*(8b/13a/f), *pavoninus*(7a/14a/f), *plumatus*(4a/f) (male unknown), *plumulosus*(3b/14b/f), *styliremis*(6b/10b/f) (**monospinus*, *styliremis* excluded from males in the key)

1a	Female. Urosome 2- to 4-segmented. Leg 5 symmetrical.....	2
1b	Male. Urosome 5-segmented. Leg 5 asymmetrical.....	9
2a/1a	Urosome 3-segmented.....	3
2b	Urosome 2-segmented.....	4
3a/2a	Leg 5 with 3 segments.....	<i>Calocalanus gracilis</i>
3b	Leg 5 with 4 segments.....	<i>Calocalanus plumulosus</i>
4a/2b	Leg 5 asymmetrical. Right leg 5 with 4 segments; left leg 5 with 3 segments.....	<i>Calocalanus plumatus</i>
4b	Leg 5 symmetrical, 3- or 4-segmented.....	5
5a/4b	Leg 5 with 3 segments.....	6
5b	Leg 5 with 4 segments.....	7
6a/5a	Genital double-somite 1.5 times as long as anal somite.....	<i>Calocalanus monospinus</i>
6b	Genital double-somite more than 3 times as long as anal somite.....	<i>Calocalanus styliremis</i>
7a/5b	Genital double-somite 5 times as long as anal somite. Leg 5: segment 4 subequal to segment 3 in length.....	<i>Calocalanus pavoninus</i>
7b	Genital double-somite less than 3 times as long as anal somite. Leg 5 segment 4 twice or more longer than segment 3...8	
8a/7b	Leg 5: segment 4 rectangular, naked, more than 3 times as long as segment 3. Genital double-somite 2.5 times as long as anal somite.....	<i>Calocalanus contractus</i>
8b	Leg 5: segment 4 trapezoid, with horizontal rows of spinules near distal border, less than 3 times as long as segment 3. Genital double-somite 1.5 times as long as anal somite.....	<i>Calocalanus pavo</i>
9a/1b	Right leg 5 with 3 segments.....	10
9b	Right leg 5 with 4 segments.....	11
10a/9a	Prosoma length 3.5 times width. Right leg 5: terminal seta more than 2 times as long as segment 4.....	<i>Calocalanus gracilis</i>
10b	Prosoma length 2 times width. Right leg 5: terminal seta slightly shorter than segment 4.....	<i>Calocalanus styliremis</i>
11a/9b	Right leg 5 reached midlength of left leg 5 segment 3. Prosoma length nearly 4 times width.....	<i>Calocalanus monospinus</i>
11b	Right leg 5 not extending beyond left leg 5 segment 2. Prosoma length less than 3 times width.....	12
12a/1b	Left leg 5 segments 3 and 4 with pointed process at outer distal corner. Caudal rami parallel. Right leg 5 totally naked.....	<i>Calocalanus contractus</i>
12b	Left leg 5 with outer distal spine on segments 4 and 5. Right leg 5 segment 4 with terminal spines.....	13
13a/12b	Posterolateral corner of prosoma angular. Left leg 5: combined length of segments 3–5 nearly 1.5 times as long as combined length of segments 1 & 2. Caudal ramus length nearly twice width.....	<i>Calocalanus pavo</i>

Available online 14 November 2022

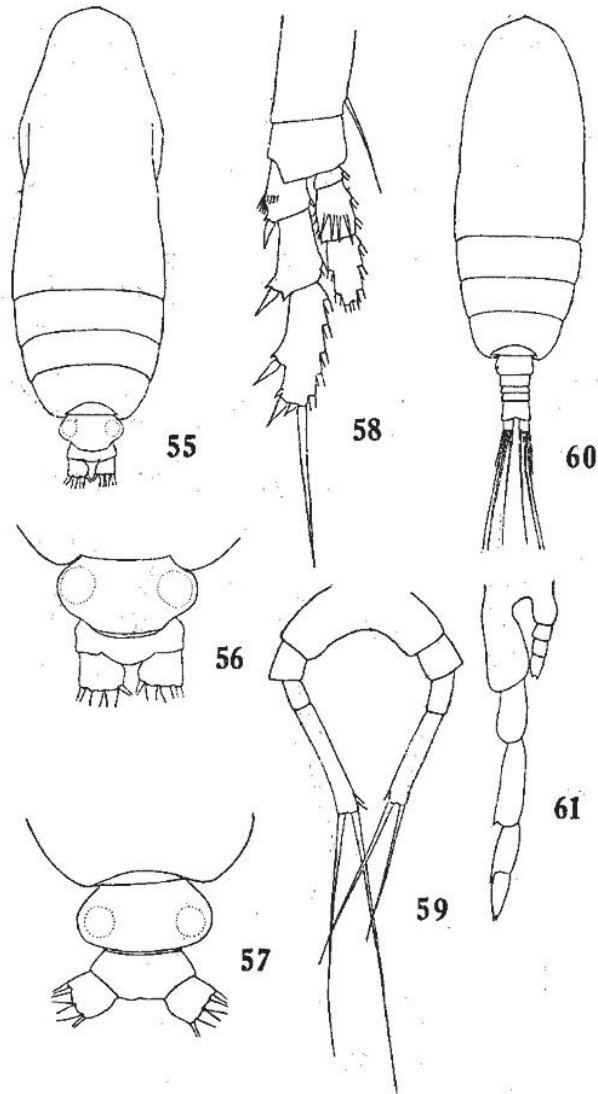
* Corresponding author.

E-mail address: ctshih@mail.ntou.edu.tw (C.-t. Shih).



13b	Posterolateral corner of prosome rounded. Left leg 5: combined length of segments 3–5 shorter than combined length of segments 1 & 2. Caudal ramus length subequal to width.....	14
14a/13b	Right leg 5 shorter than segment 1 of left leg 5. Left leg segment 3 with spinules near distal border of segment 3. Anal somite nearly as long as combined length of urosomites 2 to 4.....	<i>Calocalanus pavoninus</i>
14b	Right leg 5 as long as combined length of segments 1 & 2 of left leg 5. Left leg segment 1 with spines on segment a. Anal somite nearly as long as urosomite 4.....	<i>Calocalanus plumulosus</i>

Calocalanus contractus Farran, 1926 (Size: female: 0.57–0.84 mm; male, 0.45–0.55 mm)

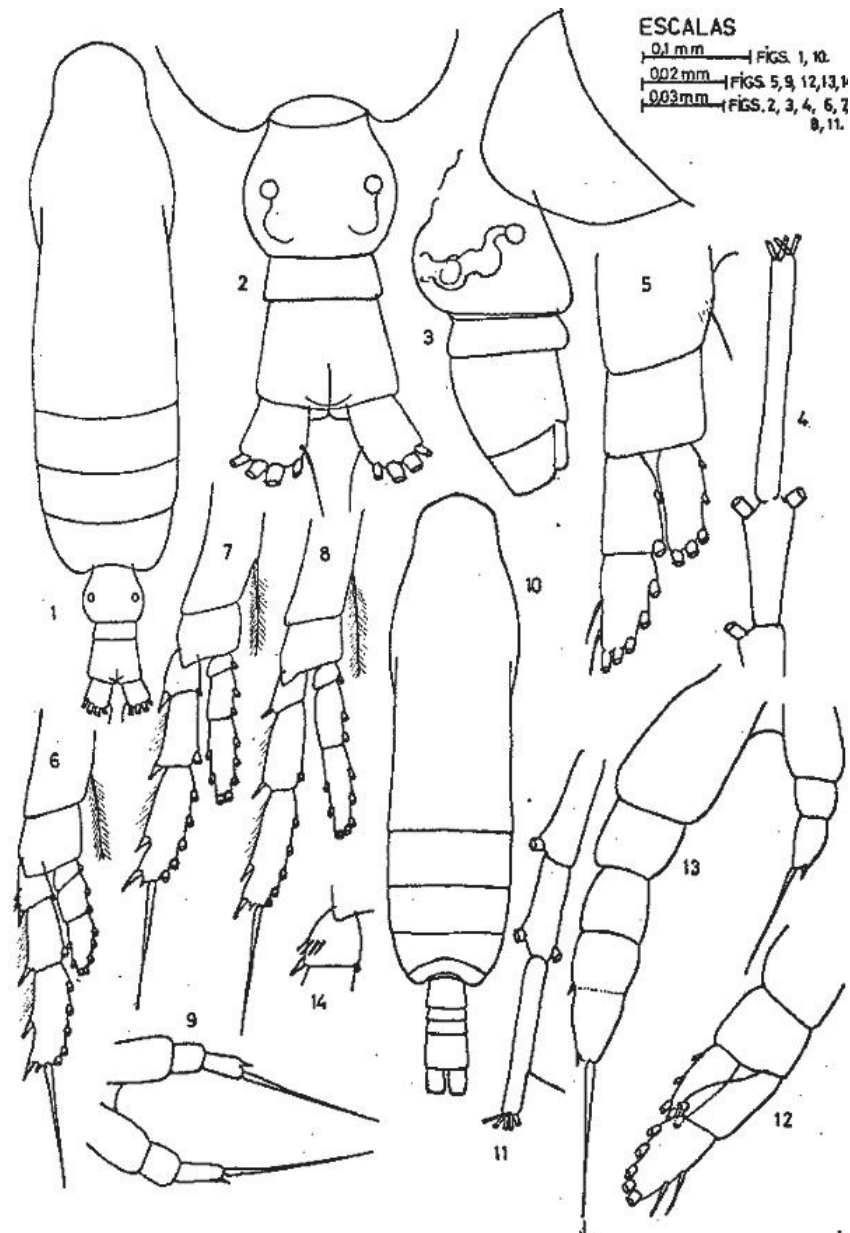


Calocalanus contractus Farran, 1926

Chen & Zhang, 1974: figs. *Calocalanus contractus* Farran, 1926, female (from South China Sea). 55. habitus (dorsal); 56. urosome (dorsal); 57. urosome (dorsal, another specimen). 58. leg 4; 59. leg 5. Male. 60. habitus (dorsal); 61. leg 5 (posterior).

Adapted from Razouls C., de Bovée F., Kouwenberg J. and Desreumaux N., 2005–2020. Diversity and Geographic Distribution of Marine Planktonic Copepods. Sorbonne University, CNRS. Available at <http://copepodes.obs-banyuls.fr/en> [Accessed May 06 2021].

Calocalanus gracilis Tanaka, 1956 (Size: female: 0.60–0.70 mm; male, 0.57–0.60 mm)

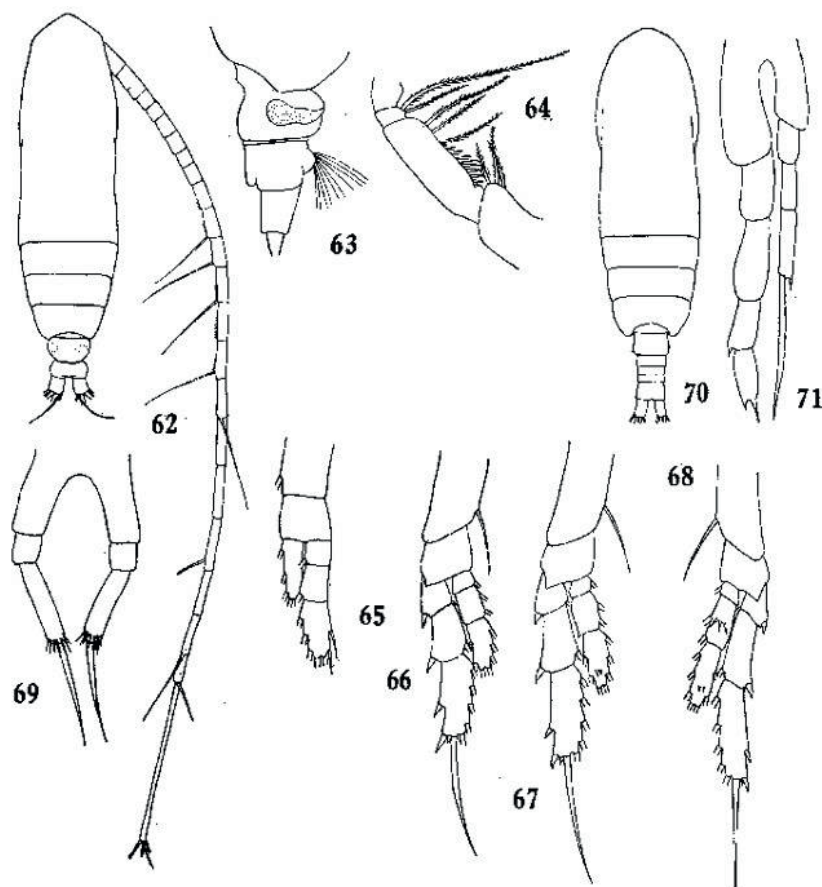


Calocalanus gracilis Tanaka, 1956

Corral Estrada, 1970: pl. 37. *Calocalanus gracilis* Tanaka, 1956, Female (from Canary Island). 1. habitus (dorsal); 2/3. urosome (dorsal/lateral). 4. antennule, distal segments; 5. leg 1; 6–9. leg 2–5. Male. 10. habitus (dorsal); 11. antennule, distal segments; 12. leg 1; 13. leg 5 (posterior); 14. leg 2, exopod segment 1.

Adapted from Razouls C., de Bovée F., Kouwenberg J. and Desreumaux N., 2005–2020. Diversity and Geographic Distribution of Marine Planktonic Copepods. Sorbonne University, CNRS. Available at <http://copepodes.obs-banyuls.fr/en> [Accessed May 04 2021].

Calocalanus monospinus Chen & Zhang, 1965 (Size: female: 0.65–0.80 mm; male, 0.53–0.58 mm)

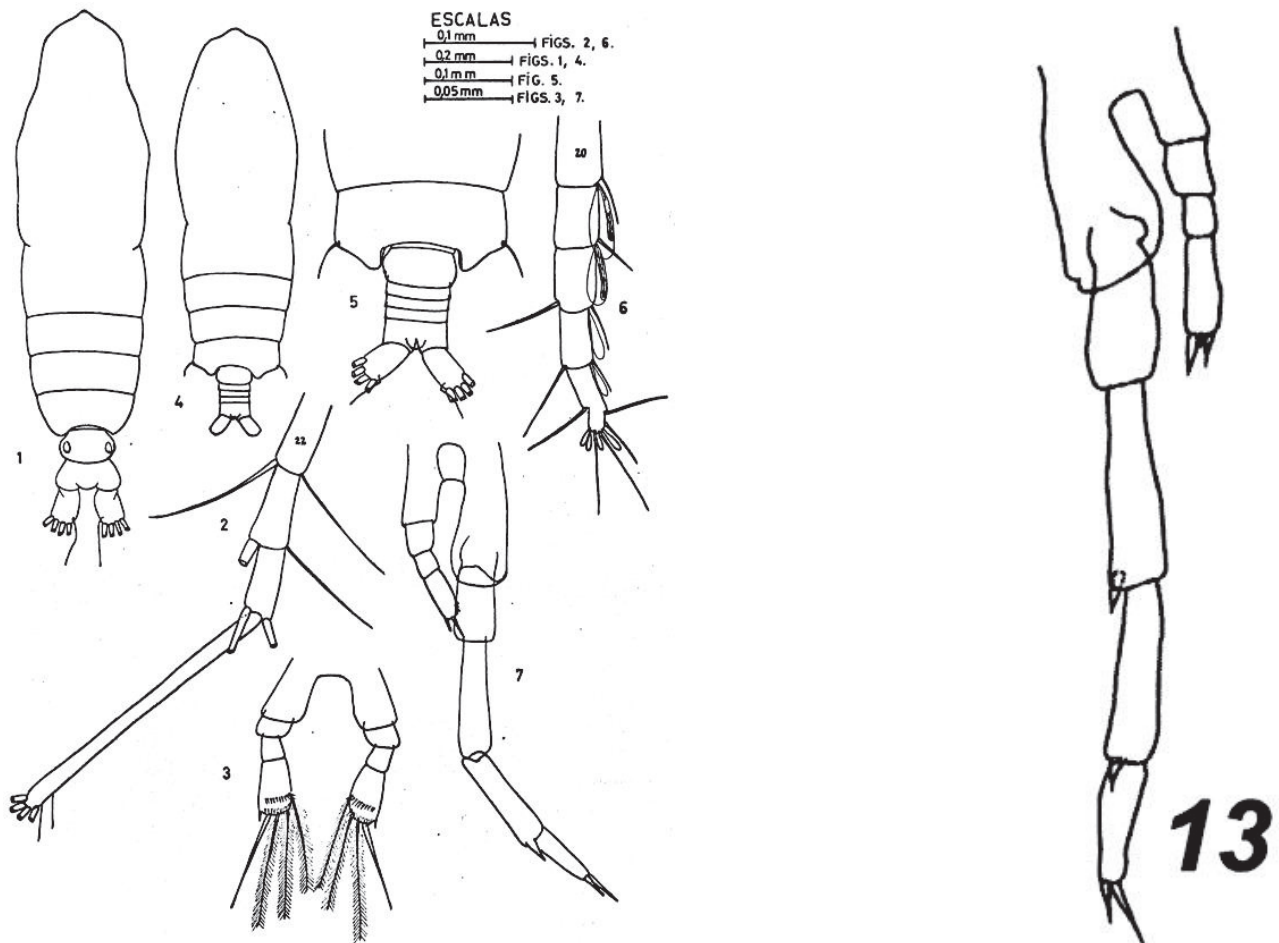


Calocalanus monospinus Chen & Zhang, 1965

Chen & Zhang, 1974: pl. 6. *Calocalanus monospinus* Chen & Zhang, 1965, Female (from South China Sea). 62. habitus (dorsal); 63. urosome (lateral); 64. maxilliped (middle part); 65. leg 1; 66. leg 2; 67. leg 3; 68. leg 3 (posterior); 69. leg 5. Male. 70. habitus (dorsal); 71. leg 5 (posterior).

Adapted from Razouls C., de Bovée F., Kouwenberg J. and Desreumaux N., 2005–2020. Diversity and Geographic Distribution of Marine Planktonic Copepods. Sorbonne University, CNRS. Available at <http://copepodes.obs-banyuls.fr/en>[Accessed May 04 2021].

Calocalanus pavo (Dana, 1849) (Size: female: 0.79–1.40 mm; male, 0.60–1.18 mm)



Corral Estrada

Calocalanus pavo (Dana, 1849)

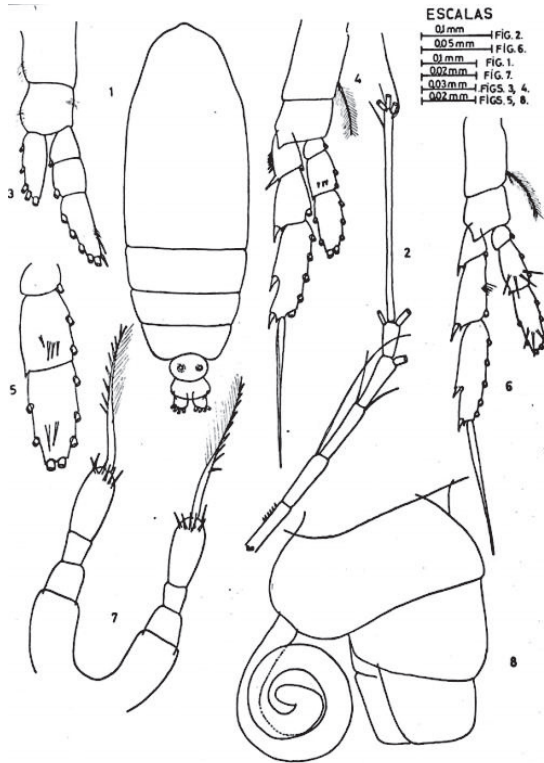
Andronov

Corral Estrada, 1970: pl. 25. *Calocalanus pavo* (Dana, 1849), Female (from Canary Island). 1. habitus (dorsal); 2. antennule, distal segments; 3. leg 5. Male. 4. habitus (dorsal); 5. posterior prosome & urosome (dorsal); 6. antennule, distal segments; 7. leg 5 (anterior).

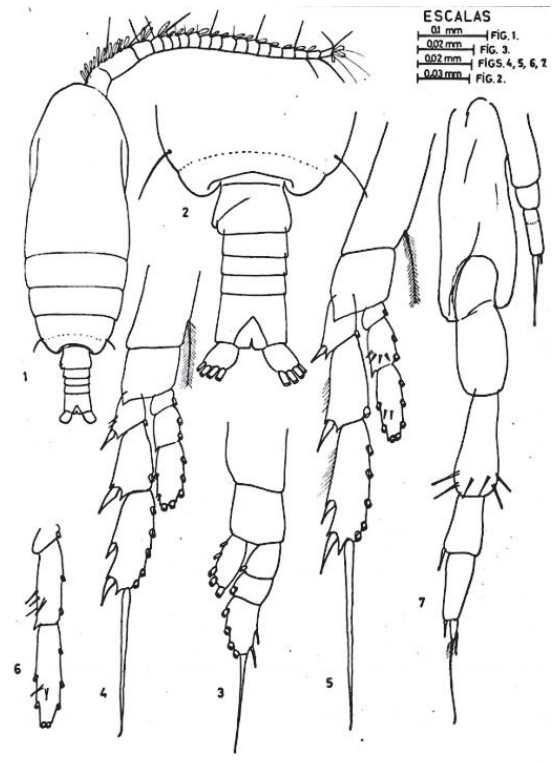
Andronov, 2014: *Calocalanus pavo* (Dana, 1849), Male. 13. Leg 5 (posterior).

Adapted from Razouls C., de Bovée F., Kouwenberg J. and Desreumaux N., 2005–2020. Diversity and Geographic Distribution of Marine Planktonic Copepods. Sorbonne University, CNRS. Available at <http://copepodes.obs-banyuls.fr/en> [Accessed May 04 2021].

Calocalanus pavoninus Farran, 1936 (Size: female: 0.60–0.97 mm; male, 0.50–0.60 mm)



Pl. 26



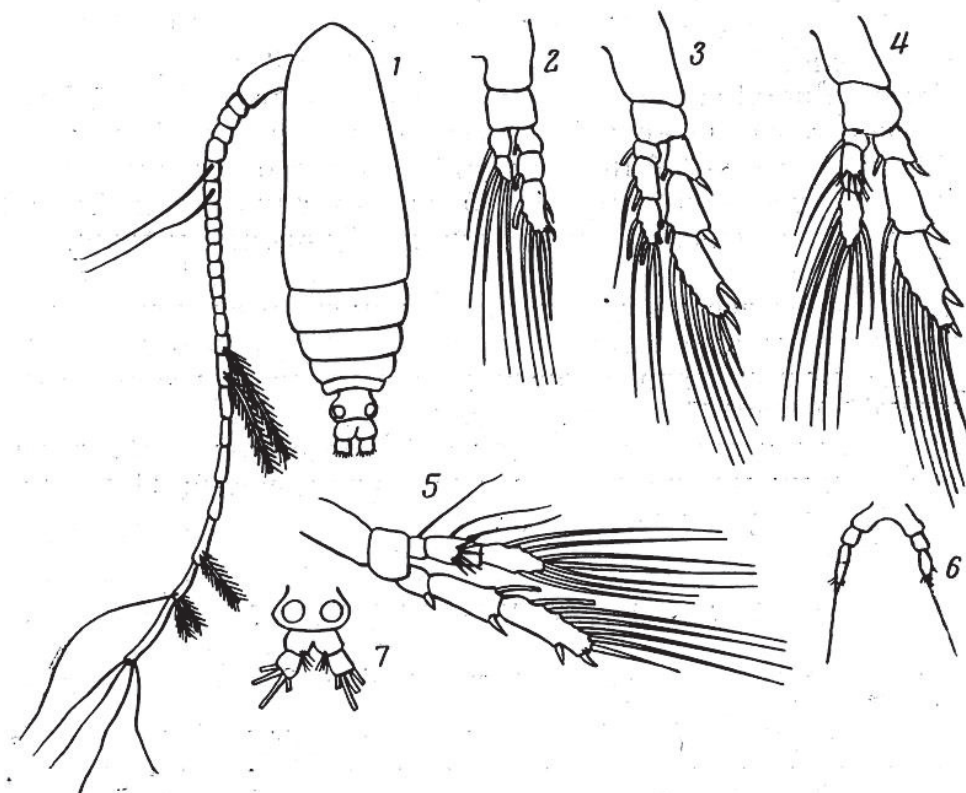
Pl. 27

Calocalanus pavoninus Farran, 1936

Corral Estrada, 1970: pl. 26. *Calocalanus pavoninus* Farran, 1936, Female (from Canary Island). 1. habitus (dorsal); 2. antennule, distal segments; 3. leg 1; 4. leg 2; 5. leg 3 endopod; 6. leg 4; 7. leg 5; 8. urosome with spermatophore (lateral). Pl. 27. Male. 1. habitus (dorsal); 2. posterior prosome & urosome (dorsal); 3. leg 1; 4. leg 2; 5. leg 3; 6. leg 4 endopod; 7. leg 5 (posterior).

Adapted from Razouls C., de Bovée F., Kouwenberg J. and Desreumaux N., 2005–2020. Diversity and Geographic Distribution of Marine Planktonic Copepods. Sorbonne University, CNRS. Available at <http://copepodes.obs-banyuls.fr/en>[Accessed May 04 2021].

Calocalanus plumatus Shmeleva, 1965 (Size: female: 0.53–0.61 mm; male, unknown)

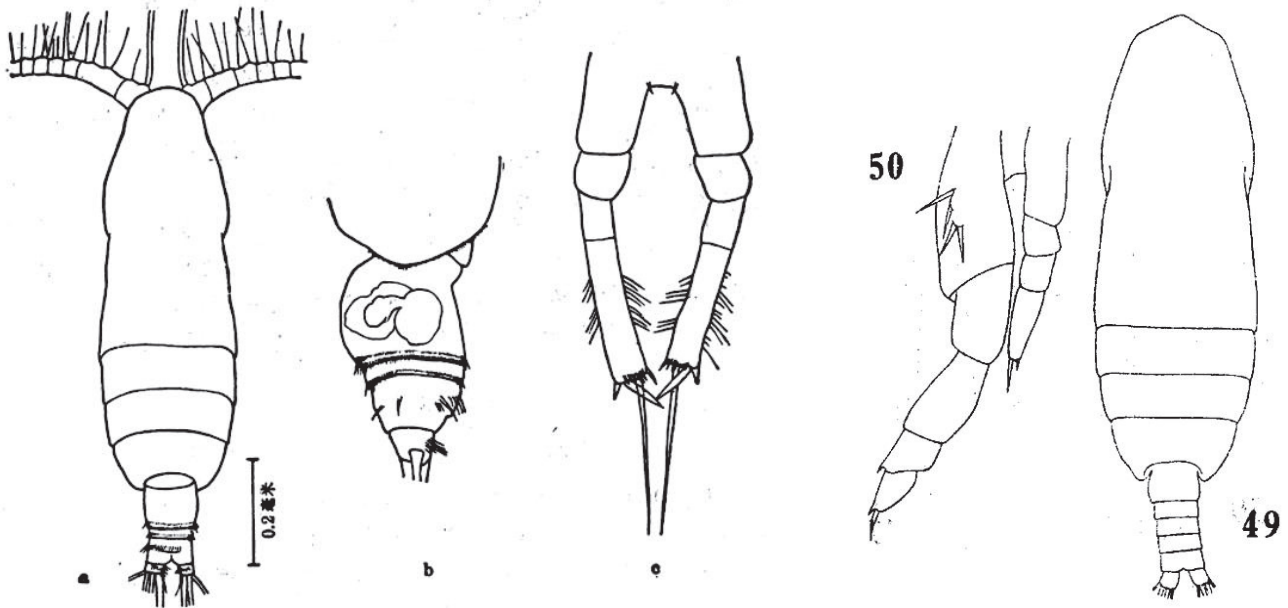


Calocalanus plumatus Shmeleva, 1965

Shmeleva, 1967: fig. 4. *Calocalanus plumatus* Shmeleva, 1965, Female (from Ionian Sea). 1. habitus (dorsal); 2–6. legs 1–5; 7. urosome (dorsal).

Adapted from Razouls C., de Bovée F., Kouwenberg J. and Desreumaux N., 2005–2020. Diversity and Geographic Distribution of Marine Planktonic Copepods. Sorbonne University, CNRS. Available at <http://copepodes.obs-banyuls.fr/en> [Accessed May 04 2021].

Calocalanus plumulosus (Claus, 1863) (Size: female: 0.87–1.30 mm; male, 0.65–0.90 mm)



Zheng et al. 1982

Calocalanus plumulosus (Claus, 1863)

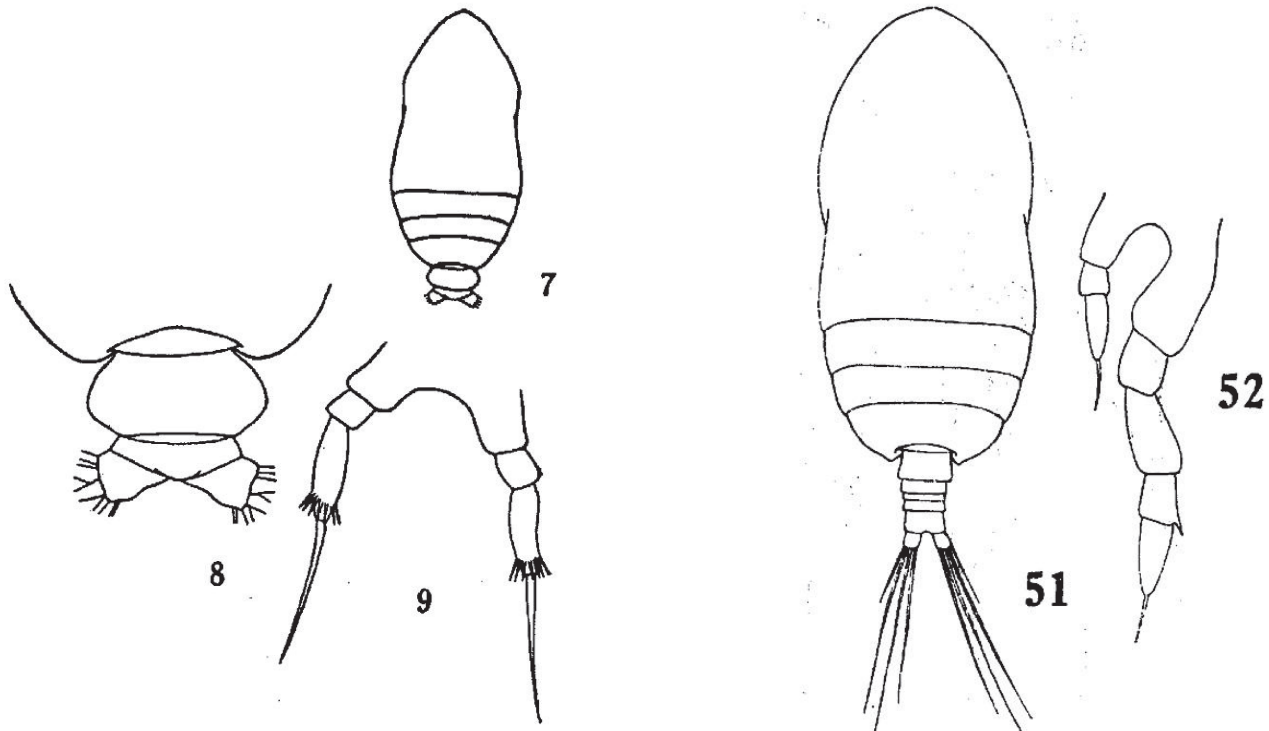
Chen & Zhang, 1974

Zheng et al. 1982: fig. 12. *Calocalanus plumulosus* (Claus, 1863), Female. a. habitus (dorsal); b. posterior prosome & urosome (lateral); c. leg 5.

Chen & Zhang, 1974. *Calocalanus plumulosus* (Claus, 1863), Male (from East China Sea). fig. 49. habitus (dorsal l); 50. leg 5 (posterior).

Adapted from Razouls C., de Bovée F., Kouwenberg J. and Desreumaux N., 2005–2020. Diversity and Geographic Distribution of Marine Planktonic Copepods. Sorbonne University, CNRS. Available at <http://copepodes.obs-banyuls.fr/en> [Accessed May 04 2021].

Calocalanus styliremis Giesbrecht, 1888 (Size: female: 0.50–0.95 mm; male, 0.45–0.60 mm)



Chen & Zhang, 1965

Calocalanus styliremis Giesbrecht, 1888

Chen & Zhang, 1974

Chen & Zhang, 1965: pl. 10. *Calocalanus styliremis* Giesbrecht, 1888, Female (from East China Sea). 7. Habitus (dorsal); 8. Urosome (dorsal); 9. Leg 5 (posterior).

Chen & Zhang, 1974: pl. 5. *Calocalanus styliremis* Giesbrecht, 1888, Male (from South China Sea). 51. Habitus (dorsal); 52. Leg 5 (anterior).

Adapted from Razouls C., de Bovée F., Kouwenberg J. and Desreumaux N., 2005–2020. Diversity and Geographic Distribution of Marine Planktonic Copepods. Sorbonne University, CNRS. Available at <http://copepodes.obs-banyuls.fr/en>[Accessed May 04 2021].