



Key to the species of Paracalanidae Bestiolina occurring in the China Seas

Chang-tai Shih
National Taiwan Ocean University, ctshih@mail.ntou.edu.tw

Qing-Chao Chen
South China Sea Institute of Oceanology

Yang-Chi Lan
Fisheries Research Institute

Shih-Hui Hsiao
National Taipei University of Education

Chi-Yu Weng
Institute of Oceanography, National Taiwan University/Ocean Data Bank of the Ministry of National Science and Technology Council, Taiwan

Follow this and additional works at: <https://jmstt.ntou.edu.tw/journal>



Part of the [Fresh Water Studies Commons](#), [Marine Biology Commons](#), [Ocean Engineering Commons](#), [Oceanography Commons](#), and the [Other Oceanography and Atmospheric Sciences and Meteorology Commons](#)

Recommended Citation

Shih, Chang-tai; Chen, Qing-Chao; Lan, Yang-Chi; Hsiao, Shih-Hui; and Weng, Chi-Yu (2022) "Key to the species of Paracalanidae Bestiolina occurring in the China Seas," *Journal of Marine Science and Technology*. Vol. 30: Iss. 5, Article 57.

DOI: 10.51400/2709-6998.2648

Available at: <https://jmstt.ntou.edu.tw/journal/vol30/iss5/57>

This Review-Taxonomic Index is brought to you for free and open access by Journal of Marine Science and Technology. It has been accepted for inclusion in Journal of Marine Science and Technology by an authorized editor of Journal of Marine Science and Technology.

REVIEW-TAXONOMIC INDEX

Key to the Species of Paracalanidae *Bestiolina* Occurring in the China Seas

Chang-tai Shih ^{a,*}, Qing-Chao Chen ^b, Yang-Chi Lan ^c, Shih-Hui Hsiao ^d, Chi-Yu Weng ^e

^a National Taiwan Ocean University, Taiwan

^b South China Sea Institute of Oceanology, China

^c Fisheries Research Institute, Taiwan

^d National Taipei University of Education, Taiwan

^e Institute of Oceanography, National Taiwan University/Ocean Data Bank of the Ministry of National Science and Technology Council, Taiwan

Bestiolina amoyensis(4b/9a/f), *coreana*(4a/9b/f), *similis* (2a/6b/f), *sinica*(f), *zeylonica*(3a/6a/f)

1a	Female	2
1b	Male	5
2a/1a	Leg 4: no spinules on posterior surface of exopod and endopod.....	<i>Bestiolina similis</i>
2b	Leg 4: spinules on posterior surface of endopod	3
3a/2b	Body size: 0.68–0.70 mm. Antennule reaching beyond caudal rami. Leg 4: no spinule on exopod.....	<i>Bestiolina zeylonica</i>
3b	Body size longer than 0.85 mm. Antennule not reaching beyond caudal rami. Leg 4: spinules present on exopod	4
4a/3b	Antennule reaching anal somite. Length ratio of prosoma/urosome: 3.8. Leg 1: tufts of spinules on coxa, basis, exopod and endopod	<i>Bestiolina coreana</i>
4b	Antennule reaching caudal rami. Length ratio of prosoma/urosome: 2.9. Leg 1 without tufts of spinules on coxa, basis, exopod and endopod	<i>Bestiolina amoyensis</i>
5a/1b	Left leg 5, segment 2 length less than 2 times width; segment 4 length less than 4 times width.....	6
5b	Left leg 5, segment 2 length more than 2 times width; segment 4 length more than 4 times width	7
6a/5a	Leg 5 segment 4 longer than segment 3, segment 5 outer distal corner naked. Caudal rami nearly par	<i>Bestiolina zeylonica</i>
6b	Leg 5 segment 4 as long as segment 3, segment 5 outer distal corner with a minute spine. Caudal rami diverged.....	<i>Bestiolina similis</i>
9a/8b	Caudal rami diverged. Leg 5 segment 4 length more than 6 times width	<i>Bestiolina amoyensis</i>
9b	Caudal rami parallel. Leg 5 segment 4 length less than 5 times width.....	<i>Bestiolina coreana</i>

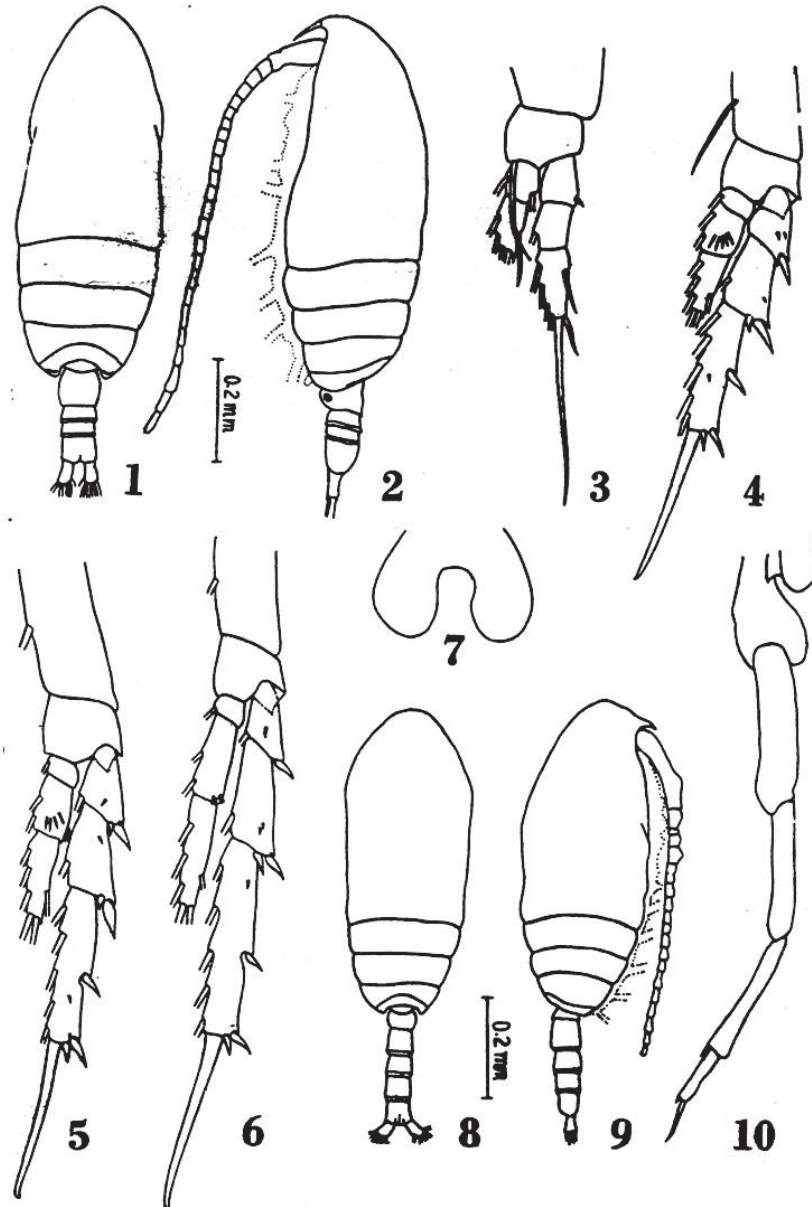
Available online 14 November 2022

* Corresponding author.

E-mail address: ctshih@mail.ntou.edu.tw (C.-t. Shih).



Bestiolina amoyensis (Li & Huang, 1984) (Size: female, 0.85–1.01 mm; male, 0.87–0.92 mm)

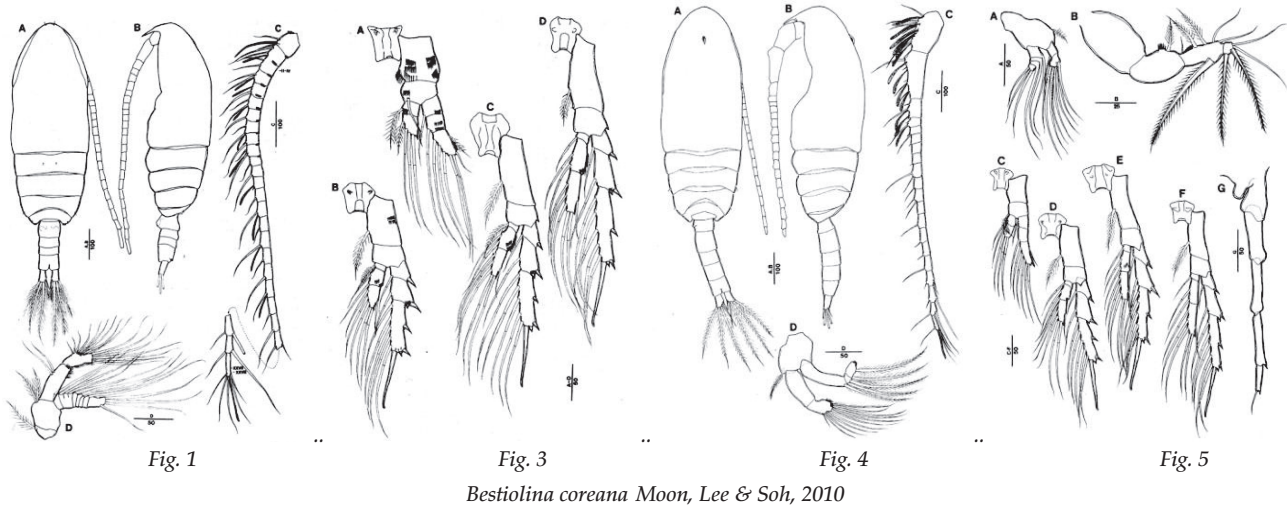


Bestiolina amoyensis (Li & Huang, 1984)

Li & Huang, 1984: figs 1–10. *Bestiolina amoyensis* (Li & Huang, 1984), Female. 1/2. habitus (dorsal/lateral); 3–7. legs 1–5. Male. 8/9, habitus (dorsal/lateral); 10. leg 5 (posterior).

Adapted from Razouls C., de Bovée F., Kouwenberg J. and Desreumaux N., 2005–2020. Diversity and Geographic Distribution of Marine Planktonic Copepods. Sorbonne University, CNRS. Available at <http://copepodes.obs-banyuls.fr/en> [Accessed May 05 2021].

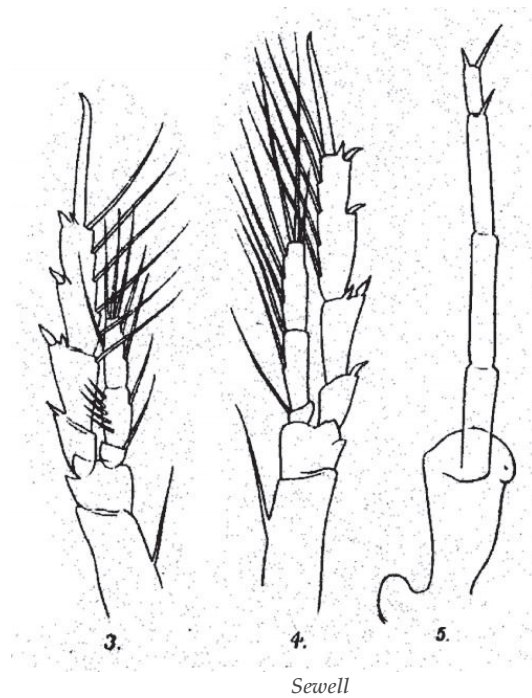
Bestiolina coreana Moon, Lee & Soh, 2010 (Size: female, 0.90–0.95 mm; male, 0.85–0.96 mm)



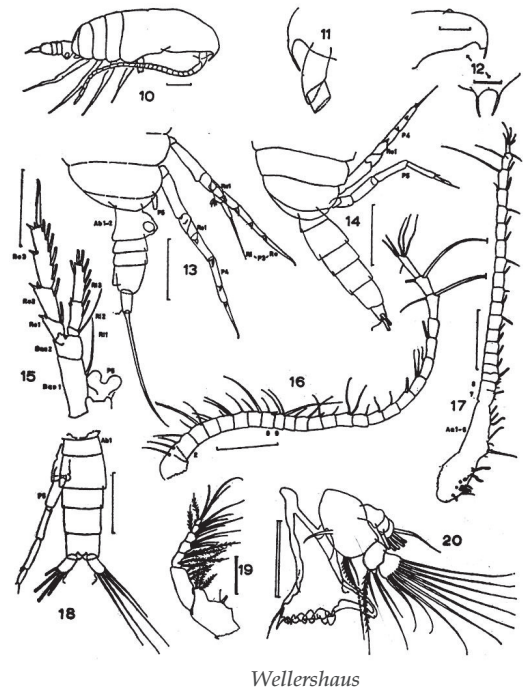
Moon et al. 2010: fig. 1. *Bestiolina coreana* Moon, Lee & Soh, 2010, Female. A/B. habitus (dorsal/lateral); C. antennule; D. antenna. Fig.3. Female. A. leg 1; B. leg 2; C. leg 3; D. leg 4. Fig. 4. Male. A/B. habitus (dorsal/lateral); C. antennule; D. antenna. Fig. 5. Male. A. mandible; B. maxilliped; C–F. legs 1–4; G. leg 5 (anterior).

Adapted from Razouls C., de Bovée F., Kouwenberg J. and Desreumaux N., 2005–2020. Diversity and Geographic Distribution of Marine Planktonic Copepods. Sorbonne University, CNRS. Available at <http://copepodes.obs-banyuls.fr/en> [Accessed May 07 2021]

Bestiolina similis (Sewell, 1914) (Size: female, 0.72–1.00 mm; male, 0.70–0.90 mm)



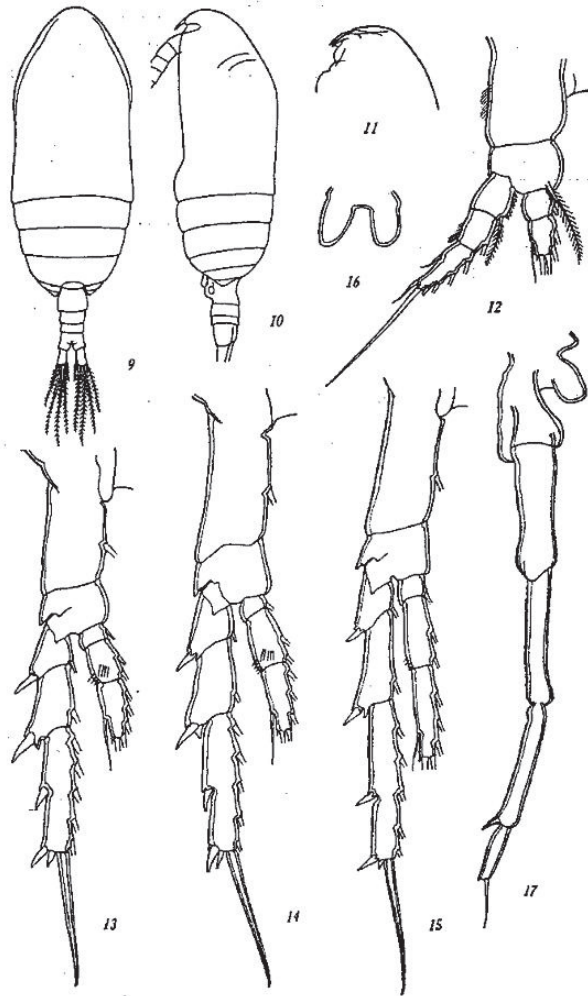
Bestiolina similis (Sewell, 1914)



Sewell, 1914: pl. 17. *Bestiolina similis* (Sewell, 1914), Female. 3. leg 3; 4. leg 4. Male. 5. leg 5 (posterior)
 Wellershaus, 1969: figs. *Bestiolina similis* (Sewell, 1914), Female. 10. habitus (lateral); 11. forehead (lateral); 12. forehead (lateral/ventral). 13. pedigers 3–5 and urosome (lateral); 15. left leg 4 & leg 5; 16. antennule; 19. maxilliped; 20. mandible. Male. 12. forehead (anterior & lateral); 14. pedigers 3–5 and urosome (lateral); 17. antennule; 18. urosome (dorsal).

Adapted from Razouls C., de Bovée F., Kouwenberg J. and Desreumaux N., 2005–2020. Diversity and Geographic Distribution of Marine Planktonic Copepods. Sorbonne University, CNRS. Available at <http://copepodes.obs-banyuls.fr/en> [Accessed May 07 2021].

Bestiolina sinica (Shen & Lee, 1963) (Size: female, 0.97–1.02 mm; male, 0.89–0.92 mm)

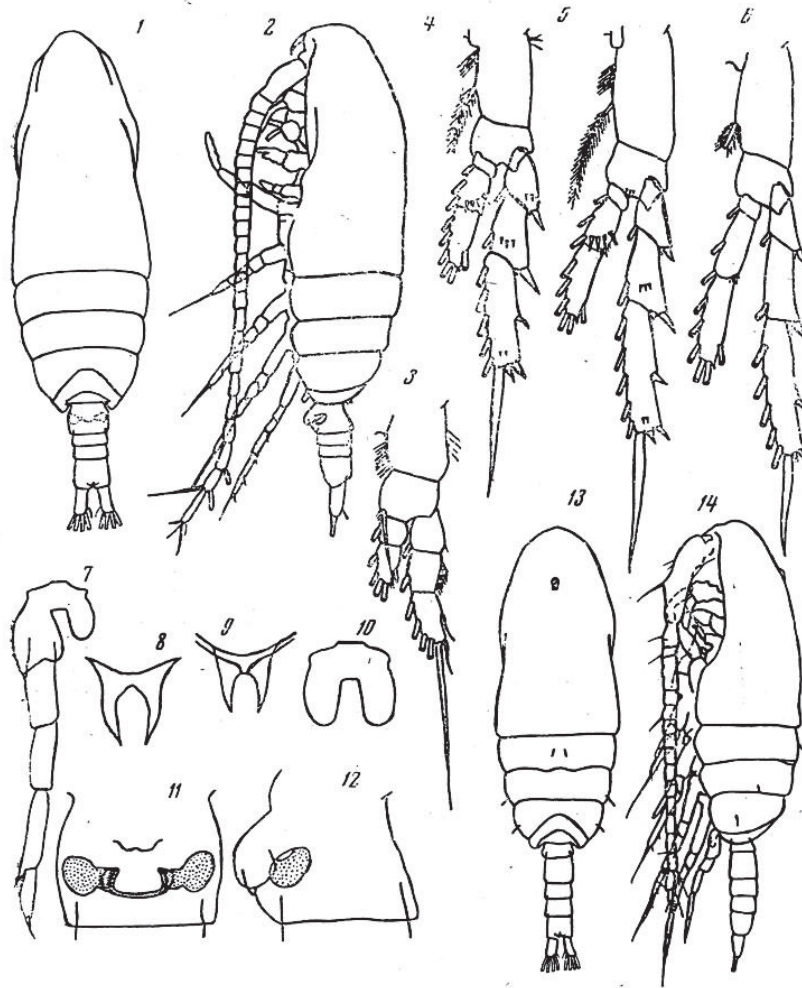


Bestiolina sinica (Shen & Lee, 1963)

Shen & Lee in *Acta zootaxon.sin.*, 1966, 3 (3). Figs.9–17 As *Acrocalanus sinicus*. Female (from Chaikiang estuary): 9/10, habitus (dorsal/lateral); 11, forehead (lateral); 12, leg 1; 13, leg 2; 14, leg 3; 15, leg 4; 16, leg 5. **Nota:** Rostrum bifurcated. Male: 17, leg 5 (posterior). **Nota:** leg 5 asymmetrical, left leg 5-segmented, right leg undeveloped.

Adapted from Razouls C., de Bovée F., Kouwenberg J. and Desreumaux N., 2005–2020. Diversity and Geographic Distribution of Marine Planktonic Copepods. Sorbonne University, CNRS. Available at <http://copepodes.obs-banyuls.fr/en> [Accessed May 07 2021].

Bestiolina zeylonica (Andronov, 1972) (Size: female, 0.65–0.70 mm; male, 0.61 mm)



Bestiolina zeylonica (Andronov, 1972)

Andronov, 1972: figs. *Bestiolina zeylonica* (Andronov, 1972), Female. 1/2 habitus (dorsal/lateral); 3–6. legs 1–4; 8/9. rostrum; 10. leg 5; 11/12. genital double-somite (ventral/lateral). Male. 7. leg 5 (posterior); 13/14. habitus (dorsal/lateral).

Adapted from Razouls C., de Bovée F., Kouwenberg J. and Desreumaux N., 2005–2020. Diversity and Geographic Distribution of Marine Planktonic Copepods. Sorbonne University, CNRS. Available at <http://copepodes.obs-banyuls.fr/en> [Accessed May 07 2021].