



Key to the species of Nullosetigeridae Nullosetigera occurring in the China Seas

Chang-tai Shih
National Taiwan Ocean University, ctshih@mail.ntou.edu.tw

Qing-Chao Chen
South China Sea Institute of Oceanology

Yang-Chi Lan
Fisheries Research Institute

Shih-Hui Hsiao
National Taipei University of Education

Chi-Yu Weng
Institute of Oceanography, National Taiwan University/Ocean Data Bank of the Ministry of National Science and Technology Council, Taiwan

Follow this and additional works at: <https://jmstt.ntou.edu.tw/journal>



Part of the [Fresh Water Studies Commons](#), [Marine Biology Commons](#), [Ocean Engineering Commons](#), [Oceanography Commons](#), and the [Other Oceanography and Atmospheric Sciences and Meteorology Commons](#)

Recommended Citation

Shih, Chang-tai; Chen, Qing-Chao; Lan, Yang-Chi; Hsiao, Shih-Hui; and Weng, Chi-Yu (2022) "Key to the species of Nullosetigeridae Nullosetigera occurring in the China Seas," *Journal of Marine Science and Technology*: Vol. 30: Iss. 5, Article 55.

DOI: 10.51400/2709-6998.2646

Available at: <https://jmstt.ntou.edu.tw/journal/vol30/iss5/55>

This Review-Taxonomic Index is brought to you for free and open access by Journal of Marine Science and Technology. It has been accepted for inclusion in Journal of Marine Science and Technology by an authorized editor of Journal of Marine Science and Technology.

REVIEW-TAXONOMIC INDEX

Key to the Species of Nullosetigeridae *Nullosetigera* Occurring in the China Seas

Chang-tai Shih ^{a,*}, Qing-Chao Chen ^b, Yang-Chi Lan ^c, Shih-Hui Hsiao ^d, Chi-Yu Weng ^e

^a National Taiwan Ocean University, Taiwan

^b South China Sea Institute of Oceanology, China

^c Fisheries Research Institute, Taiwan

^d National Taipei University of Education, Taiwan

^e Institute of Oceanography, National Taiwan University/Ocean Data Bank of the Ministry of National Science and Technology Council, Taiwan

Nullosetigera aequalis(4b/f), *auctiseta*(2a/7a/f), *bidentata*(6a/8a/f), *helgae*(5a/11a/f), *impar*(4a/10a/f), *mutata*(6b/f) (male unknown)

1a	Female	2
1b	Male	7
2a/1a	Leg 4: coxus with inner seta. Maxillule: coxal endite with 2 nearly equal setae. Maxilliped: endopod segment 5 with 3 setae	<i>Nullosetigera auctiseta</i>
2b	Leg 4 without coxal inner seta	3
3a/2a	Genital double-somite symmetrical	4
3b	Genital double-somite asymmetrical	5
4a/3a	Genital double-somite: protruding semicircularly on both sides; width 1.3 times length	<i>Nullosetigera impar</i>
4b	Genital double -somite; slightly convex on both sides; width equal to length	<i>Nullosetigera aequalis</i>
5a/3b	Last pedigerous somite symmetrical. Genital double somite protruding on right side	<i>Nullosetigera helgae</i>
5b	Last pedigerous somite asymmetrical	6
6a/5b	Posterolateral corners of prosome: laterally modified into apically truncate lobes; end of right corner reaching distal margin of genital double-somite	<i>Nullosetigera bidentata</i>
6b	Posterolateral corners of prosome with tiny spines, end of right corner reaching midlength of genital double-somite	<i>Nullosetigera mutata</i>
7a/1b	Leg 4: coxus with inner seta. Leg 5 with tapering process on right inner side of intercoxal sclerite-coxae compound segment. Maxillule: coxal endite with 2 nearly equal setae. Maxilliped: 2 setae on endopod segment 5	<i>Nullosetigera auctiseta</i>
7b	Leg 4: coxus without inner seta. Leg 5 without process on intercoxal sclerite-coxae compound segment	8
8a/7b	Right leg 5 exopod segment 2 inner distal end extended and reaching the end of exopod segment 3	<i>Nullosetigera bidentata</i>
8b	Right leg exopod structurally different	9
9a/8a	Left leg 5 exopod segment 3 straight and exceeding distal end of distal tooth of exopod segment 2	<i>Nullosetigera impar</i>
9b	Left leg 5 exopod segment 3 hooked	10
10a/9b	Left leg 5: distal tooth of exopod segment 2 length 4 times width; segment 3 making an abrupt bent at proximal end	<i>Nullosetigera helgae</i>
10b	Left leg 5: distal tooth of exopod segment 2 length twice width; segment 3 not making an abrupt bent at proximal end	<i>Nullosetigera aqualis</i>

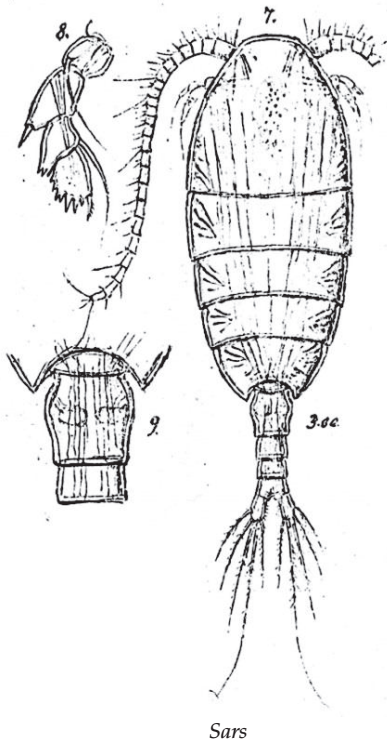
Available online 14 November 2022

* Corresponding author.

E-mail address: ctshih@mail.ntou.edu.tw (C.-t. Shih).

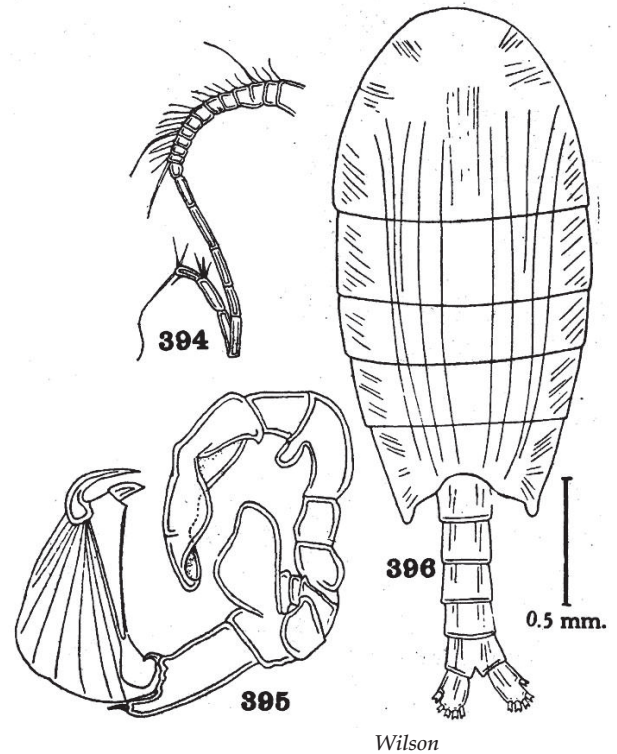


Nullosetigera aequalis (G.O. Sars, 1920) (Size: female, 3.00 mm; male, 2.90 mm)



Sars

Nullosetigera aequalis (G.O. Sars, 1920)



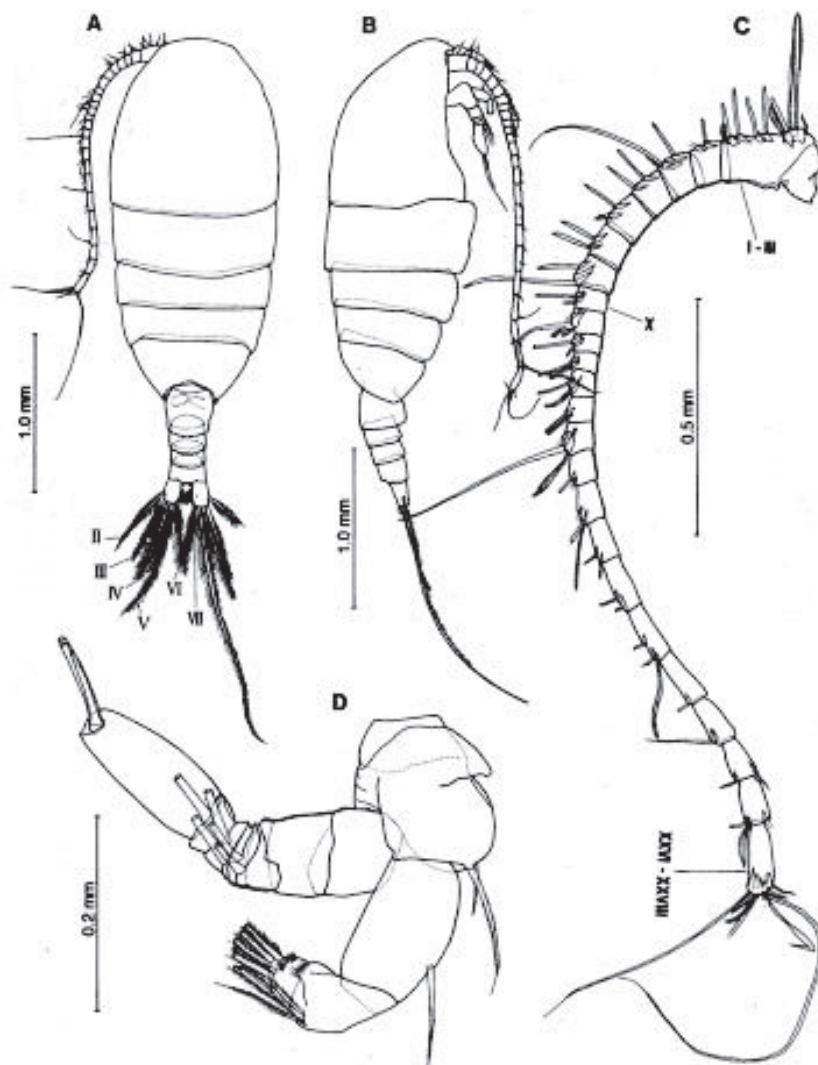
Wilson

Sars, 1924: pl.124. *Nullosetigera aequalis* (G.O. Sars, 1920), Female. 7. habitus (dorsal); 8. leg 5; 9. genital double-somite and adjacent segments.

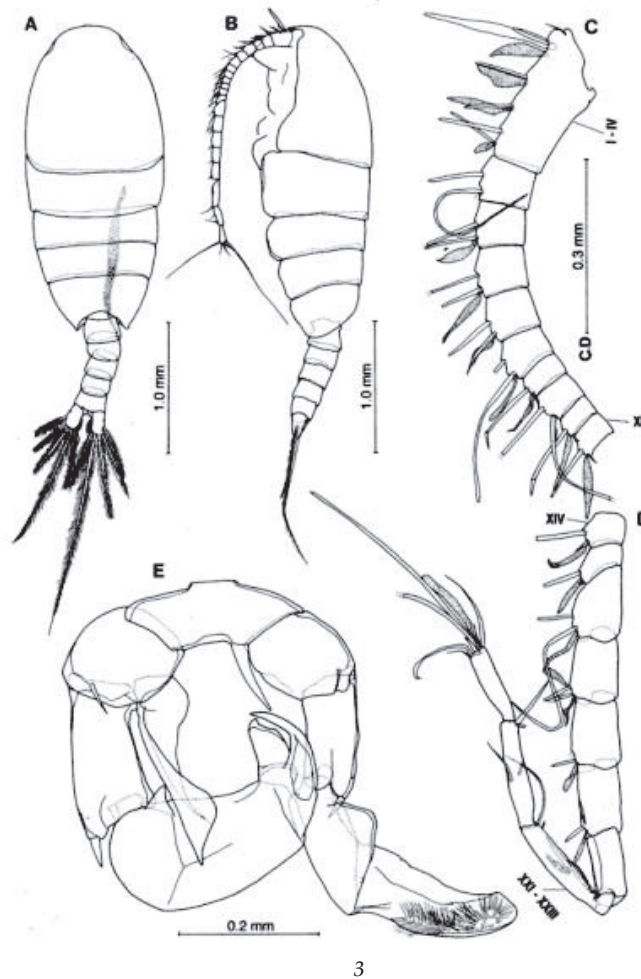
Wilson, 1950: pl.27. *Nullosetigera aequalis* (G.O. Sars, 1920), Male. 394. left antennule; 395. Leg 5; 396. habitus (dorsal).

Adapted from Razouls C., de Bovée F., Kouwenberg J. and Desreumaux N., 2005–2020. Diversity and Geographic Distribution of Marine Planktonic Copepods. Sorbonne University, CNRS. Available at <http://copepodes.obs-banyuls.fr/en> [Accessed May 07, 2021].

Nullosetigera auctiseta Soh, Ohtsuka, Imabayashi & Suh, 1999 (Size: female, 2.81–3.44 mm; male, 3.06–3.16 mm)







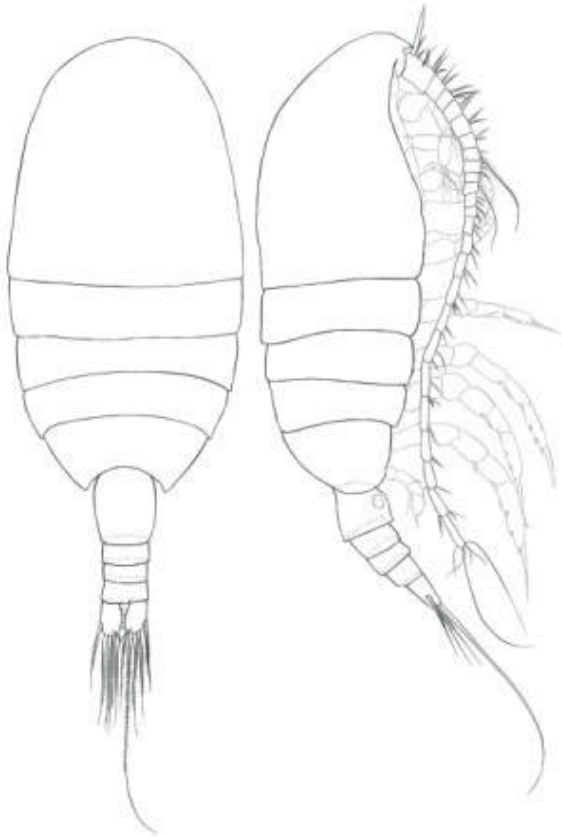
3

Nullosetigera auctiseta Soh, Ohtsuka,
Imabayashi & Suh, 1999

Soh et al., 1999: Fig. 1. *Nullosetigera auctiseta* Soh, Ohtsuka, Imabayashi & Suh, 1999, Female. A/B habitus (dorsal.lateral); C. left antennule; D. Left antenna. Fig. 2. (Female) A. Left mandible; B. Left maxillule; C. left maxilla; D. Left maxilliped (setae on endopod segment 6 indicated by letters b-d). Fig. 3, Male. A/B. Habitus (dorsal/lateral); C. left antennule, segments 1–13; D. Left antennule segments 14–28; E. Leg 5 (posterior).

Adapted from Razouls C., de Bovée F., Kouwenberg J. and Desreumaux N., 2005–2020. Diversity and Geographic Distribution of Marine Planktonic Copepods. Sorbonne University, CNRS. Available at <http://copepodes.obs-banyuls.fr/en> [Accessed May 07, 2021].

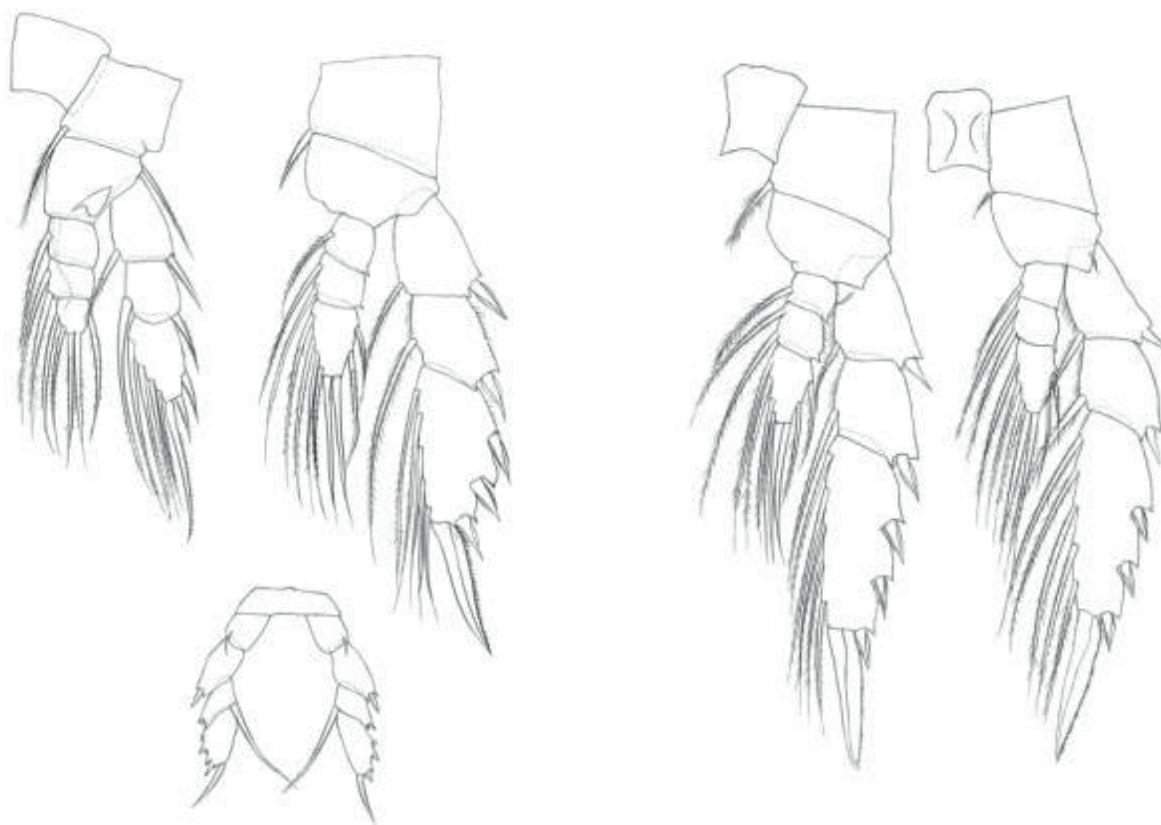
Nullosetigera auctiseta Soh, Ohtsuka, Imabayashi & Suh, 1999



Habitus (Female)



Mouth parts



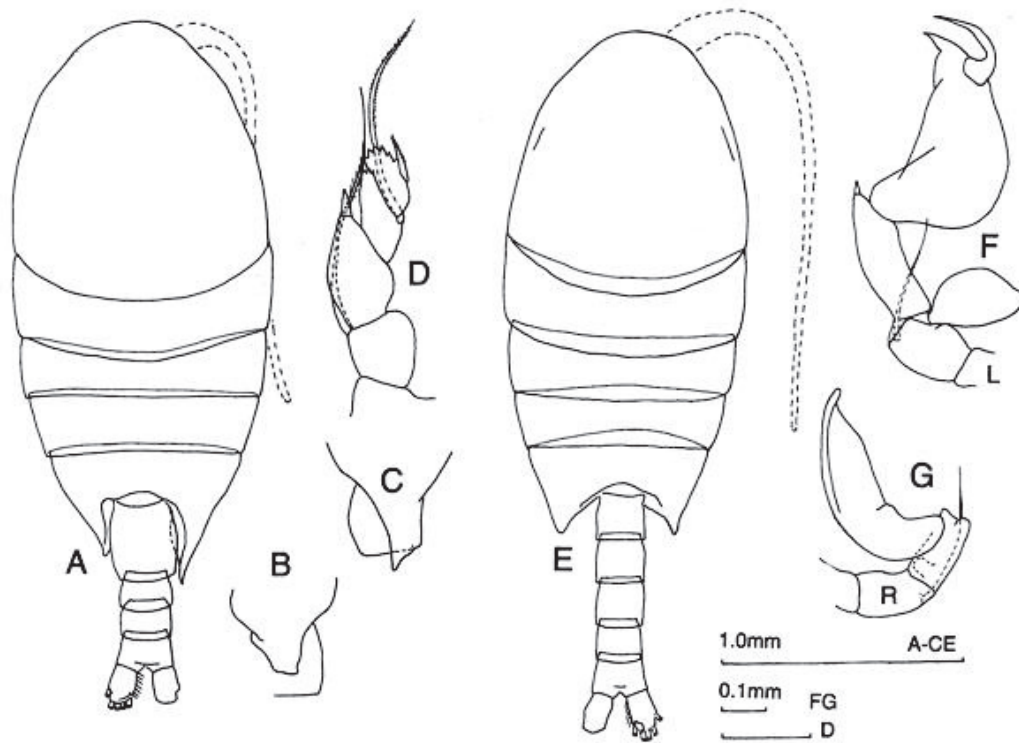
Legs 1, 2, 5

Legs 3, 4

Nullosetigera auctiseta Soh, Ohtsuka, Imabayashi & Suh, 1999

Original. *Nullosetigera auctiseta* Soh, Ohtsuka, Imabayashi & Suh, 1999, Female. 2.72 mm, South China Sea: 8°33'N, 115°41'8°40'N, 2000 m. a/b habitus (dorsal/lateral); Mouth parts. c.antenna; d. mandible (gnathobase omitted); e. maxillule; f. maxilla; g. maxilliped; Legs 1, 2, 5/Legs 3, 4. h. leg 1; i. leg 2; j. leg 3; k. leg 4; l. leg 5.

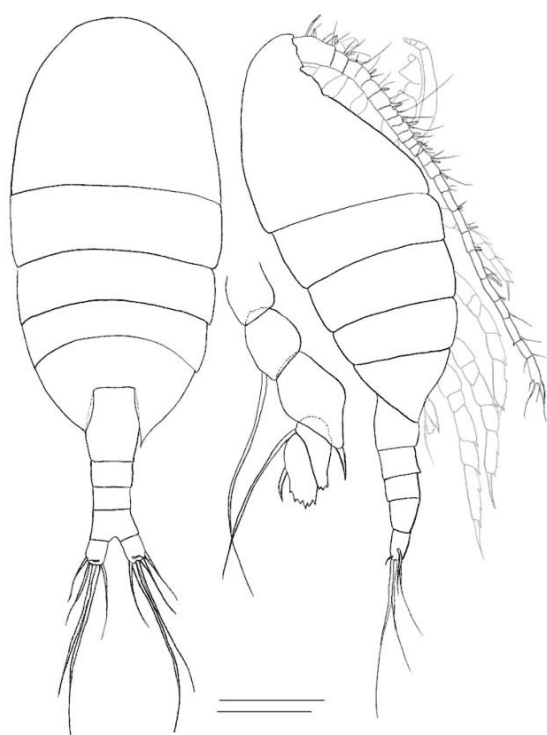
Nullosetigera bidentata (Brady, 1883) (Size: female, 2.00–3.60 mm; male, 2.00–3.00 mm)



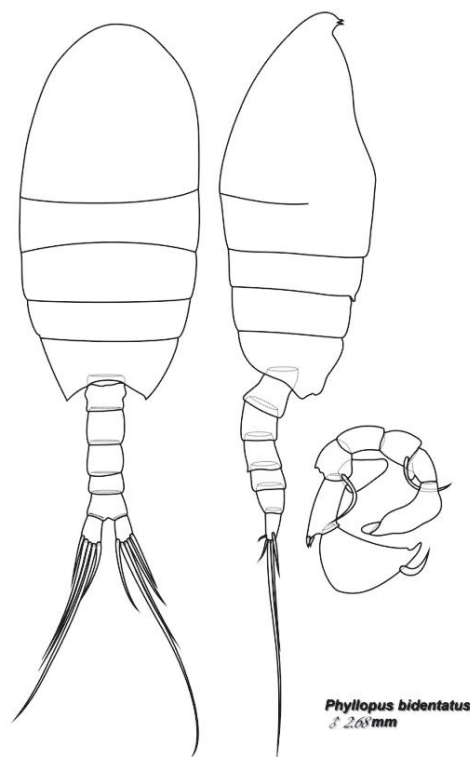
Nullosetigera bidentata (Brady, 1883)

Bradford-Grieve, 1999: Fig. 89. *Nullosetigera bidentata* (Brady, 1883), Female: A. habitus (dorsal); B/C. left/right posterior border of pediger 4 + 5; D. leg 5. Male: E. habitus (dorsal); F/G. left/right leg 5.

Adapted from Razouls C., de Bovée F., Kouwenberg J. and Desreumaux N., 2005–2020. Diversity and Geographic Distribution of Marine Planktonic Copepods. Sorbonne University, CNRS. Available at <http://copepodes.obs-banyuls.fr/en> [Accessed May 07, 2021].

Nullosetigera bidentata (Brady, 1883)

Female



Male

Nullosetigera bidentata (Brady, 1883)

Original. *Nullosetigera bidentata* (Brady, 1883), Female, 2.56 mm South China Sea (8°33'N, 115°41'E, 1000 m): a/b. habitus (dorsal/lateral); c. right leg 5 (posterior). Scales: a, b = 0.5 mm; c = 0.2 mm. Male, 2.68 mm, South China Sea (7°42'N, 118°39'E, 2000 m): c/d. habitus (dorsal/lateral); e. leg 5 (posterior).

Nullosetigera helgae (Farran, 1908) (Size: female, 2.13–2.90 mm; male, 2.03–2.80 mm)

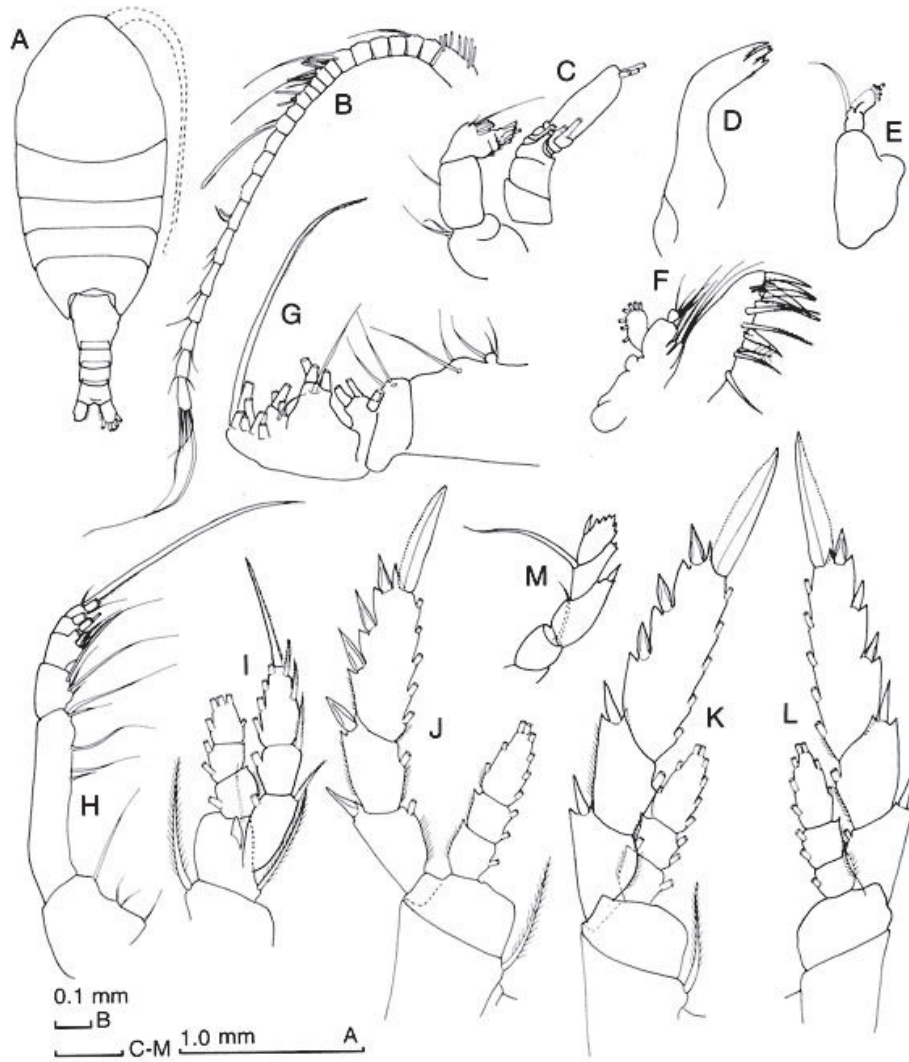


Fig. 87

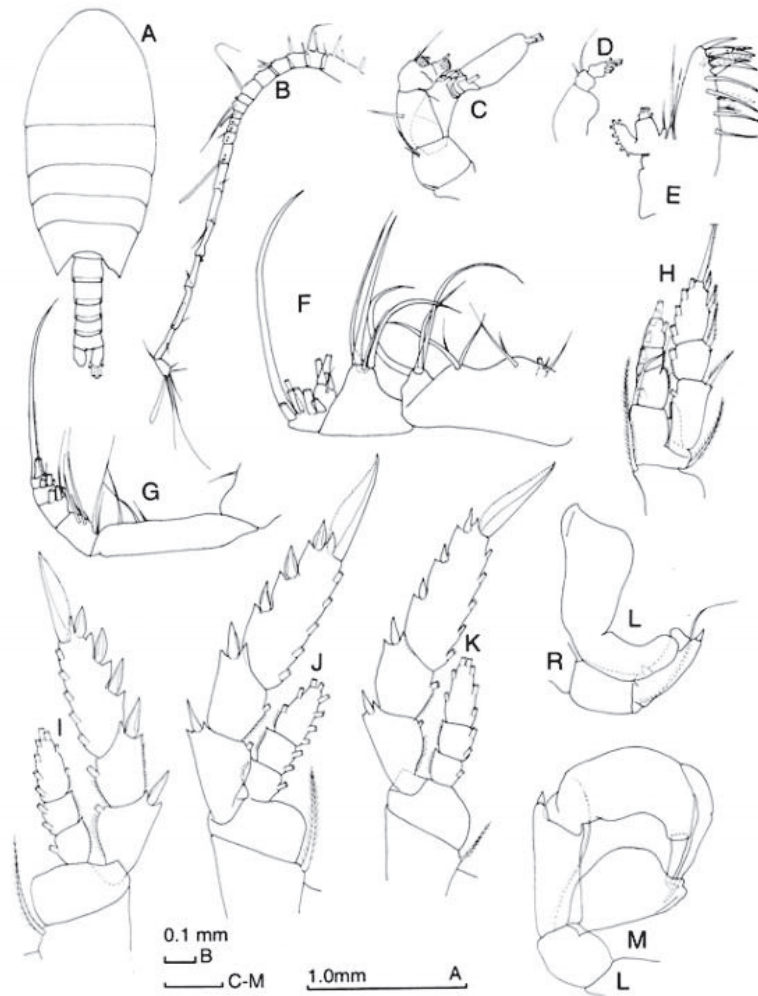


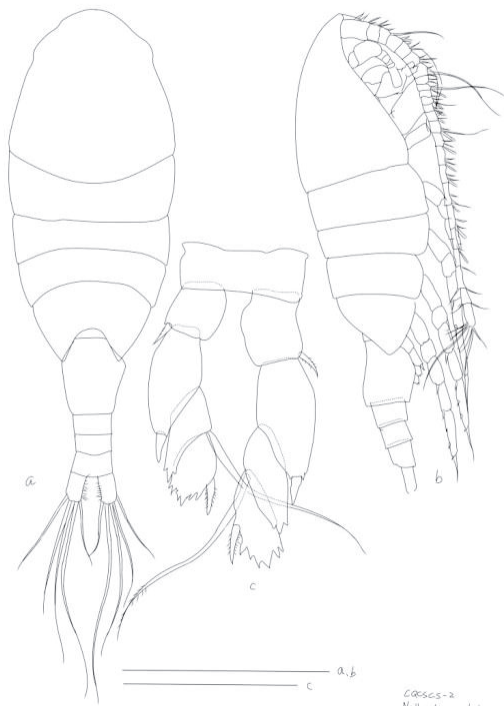
Fig. 88

Nullosetigera helgae (Farran, 1908)

Bradford-Grieve, 1999: Fig. 87. *Nullosetigera helgae* (Farran, 1908). **Female.** A. habitus (dorsal); B. antennule; C. antenna; D. Mandible gnathobase; E. mandible palp; f. maxillule; G. maxilla; H. maxilliped; I/J/K/L/M. leg 1/2/3/4/5. Fig. 88. **Male.** A. habitus (dorsal); B. left antennule; C. antenna; D. mandibular palp; E. maxillule; F. maxilla; G. maxilliped; H/I/J/K. leg 1/2/3/4; L. right leg 5; M. left leg 5.

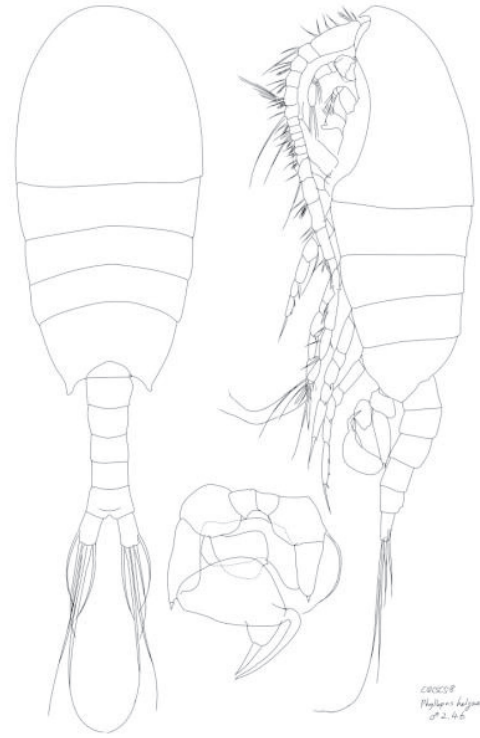
Adapted from Razouls C., de Bovée F., Kouwenberg J. and Desreumaux N., 2005–2020. Diversity and Geographic Distribution of Marine Planktonic Copepods. Sorbonne University, CNRS. Available at <http://copepodes.obs-banyuls.fr/en> [Accessed May 07, 2021].

Nullosetigera helgae (Farran, 1908)



Female

GOESCS-2
Nullosetigera helgae
 ♀ 2.32



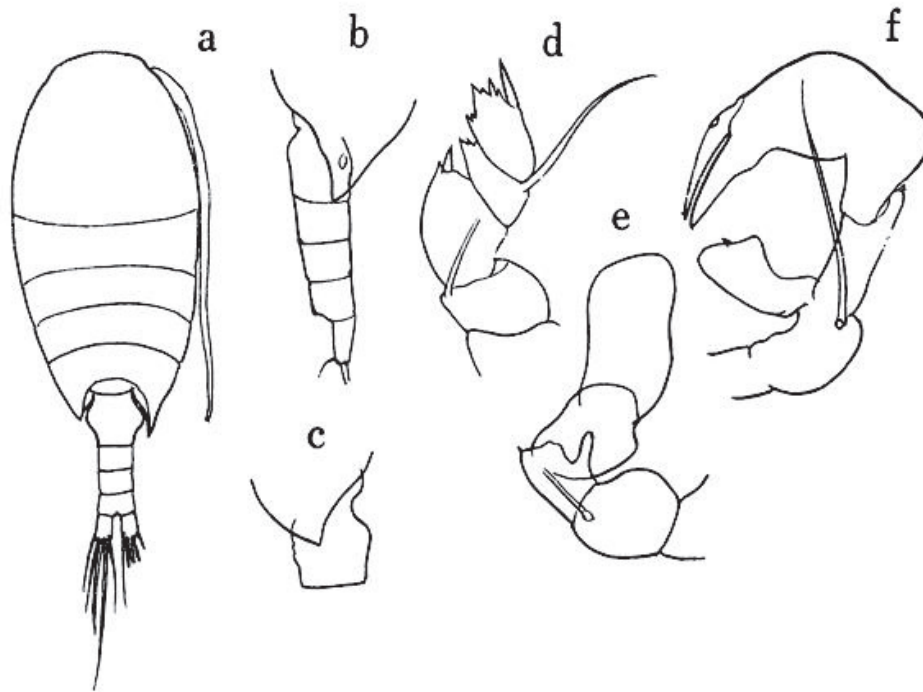
Male

GOESCS
Nullosetigera helgae
 ♂ 2.46

Nullosetigera helgae (Farran, 1908)

Original. *Nullosetigera helgae* (Farran, 1908), Female, 2.32mm, South China Sea: 7°42'N, 118°39'E, 2000 m. Male, 2.46 mm, South China Sea: 9°41'N, 112°32'E.

Nullosetigera impar (Tanaka, 1964) (Size: female, 2.20–3.00 mm; male, 2.28–2.95 mm)



Nullosetigera impar (Tanaka, 1964)

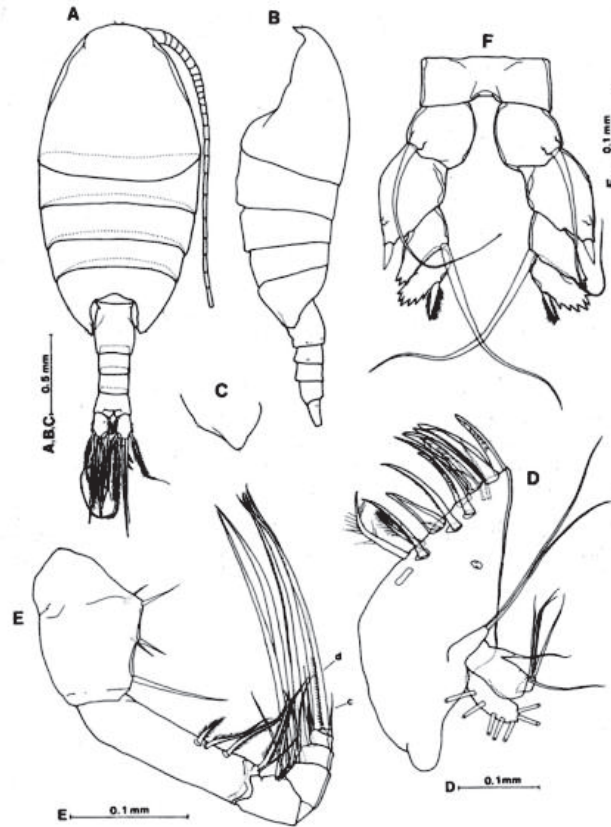
O. Tanaka, 1964. Fig. 224. As *Phyllopus impar*. *Nullosetigera impar* (Tanaka, 1964), Female: a, habitus (dorsal); b, last thoracic segment and urosome (right lateral side); c, last thoracic segment and genital somite (left lateral side); d, leg 5.

Nota: The urosome segments and furca are in the proportional lengths as 35:17:14:18:16 = 100. The furcal rami 1.6 times as long as wide. Male: e, right leg 5; f, left leg 5.

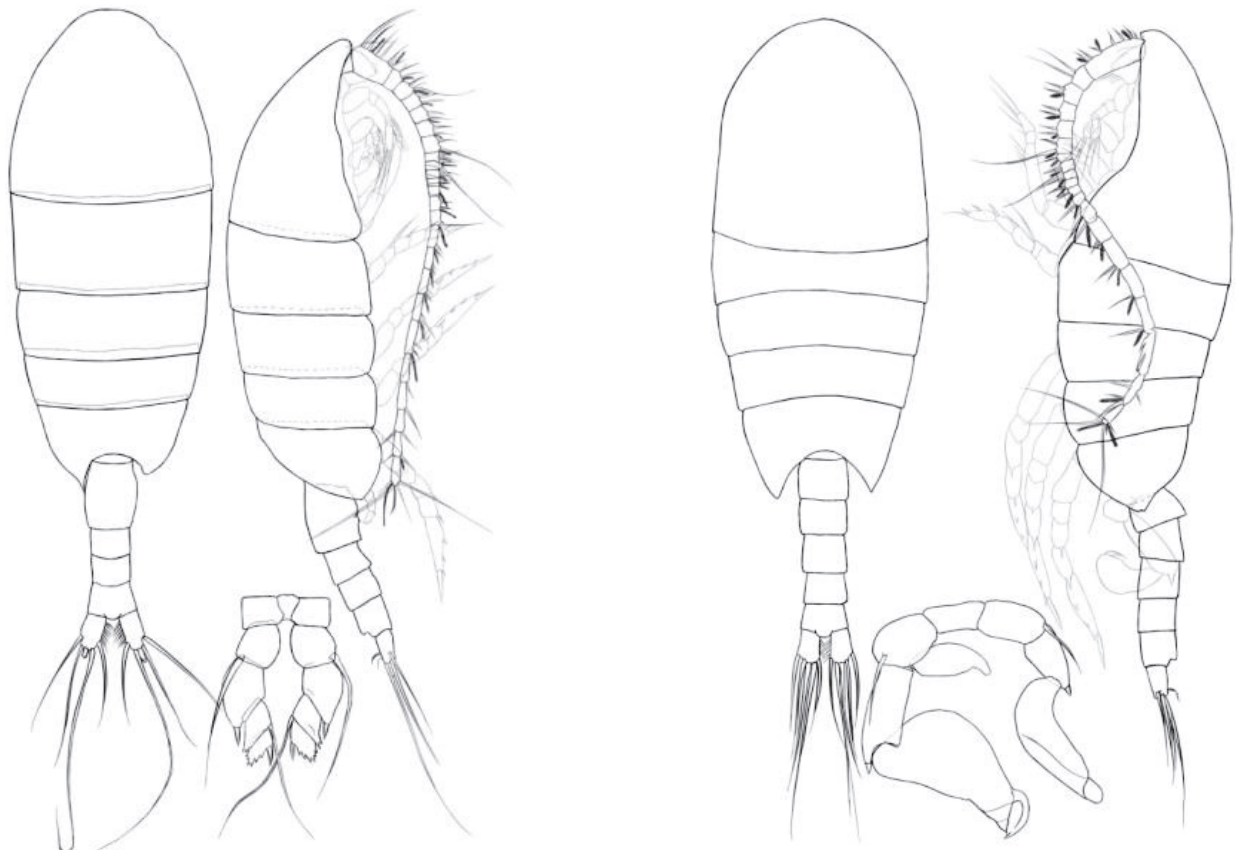
Nota: The last thoracic segment symmetrical, not pointed at the lateral distal margin. A1 extends about to the distal margin of the cephalothorax.

Adapted from Razouls C., de Bovée F., Kouwenberg J. and Desreumaux N., 2005–2020. Diversity and Geographic Distribution of Marine Planktonic Copepods. Sorbonne University, CNRS. Available at <http://copepodes.obs-banyuls.fr/en> [Accessed May 15, 2021].

Nullosetigera mutata (Tanaka, 1964) (Size: female, 2.56–2.69 mm; male, unknown)



Soh et al, 1999



Female (Original)

Nullosetigera mutata (Tanaka, 1964)

Male (Original)

Nullosetigera mutata (Tanaka, 1964)

Soh et al., 1999: Fig. 7. *Nullosetigera mutata* (Tanaka, 1964), Female. A/B, habitus (dorsal/lateral); C, last pediger (right latera); D, maxillule; E, maxilliped (setation elements on 6th endopodal segment indicated by letters c and d); F, leg 5.

Adapted from Razouls C., de Bovée F., Kouwenberg J. and Desreumaux N., 2005–2020. Diversity and Geographic Distribution of Marine Planktonic Copepods. Sorbonne University, CNRS. Available at <http://copepodes.obs-banyuls.fr/en> [Accessed May 07, 2021].

Original. *Nullosetigera mutata* (Tanaka, 1964), Female, 2.80 mm, South China Sea: 9°30'N, 114°08'E, 2000 m. Male, 2.65 mm, South China Sea: 6°46'N, 112°43'E, 2438 m.