



Key to the species of Metridinidae Pleuromamma occurring in the China Seas

Chang-tai Shih
National Taiwan Ocean University, ctshih@mail.ntou.edu.tw

Qing-Chao Chen
South China Sea Institute of Oceanology

Yang-Chi Lan
Fisheries Research Institute

Shih-Hui Hsiao
National Taipei University of Education

Chi-Yu Weng
Institute of Oceanography, National Taiwan University/Ocean Data Bank of the Ministry of National Science and Technology Council, Taiwan

Follow this and additional works at: <https://jmstt.ntou.edu.tw/journal>



Part of the [Fresh Water Studies Commons](#), [Marine Biology Commons](#), [Ocean Engineering Commons](#), [Oceanography Commons](#), and the [Other Oceanography and Atmospheric Sciences and Meteorology Commons](#)

Recommended Citation

Shih, Chang-tai; Chen, Qing-Chao; Lan, Yang-Chi; Hsiao, Shih-Hui; and Weng, Chi-Yu (2022) "Key to the species of Metridinidae Pleuromamma occurring in the China Seas," *Journal of Marine Science and Technology*. Vol. 30: Iss. 5, Article 54.

DOI: 10.51400/2709-6998.2645

Available at: <https://jmstt.ntou.edu.tw/journal/vol30/iss5/54>

This Review-Taxonomic Index is brought to you for free and open access by Journal of Marine Science and Technology. It has been accepted for inclusion in Journal of Marine Science and Technology by an authorized editor of Journal of Marine Science and Technology.

REVIEW-TAXONOMIC INDEX

Key to the Species of Metridinidae *Pleuromamma* Occurring in the China Seas

Chang-tai Shih ^{a,*}, Qing-Chao Chen ^b, Yang-Chi Lan ^c, Shih-Hui Hsiao ^d, Chi-Yu Weng ^e

^a National Taiwan Ocean University, Taiwan

^b South China Sea Institute of Oceanology, China

^c Fisheries Research Institute, Taiwan

^d National Taipei University of Education, Taiwan

^e Institute of Oceanography, National Taiwan University/Ocean Data Bank of the Ministry of National Science and Technology Council, Taiwan

Pleuromamma abdominalis(4b/7b/f)*, *borealis*(5b/9b/f)*, *gracilis*(5a/9a/f)*, *piseki*(f), *quadrungulata*(f), *robusta*(3a/8a/f)*, *scutullata*(f), *xiphias*(4a/7a/f)* (**piseki*, *scutullata*: not included in key)

1a	Female	2
1b	Male	7
2a/1a	Leg 5 4-segmented.....	3
2b	Leg 5 2- or 3-segmented.....	6
3a/2a	Antennule segment 1 with a straight process on frontal margin.....	<i>Pleuromamma robusta</i>
3b	Antennule segment 1 with one or more strong processes on frontal margin bent medially.....	4
4a/3b	Cephalosome with a midfrontal process	<i>Pleuromamma xiphias</i>
4b	Cephalosome without midfrontal process.....	5
5a/4b	Antennule with one strong process on frontal margin bent medially.....	<i>Pleuromamma abdominalis</i>
5b	Antennule with 2 strong processes on frontal margin bent medially.....	<i>Pleuromamma quadrungulata</i>
6a/2b	Leg 5 2-segmented, distal spines about equal in length, less than one-third as long as the segment	<i>Pleuromamma gracilis</i>
6b	Leg 5 3-segmented, distal spines of unequal length, almost as long as one-half of the segment.....	<i>Pleuromamma borealis</i>
7a/1b	Abdomen highly asymmetrical.....	8
7b	Abdomen more or less symmetrical.....	9
8a/7a	Cephalosome with midfrontal process.....	<i>Pleuromamma xiphias</i>
8b	Cephalosome without midfrontal process.....	<i>Pleuromamma abdominalis</i>
9a/7b	Antennule segment 1 with one straight processes on frontal margin. Anal segment with distinct process at lateral distal corner.....	<i>Pleuromamma robusta</i>
9b	Antennule segment 1 with two processes on frontal margin. Lateral distal process of anal segment indistinct	<i>Pleuromamma quadrungulata</i>
11a/9b	Right leg 5 segment 3 inner process with distinct dentition on both margins. Right leg 5 segment 4 massive, nearly square	<i>Pleuromamma gracilis</i>
11b	Right leg 5 segment 3 inner process with indistinct or no dentition. Right leg 5 segment 4 not massive, longer than wide.....	<i>Pleuromamma borealis</i>

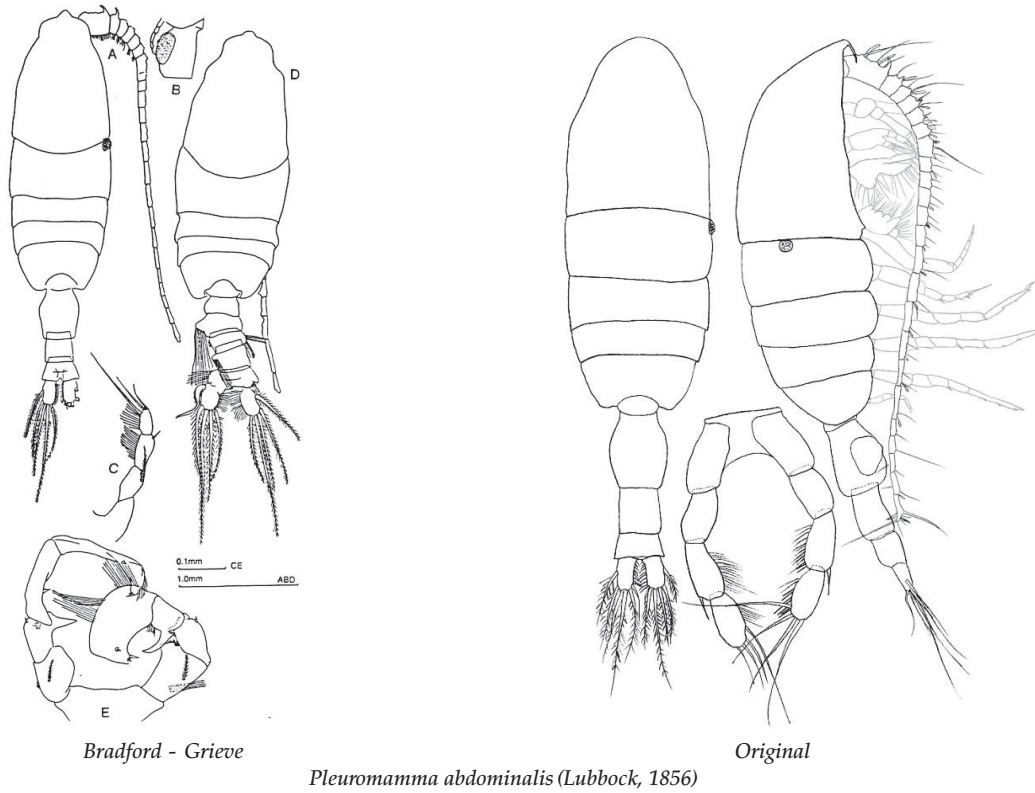
Available online 14 November 2022

* Corresponding author.

E-mail address: ctshih@mail.ntou.edu.tw (C.-t. Shih).



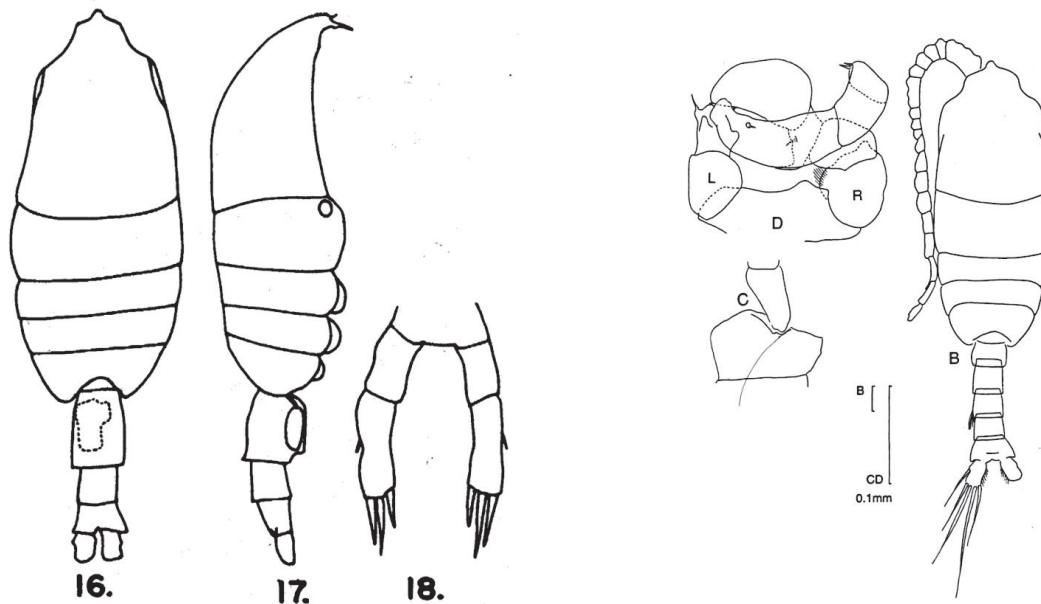
Pleuromamma abdominalis (Lubbock, 1856) (Size: female, 2.09–4.50 mm; male, 2.00–4.30 mm)



Bradford-Grieve, 1999: Fig. 80. *Pleuromamma abdominalis* (Lubbock, 1856), Female. A, habitus (dorsal); B, genital double-somite (lateral); C, leg 5. Male. D, habitus (dorsal); E, leg 5 (anterior).

Adapted from Razouls C., de Bovée F., Kouwenberg J. and Desreumaux N., 2005–2020. Diversity and Geographic Distribution of Marine Planktonic Copepods. Sorbonne University, CNRS. Available at <http://copepodes.obs-banyuls.fr/en> [Accessed May 15, 2021].

Pleuromamma borealis (F. Dahl, 1893) (size: female, 1.67–2.50 mm; male, 1.44–2.25 mm)



Grice

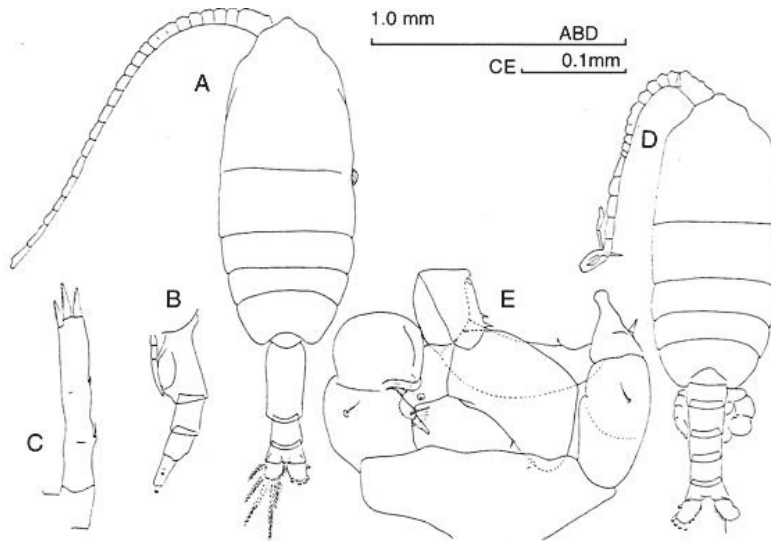
Pleuromamma borealis (F. Dahl, 1893)

Bradford - Grieve

Grice, 1962: pl. 22. *Pleuromamma borealis* (F. Dahl, 1893), Female. 16/17. habitus (dorsal/lateral); 18. leg 5.
Bradford-Grieve 1999: Fig. 81. *Pleuromamma borealis* (F. Dahl, 1893), Female. B. habitus (dorsal); C. left leg 2, basis and endopod segment 1; D. leg 5 (anterior).

Adapted from Razouls C., de Bovée F., Kouwenberg J. and Desreumaux N., 2005–2020. Diversity and Geographic Distribution of Marine Planktonic Copepods. Sorbonne University, CNRS. Available at <http://copepodes.obs-banyuls.fr/en> [Accessed May 19, 2021].

Pleuromamma gracilis Claus, 1863 (size: female, 1.50–2.55 mm; male, female, 1.50–2.25 mm)

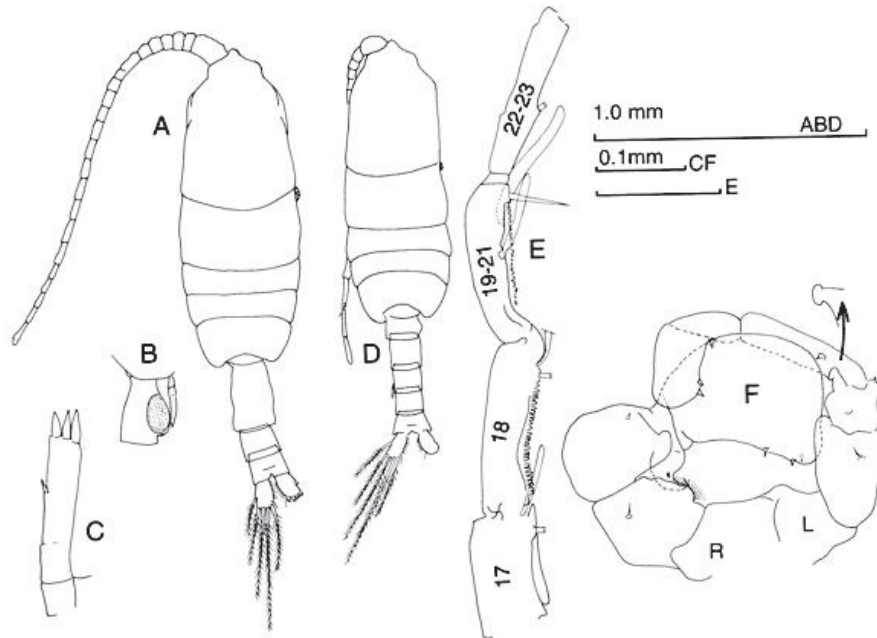


Pleuromamma gracilis Claus, 1863

Bradford-Grieve, 1999: Fig. 82. *Pleuromamma borealis* (F. Dahl, 1893), Female. A. habitus (dorsal); B. urosome (lateral); C. leg 5. Male. D. habitus (dorsal); E. leg 5 (posterior)

Adapted from Razouls C., de Bovée F., Kouwenberg J. and Desreumaux N., 2005–2020. Diversity and Geographic Distribution of Marine Planktonic Copepods. Sorbonne University, CNRS. Available at <http://copepodes.obs-banyuls.fr/en> [Accessed May 17, 2021].

Pleuromamma piseki Farran, 1929 (size, female, 1.70–2.40 mm; male, 1.60–1.96 mm)

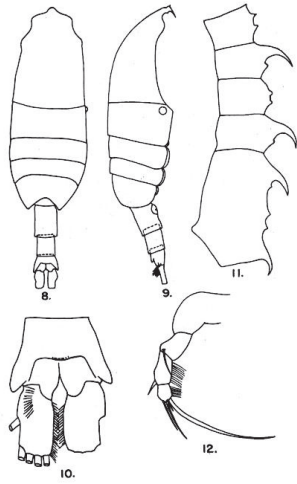


Pleuromamma piseki Farran, 1929

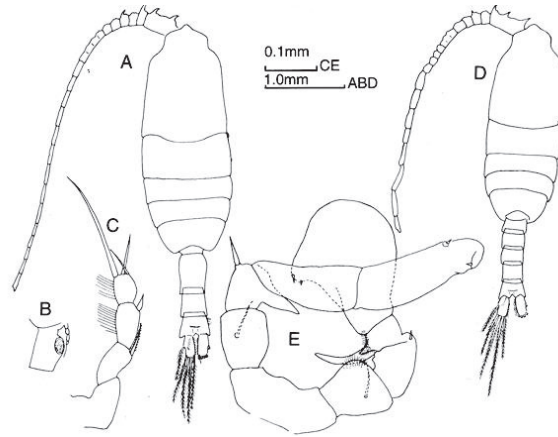
Bradford-Grieve, 1999: Fig. 83. Female. A. habitus (dorsal); B. genital double-somite (lateral); C. leg 5. Male. D. habitus (dorsal); E. genuiculate antennule, segments 17–23; F. leg 5 (posterior).

Adapted from Razouls C., de Bovée F., Kouwenberg J. and Desreumaux N., 2005–2020. Diversity and Geographic Distribution of Marine Planktonic Copepods. Sorbonne University, CNRS. Available at <http://copepodes.obs-banyuls.fr/en> [Accessed May 07, 2021].

Pleuromamma quadrungulata (F. Dahl, 1893) (Size: female, 3.00–5.00 mm; male, 3.06–4.45 mm)



Grice, 1962



Bradford-Grieve, 1999

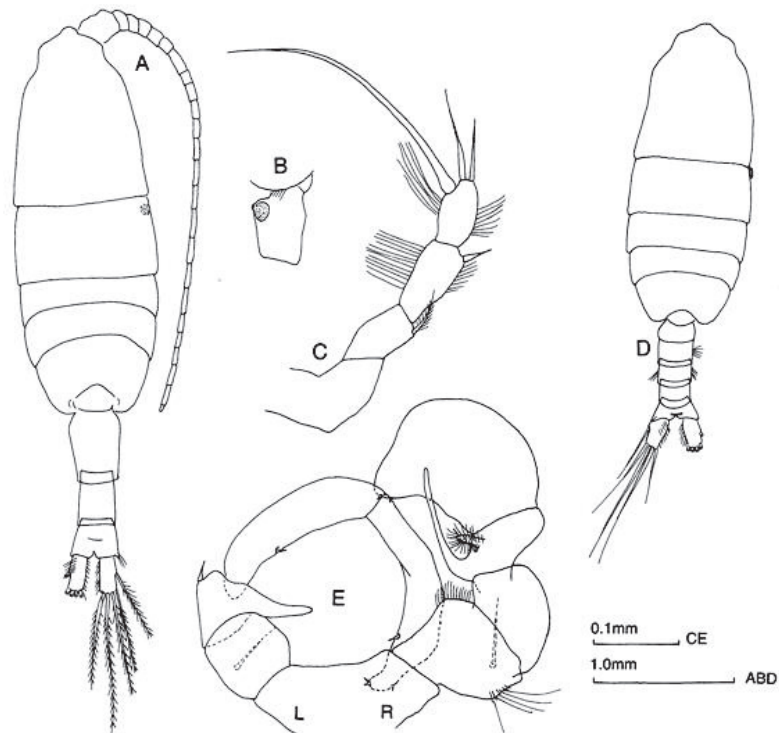
Pleuromamma quadrungulata (F. Dahl, 1893)

Grice, 1962. Pl.22, Fig. 8-12. As *Pleuromamma quadrungulata* f *typica*. Female (from equatorial Pacific): 8–9, habitus (dorsal/lateral); 10, anal somite and caudal rami (dorsal); 11, proximal part of antennule; 12, leg 5.

Bradford-Grieve, 1999. Fig. 84. Female (46°46'S, 164°45'E): A, habitus (dorsal); B, genital double-somite (lateral); C, leg 5. Male: D, habitus (dorsal); E, leg 5.

Adapted from Razouls C., de Bovée F., Kouwenberg J. and Desreumaux N., 2005–2020. Diversity and Geographic Distribution of Marine Planktonic Copepods. Sorbonne University, CNRS. Available at <http://copepodes.obs-banyuls.fr/en> [Accessed May 06, 2021].

Pleuromamma robusta (F. Dahl, 1893) (Size: female, 2.20–4.70 mm; male, 2.10–4.00 mm)



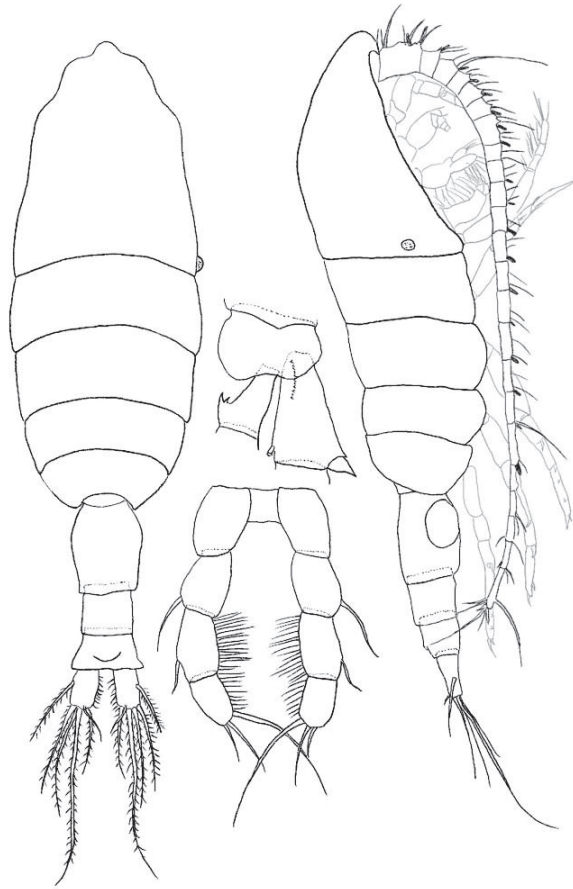
Pleuromamma robusta (F. Dahl, 1893)

Bradford-Grieve, 1999: Fig. 85. Female. A. habitus (dorsal); B. genital double-somite (lateral); C. leg 5. Male. D. habitus (dorsal); E. leg 5 (anterior).

Adapted from Razouls C., de Bovée F., Kouwenberg J. and Desreumaux N., 2005–2021. Diversity and Geographic Distribution of Marine Planktonic Copepods. Sorbonne.

University, CNRS. Available at <http://copepodes.obs-banyuls.fr/en> [Accessed May 07, 2021].

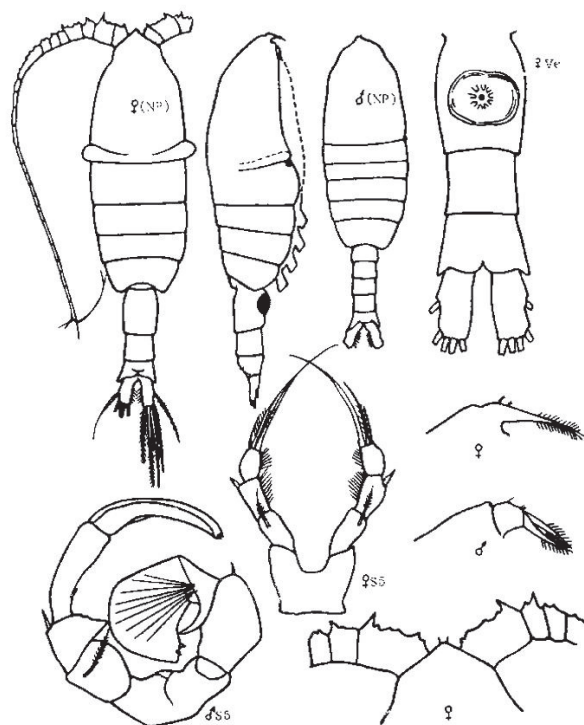
Pleuromamma robusta (F. Dahl, 1893)



Pleuromamma robusta (F. Dahl, 1893)

Original. Female, 2.20 mm, east of Taiwan: a/b. habitus (dorsal/lateral); c. part of leg 2; d. leg 5.

Pleuromamma scutullata Brodsky, 1950 (Size: female, 3.60–4.34 mm; male, 3.10–3.76 mm)

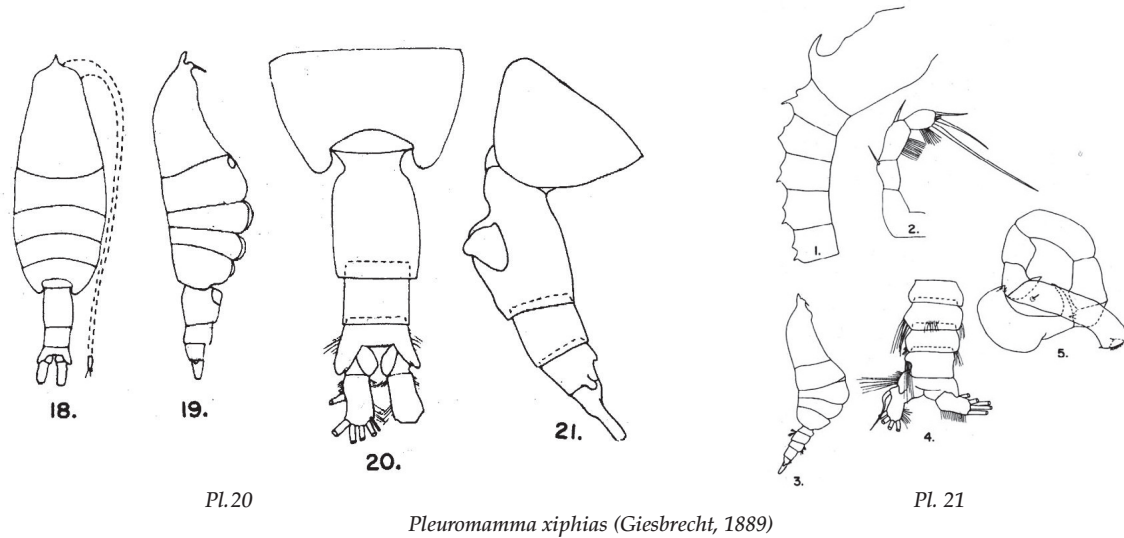


Pleuromamma scutullata Brodsky, 1950

Brodsky, 1950: Fig. 217. Female. habitus (dorsal/lateral); forehead (dorsal); urosome (dorsal); leg 5. Male. habitus (dorsal); leg 5 (anterior).

Adapted from Razouls C., de Bovée F., Kouwenberg J. and Desreumaux N., 2005–2020. Diversity and Geographic Distribution of Marine Planktonic Copepods. Sorbonne University, CNRS. Available at <http://copepodes.obs-banyuls.fr/en> [Accessed May 09, 2021].

Pleuromamma xiphias (Giesbrecht, 1889) (Size: female, 3.25–5.87 mm; male, 3.94–6.42 mm)



Grice, 1962: pl. 20. Female. 18/19. habitus (dorsal/lateral); 20/21 pediger 5 and urosome (dorsal/lateral). Pl. 21. Female. 1. antennule, proximal segments; 2. leg 5. Male. 3. habitus (lateral); 4. urosome (dorsal); 5. leg 5 (posterior).

Adapted from Razouls C., de Bovée F., Kouwenberg J. and Desreumaux N., 2005–2020. Diversity and Geographic Distribution of Marine Planktonic Copepods. Sorbonne University, CNRS. Available at <http://copepodes.obs-banyuls.fr/en> [Accessed May 07, 2021].