



Key to the species of Heterorhabdidae Mesorhabdus occurring in the China Seas

Chang-tai Shih
National Taiwan Ocean University, ctshih@mail.ntou.edu.tw

Qing-Chao Chen
South China Sea Institute of Oceanology

Yang-Chi Lan
Fisheries Research Institute

Shih-Hui Hsiao
National Taipei University of Education

Chi-Yu Weng
Institute of Oceanography, National Taiwan University/Ocean Data Bank of the Ministry of National Science and Technology Council, Taiwan

Follow this and additional works at: <https://jmstt.ntou.edu.tw/journal>



Part of the [Fresh Water Studies Commons](#), [Marine Biology Commons](#), [Ocean Engineering Commons](#), [Oceanography Commons](#), and the [Other Oceanography and Atmospheric Sciences and Meteorology Commons](#)

Recommended Citation

Shih, Chang-tai; Chen, Qing-Chao; Lan, Yang-Chi; Hsiao, Shih-Hui; and Weng, Chi-Yu (2022) "Key to the species of Heterorhabdidae Mesorhabdus occurring in the China Seas," *Journal of Marine Science and Technology*: Vol. 30: Iss. 5, Article 47.

DOI: 10.51400/2709-6998.2638

Available at: <https://jmstt.ntou.edu.tw/journal/vol30/iss5/47>

This Review-Taxonomic Index is brought to you for free and open access by Journal of Marine Science and Technology. It has been accepted for inclusion in Journal of Marine Science and Technology by an authorized editor of Journal of Marine Science and Technology.

REVIEW-TAXONOMIC INDEX

Key to the Species of Heterorhabdidae *Mesorhabdus* Occurring in the China Seas

Chang-tai Shih ^{a,*}, Qing-Chao Chen ^b, Yang-Chi Lan ^c, Shih-Hui Hsiao ^d, Chi-Yu Weng ^e

^a National Taiwan Ocean University, Taiwan

^b South China Sea Institute of Oceanology, China

^c Fisheries Research Institute, Taiwan

^d National Taipei University of Education, Taiwan

^e Institute of Oceanography, National Taiwan University/Ocean Data Bank of the Ministry of National Science and Technology Council, Taiwan

Mesorhabdus angustus(2a/5a/f), *brevicaudatus*(4a/7a/f), *gracilis*(5a/6a/f), *poriphorus*(4b/7b/f)

1a	Female	2
1b	Male	5
2a/1a	Genital double-somite with spinules along posterior margin. Oral cone with high anterior labral lobe . Maxilliped: coxa with 1+2+3 setae.....	<i>Mesorhabdus angustus</i>
2b	Genital double-somite without spinules along posterior margin. Oral cone with low anterior labral lobe. Maxilliped: coxa with either 1+2+2 or 1+1+2 setae.....	3
3a/2b	Maxillule: exopod with 5+4 setae; endopod with 3 setae. Maxilla with 5 setae on proximal coxal endite, 3 setae on distal coxal endite. Maxilliped: coxa with 1+1+2 setae. Dorsally anal somite with 1 pore on each side. Caudal ramus with a large pore close to posterior end.....	<i>Mesorhabdus gracilis</i>
3b	Maxillule: exopod with 6+4 setae, endopod with 4 setae. Maxilla with 6 setae on proximal coxal endite, 2 or 3 setae on distal coxal endite. Maxilliped: coxal endite with 1+2+2 setae. Dorsally caudal ramus without a large pore close to posterior end	4
4a/3b	Dorsally, posterolateral corners of prosome pointing posteriorly. Caudal ramus normally with a pore at middle. Maxilla: 2 nd lobe with 3 setae. Leg 1: lateral margin of exopod segment 1 not conspicuously bulging.....	<i>Mesorhabdus brevicaudatus</i>
4b	Dorsally, posterolateral corners of prosome diverging. Maxilla: distal coxal endite with 2 setae. Leg 1: exopod segment 1 conspicuously bulging laterally. In dorsal view, anal somite with 2 pores on each side and caudal ramus with pores close to anterior end.....	<i>Mesorhabdus poriphorus</i>
5a/1b	Right leg 5: exopod segment 2 with medial projection at proximal end of the segment.....	<i>Mesorhabdus angustus</i>
5b	Right leg 5: exopod segment 2 with medial projection at distal end of the segment	6
6a/5b	Maxillule1: exopod with 5+4 setae, endopod with 3 setae. Dorsally, caudal ramus with a pore close to posterior end.....	<i>Mesorhabdus gracilis</i>
6b	Maxillule: exopod with 6+4 setae, endopod with 4 setae. Dorsally, caudal ramus without pores on posterior end.....	7
7a/6b	Dorsally caudal ramus with a single pore. Maxilla: 3 setae on distal coxal endite.....	<i>Mesorhabdus brevicaudatus</i>
7b	Dorsally caudal ramus with 2 or 3 pores. Maxilla: 2 setae on distal coxal endite	<i>Mesorhabdus poriphorus</i>

Available online 14 November 2022

* Corresponding author.

E-mail address: ctshih@mail.ntou.edu.tw (C.-t. Shih).



Mesorhabdus angustus G.O. Sars, 1907 (Size: female, 5.80-8.75 mm; male, 6.60-8.50 mm)

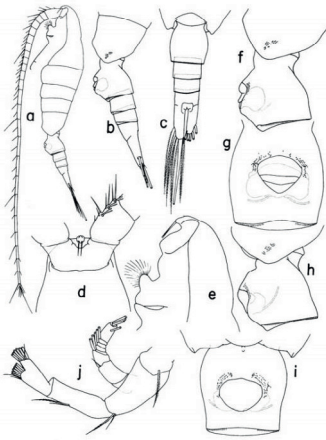


Fig. 7



Fig. 8

Mesorhabdus angustus G.O. Sars, 1907

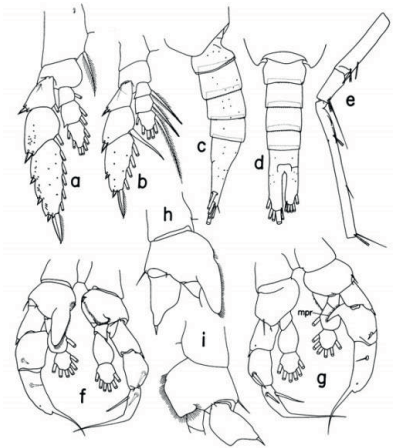


Fig. 9

Park, 2000: fig. 7. *Mesorhabdus angustus* G.O. Sars, 1907, Female. a. habitus (lateral); b/c. urosome (lateral/dorsal); d/e. forehead (ventral/lateral); f/g. genital double-somite with operculum open (lateral); h/i. genital double-somite with operculum closed (lateral/ventral); j. left antenna (posterior). Fig. 8. a. left mandible (posterior); b/c. cutting edge of left/right mandible (posterior); d. left maxillule (posterior); e. praecoxal arthrite of left maxillule (posterior); f. left maxilla (posterior); g. right maxilliped (anterior); h. leg 1 (anterior); i. basis of leg 1 (posterior); j. leg 2 (anterior); k. leg 3 (anterior). Fig. 9. Female. a. leg 4 (anterior); b. leg 5 (anterior). Male. c/d. urosome (lateral/dorsal); e. segments 17-21 of left antennule (ventral); f/g. leg 5 (anterior/posterior); h/i. right/left leg 5 basis (anterior).

Adapted from Razouls C., de Bovée F., Kouwenberg J. and Desreumaux N., 2005-2020. Diversity and Geographic Distribution of Marine Planktonic Copepods. Sorbonne University, CNRS. Available at <http://copepodes.obs-banyuls.fr/en> [Accessed May 08, 2021].

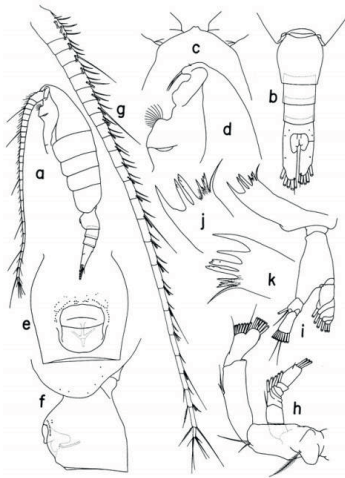
Mesorhabdus brevicaudatus (Wolfenden, 1905) (Size: female, 3.15–4.24 mm; male, 3.37–3.88 mm)

Fig. 10

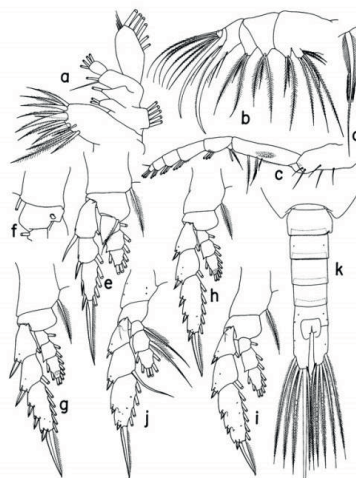


Fig. 11

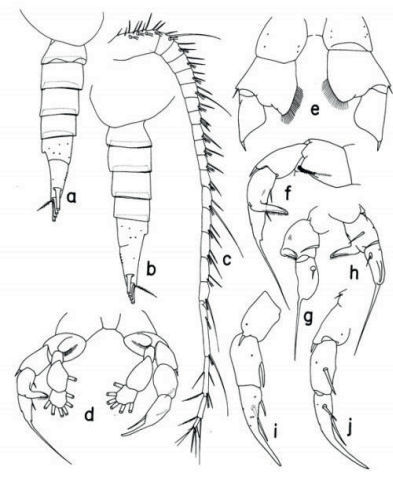
Mesorhabdus brevicaudatus (Wolfenden, 1905)

Fig. 12

Park, 2000: fig. 10. *Mesorhabdus brevicaudatus* (Wolfenden, 1905), Female. a. habitus (lateral); b. urosome (dorsal); c/d. forhead (dorsal/lateral); e/f. genital double-somite (ventral/lateral); g. left antennule (ventral); h. left antenna (posterior); i. left mandible (posterior); j/k. cutting edge of left/right mandible (posterior). Fig. 11. Female. a. left maxillule (posterior); b. left maxilla (posterior); c. right maxilliped (anterior); d. maxilliped basis, second middle marginal seta; e. leg 1 (anterior); f. leg 1, basis (posterior); g/h/i/j. leg 2/3/4/5 (posterior); k. urosome (dorsal). Fig. 12. Male. a/b. urosome (right/left); c. left antennule (ventral); d. leg 5 (anterior); e. leg 5 (anterior, endopod and distal exopod segments omitted); f. right leg 5 (anterior, endopod omitted); g/h. right leg 5 exopod (posterior); i/j. left leg 5 exopod (anterior/posterior).

Adapted from Razouls C., de Bovée F., Kouwenberg J. and Desreumaux N., 2005-2020. Diversity and Geographic Distribution of Marine Planktonic Copepods. Sorbonne University, CNRS. Available at <http://copepodes.obs-banyuls.fr/en> [Accessed May 07, 2021].

Mesorhabdus gracilis G.O. Sars, 1907 (Size: female, 3.70-5.58 mm; male, 4.91 mm)

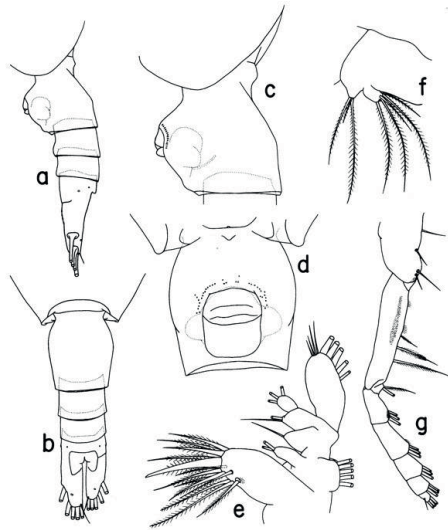


Fig. 13

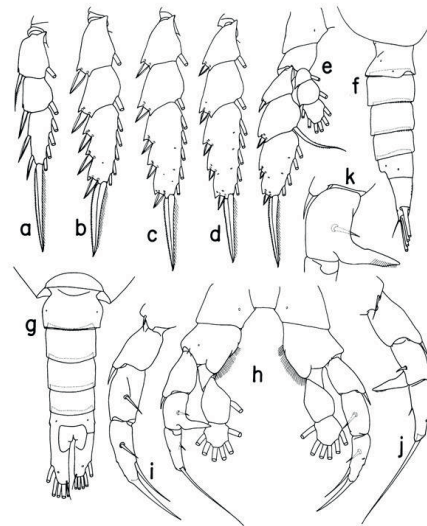


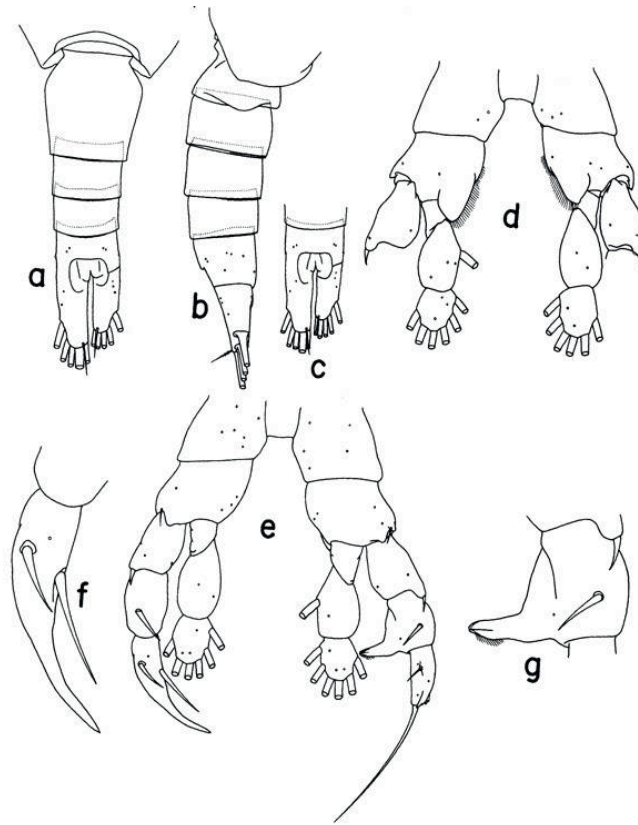
Fig. 14

Mesorhabdus gracilis G.O. Sars, 1907

Park, 2000: fig. 13. *Mesorhabdus gracilis* G.O. Sars, 1907, Female. a/b. urosome (lateral/dorsal); c/d. genital double-somite (lateral/ventral); e. left maxillule (posterior); f. left maxilla, distal precoxal endite (posterior); g. right maxilliped (anterior). Fig. 14. Female. a/b/c/d leg 1/2/3/4 exopod (anterior); e. leg 5 (posterior). Male. f/g. urosome (lateral/dorsal); h. leg 5 (anterior); i. left leg 5 exopod (posterior); j. right leg 5 exopod (posterior); k. right leg 5 exopod segment 2 (anterior).

Adapted from Razouls C., de Bovée F., Kouwenberg J. and Desreumaux N., 2005-2020. Diversity and Geographic Distribution of Marine Planktonic Copepods. Sorbonne University, CNRS. Available at <http://copepodes.obs-banyuls.fr/en> [Accessed May 07, 2021].

Mesorhabdus poriphorus Park, 2000 (Size: female, 5.25-5.75 mm; male, 5.41-5.50 mm)



Mesorhabdus poriphorus Park, 2000

Park, 2000: fig.17. *Mesorhabdus poriphorus* Park, 2000, Female. a. urosome (dorsal). Male. b. urosome (lateral); c. posterior part of urosome (dorsal); d. leg 5 (anterior, distal exopod segments omitted); e. leg 5 (posterior); f. left leg 5, distal exopod segments (posterior); g. right leg 5, exopod segment 2 (posterior).

Adapted from Razouls C., de Bovée F., Kouwenberg J. and Desreumaux N., 2005-2020. Diversity and Geographic Distribution of Marine Planktonic Copepods. Sorbonne University, CNRS. Available at <http://copepodes.obs-banyuls.fr/en> [Accessed May 07, 2021].