



Key to the species of Candaciidae Candacia occurring in the China Seas

Chang-tai Shih

National Taiwan Ocean University, ctshih@mail.ntou.edu.tw

Qing-Chao Chen

South China Sea Institute of Oceanology

Yang-Chi Lan

Fisheries Research Institute

Shih-Hui Hsiao

National Taipei University of Education

Chi-Yu Weng

Institute of Oceanography, National Taiwan University/Ocean Data Bank of the Ministry of National Science and Technology Council, Taiwan

Follow this and additional works at: <https://jmstt.ntou.edu.tw/journal>



Part of the [Fresh Water Studies Commons](#), [Marine Biology Commons](#), [Ocean Engineering Commons](#), [Oceanography Commons](#), and the [Other Oceanography and Atmospheric Sciences and Meteorology Commons](#)

Recommended Citation

Shih, Chang-tai; Chen, Qing-Chao; Lan, Yang-Chi; Hsiao, Shih-Hui; and Weng, Chi-Yu (2022) "Key to the species of Candaciidae Candacia occurring in the China Seas," *Journal of Marine Science and Technology*: Vol. 30: Iss. 5, Article 33.

DOI: 10.51400/2709-6998.2624

Available at: <https://jmstt.ntou.edu.tw/journal/vol30/iss5/33>

This Review-Taxonomic Index is brought to you for free and open access by Journal of Marine Science and Technology. It has been accepted for inclusion in Journal of Marine Science and Technology by an authorized editor of Journal of Marine Science and Technology.

REVIEW-TAXONOMIC INDEX

Key to the Species of Candaciidae *Candacia* Occurring in the China Seas

Chang-tai Shih ^{a,*}, Qing-Chao Chen ^b, Yang-Chi Lan ^c, Shih-Hui Hsiao ^d, Chi-Yu Weng ^e

^a National Taiwan Ocean University, Taiwan

^b South China Sea Institute of Oceanology, China

^c Fisheries Research Institute, Taiwan

^d National Taipei University of Education, Taiwan

^e Institute of Oceanography, National Taiwan University/Ocean Data Bank of the Ministry of National Science and Technology Council, Taiwan

Candacia armata (10b/35a/f), *bipinnata* (10a/39a/f), *bispinosa* (3a/22a/f), *bradyi* (7a/30b/f), *catula* (18a/26a/f), *columbiae* (20b/39b/f), *curta* (13a/29a/f), *discaudata* (14a/30a/f), *elongate* (6a/25a/f), *ethiopica* (19a/33a/f), *guggenheimi* (16a/34b/f), *longimana* (11a/38a/f), *norvegica* (20a/34a/f), *pachydactyla* (18b/36a/f), *simplex* (5b/23a/f), *temuimana* (13b/38b/f), *truncata* (5a/24a/f), *tuberculata* (16b/28a/f), *varicans* (12a/32a/f), *worthingtoni* (4a/24b/f)

1a	Female	2
1b	Male	21
2a/1a	Leg 5 ending in finger-like process	3
2b	Leg 5 ending in spine-like process	6
3a/2a	Genital double-somite: both lateral margins with a spinous protrusion, left protrusion much longer than right protrusion.....	<i>Candacia bispinosa</i>
3b	Genital double-somite: both lateral margins more or less crescent shaped	4
4a/3b	Genital double-somite asymmetrical, right margin more expanded at distal third	<i>Candacia worthingtoni</i>
4b	Genital double-somite symmetrical.....	5
5a/3b	Posterolateral corners of prosome more or less rounded, not pointed. Prosome length 1.6 times width. Genital double-somite as long as wide, both lateral margins moderately curved.....	<i>Candacia truncata</i>
5b	Posterolateral corners of prosome pointed. Prosome length nearly twice width. Genital double-somite slightly wider than long, both lateral margins strongly convexed	<i>Candacia simplex</i>
6a/2b	Posterolateral corners of prosome rounded.....	<i>Candacia elongata</i>
6b	Posterolateral corners of prosome pointed	7
7a/6b	Genital double-somite with a dorsal lobe near posterior margin to the right.....	<i>Candacia bradyi</i>
7b	Genital double-somite without dorsal lobe.....	8
8a/7b	Leg 5: segment 3 without setae on inner margin	9
8b	Leg 5: segment 3 with 2 or 3 setae on inner margin	14
9a/8a	Leg 5: segment 3 with 1 spine-like terminal process, outer margin with 3 feeble spines.....	10
9b	Leg 5: segment 3 with 2 or 3 spine-like terminal processes, outer margin with 1 or 2 spines	11
10a/9a	Genital double-somite: lateral margins wing-like, with pointed end	<i>Candacia bipinnata</i>
10b	Genital double-somite: lateral margins convex.....	<i>Candacia armata</i>
11a/9b	Leg 5: segment 3 with 3 spine-like terminal processes and 1 lateral spine.....	<i>Candacia longimana</i>
11b	Leg 5: segment 3 with 2 spine-like terminal processes and 1 or 2 lateral spines	12
12a/11b	Leg 5: segment 3 with 2 lateral spines	<i>Candacia varicans</i>
12b	Leg 5: segment 3 with 1 or no lateral spine.....	13
13a/12b	Leg 5: segment 3 with 1 inner spine.....	<i>Candacia curta</i>
13b	Leg 5: segment 3 without inner spine.....	<i>Candacia temuimana</i>
14a/8b	Genital double-somite asymmetrical. Leg 5 segment 3 with 3 terminal spines and 3 outer spines.....	<i>Candacia discaudata</i>

Available online 14 November 2022

* Corresponding author.

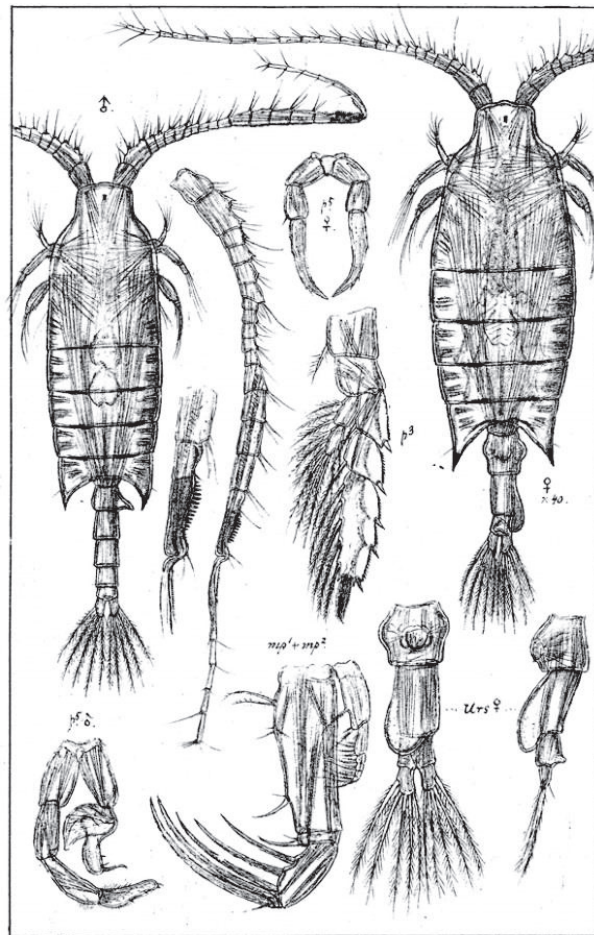
E-mail address: ctshih@mail.ntou.edu.tw (C.-t. Shih).



14b	Genital double-somite symmetrical. Leg 5 segment 3 with 2 terminal spines and 2 outer spines.....	15
15a/14b	Leg 5 segment 3 with 2 inner setae	16
15b	Leg 5 segment 3 with 3 inner setae	17
16a/15b	Genital double-somite: proximal half of lateral margin swollen forming a semicircular curvature. Leg 5 segment 3: outer terminal spine 3 times as long as inner terminal spine.....	<i>Candacia guggenheimi</i>
16b	Genital double-somite laterally convexed. Leg 5 segment 3: inner terminal seta 3 times as long as outer terminal spine.....	<i>Candacia tuberculata</i>
17a/15b	Leg 5 segment 3, a small process appeared between two terminal spines	18
17b	Leg 5 segment 3, no process between two terminal spines	19
18a	Genital double-somite without spine on lateral margin. Leg 5 segment 3, inner setae length more than 2 times width of the segment.....	<i>Candacia catula</i>
18b	Genital double-somite with a robust spine on each lateral margin. Leg 5 segment 3, inner setae shorter than width of the segment.....	<i>Candacia pachydactyla</i>
19a/17b	Leg 5 segment 3: inner setae thick and significantly unequal in length, distal inner seta 3 times as long as proximal inner seta	<i>Candacia ethiopica</i>
19b	Leg 5 segment 3: inner setae thin and subequal in length	20
20a/19b	Genital double-somite with a notch at proximal third of lateral margin and a small process at distal third of lateral margin. Leg 5 segment 3: outer terminal spine nearly twice as long as inner terminal spine.....	<i>Candacia norvegica</i>
20b	Genital double-somite with undulated left lateral margin and convexed right lateral margin. Leg 5 segment 3: outer and inner terminal spines subequal in length.....	<i>Candacia columbiae</i>
21a/1b	Right Leg 5 ending in a long seta	22
21b	Right leg 5 ending in a chela	25
22a/21a	In dorsal view genital double-somite with spine-like protrusion arising from each side and directed posteriorly.....	<i>Candacia bispinosa</i>
22b	In dorsal view genital double-somite without spine-like protrusion.....	23
23a/22b	Prosome: length 1.5 times width. Left leg 5 segment 2: length 1.5 times width, inner margin straight, outer margin semicircular.....	<i>Candacia simplex</i>
23b	Prosome: length 2.5 times width. Left leg 5 segment 2: length longer than 2 times width, both margins nearly parallel and straight.....	24
24a/23b	Left leg 5: segment 3 length more than 3 times width; outer margin straight.....	<i>Candacia truncata</i>
24b	Left leg 5: segment 3 length 2 times width; outer margin semicircular.....	<i>Candacia worthingtoni</i>
25a/21b	Posterolateral corners of prosome rounded.....	<i>Candacia elongata</i>
25b	Posterolateral corners of prosome pointed	26
26a/25b	In dorsal view genital double-somite symmetrical	<i>Candacia catula</i>
26b	In dorsal view genital double-somite asymmetrical, right margin modified	27
27a/26b	Left leg 5 segment 3, length/width ratio <2.....	28
27b	Left leg 5 segment 3, length/width ratio >2.5.....	31
28a/27a	Left leg 5 segment 3, length equal to width; leg 5 segment 4>segment 3.....	<i>Candacia tuberculata</i>
28b	Left leg 5 segment 3 length/width ratio >1; segment 4 shorter than segment 3.....	29
29a/28b	Genital double-somite, right margin with an extended process.....	<i>Candacia curta</i>
29b	Genital double-somite, right margin without extended process.....	30
30a/29b	Posterolateral corners of prosome triangularly pointed, reaching midlength of genital double-somite. Genital double-somite: left margin slightly concaved in middle. Left leg 5 segment 3 outer margin convexed, inner margin straight.....	<i>Candacia discaudata</i>
30b	Posterolateral corners of prosome nearly rectangular, barely protruded posteriorly. Genital double-somite: left margin slightly convexed. Left leg 5 segment 3 cylindrical with parallel margins	<i>Candacia bradyi</i>
31a/27b	Genital double-somite: right margin protruded, not pointed.....	32
31b	Genital double-somite: right margin protruded and pointed.....	35
32a/31a	Posterolateral corners of pediger 5 forming symmetrically triangular protrusions.....	<i>Candacia varicans</i>
32b	Posterolateral corners of pediger 5 forming asymmetrical protrusions, left projection less prominent and shorter, right projection more prominent, longer and hook-like.....	33
33a/32b	Genital double-somite: right margin with insignificant protrusion; left margin slightly concaved in distal half.....	<i>Candacia ethiopica</i>
33b	Genital double-somite: right margin with significant protrusion; left margin nearly straight.....	34
34a/33b	Protrusion of right posterolateral corner of pediger 5 bent slightly inward. Genital double-somite: protrusion extended from distal half of right margin, about half as long as width of genital double-somite, ending in trilobular terminal end.....	<i>Candacia norvegica</i>
34b	Protrusion of right posterolateral corner of pediger 5 bent strongly inward. Genital double-somite: protrusion extended from middle of right margin, about one quarter as long as width of genital double-somite, ending in slightly concaved distal end.....	<i>Candacia guggenheimi</i>
35a/31b	Posterolateral corners of pediger 5 forming pointed and symmetrical processes extending posteriorly to distal border of genital double-somite.....	<i>Candacia armata</i>
35b	Posterolateral corners of pediger 5 forming asymmetrical processes, left process usually less distinct than right process, right process usually extended and hook-like.....	36
36a/35b	Left leg 5 segment 4: one of the terminal spines half as long as the segment.....	<i>Candacia pachydactyla</i>

36b	Left leg 5 segment 4: none of the terminal spines longer than one-fifth length of the segment	37
37a/36b	Left leg 5 segment 3: outer margin near distal end with spinous process or spine	38
37b	Left leg 5 segment 3: outer margin lacking these structures	39
38a/36a	Right posterolateral process of prosome bent inward. Genital double-segment: right lateral process rising from distal half and bending posteriorly	<i>Candacia longimana</i>
38b	Right posterolateral process of prosome extended posteriorly. Genital double-somite: right lateral process rising from middle and extended laterally	<i>Candacia tenuimana</i>
39a/37b	Left leg 5: segment 1 nearly twice as long as segment 2. Genital double-somite, lateral process of right margin triangular.....	<i>Candacia bipinnata</i>
39b	Left leg 5: segments 1 and 2 subequal in length. Genital double-somite, lateral process of right margin finger-like with bifid distal end and bearing posteriorly and somewhat ventrally an ear-shaped lobe	<i>Candacia columbiae</i>

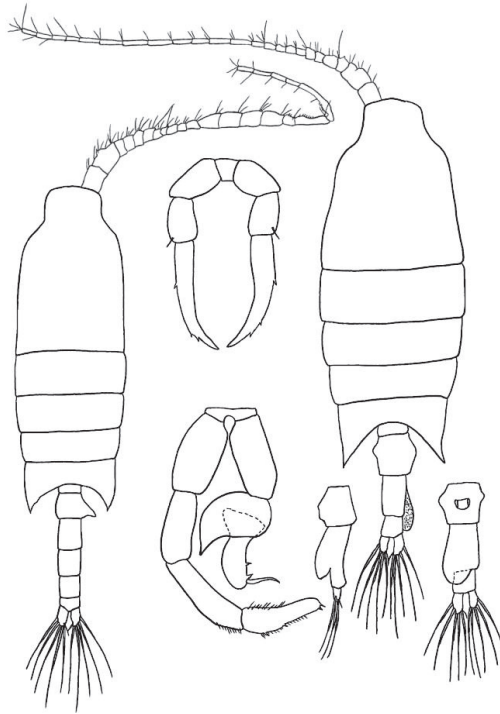
Candacia armata Boeck, 1872 (Size: female, 1.72–2.90 mm; male, 1.70–2.90 mm)



Candacia armata Boeck, 1872

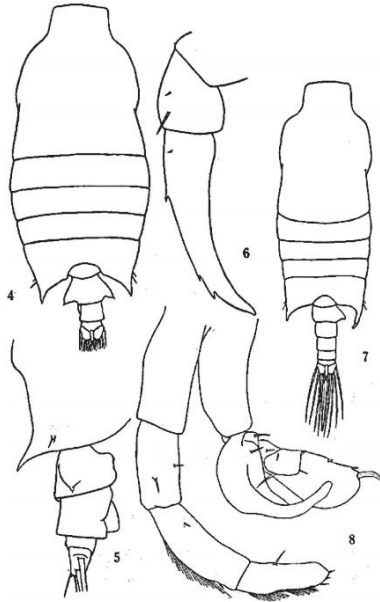
Sars, 1903: pl. 91. Female: habitus (dorsal); urosome (dorsal & lateral); maxilla & maxilliped; leg 3; leg 5. Male: habitus (dorsal); right antennule and its middle segments; leg 5 (posterior).

Adapted from Razouls C., de Bovée F., Kouwenberg J. and Desreumaux N., 2005–2020. Diversity and Geographic Distribution of Marine Planktonic Copepods. Sorbonne University, CNRS. Available at <http://copepodes.obs-banyuls.fr/en> [Accessed]

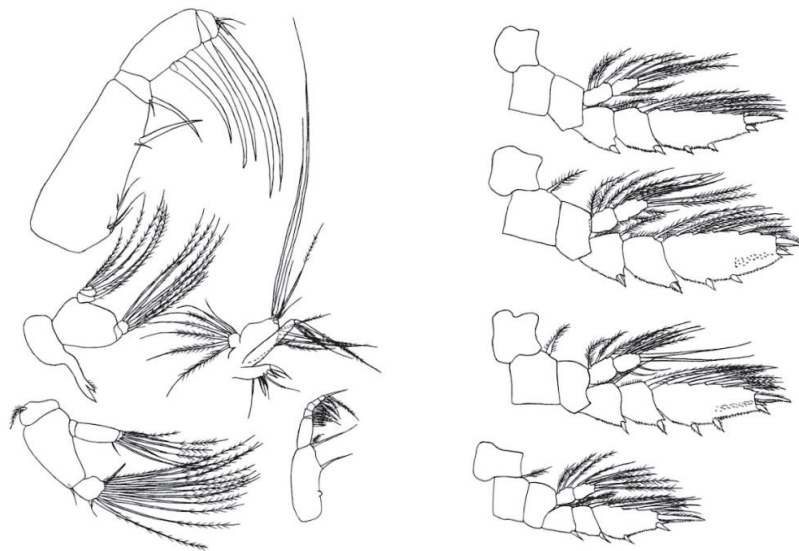
Candacia armata Boeck, 1872*Candacia armata* Boeck, 1872

Original. *C. armata* Boeck, 1872, female, 2.45 mm, East China Sea, habitus (dorsal); leg 5, urosome (dorsal/lateral); male, 2.38 mm, East China Sea, habitus (dorsal); leg 5.

Candacia bipinnata (Giesbrecht, 1889) (Size: female, 2.09–3.16 mm; male, 1.90–3.02 mm)



Chen & Zhang



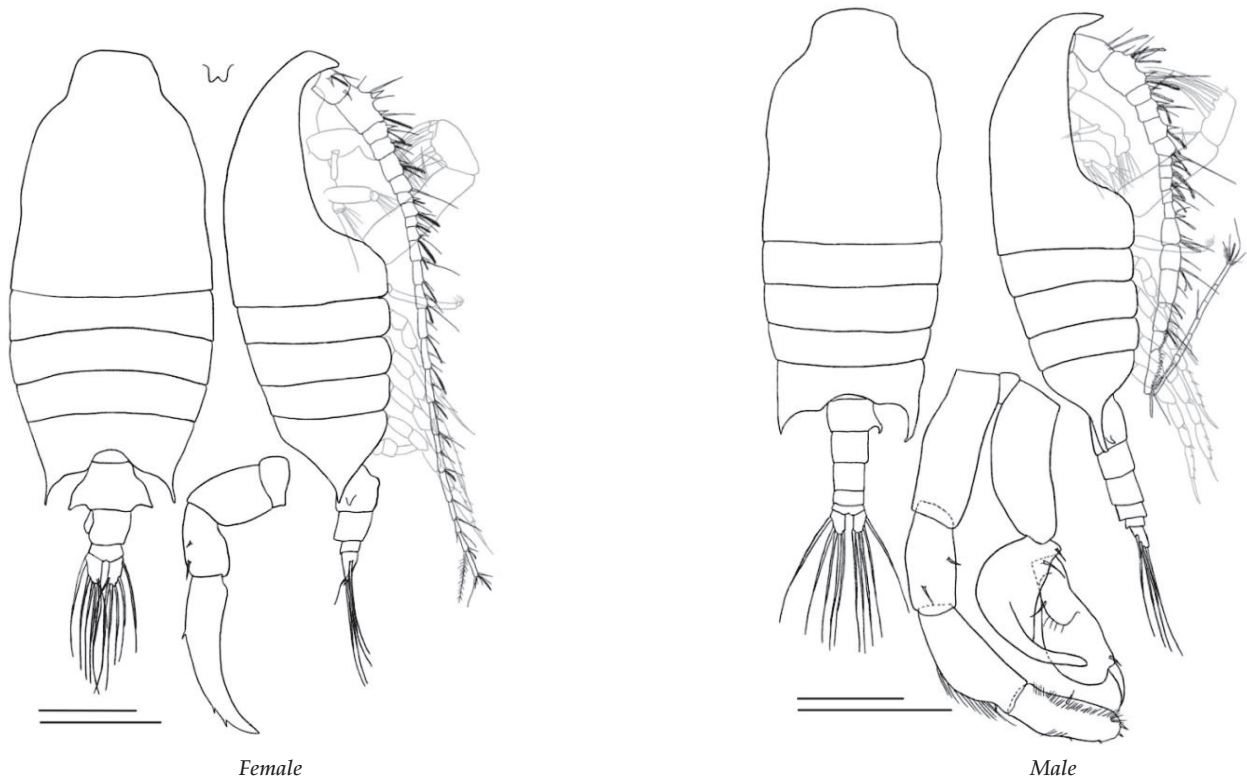
Original

Candacia bipinnata (Giesbrecht, 1889)

Chen & Zhang, 1965: pl. 37. *C. bipinnata* (Giesbrecht, 1889), Female. 4. Habitus (dorsal); 5. Urosome (lateral); 6. Left leg 5. Male. habitus (dorsal); 8. Leg 5 (posterior).

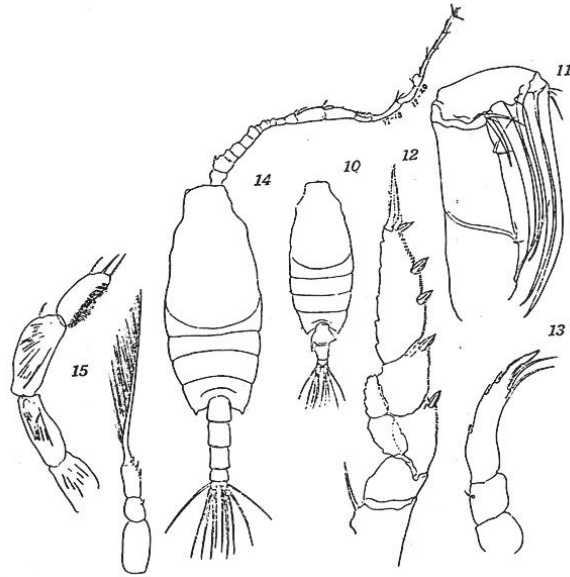
Adapted from Razouls C., de Bovée F., Kouwenberg J. and Desreumaux N., 2005–2020. Diversity and Geographic Distribution of Marine Planktonic Copepods. Sorbonne University, CNRS. Available at <http://copepodes.obs-banyuls.fr/en>. [Accessed November 27, 2020].

Original. *C. bipinnata* (Giesbrecht, 1889), Female, 2.64 mm, East China Sea (25°20'N 122°25'E): c. right antenna; d. right mandible; e. right maxillule; f. right maxilla; g. right maxilliped; h-k. right Legs 1–4.

Candacia bipinnata (Giesbrecht, 1889)*Candacia bipinnata* (Giesbrecht, 1889)

Original. *C. bipinnata* (Giesbrecht, 1889), Female, 2.64 mm, East China Sea (25°20'N 122°25'E): a/b. habitus (dorsal/lateral); c. leg 5 (posterior). Male, 2.40 mm, East China Sea (25°20'N 122°25'E): a/b. habitus (dorsal/lateral); c. leg 5 (posterior).

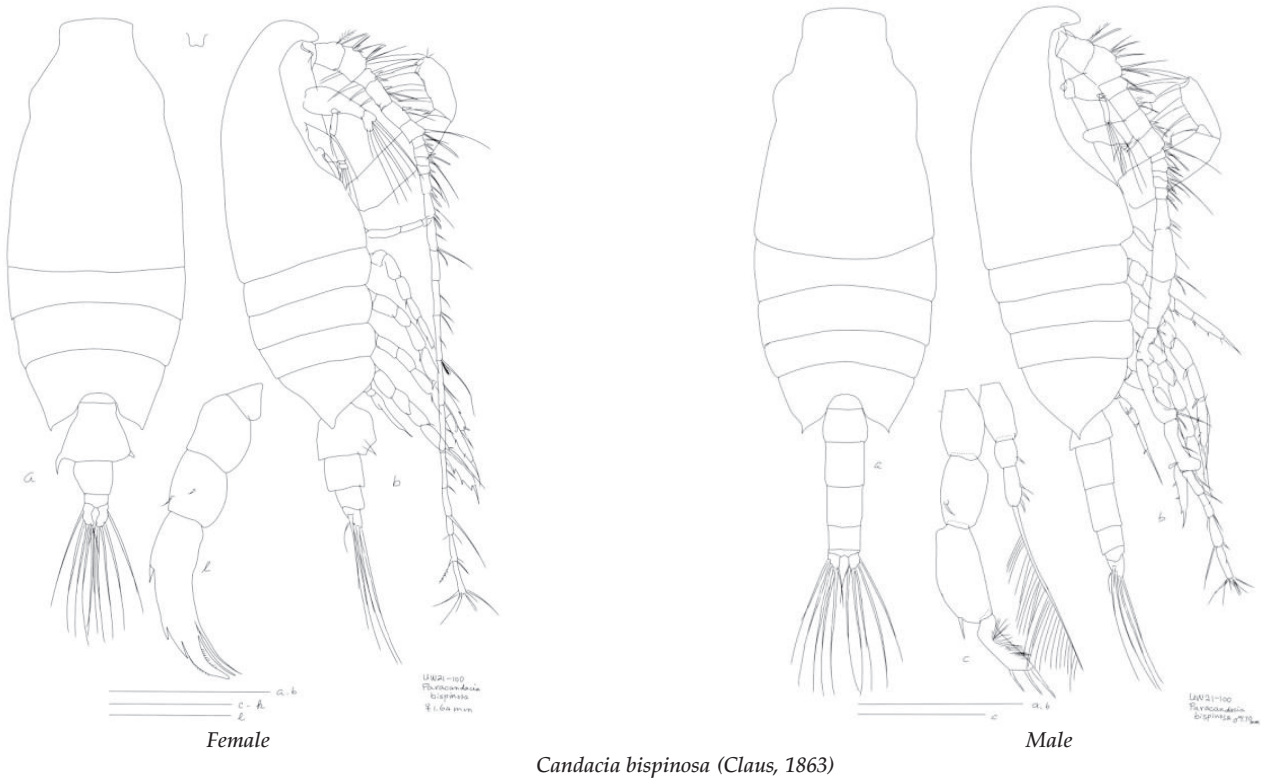
Candacia bispinosa (Claus, 1863) (Size: female, 1.50–2.16 mm; male, 1.36–2.00 mm)



Candacia bispinosa (Claus, 1863)

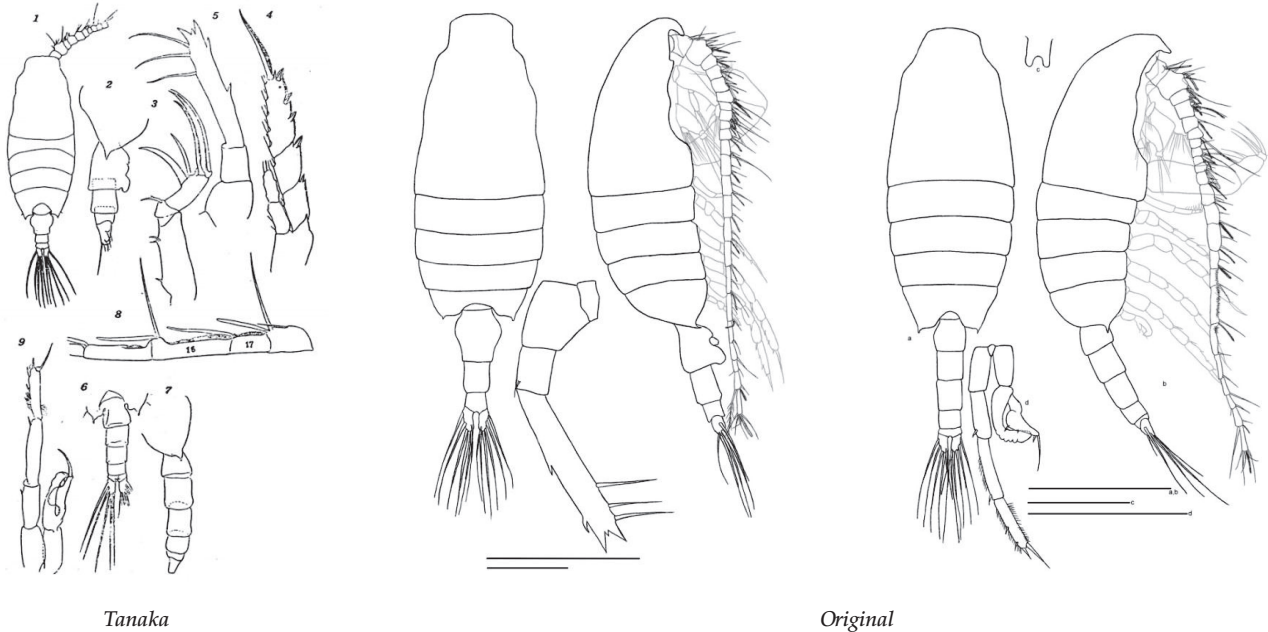
Tanaka, 1935: pl. 6. Female. 10. Habitus (dorsal); 11. Maxilla; 12. Leg 3; 13. Leg 5. Male. 14. Habitus (dorsal); 15 leg 5 (left and right).

Adapted from Razouls C., de Bovée F., Kouwenberg J. and Desreumaux N., 2005–2020. Diversity and Geographic Distribution of Marine Planktonic Copepods. Sorbonne University, CNRS. Available at <http://copepodes.obs-banyuls.fr/en>. [Accessed May 20, 2021].

Candacia bispinosa (Claus, 1863)

Original. *C. bispinosa* (Claus, 1863), Female, 1.64 mm, East China Sea (25°25'N 122°15'E): a/b. habitus (dorsal/lateral); c. rostrum; d. leg 5. Male, 1.70 mm, East China Sea (25°25'N 122°15'E): a/b. habitus (dorsal/lateral); c. leg 5 (posterior).

Candacia catula (Giesbrecht, 1889) (Size: female, 1.32–1.70 mm; male, 1.30–1.62 mm)



Tanaka

Original

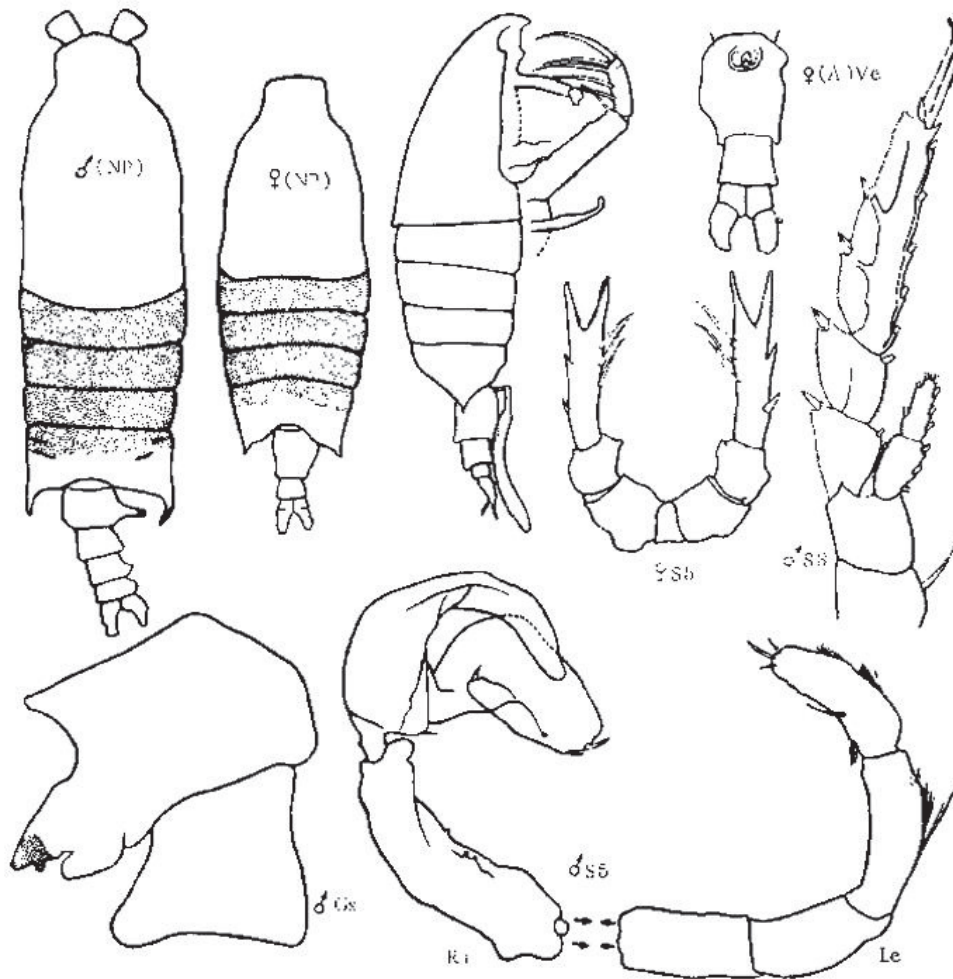
Candacia catula (Giesbrecht, 1889)

Tanaka, 1935: pl. 4. Female. 1. habitus (dorsal); 2. pediger 5 and urosome (lateral); 3. maxilla; 4. Leg 3; 5. leg 5. Male. 6/7. pediger 5 and urosome (dorsal/lateral); 8. right antennule; 9. leg 5 (anterior).

Adapted from Razouls C., de Bovée F., Kouwenberg J. and Desreumaux N., 2005–2020. Diversity and Geographic Distribution of Marine Planktonic Copepods. Sorbonne University, CNRS. Available at <http://copepodes.obs-banyuls.fr/en>. [Accessed May 26, 2021].

Original. *C. catula* (Giesbrecht, 1889), Female, 1.66 mm, East China Sea (25°51'N 121°28'E): a/b. habitus (dorsal/lateral); c. leg 5 (posterior). Male, 1.46 mm, East China Sea (25°51'N 121°28'E): a/b. habitus (dorsal/lateral); c. rostrum (anterior); d. leg 5 (posterior)

Candacia columbiae Campbell, 1929 (Size: female, 3.70–4.60 mm; male, 3.20–4.50 mm)

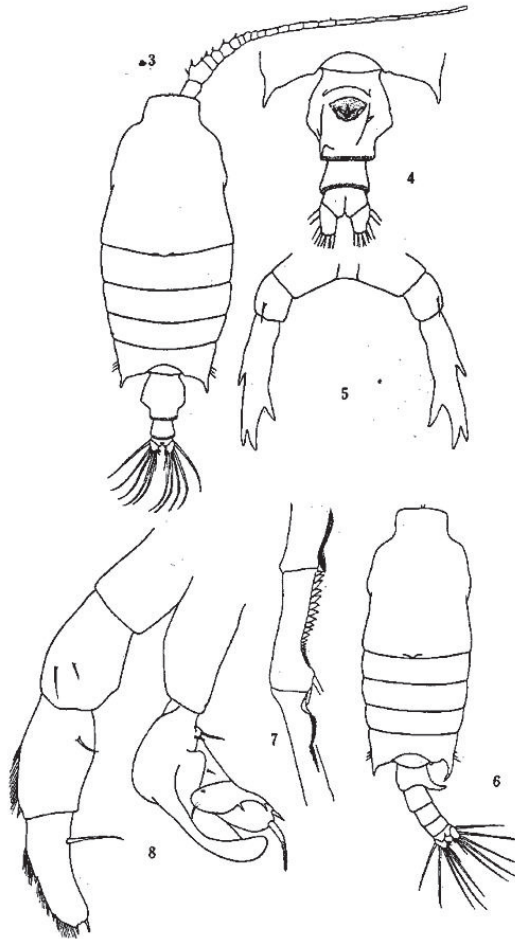


Candacia columbiae Campbell, 1929

Brodsky, 1950: Fig. 287. Female. habitus (dorsal/lateral); urosome (ventral); leg 5. Male. habitus (dorsal); leg 3; leg 5 (posterior); genital somite (lateral).

Adapted from Razouls C., de Bovée F., Kouwenberg J. and Desreumaux N., 2005–2020. Diversity and Geographic Distribution of Marine Planktonic Copepods. Sorbonne University, CNRS. Available at <http://copepodes.obs-banyuls.fr/en>. [Accessed may 07, 2021].

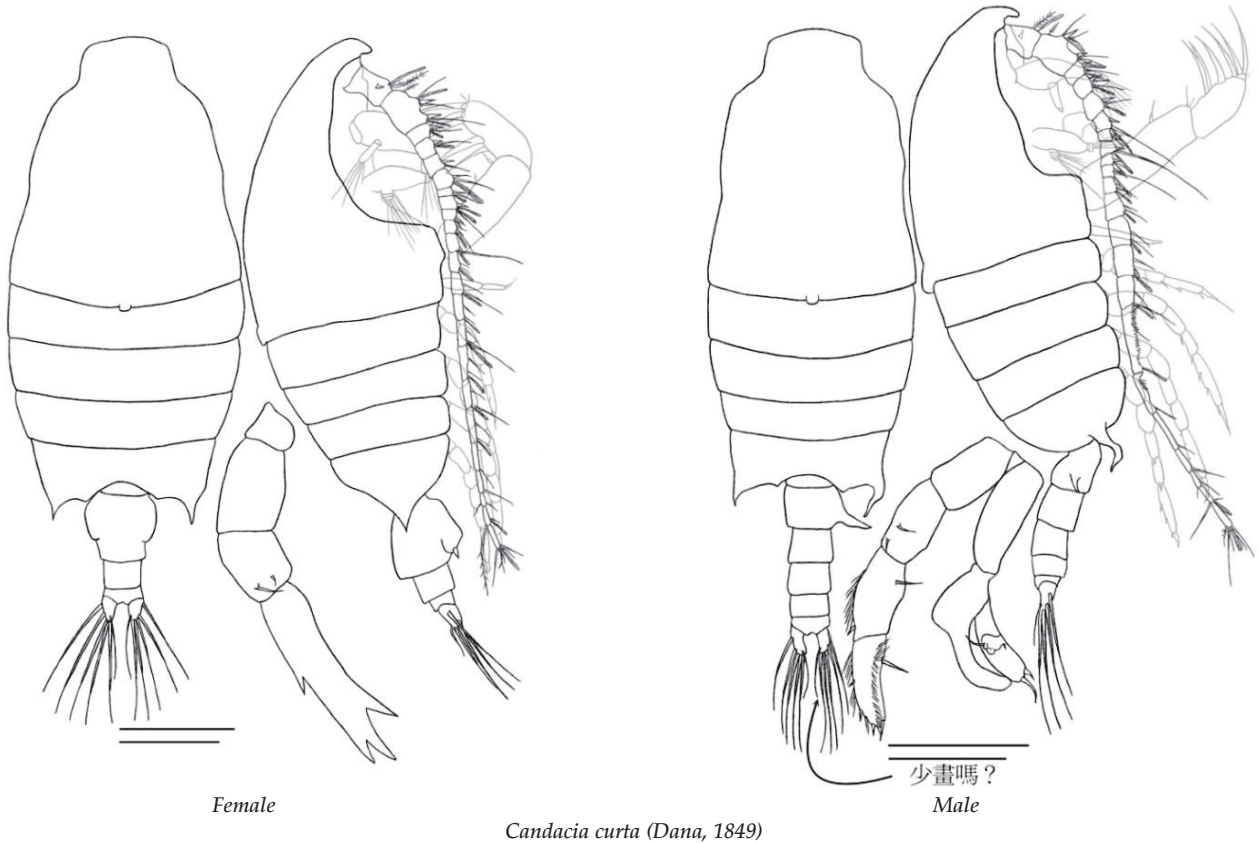
Candacia curta (Dana, 1849) (Size: female, 1.80–2.50 mm; male, 1.46–2.72 mm)



Candacia curta (Dana, 1849)

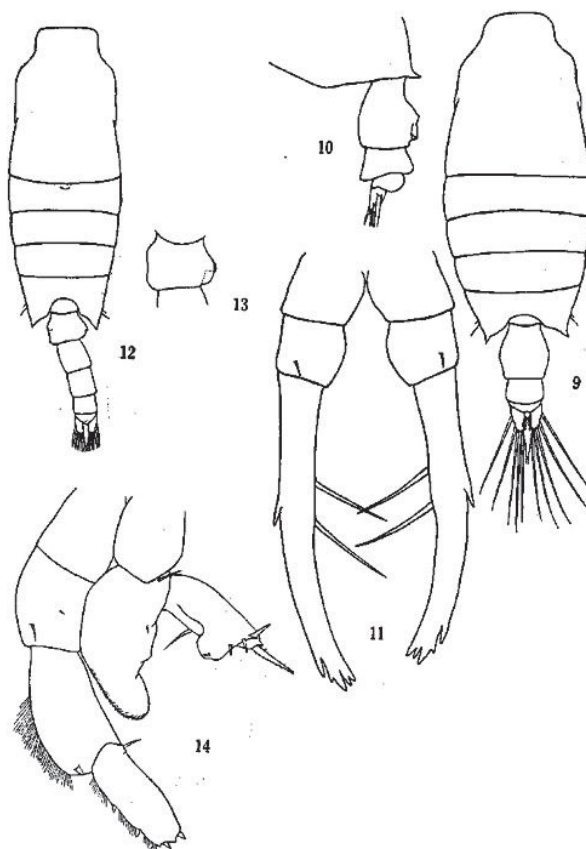
Chen & Zhang, 1965: pl. 36. Female. 3. habitus (dorsal); 4. urosome (ventral); 5. leg 5. Male. 6. habitus (dorsal); 7. right antennule segments 16–18; 8. leg 5 (posterior).

Adapted from Razouls C., de Bovée F., Kouwenberg J. and Desreumaux N., 2005–2020. Diversity and Geographic Distribution of Marine Planktonic Copepods. Sorbonne University, CNRS. Available at <http://copepodes.obs-banyuls.fr/en>. [Accessed May 27, 2021].

Candacia curta (Dana, 1849)

Original. *C. curta* (Dana, 1849), Female, 2.50 mm, East China Sea (25°39'N 122°50'E): a/b. habitus (dorsal/lateral); c. leg 5 (posterior). Male, 2.40 mm, East China Sea (25°39'N 122°50'E): a/b. habitus (dorsal/lateral); c. leg 5 (posterior).

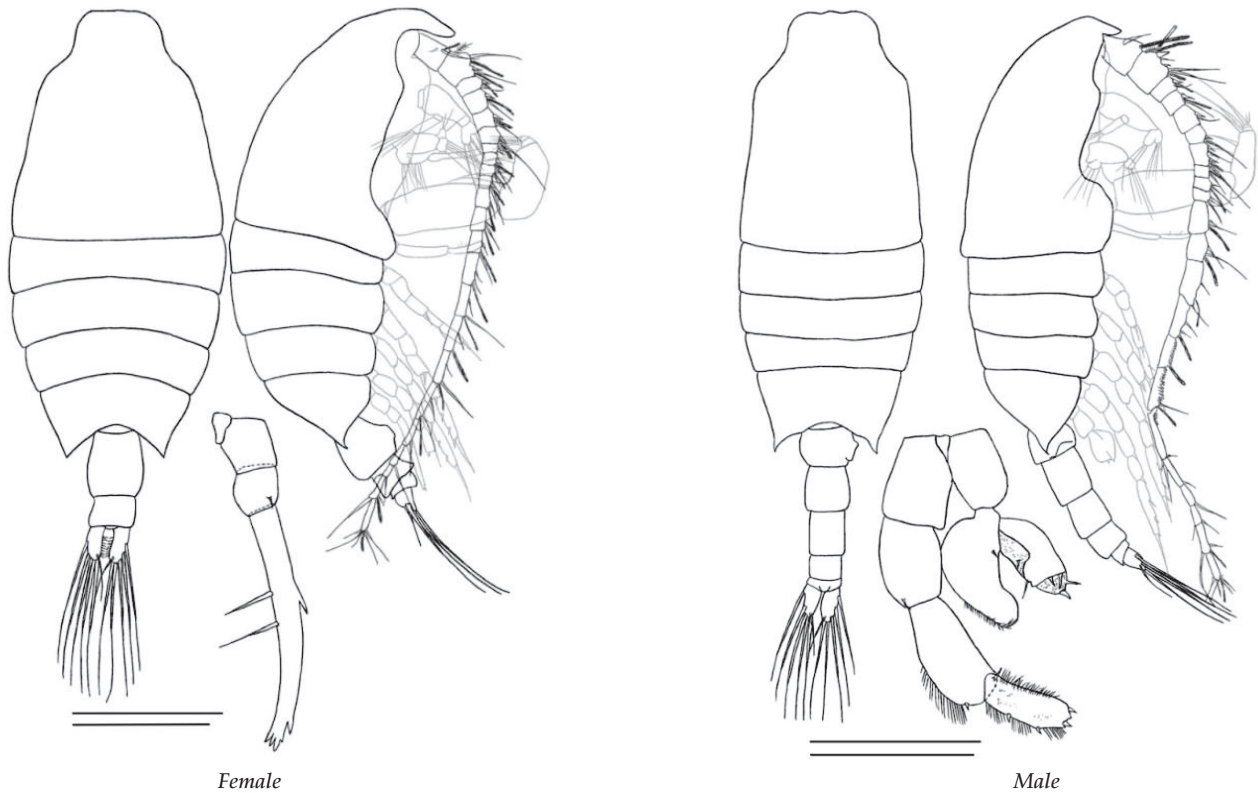
Candacia discaudata A. Scott, 1909 (Size: female, 1.55–1.94 mm; male, 1.48–1.82 mm)



Candacia discaudata A. Scott, 1909

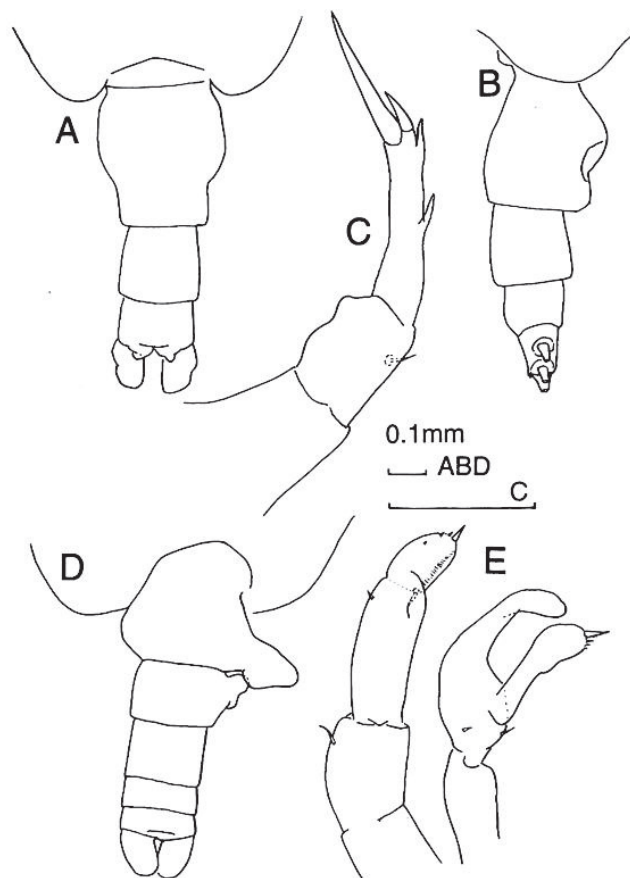
Chen & Zhang, 1965: pl. 37. Female. 9. habitus (dorsal); 10. urosome (lateral); 11. leg 5. Male. 12. habitus (dorsal); 13. genital segment (dorsal); 14. leg 5 (posterior).

Adapted from Razouls C., de Bovée F., Kouwenberg J. and Desreumaux N., 2005–2020. Diversity and Geographic Distribution of Marine Planktonic Copepods. Sorbonne University, CNRS. Available at <http://copepodes.obs-banyuls.fr/en>. [Accessed May 17, 2021].

Candacia discaudata A. Scott, 1909*Candacia discaudata* A. Scott, 1909

Original. *C. discaudata* A. Scott, 1909, Female, 1.80 mm, East China Sea (25°30'N 122°09'E): a/b. Habitus. (dorsal/lateral); c. leg 5 (posterior). Male, 1.71 mm, East China Sea (25°30'N 122°09'E): a/b. habitus (dorsal/lateral); c. leg 5 (posterior).

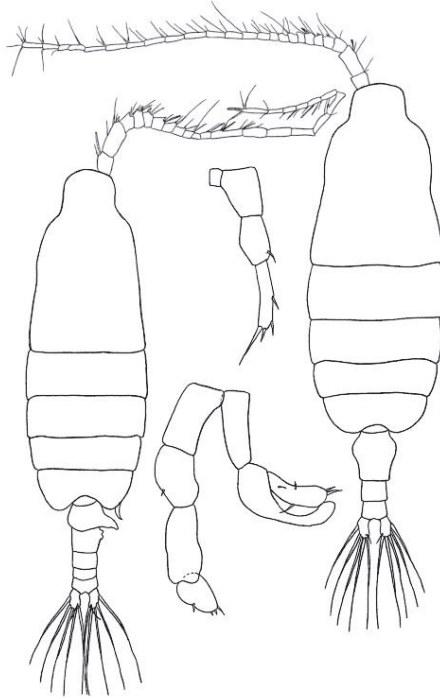
Candacia elongata (Boeck, 1872) (Size: female, 1.97–3.50 mm; male, 3.04–3.80 mm)



Candacia elongata (Boeck, 1872)

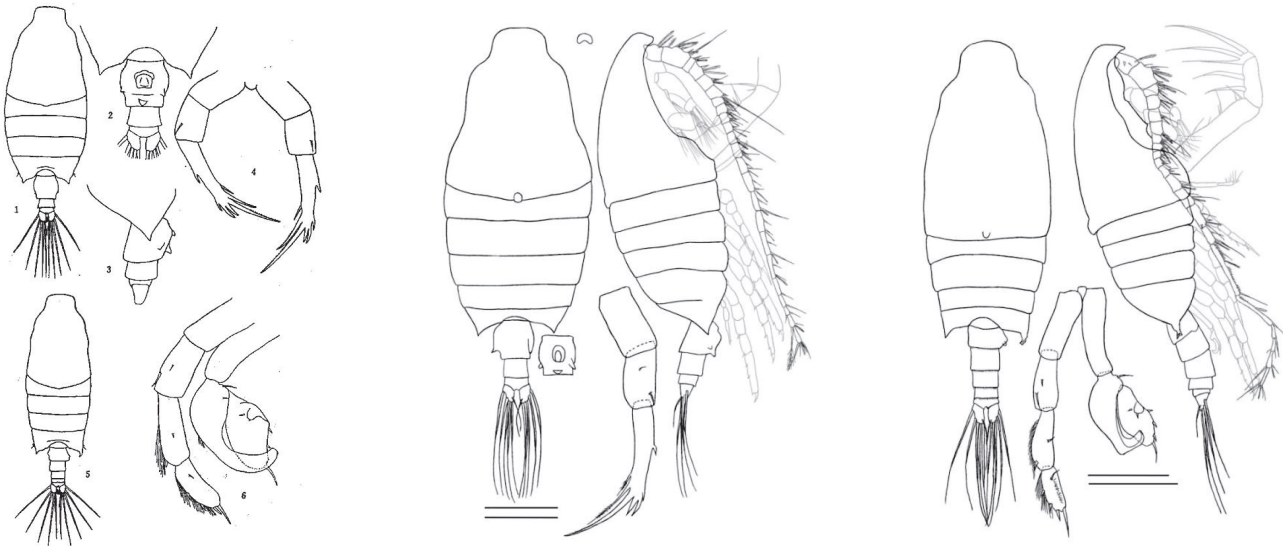
Bradford-Grieve, 1999: f.119. **Female:** A/B. urosome (dorsal/lateral); C. leg 5. **Male:** D. urosome (dorsal); E. leg 5 (anterior).

Adapted from Razouls C., de Bovée F., Kouwenberg J. and Desreumaux N., 2005–2020. Diversity and Geographic Distribution of Marine Planktonic Copepods. Sorbonne University, CNRS. Available at <http://copepodes.obs-banyuls.fr/en>. [Accessed May 17, 2021].

Candacia elongata (Boeck, 1872)*Candacia elongata* (Boeck, 1872)

Original. *C. elongata* (Boeck, 1872). Female, 3.82 mm, east of Taiwan, habitus (dorsal), leg 5; male, 3.17 mm, east of Taiwan, habitus (dorsal), leg 5.

Candacia ethiopica (Dana, 1849) (Size: female, 1.93–3.03 mm; male, 1.96–2.93 mm)



Chen & Zhang

Female

Male

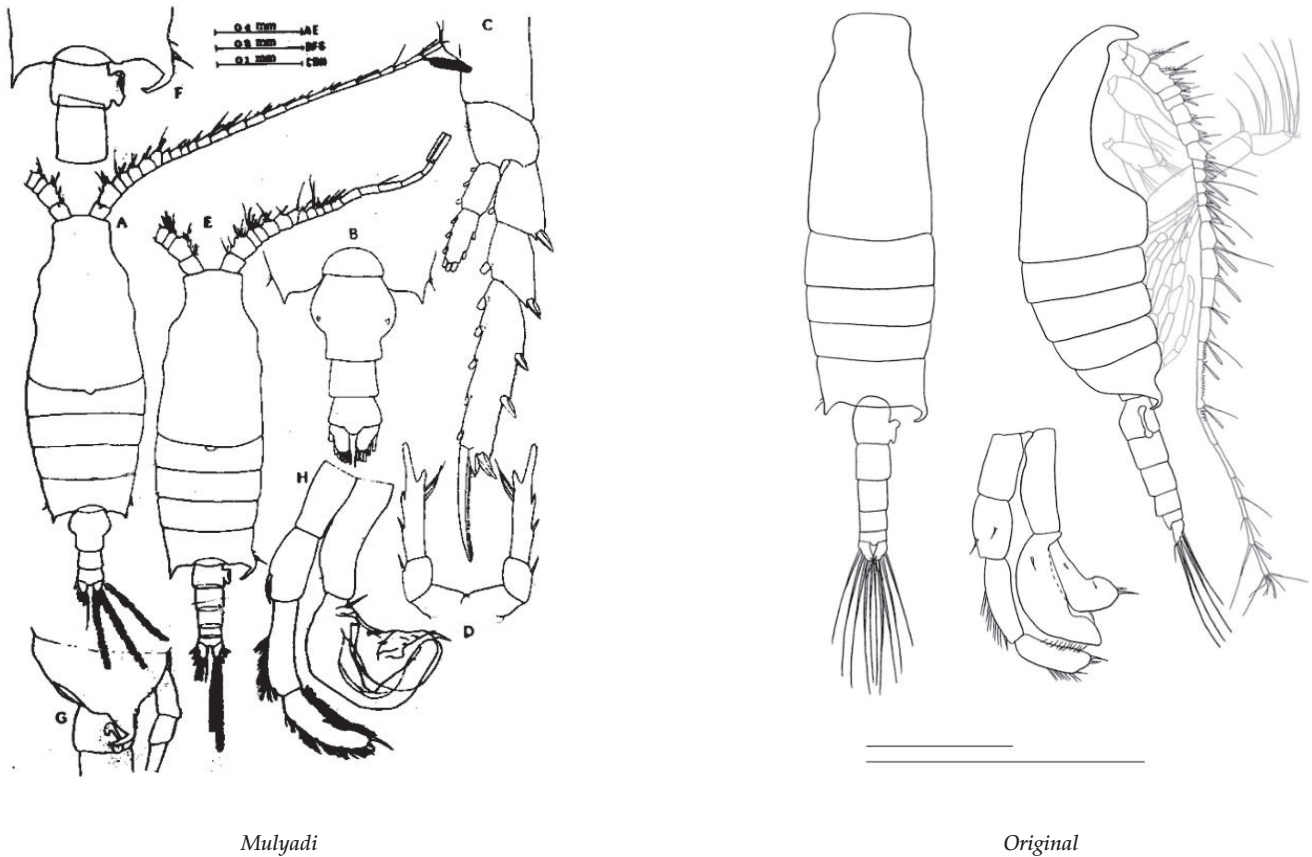
Candacia ethiopica (Dana, 1849)

Chen & Zhang, 1965: pl. 38. *C. ethiopica* (Dana, 1849), Female. 1. habitus (dorsal); 2/3. urosome (ventral/lateral); 4. leg 5. Male. 5. habitus (dorsal); 6. leg 5 (posterior).

Adapted from Razouls C., de Bovée F., Kouwenberg J. and Desreumaux N., 2005–2020. Diversity and Geographic Distribution of Marine Planktonic Copepods. Sorbonne University, CNRS. Available at <http://copepodes.obs-banyuls.fr/en>. [Accessed May 27, 2021].

Original. Female, 2.56 mm, East China Sea (25°30'N 122°09'E): a/b. habitus (dorsal/lateral); c. rostrum (ventral); d. genital double-somite (ventral); e. leg 5 (posterior). Male, 2.32 mm, East China Sea (25°30'N 122°09'E): a/b. habitus (dorsal/lateral); c. leg 5 (posterior).

Candacia guggenheimi Grice & Jones, 1960 (Size: female, 1.86–2.06 mm; 1.80–2.00 mm)



Mulyadi

Candacia guggenheimi Grice & Jones, 1960

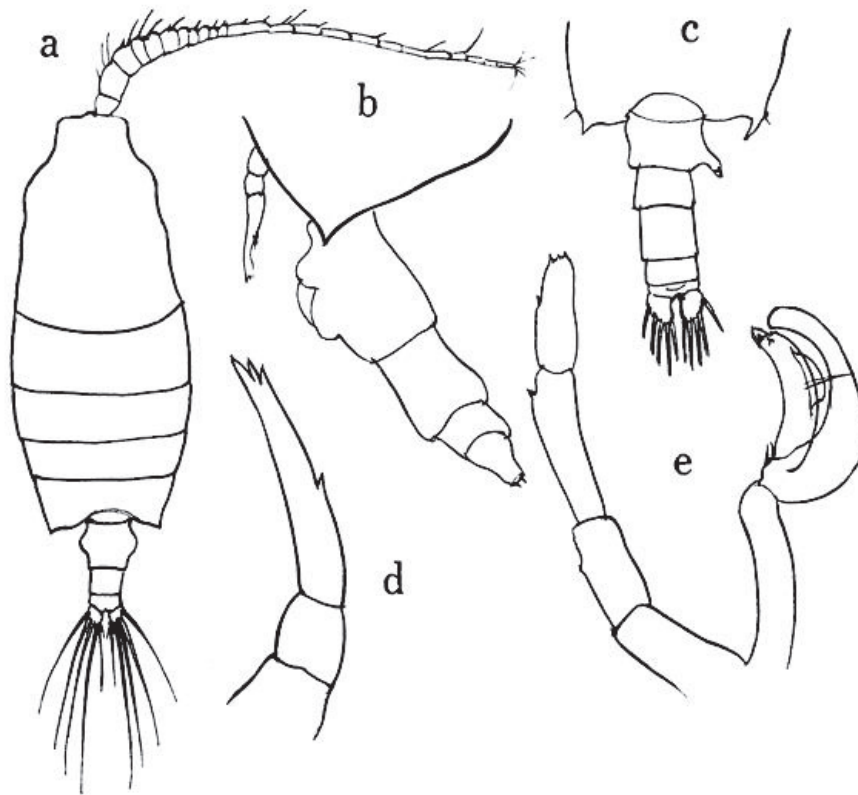
Original

Mulyadi, 199: Fig. 9. *C. guggenheimi* Grice & Jones, 1960, Female. A. habitus (dorsal); B. pediger 5 & urosome (dorsal); C. leg. 3; D. leg 5. Male. E. habitus (dorsal); F. pediger 5 to urosomite 2 (dorsal); G. pediger 5 & genital somite (lateral); H. leg 5 (posterior).

Adapted from Razouls C., de Bovée F., Kouwenberg J. and Desreumaux N., 2005–2020. Diversity and Geographic Distribution of Marine Planktonic Copepods. Sorbonne University, CNRS. Available at <http://copepodes.obs-banyuls.fr/en>. [Accessed May 17, 2021].

Original. Male, 1.96 mm, South China Sea (19°00'N 118°30'E): a/b. habitus (dorsal/lateral); c. leg 5 (posterior).

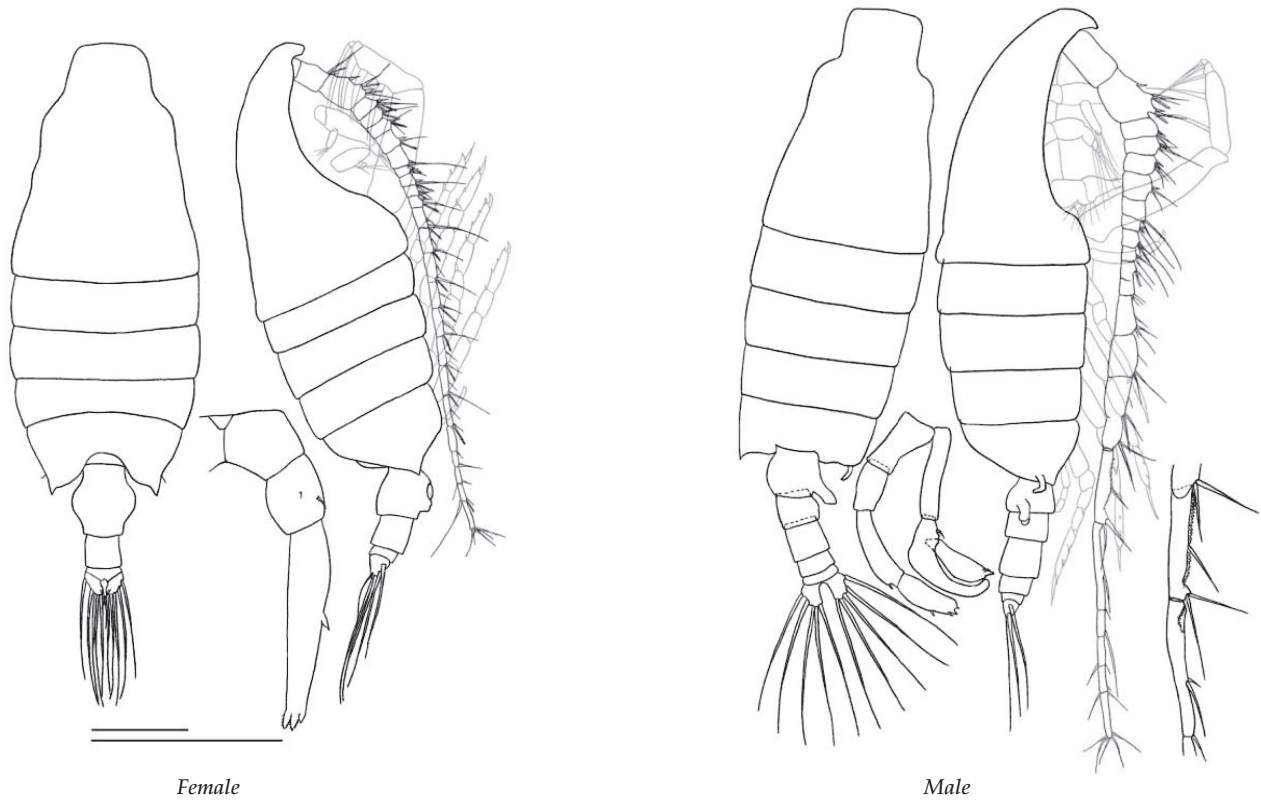
Candacia longimana (Claus, 1863) (Size: female, 2.68–3.90 mm; male, 2.40–3.72 mm)



Candacia longimana (Claus, 1863)

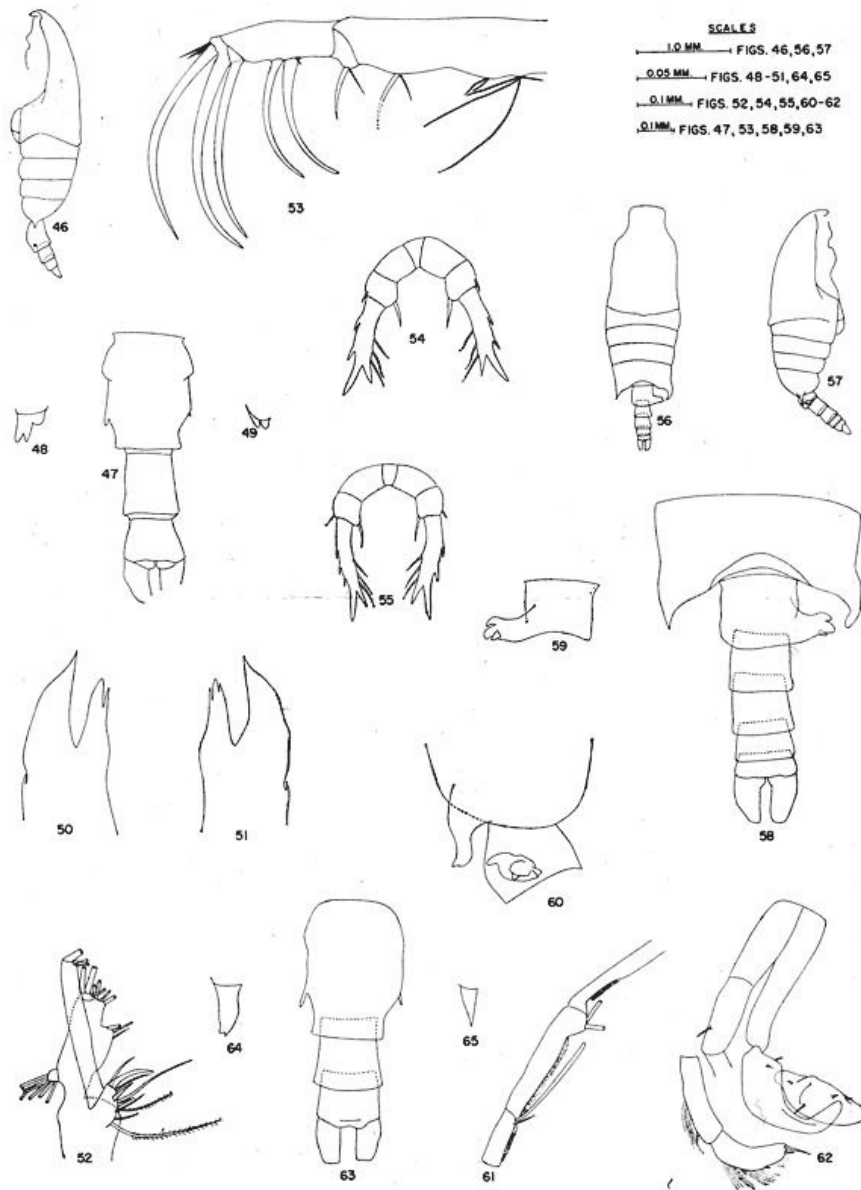
Tanaka, 1964: Fig. 227. *C. longimana* (Claus, 1863), Female. a. habitus (dorsal); b. pediger 5 & urosome (lateral); d. leg 5. Male. c. pediger 5 & urosome (dorsal); e. leg 5 (anterior).

Adapted from Razouls C., de Bovée F., Kouwenberg J. and Desreumaux N., 2005–2020. Diversity and Geographic Distribution of Marine Planktonic Copepods. Sorbonne University, CNRS. Available at <http://copepodes.obs-banyuls.fr/en>. [Accessed May 17, 2021].

Candacia longimana (Claus, 1863)*Candacia longimana* (Claus, 1863)

Original. *C. longimana* (Claus, 1863), Female, 2.80 mm, South China Sea (19°00'N 118°30'E): a/b. habitus (dorsal/lateral); c. leg 5 (posterior). Male, 2.80 mm, South China Sea (19°00'N 118°30'E): a/b. habitus (dorsal/lateral); c. leg 5 (posterior). Scales: a, b = 0.5 mm; c = 0.20 mm.

Candacia norvegica (Boeck, 1865) (Size: female, 2.28–3.63 mm; male, 2.60–3.25 mm)



Candacia norvegica (Boeck, 1865)

Grice & Jones, 1960. Figs. 46–65. *C. norvegica* (Boeck, 1865), Female. 46. habitus (lateral); 47. urosome (dorsal); 48/49. left/right spinous process on lateral margin of genital double-somite; 50/51. mandible gnathobase, biting blade; 52. maxillule; 53. maxilla; 54/55. leg 5; 63. urosome (dorsal); 64/65. left & right spinous processes of genital double-somite. Male. 56/57. habitus (dorsal/lateral); 58. pediger 4 to genital somite (dorsal); 59. genital somite (ventral). 60. pediger 4 to genital somite (lateral); 61. right antennule, segments 17–19; 62. leg 5 (posterior).

Adapted from Razouls C., de Bovée F., Kouwenberg J. and Desreumaux N., 2005–2020. Diversity and Geographic Distribution of Marine Planktonic Copepods. Sorbonne University, CNRS. Available at <http://copepodes.obs-banyuls.fr/en>. [Accessed May 18, 2021].

Candacia pachydactyla (Dana, 1849) (Size: female, 1.60–3.40 mm; male, 1.50–3.20 mm)

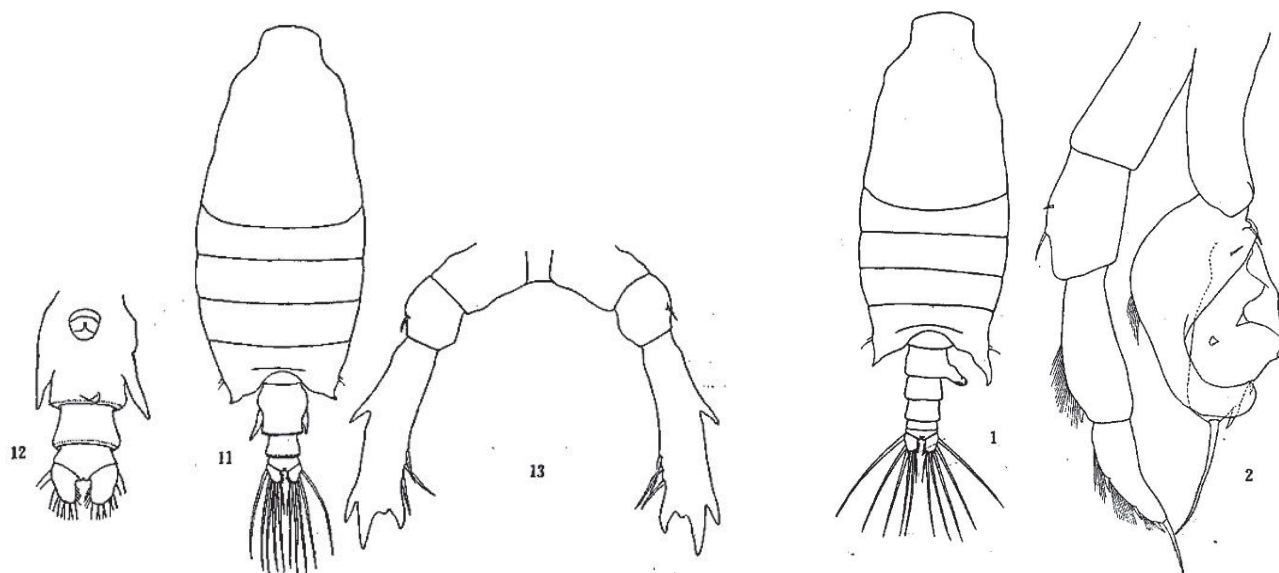


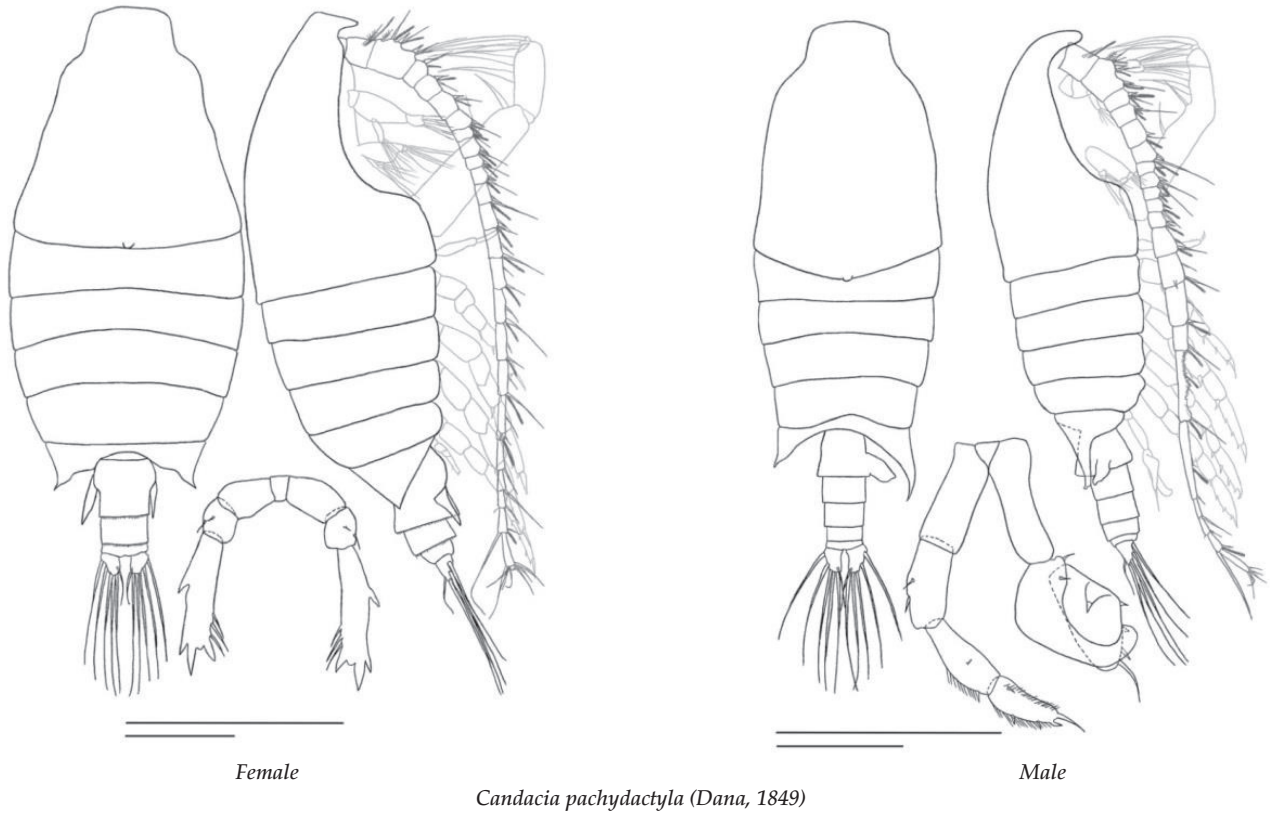
Plate 35

Candacia pachydactyla (Dana, 1849)

Plate 36

Chen & Zhang, 1965: pl. 35. Female. 11. habitus (dorsal); 12. urosome (ventral); 13. leg 5. Pl. 36. Male. 1. habitus (dorsal); 2. leg 5 (posterior).

Adapted from Razouls C., de Bovée F., Kouwenberg J. and Desreumaux N., 2005–2020. Diversity and Geographic Distribution of Marine Planktonic Copepods. Sorbonne University, CNRS. Available at <http://copepodes.obs-banyuls.fr/en>. [Accessed May 18, 2021].

Candacia pachydactyla (Dana, 1849)

Original. *C. pachydactyla* (Dana, 1849), Female, 2.60 mm, East China Sea (25°10'N 122°00'E): a/b. habitus (dorsal/lateral); c. leg 5 (posterior). Male, 2.44 mm, East China Sea (25°10'N 122°00'E): a/b. habitus (dorsal/lateral); c. leg 5 (posterior).

Candacia simplex (Giesbrecht, 1889) (Size: female, 1.48–2.35 mm; male, 1.54–2.20 mm)

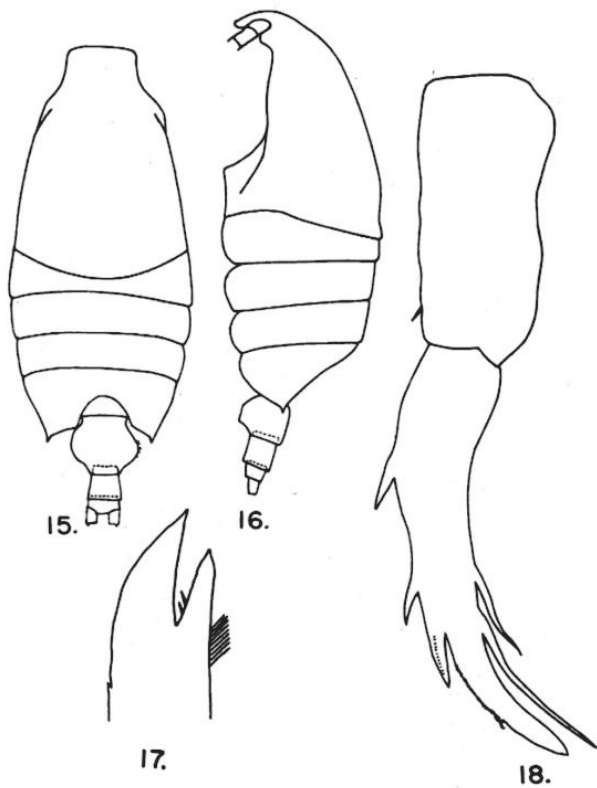


Plate 32

Candacia simplex (Giesbrecht, 1889)

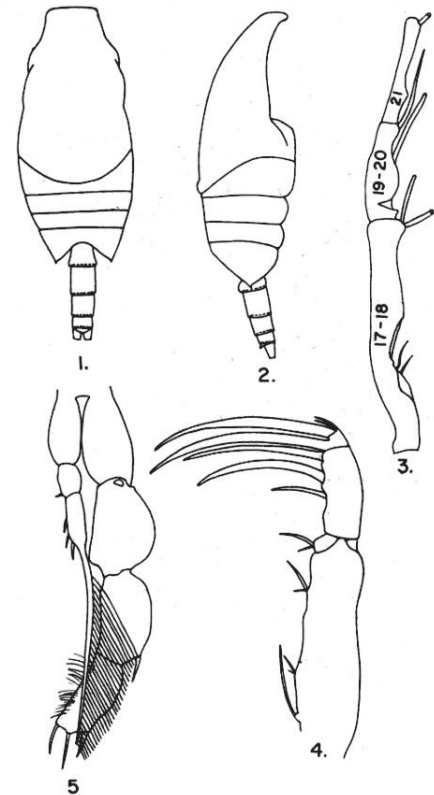
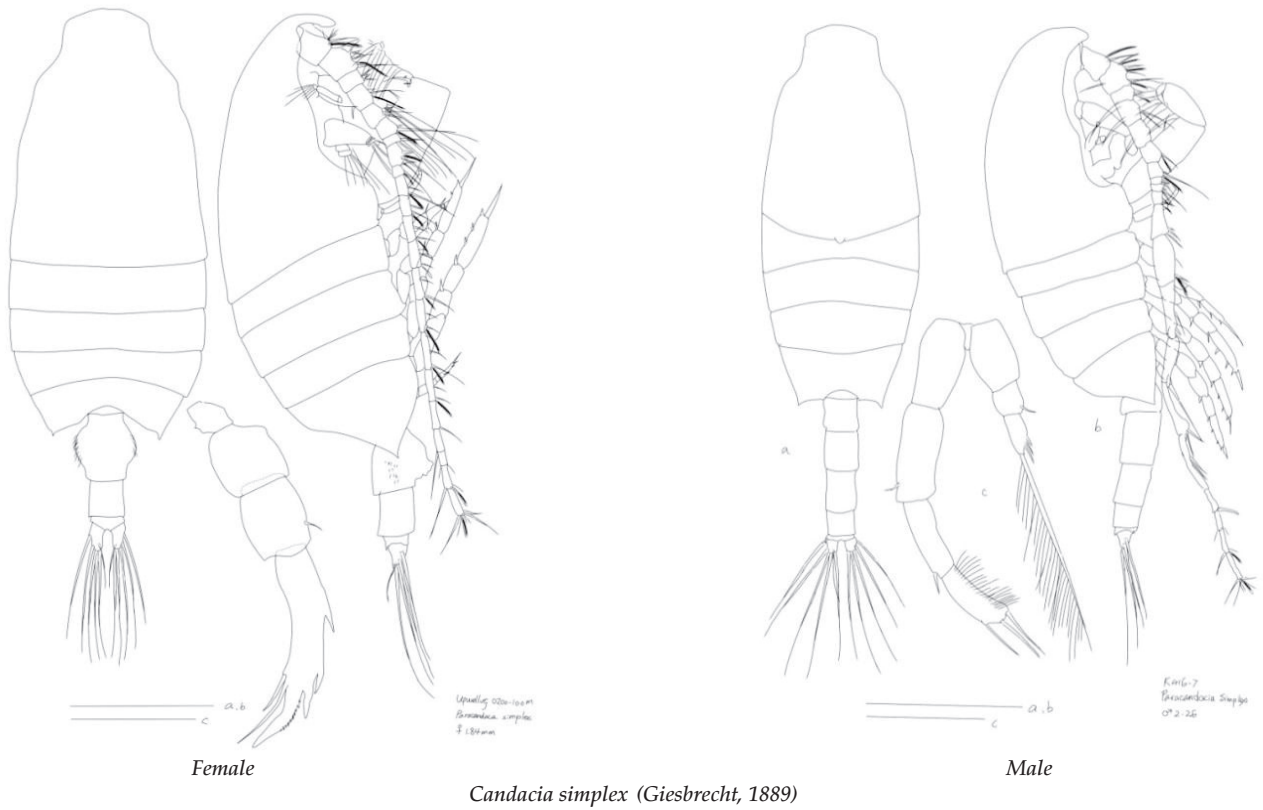


Plate 33

Grice, 1962: pl. 32. *C. simplex* (Giesbrecht, 1889), Female. 15/16. habitus (dorsal/lateral); 17. mandible biting edge; 18. leg 5. pl. 33. Male. 1/2. habitus (dorsal/lateral); 3. antennule segments 17–21; 4. maxilla; 5. leg 5 (anterior).

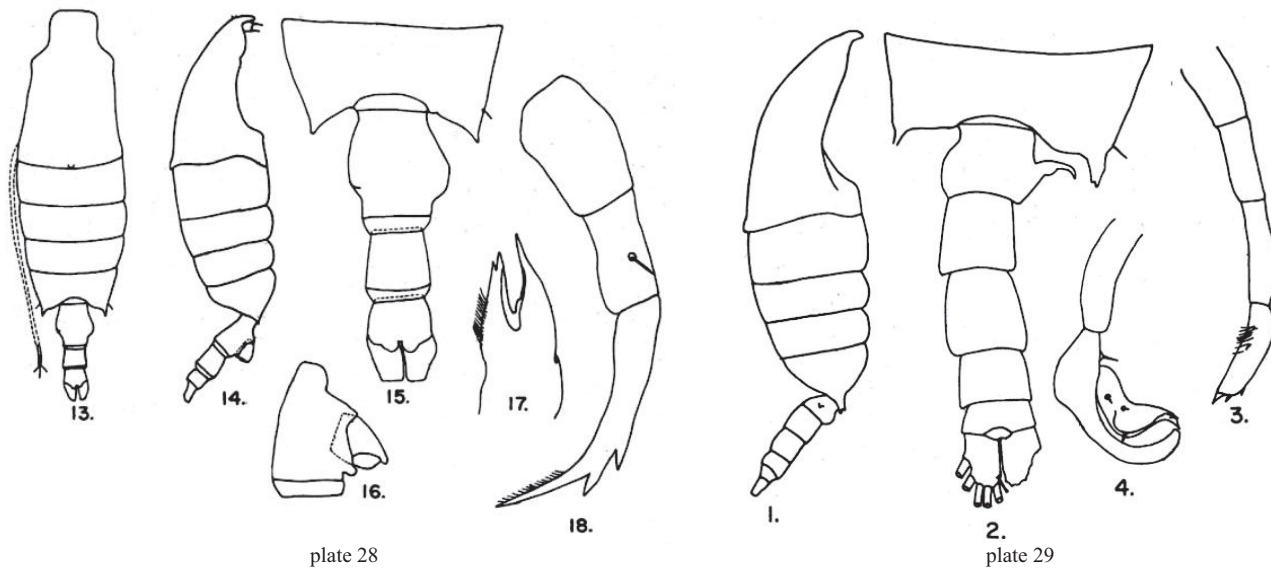
Adapted from Razouls C., de Bovée F., Kouwenberg J. and Desreumaux N., 2005–2020. Diversity and Geographic Distribution of Marine Planktonic Copepods. Sorbonne University, CNRS. Available at <http://copepodes.obs-banyuls.fr/en>. [Accessed May 18, 2021].

Candacia simplex (Giesbrecht, 1889)



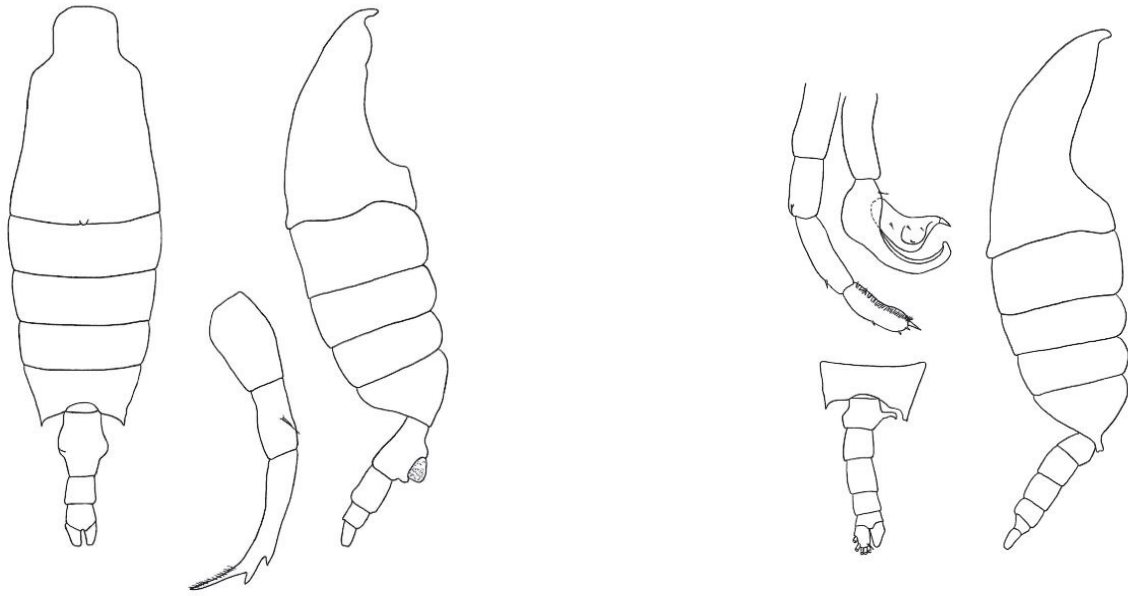
Original. *C. simplex* (Giesbrecht, 1889), Female, 1.84 mm, East China Sea (25°25'N 122°15'E): a/b. habitus (dorsal/lateral); c. leg 5 (posterior). Male, 1.84 mm, East China Sea (25°25'N 122°15'E): a/b. habitus (dorsal/lateral); c. leg 5 (posterior).

Candacia tenuimana (Giesbrecht, 1889) (Size: female, 1.90–2.40 mm; male, 2.00–2.25 mm)



Grice, 1962: pl. 28. *C. tenuimana* (Giesbrecht, 1889), Female. 13/14. habitus (dorsal/lateral); 15. pediger 5 & urosome (dorsal); 16. genital double-somite (lateral); 17. mandibular biting edge; 18. leg 5. Pl. 29. Male. 1. habitus (lateral); 2. pediger 5 & urosome (dorsal); 3. left leg 5; 4. right leg 5.

Adapted from Razouls C., de Bovée F., Kouwenberg J. and Desreumaux N., 2005–2020. Diversity and Geographic Distribution of Marine Planktonic Copepods. Sorbonne University, CNRS. Available at <http://copepodes.obs-banyuls.fr/en>. [Accessed May 18, 2021].

Candacia tenuimana (Giesbrecht, 1889)

Female

Candacia tenuimana (Giesbrecht, 1889)

Male

Original. *C. tenuimana* (Giesbrecht, 1889), female, 2.15 mm, South China Sea, habitus (dorsal/lateral), leg 5; male, 2.08 mm, South China Sea, habitus (lateral), pediger 5 and urosome, leg 5.

Candacia truncata (Dana, 1849) (Size: female, 1.50–2.32 mm; male, 1.60–2.42 mm)

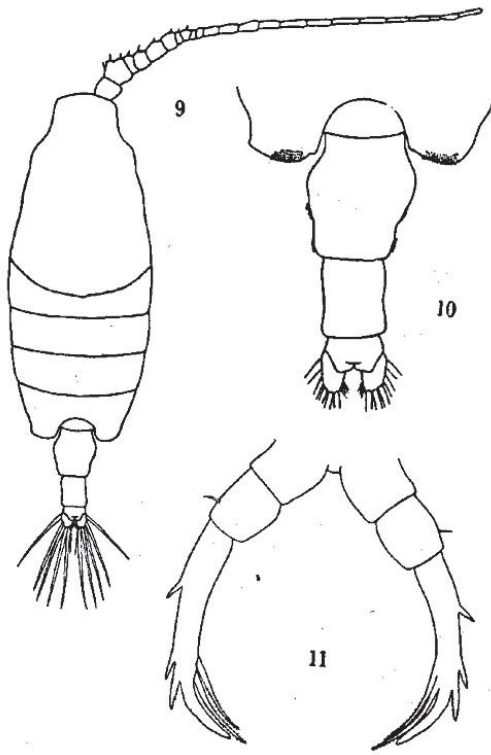


plate 36

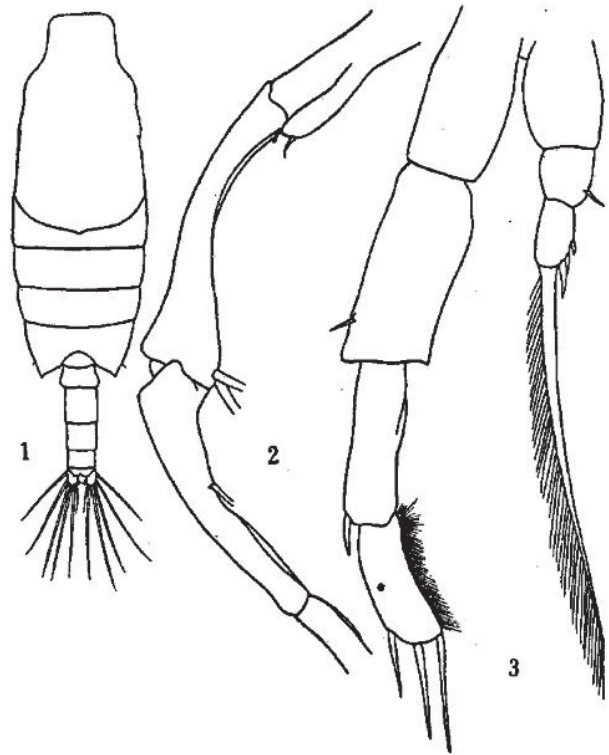
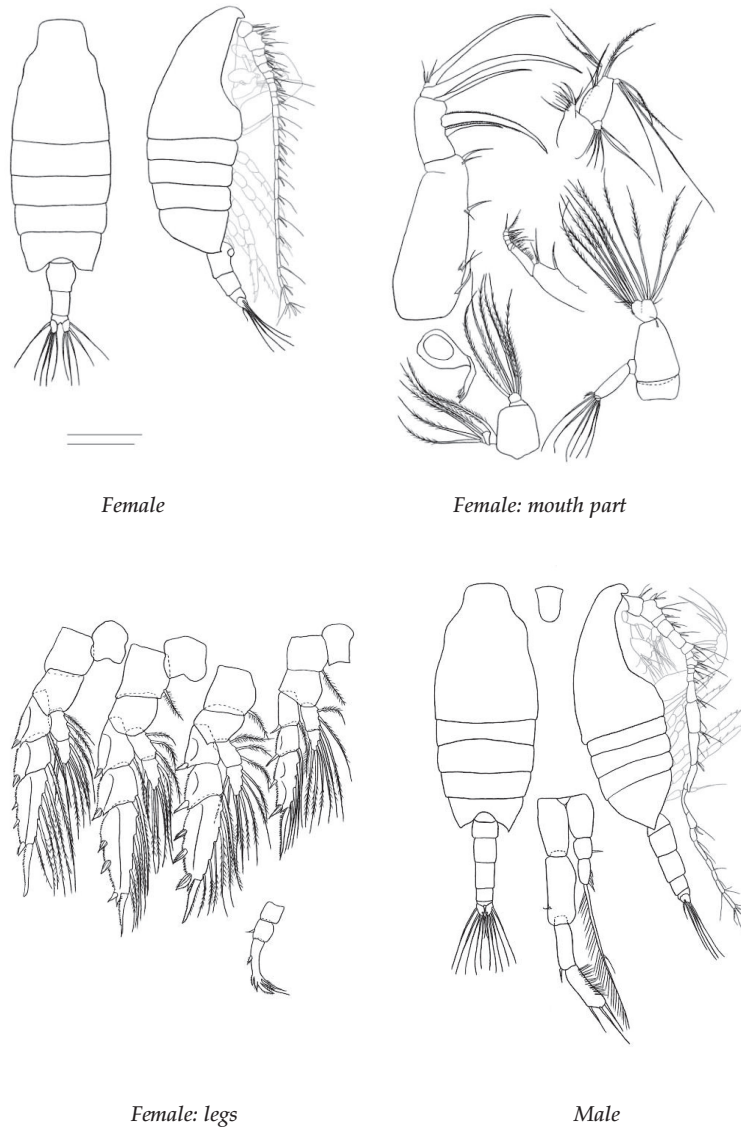


plate 37

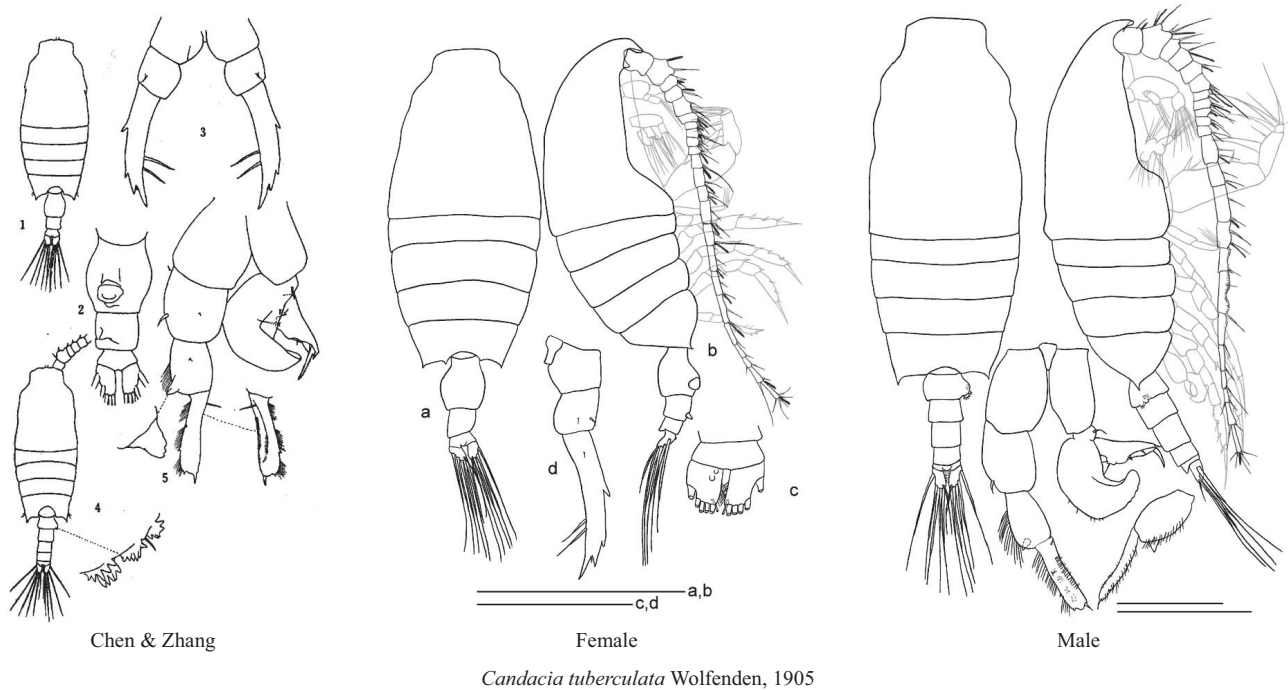
Candacia truncata (Dana, 1849)

Chen & Zhang, 1965: pl. 36. *C. truncata* (Dana, 1849), Female. 9. Habitus (dorsal); 10. Pediger 5 & urosome (dorsal); 11. Leg 5. Pl. 37. Male. 1. Habitus (dorsal); 2. Right antennule (segments 16–19); 3. Leg 5 (posterior).

Adapted from Razouls C., de Bovée F., Kouwenberg J. and Desreumaux N., 2005–2020. Diversity and Geographic Distribution of Marine Planktonic Copepods. Sorbonne University, CNRS. Available at <http://copepodes.obs-banyuls.fr/en>. [Accessed May 28, 2021].

Candacia truncata (Dana, 1849)*Candacia truncata* (Dana, 1849)

Original. *C. truncata* (Dana, 1849), Female, 2.10 mm, East China Sea (25°40'N, 122°51'E): a/b. habitus (dorsal/lateral); Female: mouth part, c. right antenna (posterior); d. right mandible (posterior); e. right mandibular gnathobase; f. right maxillule (posterior); g. right maxilla (posterior); h. right maxilliped (posterior); Female: legs, i-m. right leg 1–5 (posterior). Male, 2.06 mm, East China Sea (26°10'N, 120°49'E): n/o. habitus (dorsal/lateral); p. rostrum (ventral); q. leg 5 (posterior).

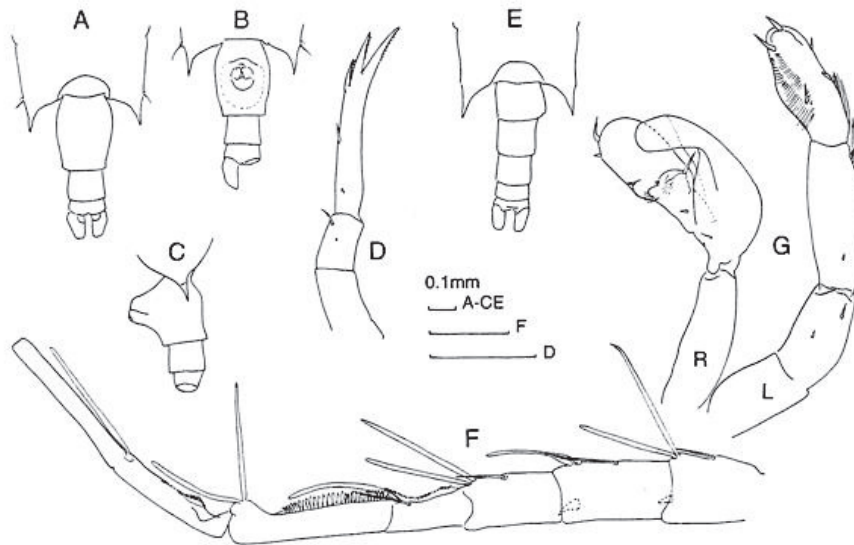
Candacia tuberculata Wolfenden, 1905 (Size: female, 1.56–2.40 mm; male, 1.60–2.29 mm)

Chen & Zhang, 1965: pl. 35. Female. 1. habitus (dorsal); 2. urosome (ventral). 3. leg 5. Male. 4. habitus (dorsal); 5. leg 5 (posterior).

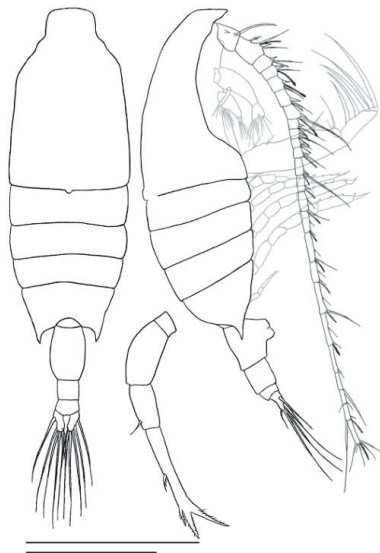
Adapted from Razouls C., de Bovée F., Kouwenberg J. and Desreumaux N., 2005–2020. Diversity and Geographic Distribution of Marine Planktonic Copepods. Sorbonne University, CNRS. Available at <http://copepodes.obs-banyuls.fr/en>. [Accessed May 28, 2021].

Original. *C. tuberculata* Wolfenden, 1905, Female, 1.94 mm, South China Sea: a/b. habitus (dorsal/lateral); c. caudal rami; d. leg 5 (posterior). Male, 1.76 mm, South China Sea: a/b. habitus (dorsal/lateral); c. leg 5 (posterior); d. left leg 5, segments 3/4 (anterior).

Candacia varicans (Giesbrecht, 1892) (Size: female, 1.98–2.55 mm; male, 1.91–2.45 mm)



Bradford-Grieve



Original

Candacia varicans (Giesbrecht, 1892)

Bradford-Grieve, 1999: Fig. 126. Female. A/B/C. pediger 5 & urosome (dorsal/ventral/lateral); D. leg 5. Male. E. pediger 5 & urosome (dorsal); F. segments of right geniculate antennule; G/leg 5 (posterior).

Adapted from Razouls C., de Bovée F., Kouwenberg J. and Desreumaux N., 2005–2020. Diversity and Geographic Distribution of Marine Planktonic Copepods. Sorbonne University, CNRS. Available at <http://copepodes.obs-banyuls.fr/en>. [Accessed May 28, 2021]

Original. *C. varicans* (Giesbrecht, 1892), Female, 2.38 mm, South China Sea (21°45'N 122°00'E): a/b. habitus (dorsal/lateral); c. leg 5 (posterior). Male, 2.18 mm, Pacific Ocean (0°0'N 149°33'W): a/b. habitus (dorsal/lateral).

Candacia worthingtoni Grice, 1981 (Size: female, 1.50–2.40 mm; male, 1.70–1.90 mm)

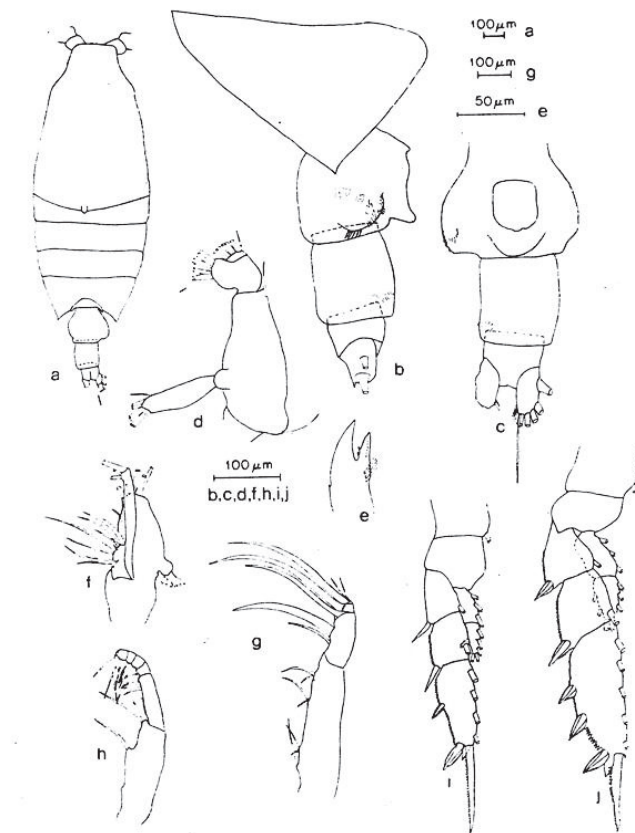


Fig. 1

Candacia worthingtoni Grice, 1981

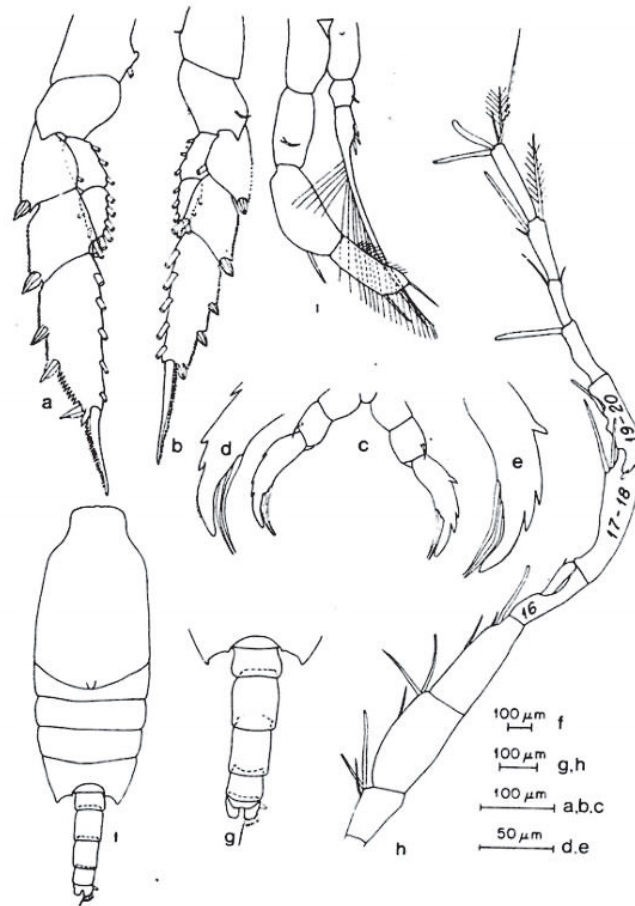


Fig. 2

Candacia worthingtoni Grice, 1981

Grice, 1981: Fig. 1. Female. a. habitus (dorsal); b/c. urosome (lateral/ventral); d. antenna; e. mandible cutting edge; f. maxillule; g. maxilla; h. maxilliped; i/j. legs 1 & 2. Fig. 2. Female. a/b. legs 3/4; c. leg 5 (posterior); d/e. terminal part of left/right leg 5. Male. f. habitus (dorsal); g. urosome (dorsal); h. antennule, distal end; i. leg 5 (posterior).

Adapted from Razouls C., de Bovée F., Kouwenberg J. and Desreumaux N., 2005–2020. Diversity and Geographic Distribution of Marine Planktonic Copepods. Sorbonne University, CNRS. Available at <http://copepodes.obs-banyuls.fr/en>. [Accessed May 18, 2021].