



## Key to the species of Augaptilidae Centraugaptilus occurring in the China Seas

Chang-tai Shih  
*National Taiwan Ocean University, ctshih@mail.ntou.edu.tw*

Qing-Chao Chen  
*South China Sea Institute of Oceanology*

Yang-Chi Lan  
*Fisheries Research Institute*

Shih-Hui Hsiao  
*National Taipei University of Education*

Chi-Yu Weng  
*Institute of Oceanography, National Taiwan University/Ocean Data Bank of the Ministry of National Science and Technology Council, Taiwan*

Follow this and additional works at: <https://jmstt.ntou.edu.tw/journal>



Part of the [Fresh Water Studies Commons](#), [Marine Biology Commons](#), [Ocean Engineering Commons](#), [Oceanography Commons](#), and the [Other Oceanography and Atmospheric Sciences and Meteorology Commons](#)

### Recommended Citation

Shih, Chang-tai; Chen, Qing-Chao; Lan, Yang-Chi; Hsiao, Shih-Hui; and Weng, Chi-Yu (2022) "Key to the species of Augaptilidae Centraugaptilus occurring in the China Seas," *Journal of Marine Science and Technology*. Vol. 30: Iss. 5, Article 21.

DOI: 10.51400/2709-6998.2612

Available at: <https://jmstt.ntou.edu.tw/journal/vol30/iss5/21>

This Review-Taxonomic Index is brought to you for free and open access by Journal of Marine Science and Technology. It has been accepted for inclusion in Journal of Marine Science and Technology by an authorized editor of Journal of Marine Science and Technology.

## REVIEW-TAXONOMIC INDEX

# Key to the Species of Augaptilidae *Centraugaptilus* Occurring in the China Seas

Chang-tai Shih <sup>a,\*</sup>, Qing-Chao Chen <sup>b</sup>, Yang-Chi Lan <sup>c</sup>, Shih-Hui Hsiao <sup>d</sup>, Chi-Yu Weng <sup>e</sup>

<sup>a</sup> National Taiwan Ocean University, Taiwan

<sup>b</sup> South China Sea Institute of Oceanology, China

<sup>c</sup> Fisheries Research Institute, Taiwan

<sup>d</sup> National Taipei University of Education, Taiwan

<sup>e</sup> Institute of Oceanography, National Taiwan University/Ocean Data Bank of the Ministry of National Science and Technology Council, Taiwan

*Centraugaptilus horridus*(2a/4a/f), *porcellus*(3a/5a/f), *rattrayi*(3b/5b/f)

1a	Female .....	2
1b	Male .....	4
2a/1a	In lateral view, front of head strongly protruded, forming a hood-like protrusion. Rostral filaments parallel .....	<i>Centraugaptilus horridus</i>
2b	In lateral view, front of head not protruded, forming a rounded profile. Rostral filaments diverged.....	3
3a/2b	Leg 1 endopod 2-segmented. Leg 5 basis with a seta on distal part; exopod segment 3: outer margin convexed, length/width ratio 1.4.....	<i>Centraugaptilus porcellus</i>
3b	Leg 1 endopod 3-segmented. Leg 5 basis naked; exopod segment 3: outer margin relatively straight, length/width ratio 2.0.....	<i>Centraugaptilus rattrayi</i>
4a/1b	Front of head hood-like. Left leg 5 exopod segment 2 with concaved inner margin; exopod segment 3 with 1 terminal and 2 outer spines. Right leg 5, exopod segment 2/segment 3 length ratio 1.5.....	<i>Centraugaptilus horridus</i>
4b	Front of head rounded. Left leg 5 exopod segment 2 with convexed inner margin; exopod segment 3 with 1 terminal and 1 outer and 1 inner spines. Right leg 5, exopod segment 2/segment 3 length ratio greater than 2.....	5
5a/4b	Leg 5 basis with a seta on distal part; distal margin of exopod segment 2 overlapping exopod segment 3 .....	<i>Centraugaptilus porcellus</i>
5b	Leg 5 basis without seta on distal part; distal margin of exopod segment 2 not overlapping exopod segment 3 .....	<i>Centraugaptilus rattrayi</i>

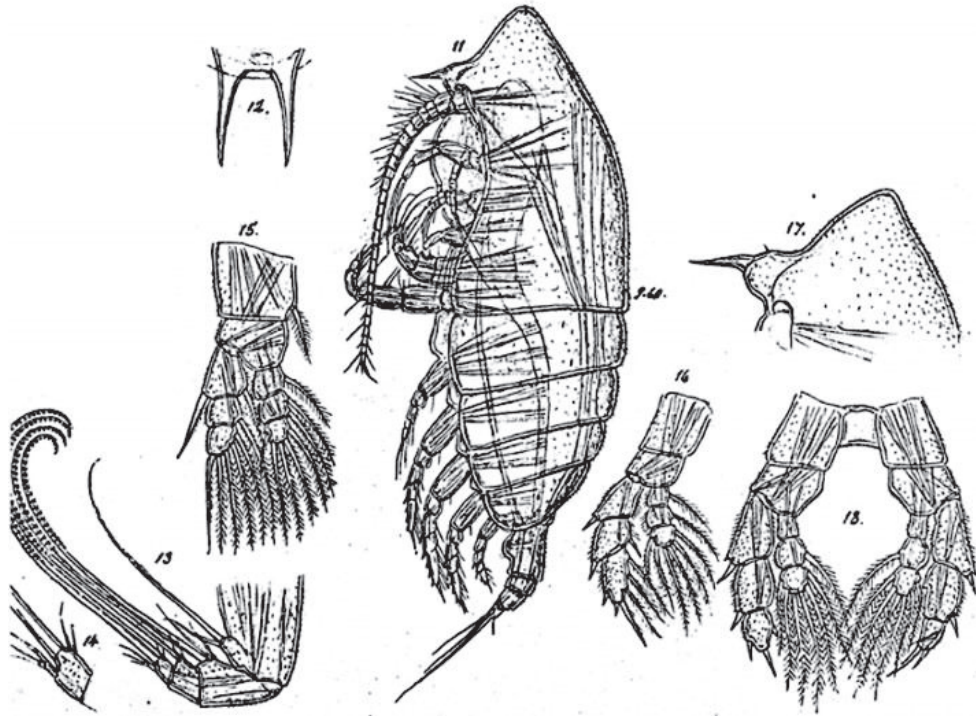
Available online 14 November 2022

\* Corresponding author.

E-mail address: [ctshih@mail.ntou.edu.tw](mailto:ctshih@mail.ntou.edu.tw) (C.-t. Shih).



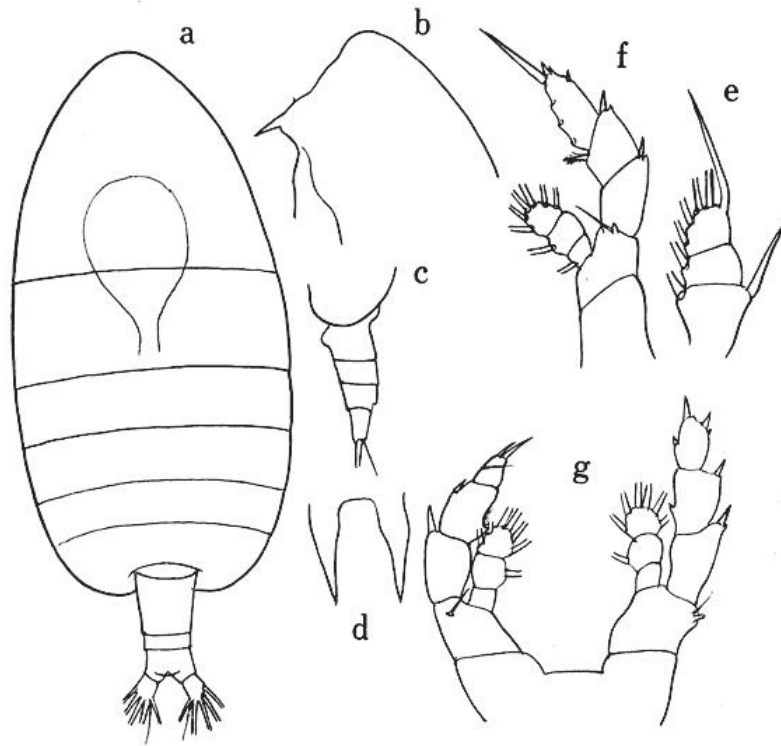
*Centraugaptilus horridus* (Farran, 1908) (Size: female, 5.60–10.20 mm; male, 8.33–8.40 mm)



*Centraugaptilus horridus* (Farran, 1908)

Sars, 1924. Pl.CVII, figs.11-18. *Centraugaptilus horridus* (Farran, 1908), Female: 11, habitus (dorsal); 12, rostrum; 13, distal portion of maxilliped; 14, terminal segment of maxilliped (enlarged); 15, leg 1; 16, leg 5. Male: 17, forehead (lateral); 18, leg 5.

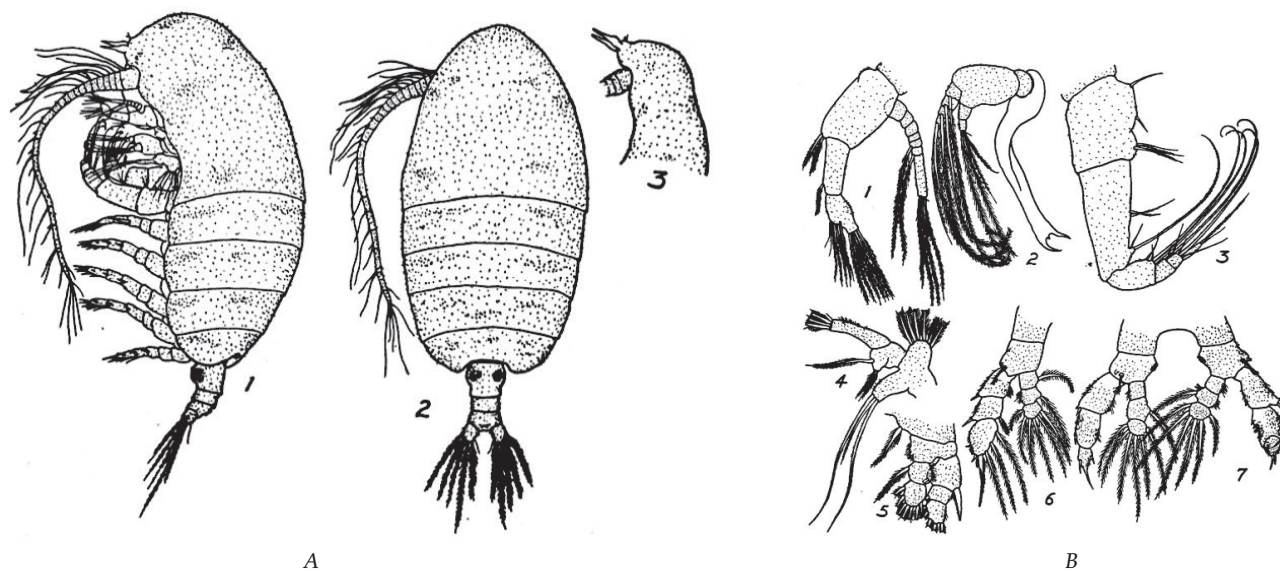
Adapted from Razouls C., de Bovée F., Kouwenberg J. and Desreumaux N., 2005–2020. - Diversity and Geographic Distribution of Marine Planktonic Copepods. Sorbonne University, CNRS. Available at <http://copepodes.obs-banyuls.fr/en> Accessed May 20, 2021]

*Centraugaptilus horridus* (Farran, 1908)*Centraugaptilus horridus* (Farran, 1908)

Tanaka, 1964, Fig.215. *Centraugaptilus horridus* (Farran, 1908), Female: a, habitus (dorsal); b, forehead (lateral); c, pediger 5 and urosome (lateral); d, rostrum (frontal); e, exopod of leg 1; f, leg 5. Note: The urosome segments and furca are in the proportional lengths as 42:13:29:16 = 100. A1 reaches back to the posterior margin of the pediger 3. Male: g, leg 5. Note: The urosome segments and furca are in the proportional lengths as 32:13:13:10:26:16 = 100. Grasping of antennule on the left side.

Adapted from Razouls C., de Bovée F., Kouwenberg J. and Desreumaux N., 2005–2020. - Diversity and Geographic Distribution of Marine Planktonic Copepods. Sorbonne University, CNRS. Available at <http://copepodes.obs-banyuls.fr/en>. Accessed May 20, 2021].

*Centraugaptilus porcellus* Johnson, 1936 (Size: female, 5.40–6.20 mm; male, 5.75 mm)



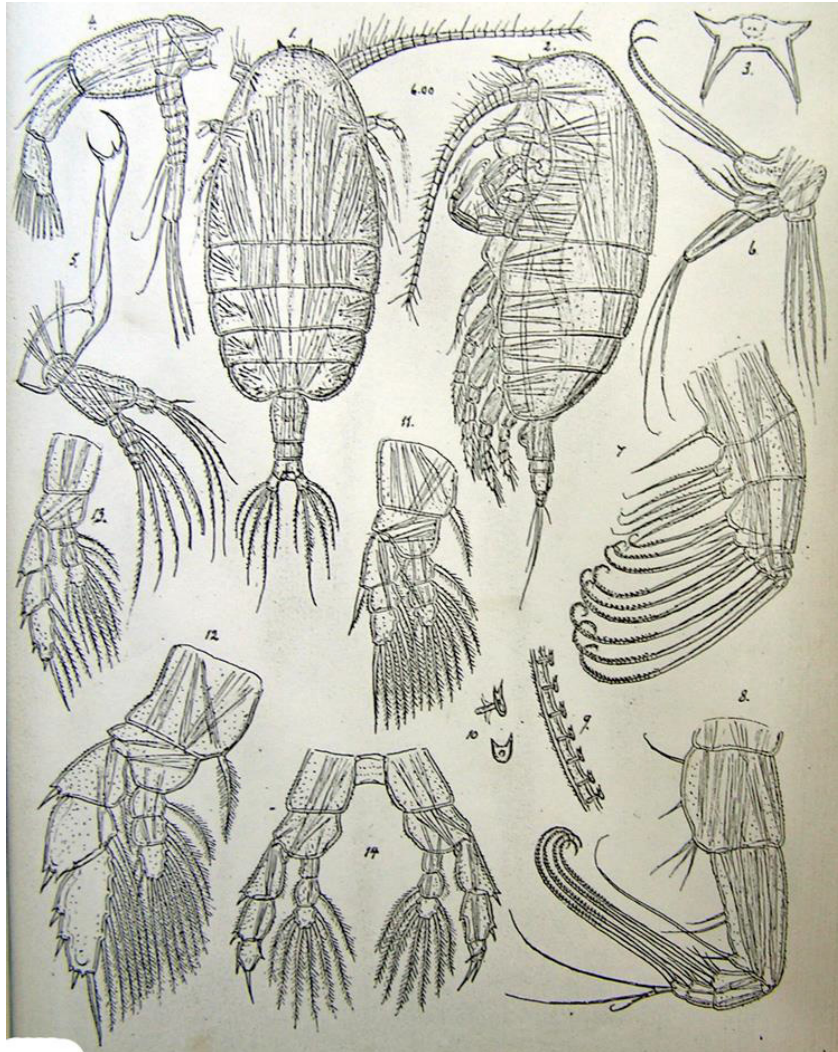
*Centraugaptilus porcellus* Johnson, 1936

Johnson, 1936. Fig.A. 1–3. *Centraugaptilus porcellus* Johnson, 1936, Female (from 49°20'N, 174°31'W): 1/2, habitus (lateral/dorsal). Nota: The surface of the body and appendages covered with short spinules. Rostrum with 2 heavy, widely separated, and diverging prongs, not visible dorsally, Labrum very large and armed with a posterior tuft of short rigid spinules; Urosome very short, about 1/4 and 1/5 the length of prosome; Genital double-somite about as long as the 2 abdominal segments combined; Caudal rami about equal in length to the anal somite, antennule 24-segmented, extending to about the middle of the pediger 3. Male: forehead (lateral).Note: Body covered with short spinules as in female; Urosome 5-segmented. A1 reaching nearly to end of 5th thoracic segment. Left A1 geniculated near the end. Fig.B. Female: 1, antenna; 2, mandible; 3, right maxilliped; 4, maxillule; 5, leg 1; 6, leg 5. Male: 7, leg 5. Note: Mouthparts as in female. leg 1 as in female but with an indistinct line suggesting an imperfect division of the 2nd endopod segment; leg 5 asymmetrical.

Adapted from Razouls C., de Bovée F., Kouwenberg J. and Desreumaux N., 2005–2020. - Diversity and Geographic Distribution of Marine Planktonic Copepods. Sorbonne University, CNRS. Available at <http://copepodes.obs-banyuls.fr/en>. Accessed May 20, 2021].



*Centraugaptilus rattrayi* (T. Scott, 1894) (Size: female, 4.70–6.18 mm; male, 4.80–5.81 mm)



*Centraugaptilus rattrayi* (T. Scott, 1894)

Sars, 1924. Pl.106, figs.1-19. *Centraugaptilus rattrayi* (T. Scott, 1894), Female: 1/2, habitus (dorsal/lateral); 3, rostrum; 4, antenna; 5, mandible; 6, maxillule; 7, maxilla; 8, maxilliped; 9, portion of distal setae of maxilliped (enlarged); 10, scutellum-like bud (lateral and facial, enlarged); 11, leg 1; 12, leg 3; 13, leg 5. Male: 14, leg 5  
 Adapted from Razouls C., de Bovée F., Kouwenberg J. and Desreumaux N., 2005–2020. - Diversity and Geographic Distribution of Marine Planktonic Copepods. Sorbonne University, CNRS. Available at <http://copepodes.obs-banyuls.fr/en>. Accessed May 20, 2021].