



Key to the species of Arietellidae Metacalanus occurring in the China Seas

Chang-tai Shih
National Taiwan Ocean University, ctshih@mail.ntou.edu.tw

Qing-Chao Chen
South China Sea Institute of Oceanology

Yang-Chi Lan
Fisheries Research Institute

Shih-Hui Hsiao
National Taipei University of Education

Chi-Yu Weng
Institute of Oceanography, National Taiwan University/Ocean Data Bank of the Ministry of National Science and Technology Council, Taiwan

Follow this and additional works at: <https://jmstt.ntou.edu.tw/journal>



Part of the [Fresh Water Studies Commons](#), [Marine Biology Commons](#), [Ocean Engineering Commons](#), [Oceanography Commons](#), and the [Other Oceanography and Atmospheric Sciences and Meteorology Commons](#)

Recommended Citation

Shih, Chang-tai; Chen, Qing-Chao; Lan, Yang-Chi; Hsiao, Shih-Hui; and Weng, Chi-Yu (2022) "Key to the species of Arietellidae Metacalanus occurring in the China Seas," *Journal of Marine Science and Technology*. Vol. 30: Iss. 5, Article 18.

DOI: 10.51400/2709-6998.2609

Available at: <https://jmstt.ntou.edu.tw/journal/vol30/iss5/18>

This Review-Taxonomic Index is brought to you for free and open access by Journal of Marine Science and Technology. It has been accepted for inclusion in Journal of Marine Science and Technology by an authorized editor of Journal of Marine Science and Technology.

REVIEW-TAXONOMIC INDEX

Key to the Species of Arietellidae *Metacalanus* Occurring in the China Seas

Chang-tai Shih ^{a,*}, Qing-Chao Chen ^b, Yang-Chi Lan ^c, Shih-Hui Hsiao ^d, Chi-Yu Weng ^e

^a National Taiwan Ocean University, Taiwan

^b South China Sea Institute of Oceanology, China

^c Fisheries Research Institute, Taiwan

^d National Taipei University of Education, Taiwan

^e Institute of Oceanography, National Taiwan University/Ocean Data Bank of the Ministry of National Science and Technology Council, Taiwan

Metacalanus acutioperculum(3b/5b/f), *aurivilli*(3a/5a/f), *curvirostris*(2a/4a/f)

1a	Female	2
1b	Male	4
2a/1a	Leg 5 segment 2 with 1 terminal seta.....	<i>Metacalanus curvirostris</i>
2b	Leg 5 segment 2 with 2 setae: 1 inner seta near distal end and 1 terminal seta	3
3a/2b	Anal operculum crescent shaped	<i>Metacalanus aurivilli</i>
3b	Anal operculum acutely triangular	<i>Metacalanus acutioperculum</i>
4a/1b	Leg 5: exopod segment 2 without outer seta; exopod segment 3 length 3 times width	<i>Metacalanus curvirostris</i>
4b	Leg 5: exopod segment 2 with 1 outer seta; exopod segment 3 length 2 times width	5
5a/4b	Leg 5: exopod segment 2 outer seta as long as the segment; exopod segment 3 terminal spine serrate on both margins	<i>Metacalanus aurivilli</i>
5b	Leg 5: exopod segment 2 outer seta shorter than the segment, exopod segment 3 terminal spine, both margins smooth or lightly serrated.....	<i>Metacalanus acutioperculum</i>

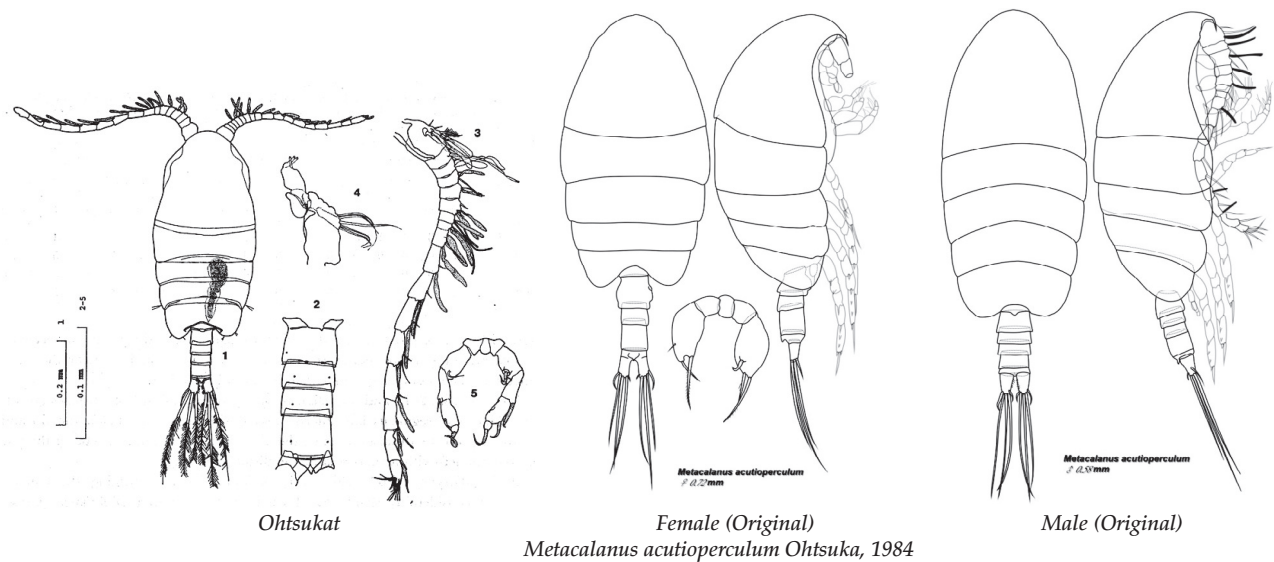
Available online 14 November 2022

* Corresponding author.

E-mail address: ctshih@mail.ntou.edu.tw (C.-t. Shih).



Metacalanus acutioperculum Ohtsuka, 1984 (Size: female, 0.73 mm; male, 0.63 mm)

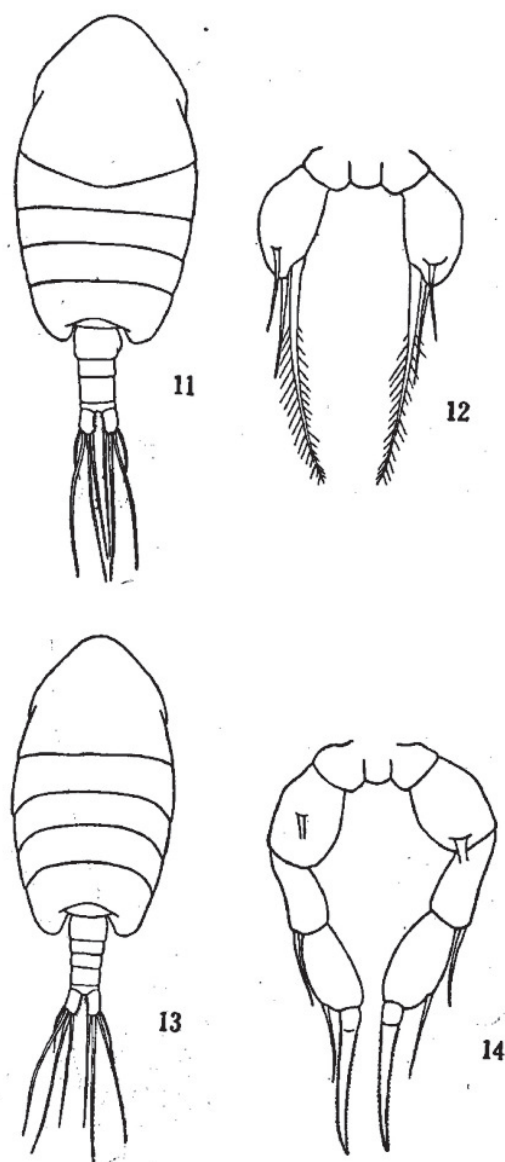


Ohtsuka, 1984. Fig. 3. *Metacalanus acutioperculum* Ohtsuka, 1984, Male. 1. habitus (dorsal); 2. urosome (dorsal, caudal rami omitted); 3. left antennule; 4. maxillule; 5. leg 5 (posterior).

Adapted from Razouls C., de Bovée F., Kouwenberg J. and Desreumaux N., 2005–2020. Diversity and Geographic Distribution of Marine Planktonic Copepods. Sorbonne University, CNRS. Available at <http://copepodes.obs-banyuls.fr/en> [Accessed May 28, 2021].

Original. *Metacalanus acutioperculum* Ohtsuka, 1984, Female, 0.72 mm, South China Sea. Male, 0.58 mm, South China Sea.

Metacalanus aurivilli Cleve, 1901 (Size: female, 0.53–0.65 mm; 0.50–0.69 mm)



Metacalanus aurivilli Cleve, 1901

Chen & Zhang, 1965: pl. 34. *Metacalanus aurivilli* Cleve, 1901, Female (from East China Sea); 11. Habitus (dorsal); 12. leg 5 (posterior). Male. 13. habitus (dorsal); 14. leg 5 (posterior).

Adapted from Razouls C., de Bovée F., Kouwenberg J. and Desreumaux N., 2005–2020. Diversity and Geographic Distribution of Marine Planktonic Copepods. Sorbonne University, CNRS. Available at <http://copepodes.obs-banyuls.fr/en> [Accessed May 17, 2020].

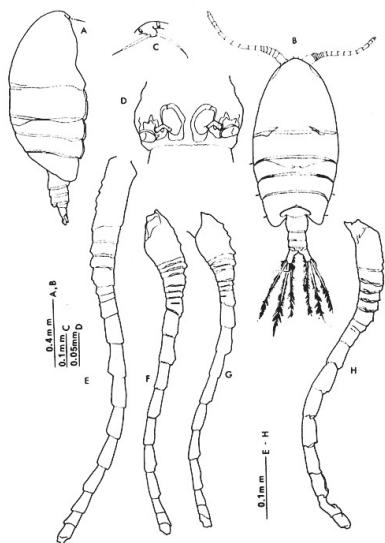
Metacalanus curvirostris Ohtsuka, 1985 (Size: female, 1.19 mm; male, 0.89 mm)

Fig. 10

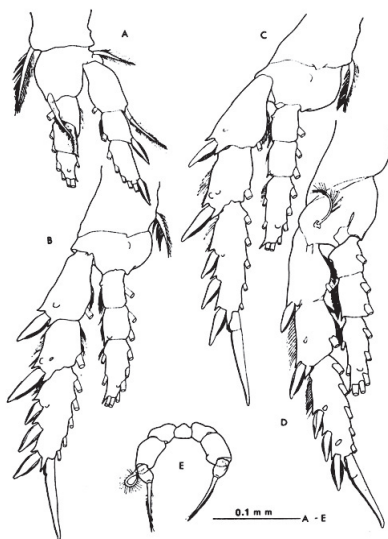


Fig. 11

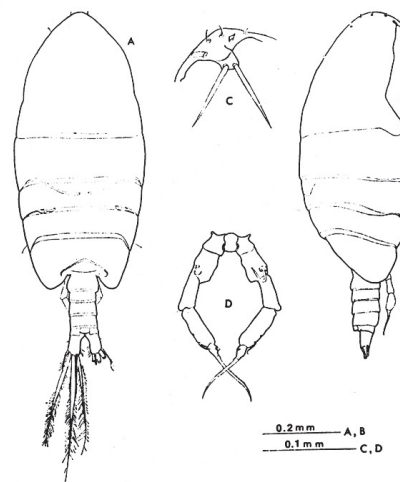
Metacalanus curvirostris Ohtsuka, 1985

Fig. 12

Ohtsuka, 1985: Fig. 10. Female (from Tanabe Bay, Honshu). A/B. habitus (lateral/dorsal); C. rostrum; D. genital double-somite (showing seminal receptacle, ventral); E. left antennule; F. right antennule. Male. G. right antennule; H. left antennule. All setae and aesthetascs of antennule omitted. Fig. 11. Female. A-C. legs 1–3 (anterior); D. leg 4 (posterior); E. leg 5 (anterior). Fig. 12. Male. A/B habitus (dorsal/lateral); C. rostrum; D. leg 5 (posterior).

Adapted from Razouls C., de Bovée F., Kouwenberg J. and Desreumaux N., 2005–2020. Diversity and Geographic Distribution of Marine Planktonic Copepods. Sorbonne University, CNRS. Available at <http://copepodes.obs-banyuls.fr/en> [Accessed May 17, 2021].