



## Key to the species of Aetideidae Undeuchaeta occurring in the China Seas

Chang-tai Shih  
*National Taiwan Ocean University, ctshih@mail.ntou.edu.tw*

Qing-Chao Chen  
*South China Sea Institute of Oceanology*

Yang-Chi Lan  
*Fisheries Research Institute*

Shih-Hui Hsiao  
*National Taipei University of Education*

Chi-Yu Weng  
*Institute of Oceanography, National Taiwan University/Ocean Data Bank of the Ministry of National Science and Technology Council, Taiwan*

Follow this and additional works at: <https://jmstt.ntou.edu.tw/journal>



Part of the [Fresh Water Studies Commons](#), [Marine Biology Commons](#), [Ocean Engineering Commons](#), [Oceanography Commons](#), and the [Other Oceanography and Atmospheric Sciences and Meteorology Commons](#)

### Recommended Citation

Shih, Chang-tai; Chen, Qing-Chao; Lan, Yang-Chi; Hsiao, Shih-Hui; and Weng, Chi-Yu (2022) "Key to the species of Aetideidae Undeuchaeta occurring in the China Seas," *Journal of Marine Science and Technology*. Vol. 30: Iss. 5, Article 15.

DOI: 10.51400/2709-6998.2606

Available at: <https://jmstt.ntou.edu.tw/journal/vol30/iss5/15>

This Review-Taxonomic Index is brought to you for free and open access by Journal of Marine Science and Technology. It has been accepted for inclusion in Journal of Marine Science and Technology by an authorized editor of Journal of Marine Science and Technology.

REVIEW-TAXONOMIC INDEX

# Key to the Species of Aetideidae *Undeuchaeta* Occurring in the China Seas (Follow Markhaseva, 1996)

Chang-tai Shih <sup>a,\*</sup>, Qing-Chao Chen <sup>b</sup>, Yang-Chi Lan <sup>c</sup>, Shih-Hui Hsiao <sup>d</sup>, Chi-Yu Weng <sup>e</sup>

<sup>a</sup> National Taiwan Ocean University, Taiwan

<sup>b</sup> South China Sea Institute of Oceanology, China

<sup>c</sup> Fisheries Research Institute, Taiwan

<sup>d</sup> National Taipei University of Education, Taiwan

<sup>e</sup> Institute of Oceanography, National Taiwan University/Ocean Data Bank of the Ministry of National Science and Technology Council, Taiwan

*Undeuchaeta incisa* (3b/7a/f), *intermedia* (4a/6a/f), *major* (3a/7b/f), *plumosa* (4b/6b/f)

1a	Female .....	2
1b	Male .....	5
2a/1a	Cephalosome with crest .....	3
2b	Cephalosome without crest .....	4
3a/2a	Posterior corners of pedigerous somite 5 nearly symmetrically extended and triangular both in lateral and dorsal views. Genital double-somite asymmetrical, right margin with a small spine. Length less than 5.5 mm.....	<i>Undeuchaeta major</i>
3b	Posterior corners of pediger 5 not symmetrically extended, right corner slightly shorter and rounded, left corner triangular. Genital double-somite asymmetrical, dorsal surface with a small process near middle of right margin. Length more than 5.5 mm.....	<i>Undeuchaeta incisa</i>
4a/2b	Posterior corners of pediger 5 always triangular in both dorsal and lateral views. Genital double-somite with a spine on dorsal surface near right margin.....	<i>Undeuchaeta intermedia</i>
4b	Posterior corners of pediger 5 not always triangular, right corners usually rounded. Genital double-somite with spine on dorsal surface near right margin.....	<i>Undeuchaeta plumosa</i>
5a/1b	Cephalosome without crest .....	6
5b	Cephalosome with crest .....	7
6a/5a	Left leg 5, endopod nearly reaching distal margin of exopod segment 2; exopod segment 3 with several batches of short setules on inner margin.....	<i>Undeuchaeta intermedia</i>
6b	Left leg 5, endopod reaching distal margin of exopod segment 1; exopod segment 3 with a batch of long setules on distal third of inner margin .....	<i>Undeuchaeta plumosa</i>
7a/5b	Left leg 5 exopod segment 2, twice or more longer than wide, outer and inner margins nearly parallel, inner distal corner expanded forming a triangular process.....	<i>Undeuchaeta incisa</i>
7b	Left leg 5 exopod segment 2, 1.5 times or less as long as wide, inner margin undulating and forming a semicircular outgrowth on distal half.....	<i>Undeuchaeta major</i>

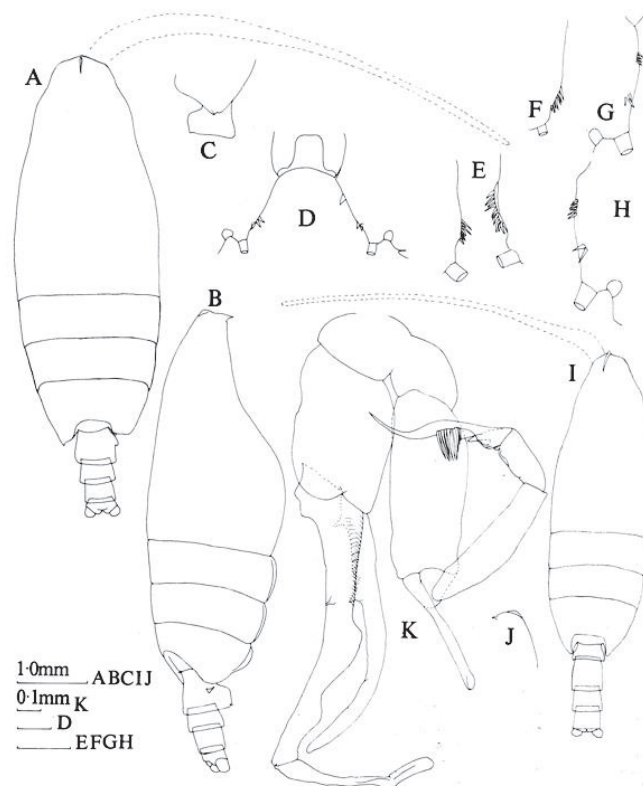
Available online 14 November 2022

\* Corresponding author.

E-mail address: [ctshih@mail.ntou.edu.tw](mailto:ctshih@mail.ntou.edu.tw) (C.-t. Shih).



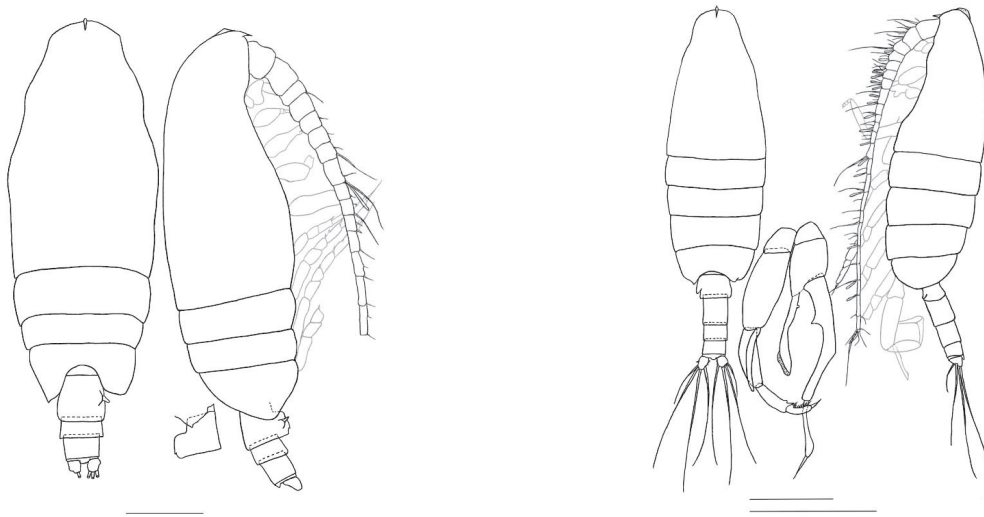
*Undeuchaeta incisa* Esterly, 1906 (Size: female: 5.36–6.66 mm; male: 4.08–5.58 mm)



*Undeuchaeta incisa* Esterly, 1906

Bradford & Jillett, 1980: 81, Fig. 56. Female: A/B, habitus (dorsal/lateral); C, left side of posterior of prosome; D-H, inner edge of basipod 1 of P4 (different specimens from different stations. Male: I, habitus (dorsal); J, forehead (lateral left side); K, leg 5 (anterior).

Razouls C., Desreumaux N., Kouowenberg J. and de Bovée F., 2005–2021. Biodiversity of marine planktonic Copepods (morphology, geographical distribution and biological data). Sorbonne University, CNRS. Available at <http://copepodes.obs-banyuks.fr/en>. [Accessed April 07, 2021].

*Undeuchaeta incisa* Esterly, 1906

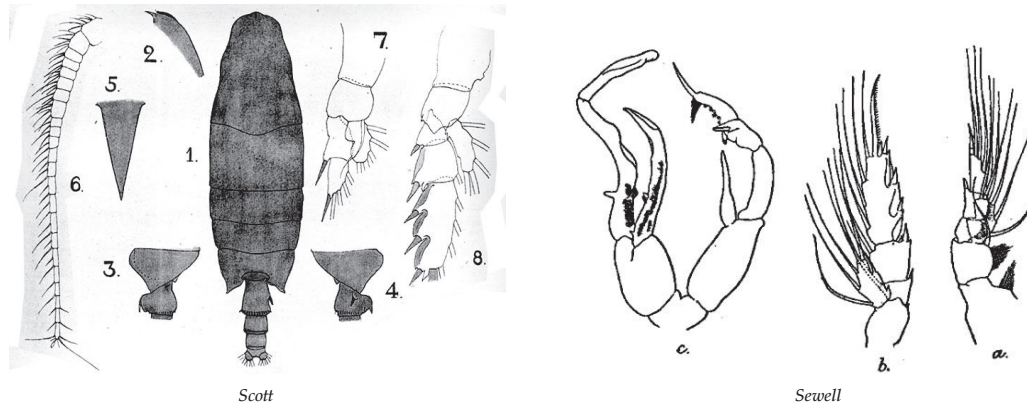
Female

Male

*Undeuchaeta incisa* Esterly, 1906

Original. *Undeuchaeta incisa* Esterly, 1906. Female, 5.24 mm, South China Sea, (8°33'N, 115°41'E), a/b habitus (dorsal/lateral); c. genital double-somite (left lateral). Male, 4.24 mm, East of Taiwan (23°38'N, 123°01'E), a/b, habitus (dorsal/lateral); c. leg 5 (posterior).

*Undeuchaeta intermedia* A. Scott, 1909 (size: female: 3.48–4.50 mm; male: 3.62–3.69 mm)

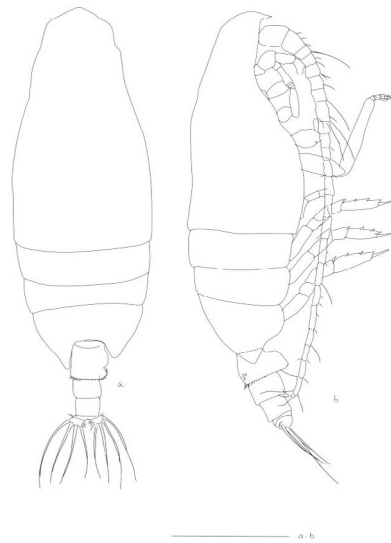


*Undeuchaeta intermedia* A. Scott, 1909

Scott, 1909, Plate 23, Figs.1-8. *Undeuchaeta intermedia* A. Scott, 1909, Female (from Indonesia–Malaysia): 1, habitus (dorsal); 2, forehead (lateral); 3/4, pediger 5 and genital double-somite (left/right); 5, rostrum; 6, antennule; 7/8, legs 1/2.

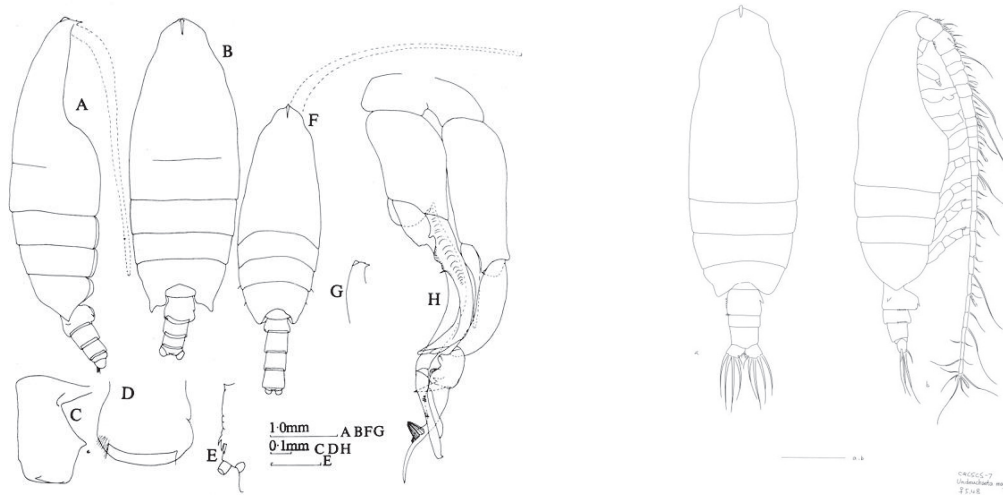
Sewell, 1929, As *Undeuchaeta bispinosa*. Fig.48. Male: a/b, legs 1/2; c, leg 5 (posterior).

Razouls C., Desreumaux N., Kouowenberg J. and de Bovée F., 2005–2021. Biodiversity of marine planktonic Copepods (morphology, geographical distribution and biological data). Sorbonne University, CNRS. Available at <http://copepodes.obs-banyuks.fr/en>. [Accessed April 07, 2021.]

*Undeuchaeta intermedia* A. Scott, 1909*Undeuchaeta intermedia* A. Scott, 1909

Original. *Undeuchaeta intermedia* A. Scott, 1909, female, 3.48 mm, a/b. halibut (dorsal/lateral).

*Undeuchaeta major* Giesbrecht, 1888 (Size: female: 4.15–6.50 mm; male: 3.90–5.50 mm)



Bradford & Jillett, 1980

*Undeuchaeta major* Giesbrecht, 1888

Original

Bradford & Jillett, 1980: 82, Fig.57. Female: A, habitus (lateral right side); B, idem (dorsal); C, genital segment (lateral right side); D, idem (dorsal); E, inner edge of basipod 1 of P4. Note: The teeth on basipod 1 of leg 4 are similar to those found in *U. incisa*. These teeth may not always be present as in one specimen there were two teeth on one side and one on the other and the border was wrinkled. Male: F, habitus (dorsal); G, forehead (lateral view); H, leg 5.

Razouls C., Desreumaux N., Kouowenbergh J. and de Bovée F., 2005–2021. Biodiversity of marine planktonic Copepods (morphology, geographical distribution and biological data). Sorbonne University, CNRS. Available at <http://copepodes.obs-banyuks.fr/en>. [Accessed May 07, 2021].

Original. *Undeuchaeta major* Giesbrecht, 1888. Female, 5.48 mm, South China Sea, habitus, dorsal/lateral.

*Undeuchaeta plumosa* (Lubbock, 1856) (size: female: 3.00–4.65 mm; male: 2.80–3.93 mm)

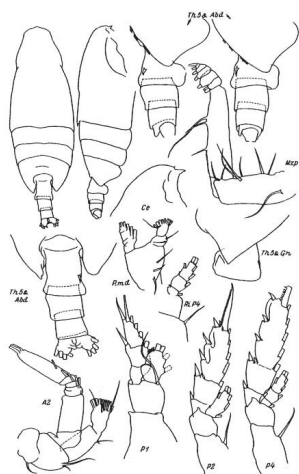


Fig. 248

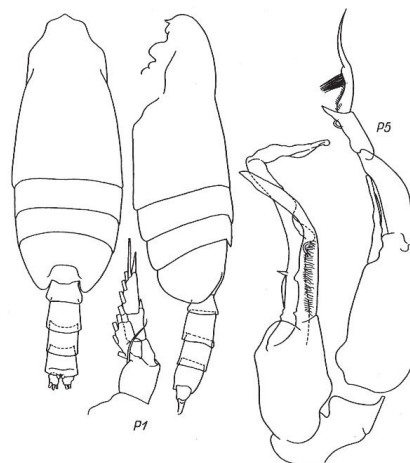


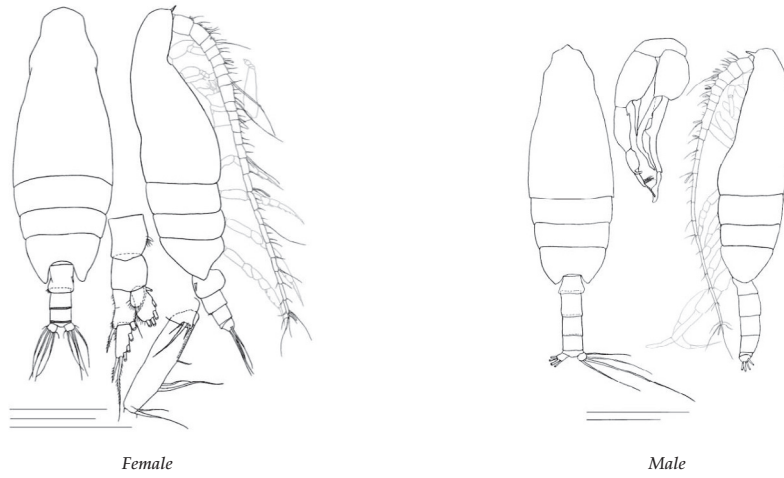
Fig. 249

*Undeuchaeta plumosa* (Lubbock, 1856)

Markhaseva, 1996: Fig. 248. *Undeuchaeta plumosa* (Lubbock, 1856), Female (from NE Atlantic). habitus (dorsal/lateral); Ce: forehead (lateral); A2, antenna; Th5 Abd, pediger 5 & urosome (lateral/dorsal); Th5 & Gn, pediger 5 & genital double-somite (lateral); A2, antenna; P.md: mandibular palp; Mxp, maxilliped; P1/2/4, legs 1/2/4; RiP4: leg 4 endopod. Fig.249. Male (from NE Atlantic). habitus (dorsal/lateral); P1, leg 1; P5, leg 5 (posterior).

Razouls C., Desreumaux N., Kouowenbergh J. and de Bovée F., 2005–2021. Biodiversity of marine planktonic Copepods (morphology, geographical distribution and biological data). Sorbonne University, CNRS. Available at <http://copepodes.obs-banyuks.fr/en>. [Accessed April 07, 2021].



*Undeuchaeta plumosa* (Lubbock, 1856)*Undeuchaeta plumosa* (Lubbock, 1856)

Original. *Undeuchaeta plumosa* (Lubbock, 1856), Female. 3.64 mm, East China Sea (25°24'N, 121°19'E), habitus (dorsal/lateral); maxilliped syncoxa; leg 1. Male, 3.18 mm, East of Taiwan (24°52'N, 122°17'E), habitus (dorsal/lateral); leg 5 (posterior).